

FOR SALE

338 N CALLOW AVE 338 N CALLOW AVE, BREMERTON, WA 98312

Property Summary



PROPERTY DESCRIPTION

Introducing 338 N Callow Ave, Bremerton, a prime investment opportunity for retail and street retail investors. This 2,550 SF building, steeped in history with its 1940 construction, offers a strategic location in the Bremerton area. Zoned DCC, it provides versatile potential for retail businesses looking to establish themselves in this vibrant community. With its timeless appeal and promising zoning, this property is poised to be the next hub for retail success. Don't miss the chance to make your mark in Bremerton with this outstanding investment opportunity.

PROPERTY HIGHLIGHTS

- 2,550 SF building
- Can be split into two suites
- Built in 1940
- Zoned District Center Core (DCC) providing many use options
- Located near PSNS & IMF

OFFERING SUMMARY

Sale Price:	\$295,000
Lot Size:	2,996 SF
Building Size:	2,550 SF

DEMOGRAPHICS	0.3 MILES	0.5 MILES	1 MILE
Total Households	608	1,674	5,593
Total Population	1,442	4,144	16,540
Average HH Income	\$98,882	\$94,982	\$95,749



CARLOS JARA

Commercial Broker
206.429.5380
carlos@jaracommercial.com

JARA COMMERCIAL

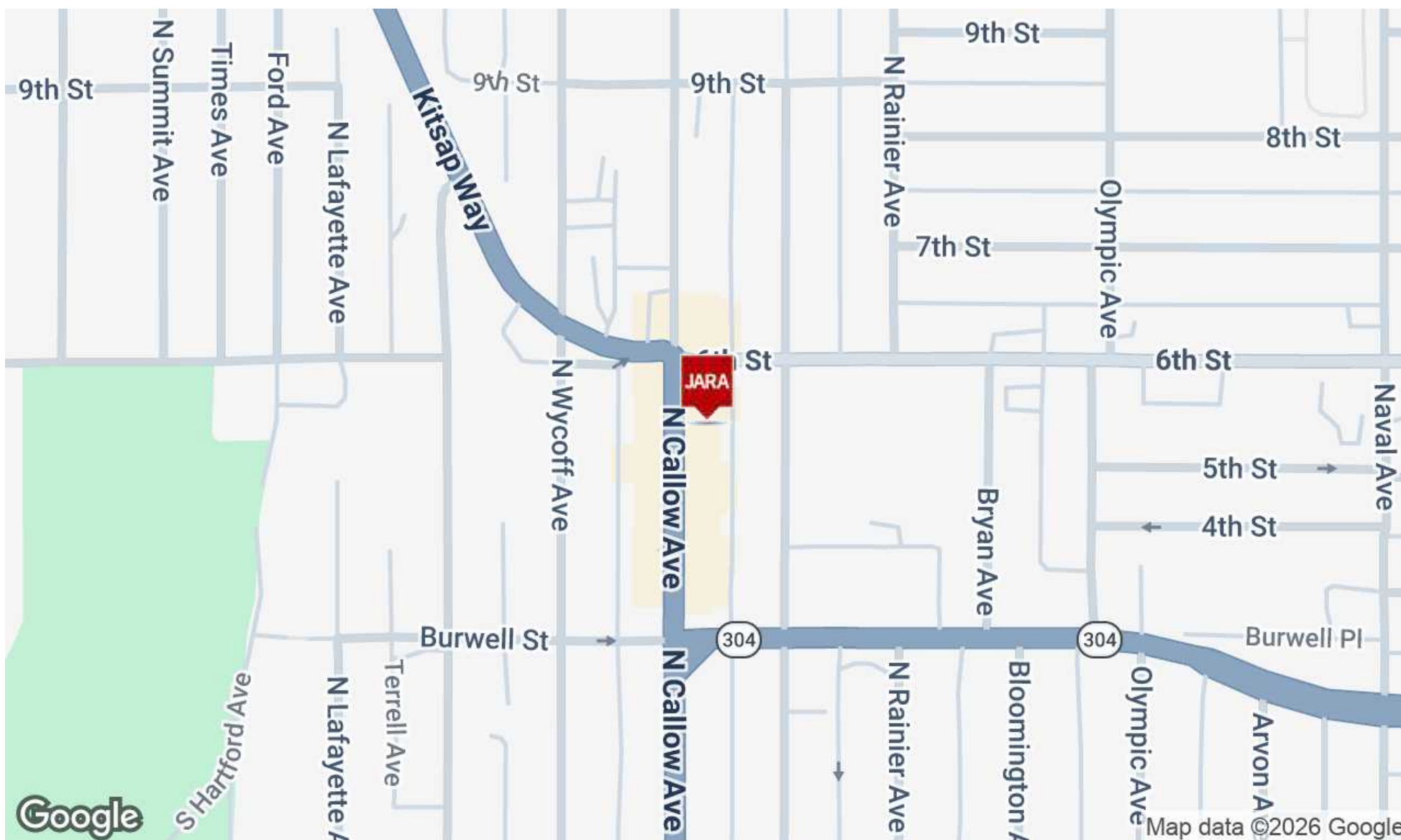
Kitsap County, Bremerton, WA 98312
206.429.5380 | jaracommercial.com



FOR SALE

338 N CALLOW AVE 338 N CALLOW AVE, BREMERTON, WA 98312

Location Map



CARLOS JARA

Commercial Broker

206.429.5380

carlos@jaracommercial.com

JARA COMMERCIAL

Kitsap County, Bremerton, WA 98312

206.429.5380 | jaracommercial.com



pellego

FOR SALE

338 N CALLOW AVE 338 N CALLOW AVE, BREMERTON, WA 98312

Additional Photos



CARLOS JARA

Commercial Broker

206.429.5380

carlos@jaracommercial.com

JARA COMMERCIAL

Kitsap County, Bremerton, WA 98312

206.429.5380 | jaracommercial.com

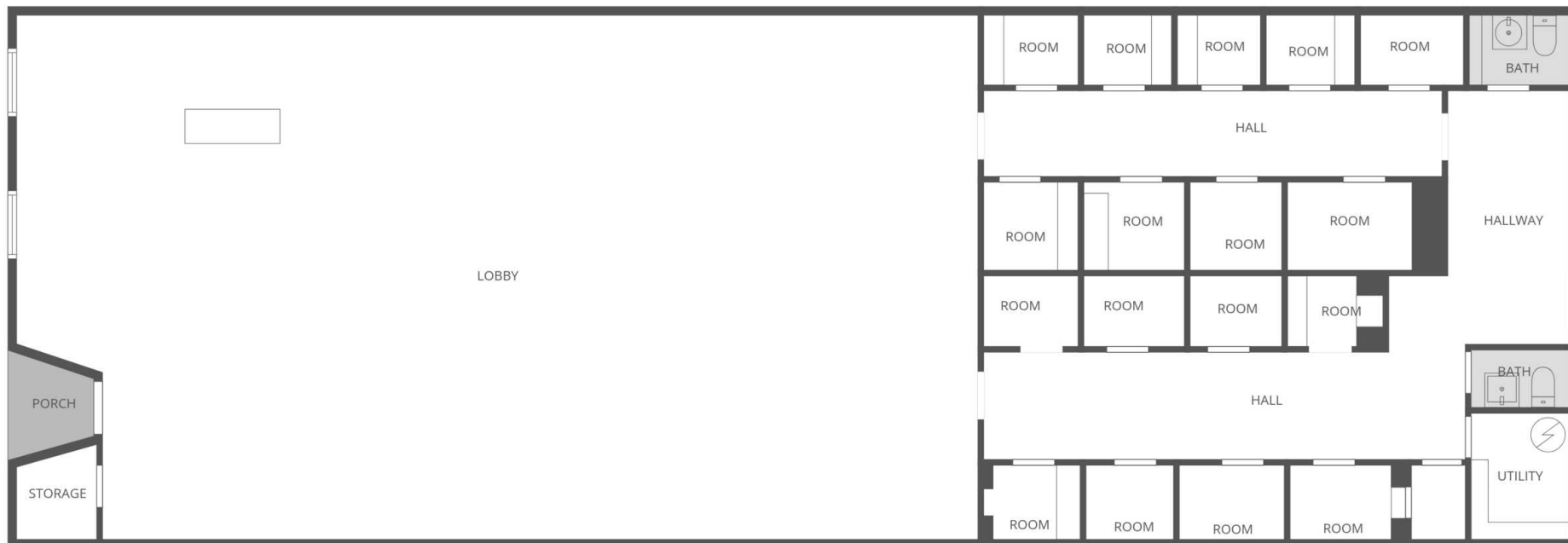


pellego

FOR SALE

338 N CALLOW AVE 338 N CALLOW AVE, BREMERTON, WA 98312

Floor Plan



CARLOS JARA

Commercial Broker

206.429.5380

carlos@jaracommercial.com

JARA COMMERCIAL

Kitsap County, Bremerton, WA 98312

206.429.5380 | jaracommercial.com



FOR SALE

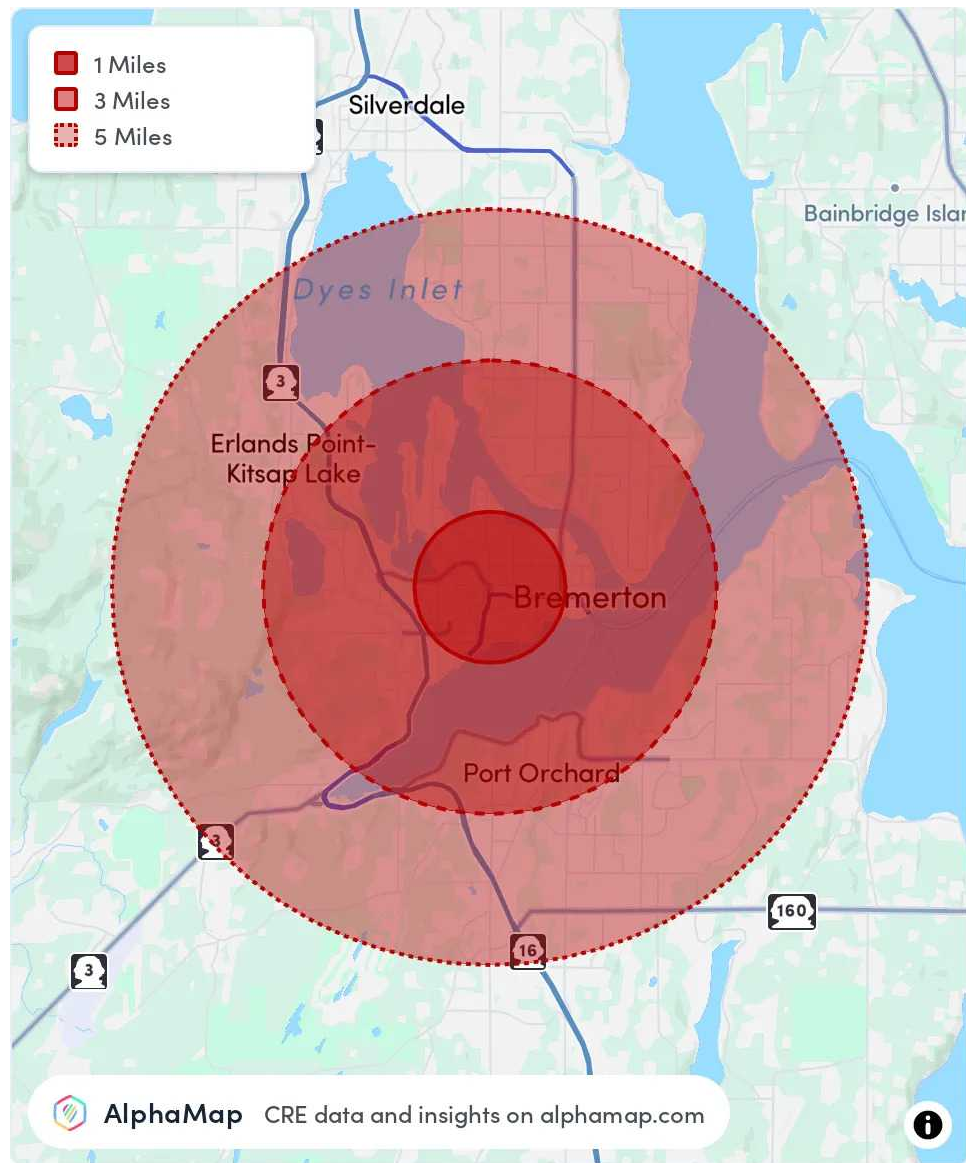
338 N CALLOW AVE 338 N CALLOW AVE, BREMERTON, WA 98312

Area Analytics

POPULATION	1 MILE	3 MILES	5 MILES
Total Population	16,540	63,523	124,351
Average Age	36	39	39
Average Age (Male)	35	38	38
Average Age (Female)	36	40	40

HOUSEHOLD & INCOME	1 MILE	3 MILES	5 MILES
Total Households	5,593	24,344	46,995
Persons per HH	3	2.6	2.6
Average HH Income	\$95,749	\$95,925	\$104,891
Average House Value	\$418,924	\$468,830	\$505,816
Per Capita Income	\$31,916	\$36,894	\$40,342

Map and demographics data derived from AlphaMap



CARLOS JARA

Commercial Broker

206.429.5380

carlos@jaracommercial.com

JARA COMMERCIAL

Kitsap County, Bremerton, WA 98312

206.429.5380 | jaracommercial.com

