

Tehaleh Industrial Park

Bonney Lake | Washington 98391

PROPERTY HIGHLIGHTS

- + Located in Tehaleh, a 4,700 acre planned community and the 120 Acre Tehaleh Industrial Park
- + SEPA entitled, ready to build
- + Pad ready finished site
- + Ideal for yard use, manufacturing or assembly
- + Falling Waters Boulevard & Rhodes Lake Road extension to SR 162/128th to be completed by December 2026 providing excellent site access
- + Price includes:
 - Grading to 1% to 2% slope
 - Street frontage improvements and landscaping
 - Utility stubs to site
 - Offsite master storm retention
 - Sale calculation on "Net Usable" land (less than 3% slope)
- + Sand and Gravel base
- + Newly developed property with CC&Rs and Commercial Owners Association for value protection

TOTAL AC

**14.68 Acres,
Gross**

USABLE AC

**12.00 Acres,
Usable**

SALE PRICE

\$20.00/USF

DAVE DOUGLAS, SIOR, CCIM

Partner
+1 253 203 1326
ddouglas@nai-psp.com

KYLE SCHIPPER, SIOR

Partner
+1 253 203 1320
kschipper@nai-psp.com

KENT CHANNING

Partner
+1 425 586 5628
kchanning@nai-psp.com

ARIE SALOMON, SIOR, CCIM

Principal
+1 425 586 5636
asalomon@nai-psp.com



THE INFORMATION CONTAINED HEREIN HAS BEEN GIVEN TO US BY THE OWNER OF THE PROPERTY OR OTHER SOURCES WE DEEM RELIABLE. WE HAVE NO REASON TO DOUBT ITS ACCURACY, BUT WE DO NOT GUARANTEE IT. ALL INFORMATION SHOULD BE VERIFIED PRIOR TO PURCHASE OR LEASE.



**SOLD - ALTEC
LOT 5
5.83 AC**

**PENDING-LOT 3
20.20 AC GROSS
16.60 AC USABLE**

**AVAILABLE
LOT 4
9.00 AC GROSS
8.20 AC USABLE**

**AVAILABLE
LOT 6
14.68 AC GROSS
12.00 AC USABLE**

**AVAILABLE
LOT 7
71.13 AC GROSS
59.50 AC USABLE**



**AVAILABLE
LOT 6
14.68 AC GROSS
12.00 AC USABLE**

**SOLD - ALTEC
LOT 5
5.83 AC**

**AVAILABLE
LOT 4
9.00 AC GROSS
8.20 AC USABLE**

**PENDING
LOT 3
20.20 AC GROSS
16.60 AC USABLE**

**AVAILABLE
LOT 7
71.13 AC GROSS
59.50 AC USABLE**

DAVE DOUGLAS, SIOR, CCIM
Partner
+1 253 203 1326
ddouglas@nai-psp.com

KYLE SCHIPPER, SIOR
Partner
+1 253 203 1320
kschipper@nai-psp.com

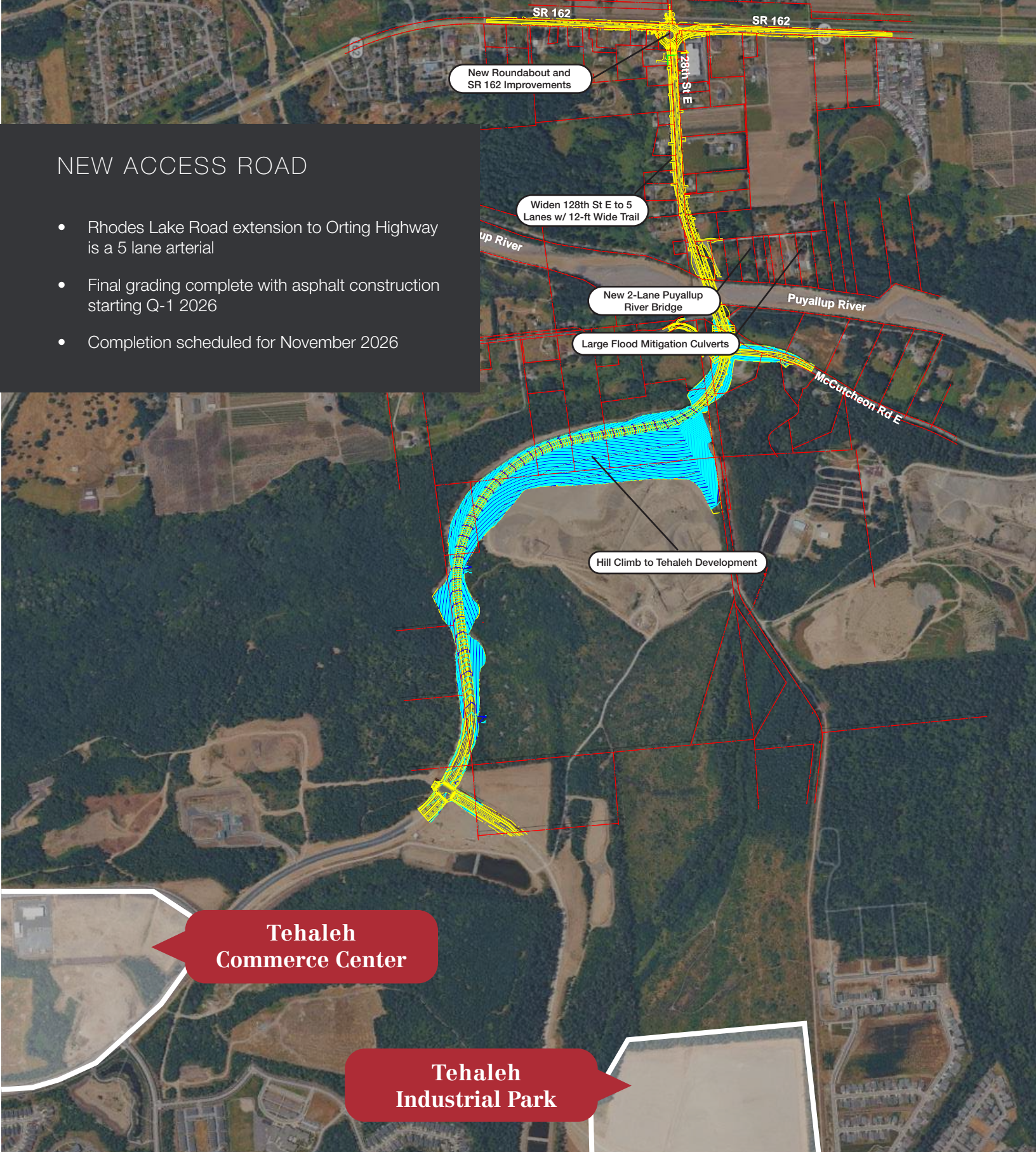
KENT CHANNING
Partner
+1 425 586 5628
kchanning@nai-psp.com

ARIE SALOMON, SIOR, CCIM
Principal
+1 425 586 5636
asalomon@nai-psp.com



NEW ACCESS ROAD

- Rhodes Lake Road extension to Orting Highway is a 5 lane arterial
- Final grading complete with asphalt construction starting Q-1 2026
- Completion scheduled for November 2026



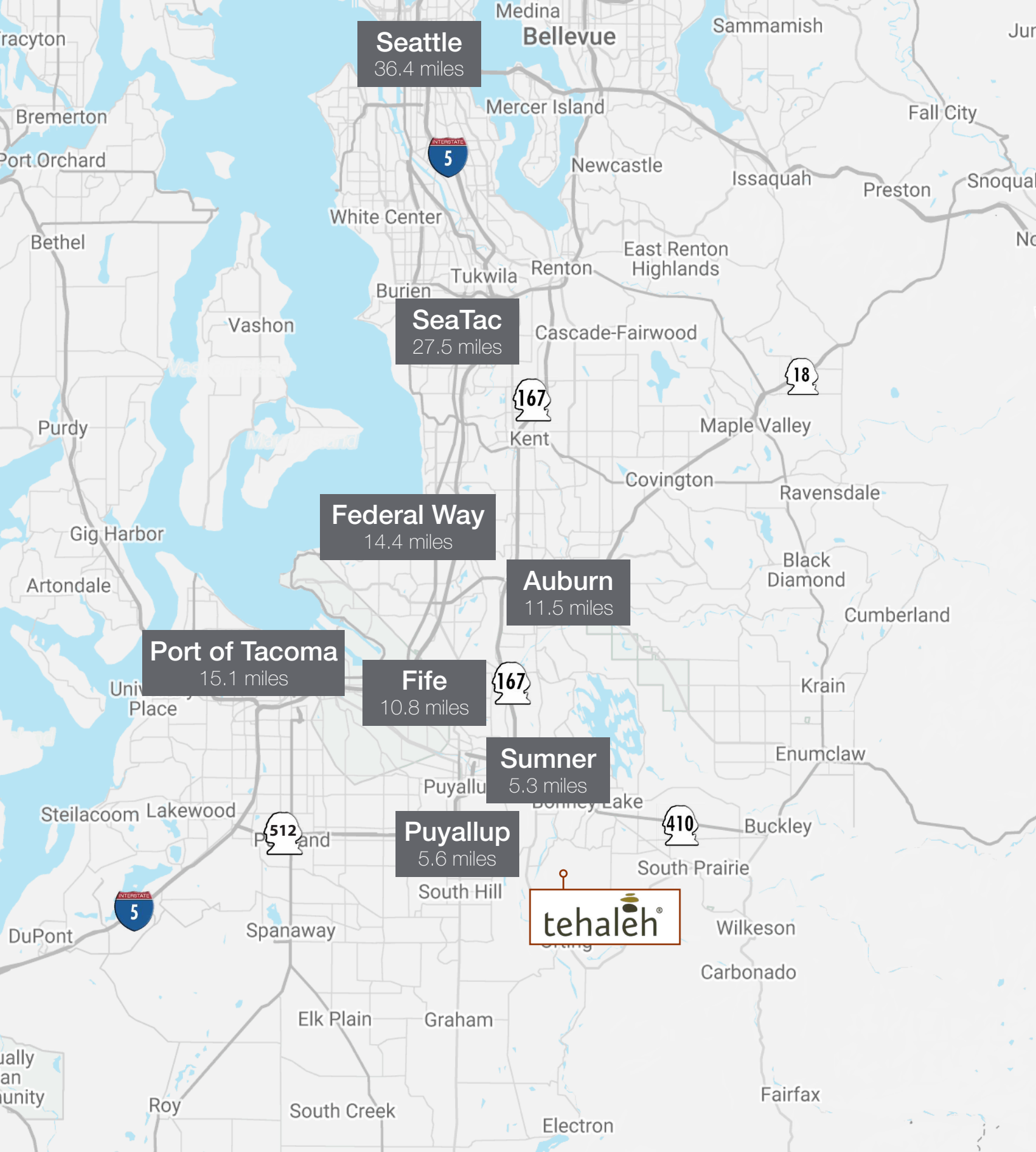
DAVE DOUGLAS, SIOR, CCIM
Partner
+1 253 203 1326
ddouglas@nai-pp.com

KYLE SCHIPPER, SIOR
Partner
+1 253 203 1320
kschipper@nai-pp.com

KENT CHANNING
Partner
+1 425 586 5628
kchanning@nai-pp.com

ARIE SALOMON, SIOR, CCIM
Principal
+1 425 586 5636
asalomon@nai-pp.com





DAVE DOUGLAS, SIOR, CCIM
 Partner
 +1 253 203 1326
 ddouglas@nai-psp.com

KYLE SCHIPPER, SIOR
 Partner
 +1 253 203 1320
 kschipper@nai-psp.com

KENT CHANNING
 Partner
 +1 425 586 5628
 kchanning@nai-psp.com

ARIE SALOMON, SIOR, CCIM
 Principal
 +1 425 586 5636
 asalomon@nai-psp.com

