

For Sale & Lease
Retail/Office

NAIBlack



164 S Browne St

Spokane, Washington 99201

Property Highlights

- Building SF: 880 ±
- Lot SF: 2,625 ±
- Residential or Retail Zoning
- Historic Architecture
- One Bathroom
- One Kitchenette
- Built-In Desk
- Traffic Count: 22,900 ± Vehicles per Day

Property Description

This charming 880-square-foot historic property offers a unique blend of commercial and residential possibilities, featuring a beautifully preserved space with a built-in desk, kitchenette, and private bathroom. Situated on a 2,625-square-foot lot, the property boasts timeless character, ideal for a boutique retail shop, office, or cozy live-work setup. With flexible zoning, this rare opportunity allows for endless potential in a prime location.

Sale Price: \$275,000

Lease Rate: \$1,500.00 per month (NNN)



For more information

Eric Weaver

O: 360 631 1526

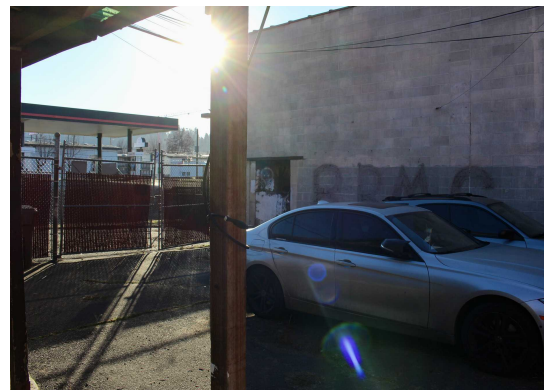
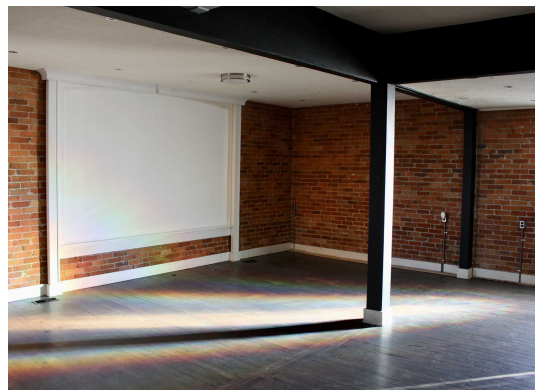
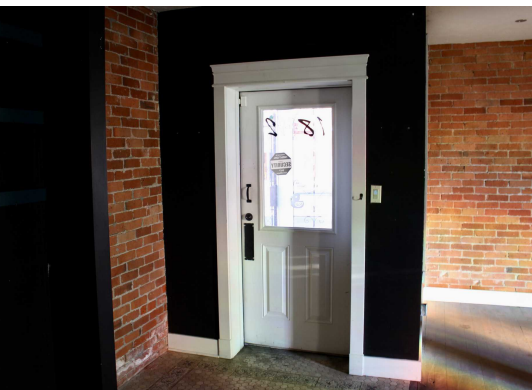
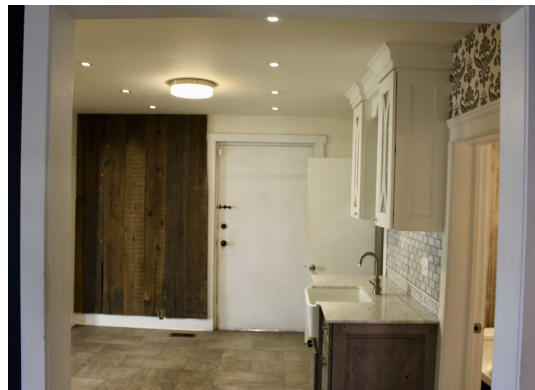
eric.weaver@naiblack.com

No warranty or representation, expression or implied, is made as to the accuracy of the information contained herein, and the same is submitted subject to errors, omissions, change or price, rental or other conditions, prior to sale, lease, financing, or withdrawal without notice, and of special listing conditions imposed by our principals no warranties or representations are made as to the condition of the property or any hazards contained therein or any to be implied.

801 W. Riverside Avenue, Suite 300
Spokane, WA 99201
509 623 1000 tel
naiblack.com

For Sale & Lease
Retail/Office

NAI Black

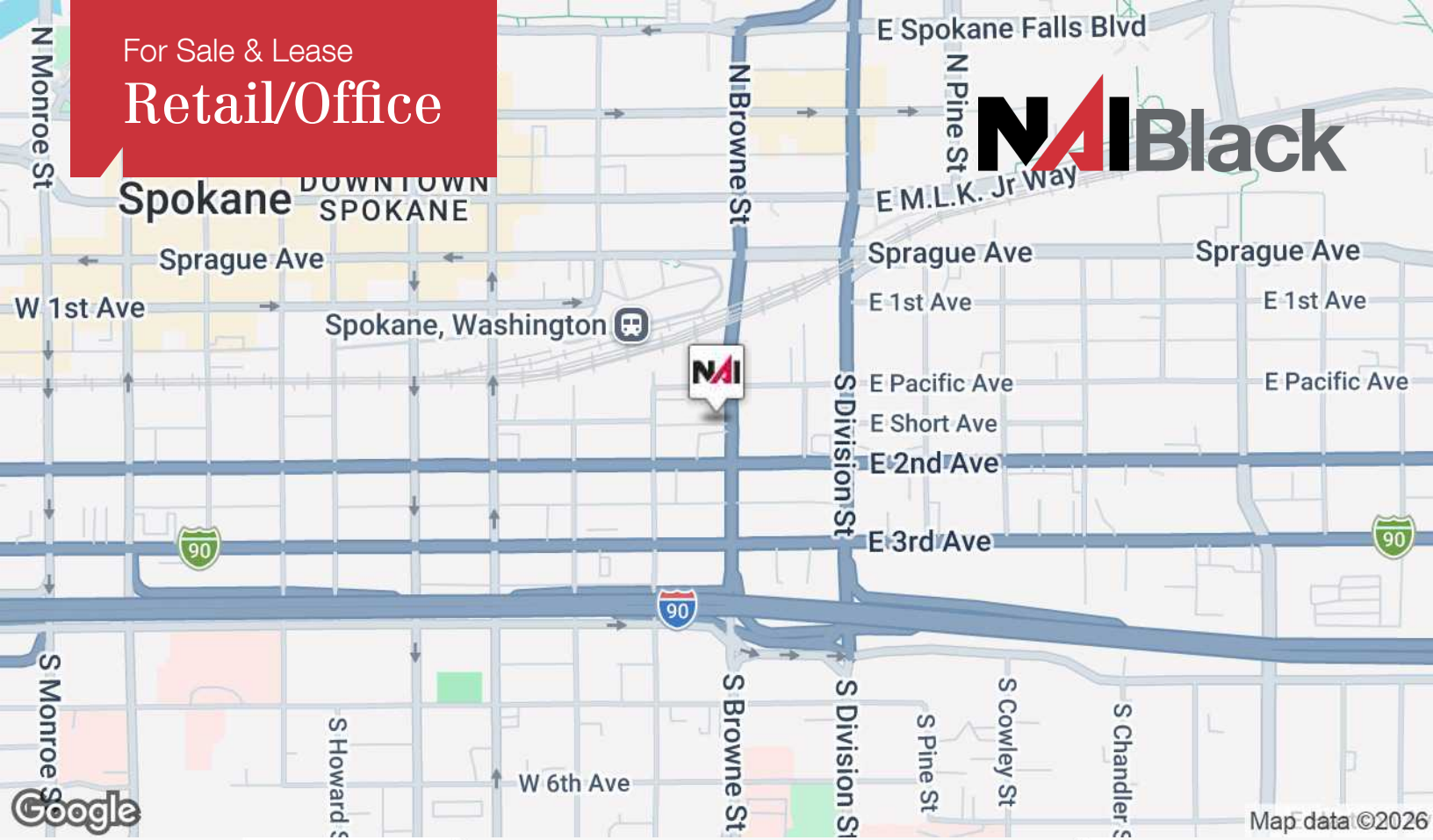


No warranty or representation, expression or implied, is made as to the accuracy of the information contained herein, and the same is submitted subject to errors, omissions, change or price, rental or other conditions, prior to sale, lease, financing, or withdrawal without notice, and of special listing conditions imposed by our principals no warranties or representations are made as to the condition of the property or any hazards contained therein or any to be implied.

801 W. Riverside Avenue, Suite 300
Spokane, WA 99201
509 623 1000 tel
naiblack.com

For Sale & Lease
Retail/Office

NAI Black



No warranty or representation, expression or implied, is made as to the accuracy of the information contained herein, and the same is submitted subject to errors, omissions, change or price, rental or other conditions, prior to sale, lease, financing, or withdrawal without notice, and of special listing conditions imposed by our principals no warranties or representations are made as to the condition of the property or any hazards contained therein or any to be implied.

801 W. Riverside Avenue, Suite 300
Spokane, WA 99201
509 623 1000 tel
naiblack.com



Population	1 Mile	3 Miles	5 Miles
Total Population	14,410	119,769	234,703
Average Age	42	40	40
Average Age (Male)	42	39	39
Average Age (Female)	42	40	41

Households & Income	1 Mile	3 Miles	5 Miles
Total Households	7,484	50,604	97,565
# of Persons per HH	1.54	2.21	2.32
Average HH Income	\$63,986	\$87,310	\$92,797
Average House Value	\$483,854	\$430,845	\$421,004

Demographics data derived from Esri forecast for 2025

