

# FOR SALE

10.22 Acre Development Site  
Meridian Campus  
Lacey, Washington



## 8780 & 8945 Commerce Pl Dr NE

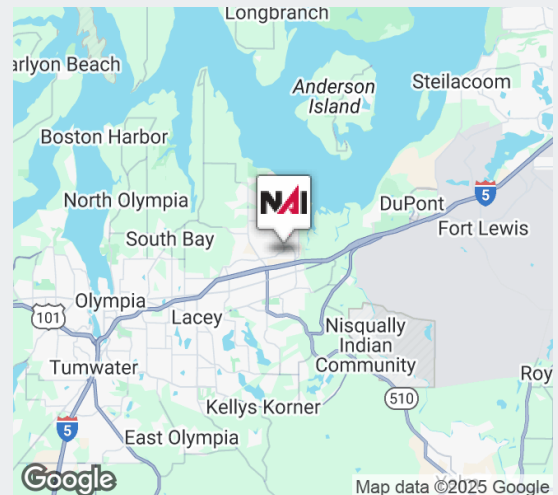
Lacey, WA

### PROPERTY HIGHLIGHTS

- + Fantastic owner-user opportunity
- + Site: 10.22 Acres
  - Parcel 1: 5.11 Acres
  - Parcel 2: 5.11 Acres
- + Excellent sand & gravel soils - allow for year round construction
- + Light Industrial Zoning - allows outside storage
- + Meridian Campus CC&Rs provide development standards designed to protect and enhance property values
- + Multiple building configurations provide flexibility for Built to Suit projects
- + All utilities to site
- + Storm water retention off-site in Meridian Campus community facility
- + Easy access to I-5 exits 111 and 114

### PRICE/SF

<b>LOT 1 &amp; 2</b>	\$13.75
<b>LOT 1</b>	\$14.25
<b>LOT 2</b>	\$14.45



**KYLE SCHIPPER, SIOR**  
Partner  
+1 253 203 1320  
kschipper@nai-psp.com

**DAVE DOUGLAS, SIOR, CCIM**  
Partner  
+1 253 203 1326  
ddouglas@nai-psp.com

**TONY RONA**  
Vice President  
+1 425 586 5634  
trona@nai-psp.com



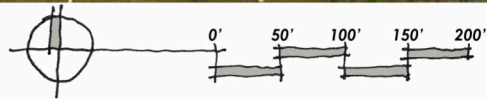
THE INFORMATION CONTAINED HEREIN HAS BEEN GIVEN TO US BY THE OWNER OF THE PROPERTY OR OTHER SOURCES WE DEEM RELIABLE, WE HAVE NO REASON TO DOUBT ITS ACCURACY, BUT WE DO NOT GUARANTEE IT. ALL INFORMATION SHOULD BE VERIFIED PRIOR TO PURCHASE OR LEASE.

nai-psp.com

# Speculative Site Design



New common property line along western edge of 15' landscape easement

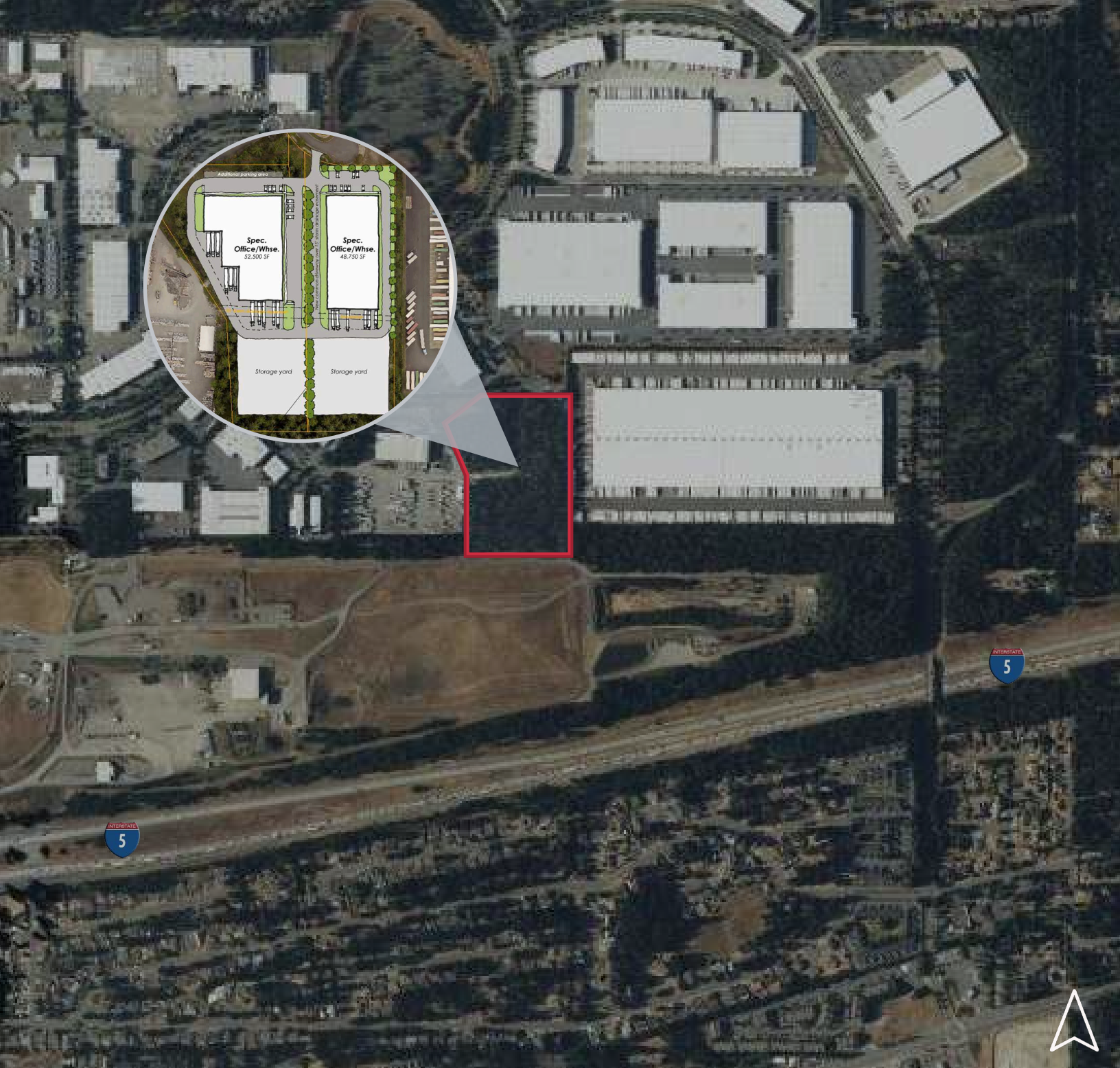


**KYLE SCHIPPER, SIOR**  
Partner  
+1 253 203 1320  
kschipper@nai-psp.com

**DAVE DOUGLAS, SIOR, CCIM**  
Partner  
+1 253 203 1326  
ddouglas@nai-psp.com

**TONY RONA**  
Vice President  
+1 425 586 5634  
trona@nai-psp.com





## MERIDIAN CAMPUS - LACEY, WASHINGTON OVERVIEW

Meridian Campus in Lacey, WA is home to some of the largest companies with the Puget Sound Region. Located within 30 Minutes of Tacoma and less than 2 hours from Portland, Meridian Campus is strategically positioned to serve both the Puget Sound and Portland markets from a single location. It offers a diverse location that has immediate access to Interstate 5 via Exit 111 or Exit 114.

**KYLE SCHIPPER, SIOR**  
Partner  
+1 253 203 1320  
kschipper@nai-psp.com

**DAVE DOUGLAS, SIOR, CCIM**  
Partner  
+1 253 203 1326  
ddouglas@nai-psp.com

**TONY RONA**  
Vice President  
+1 425 586 5634  
trona@nai-psp.com

