

SIGNIFICANT PRICE REDUCTION!

Prime Seattle Transit-Oriented Investment/Development Site

The Rowland Studio Building | 1207 & 1211 NE 65th St, Seattle, WA

Available for the first time since the early 1960's, this two-parcel project consists of an ideal mix of four retail units comprising a total rentable area of approximately 7,305 SF.

PROPERTY HIGHLIGHTS

- + Zoning permits seven story mixed-use development with apartments over ground floor retail
- + Steps from the Link Light Rail, major bus routes, and near I-5, SR 99, SR 520, and SR 522
- + Neighborhood has experienced rapid development and is known for its mix of urban convenience and a strong sense of community
- + 100% occupied with stable tenant history

DEAN ALTARAS
Partner
+1 425 586 5613
daltaras@nai-psp.com

BILLY POLL, CCIM
Partner
+1 425 586 5604
bpoll@nai-psp.com

NAI Puget Sound
Properties

THE INFORMATION CONTAINED HEREIN HAS BEEN GIVEN TO US BY THE OWNER OF THE PROPERTY OR OTHER SOURCES WE DEEM RELIABLE, WE HAVE NO REASON TO DOUBT ITS ACCURACY, BUT WE DO NOT GUARANTEE IT. ALL INFORMATION SHOULD BE VERIFIED PRIOR TO PURCHASE OR LEASE.

SALE PRICE

\$3,500,000

BUILDING SF

7,305 SF

LOT SF

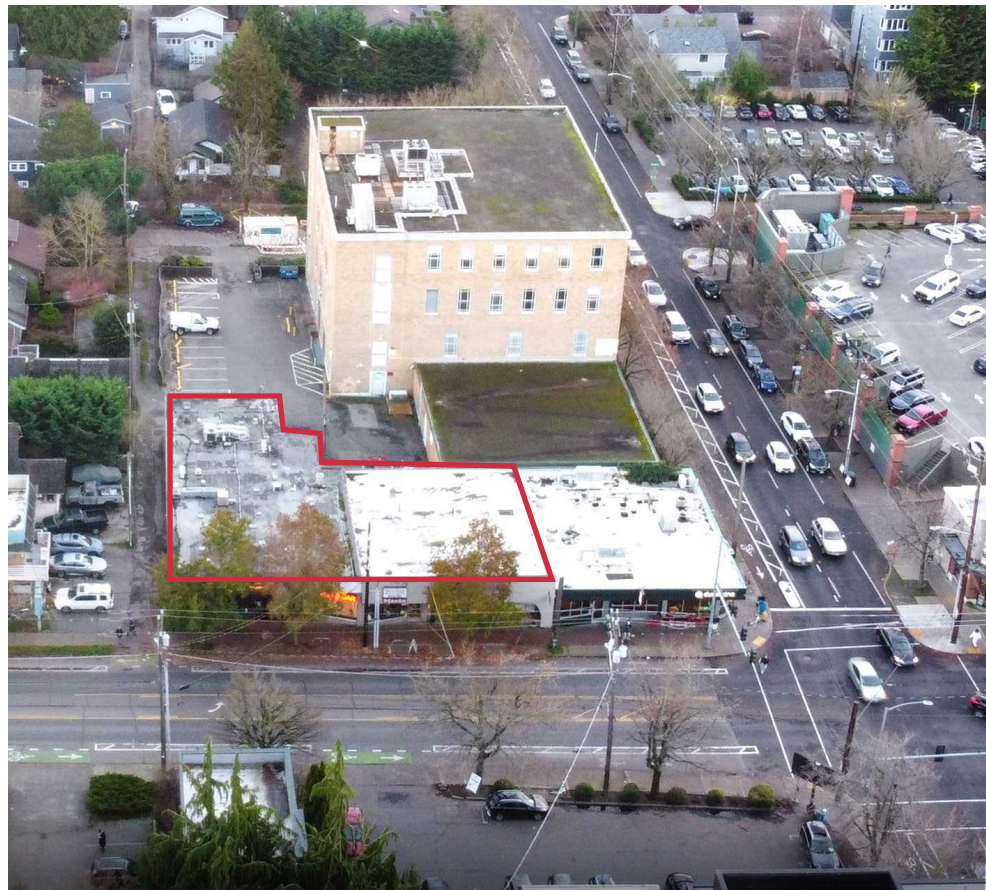
8,319 SF

TOTAL TENANTS

4

nai-psp.com

Prime Seattle Transit-Oriented Development Site



DEAN ALTARAS
Partner
+1 425 586 5613
daltaras@nai-psp.com

BILLY POLL, GCIM
Partner
+1 425 586 5604
bpoll@nai-psp.com

