

10714 1ST AVE S



FOR SALE

*A 2,592 Square Feet Standalone Industrial Shop Space
for Sale in Seattle's King County*

10714 1ST AVE S | SEATTLE, WA

6,600

SF LAND AREA

10'

CLEAR HEIGHT

Property Highlights

2,592 SF shop space

330 SF office

6,600 SF land area

10' clear height

2 drive in doors - 10'x10'

Standalone building

Break area with kitchen

Strut rail hung from ceiling

Finished concrete floor

Zoned CB - King County

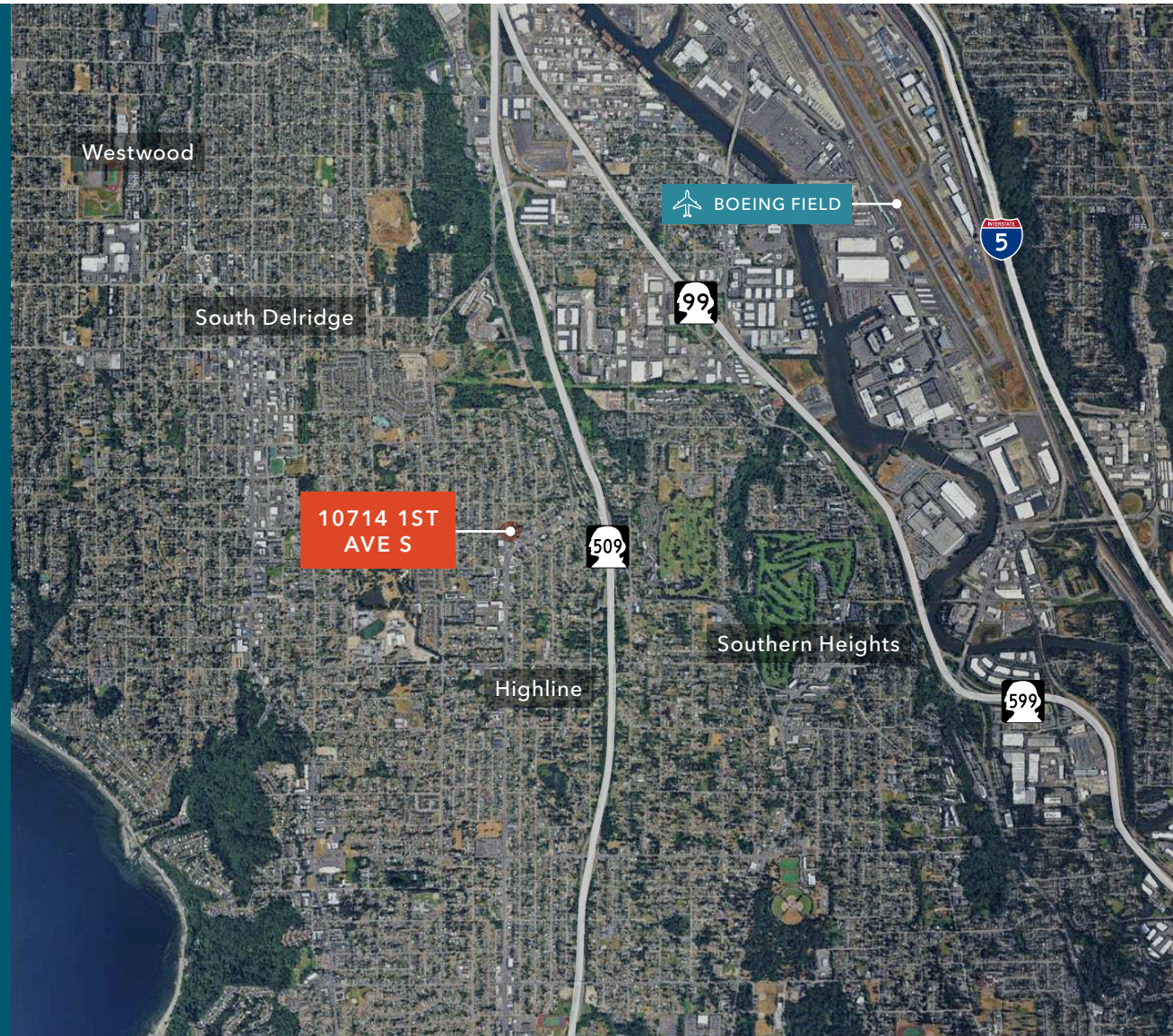
600 amps, 240V, 3-Phase

Feed Rail for 120V/240V power drops

LED shop lights

Forklift and racking available

\$1,150,000 sale price



[KIDDER.COM](https://www.kidder.com)

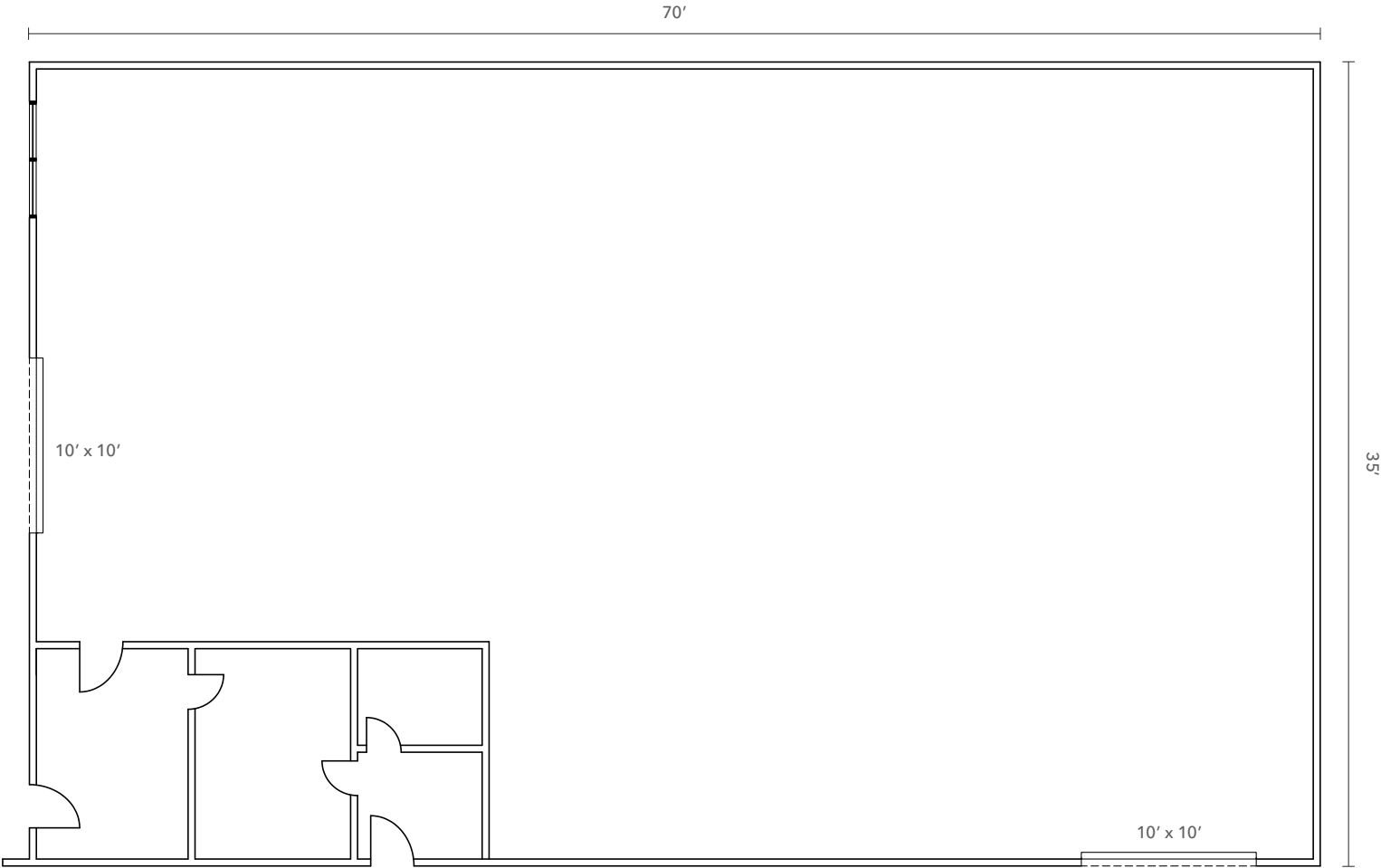
This information supplied herein is from sources we deem reliable. It is provided without any representation, warranty, or guarantee, expressed or implied as to its accuracy. Prospective Buyer or Tenant should conduct an independent investigation and verification of all matters deemed to be material, including, but not limited to, statements of income and expenses. Consult your attorney, accountant, or other professional advisor. All Kidder Mathews designs are the sole property of Kidder Mathews. Branded materials and layouts are not authorized for use by any other firm or person.



MAIN FLOOR PLAN

2,592 SF

TOTAL AREA



KIDDER.COM

This information supplied herein is from sources we deem reliable. It is provided without any representation, warranty, or guarantee, expressed or implied as to its accuracy. Prospective Buyer or Tenant should conduct an independent investigation and verification of all matters deemed to be material, including, but not limited to, statements of income and expenses. Consult your attorney, accountant, or other professional advisor. All Kidder Mathews designs are the sole property of Kidder Mathews. Branded materials and layouts are not authorized for use by any other firm or person.



10714 1ST
AVE S



Exclusively listed by

JIM KIDDER

206.248.7328

jim.kidder@kidder.com

KIDDER.COM

This information supplied herein is from sources we deem reliable. It is provided without any representation, warranty, or guarantee, expressed or implied as to its accuracy. Prospective Buyer or Tenant should conduct an independent investigation and verification of all matters deemed to be material, including, but not limited to, statements of income and expenses. Consult your attorney, accountant, or other professional advisor. All Kidder Mathews designs are the sole property of Kidder Mathews. Branded materials and layouts are not authorized for use by any other firm or person.

