



Bryant Office Condominiums for Sale
3408 NE 65th St Units A & B
Seattle, WA 98115

Property Details

Two Commercial Condo Units Offered Separately or Combined

Property Address: 3408 NE 65th St Unit A
Parcel Number: 117295-0010
2026 Property Taxes: \$4,401.91
HOA Dues: \$257.08 per month
HOA Dues Include: Water, sewer & building insurance
Unit Size: 879 SF
Price For Sale: \$397,500

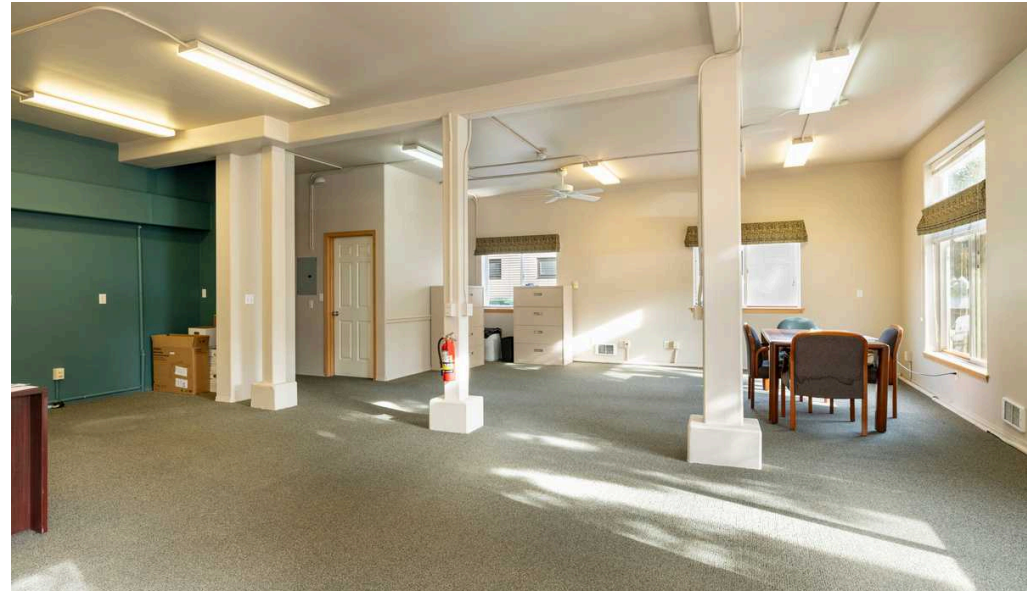
Property Address: 3408 NE 65th St Unit B
Parcel Number: 117295-0020
2026 Property Taxes: \$4,401.91
HOA Dues: \$257.08 per month
HOA Dues Include: Water, sewer & building insurance
Unit Size: 879 SF
Price For Sale: \$397,500



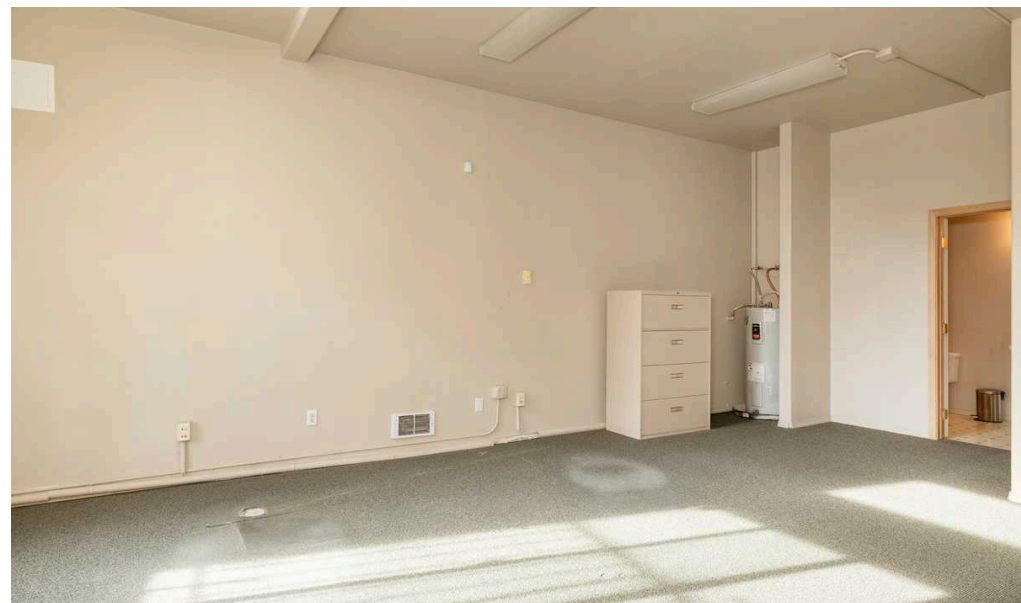
Property Highlights

- 2 Commercial Condominium Units for Sale
- Currently combined as one unit but can be sold separately
- Prime Bryant location
- Great street visibility
- Rare opportunity to acquire commercial property in Bryant

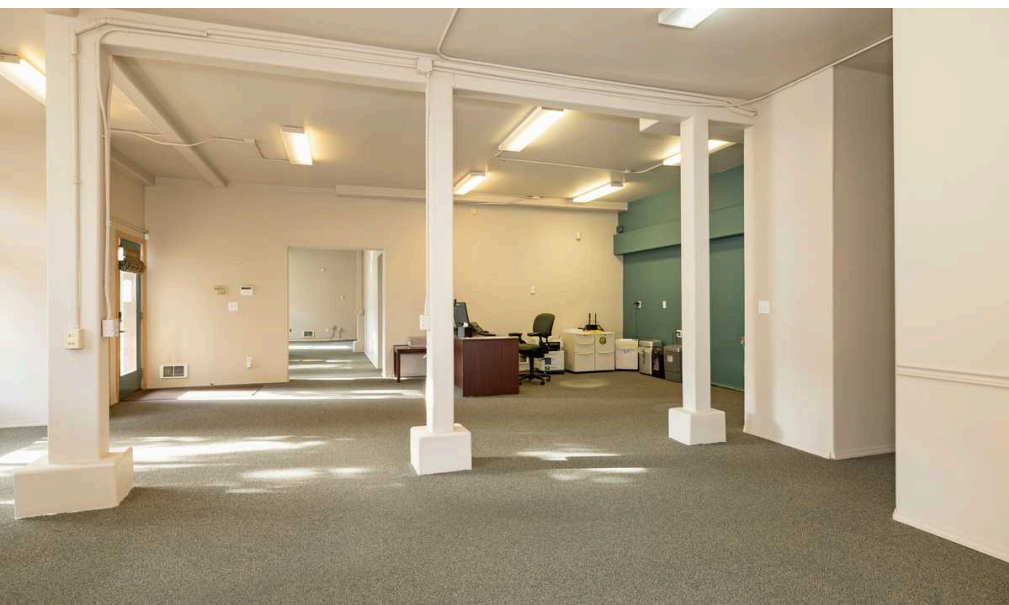
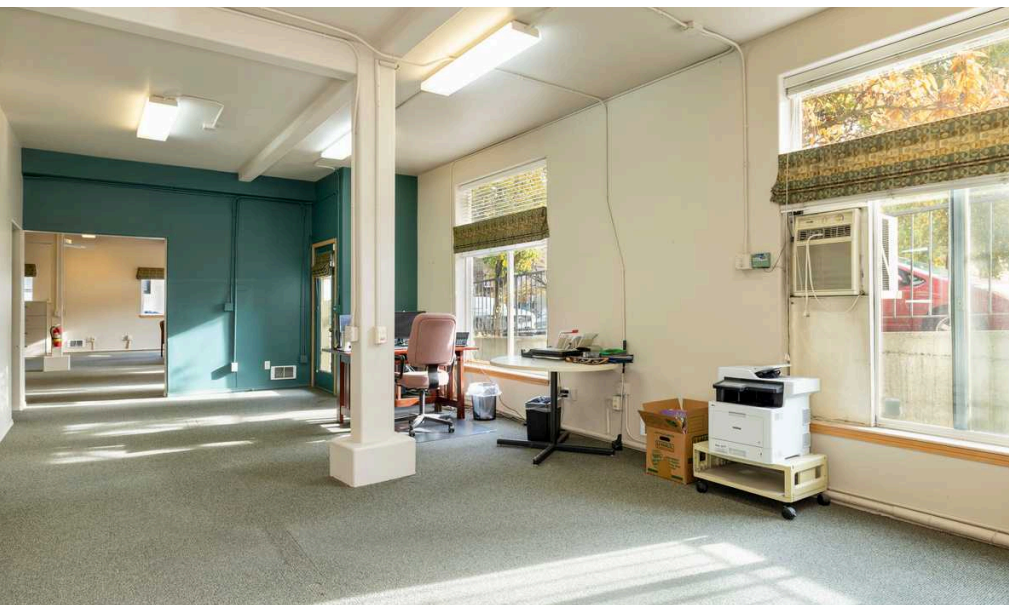
Bryant View Commercial Condos Units A & B



Bryant View Commercial Condos Units A & B



Bryant View Commercial Condos Units A & B





Exclusively Listed by:

Lauren M Hendricks

Windermere Real Estate Midtown Commercial

215 Westlake Ave N

Seattle, WA 98109

(206) 999-9161

LaurenHendricks@Windermere.com

www.CommercialSeattle.com