

OFFICE FOR SALE

149TH & MERIDIAN OFFICE BUILDING

10202 149TH STREET EAST, PUYALLUP, WA 98374



FOR SALE

KELLER WILLIAMS COMMERCIAL
1029 E Main, Suite 201
Puyallup, WA 98372



PRESENTED BY:

RICK BROWN
Commercial Broker
office: (253) 840-5574
cell: (253) 617-9460
rickbrown@kw.com
Lic: 27026, WA

We obtained the information above from sources we believe to be reliable. However, we have not verified its accuracy and make no guarantee, warranty or representation about it. It is submitted subject to the possibility of errors, omissions, change of price, rental or other conditions, prior sale, lease or financing, or withdrawal without notice. We include projections, opinions, assumptions or estimates for example only, and they may not represent current or future performance of the property. You and your tax and legal advisors should conduct your own investigation of the property and transaction.

Disclaimer



All materials and information received or derived from KW Commercial its directors, officers, agents, advisors, affiliates and/or any third party sources are provided without representation or warranty as to completeness, veracity, or accuracy, condition of the property, compliance or lack of compliance with applicable governmental requirements, developability or suitability, financial performance of the property, projected financial performance of the property for any party's intended use or any and all other matters.

Neither KW Commercial its directors, officers, agents, advisors, or affiliates makes any representation or warranty, express or implied, as to accuracy or completeness of the materials or information provided, derived, or received. Materials and information from any source, whether written or verbal, that may be furnished for review are not a substitute for a party's active conduct of its own due diligence to determine these and other matters of significance to such party. KW Commercial will not investigate or verify any such matters or conduct due diligence for a party unless otherwise agreed in writing.

EACH PARTY SHALL CONDUCT ITS OWN INDEPENDENT INVESTIGATION AND DUE DILIGENCE.

Any party contemplating or under contract or in escrow for a transaction is urged to verify all information and to conduct their own inspections and investigations including through appropriate third-party independent professionals selected by such party. All financial data should be verified by the party including by obtaining and reading applicable documents and reports and consulting appropriate independent professionals. KW Commercial makes no warranties and/or representations regarding the veracity, completeness, or relevance of any financial data or assumptions. KW Commercial does not serve as a financial advisor to any party regarding any proposed transaction.

All data and assumptions regarding financial performance, including that used for financial modeling purposes, may differ from actual data or performance. Any estimates of market rents and/or projected rents that may be provided to a party do not necessarily mean that rents can be established at or increased to that level. Parties must evaluate any applicable contractual and governmental limitations as well as market conditions, vacancy factors and other issues in order to determine rents from or for the property. Legal questions should be discussed by the party with an attorney. Tax questions should be discussed by the party with a certified public accountant or tax attorney. Title questions should be discussed by the party with a title officer or attorney. Questions regarding the condition of the property and whether the property complies with applicable governmental requirements should be discussed by the party with appropriate engineers, architects, contractors, other consultants, and governmental agencies. All properties and services are marketed by KW Commercial in compliance with all applicable fair housing and equal opportunity laws.

Exclusively Listed by

Rick Brown - Commercial Broker

☎ (253) 840-5574

✉ rickbrown@kw.com

📄 Lic: 27026, WA

The calculations and data presented are deemed to be accurate, but not guaranteed. They are intended for the purpose of illustrative projections and analysis. The information provided is not intended to replace or serve as substitute for any legal, accounting, investment, real estate, tax or other professional advice, consultation or service. The user of this software should consult with a professional in the respective legal, accounting, tax or other professional area before

Property Overview



SUMMARY

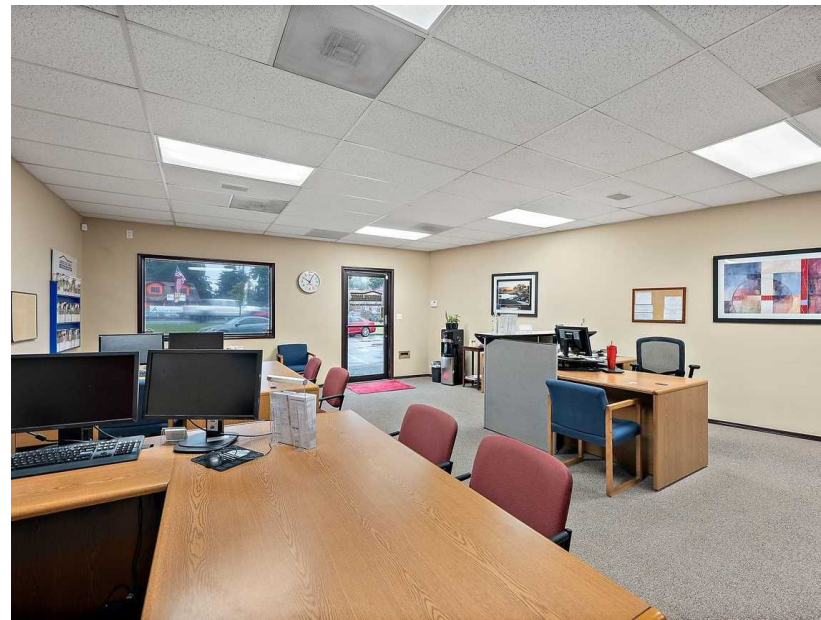
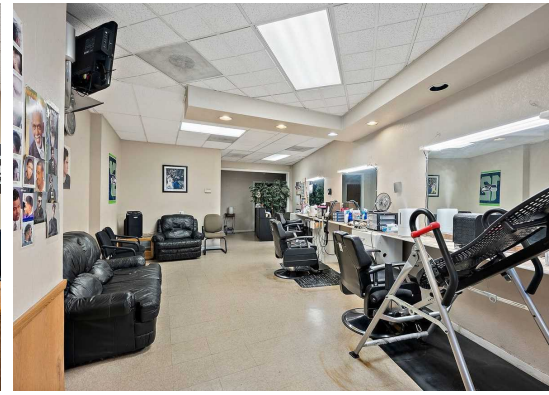
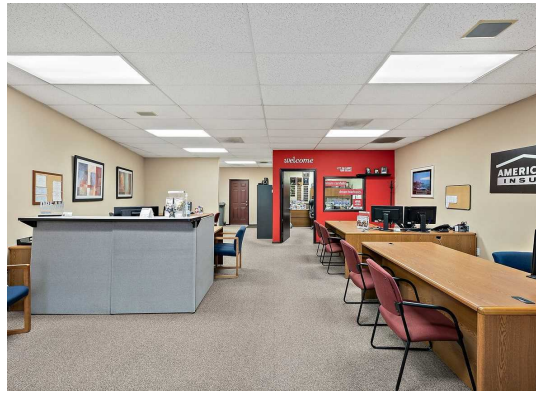
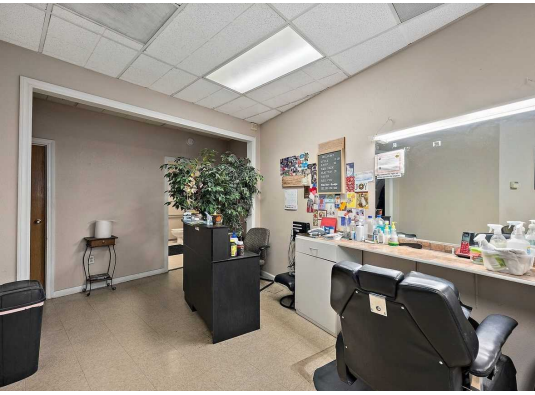
Price:	\$1,950,000
CAP Rate:	5.0%
Building SF:	5,200
Lot Size:	0.69 Acres
Occupancy:	Multi-Tenant
Units:	4
Parking:	Surface
Parking Spaces:	26 dedicated
Parking Ratio:	5
Year Built:	1994
Zoning:	UCor - Urban Corridor

PROPERTY OVERVIEW

Stable, income generating, investment property available in South Hill! This 5,200 SF multi-tenant building is home to 4 long-term tenants, positioned on a 0.69 acre lot with 26 parking spaces, and high-visibility signage. The property is located along Meridian E with access from 149th St E and situated near the Sunrise neighborhood. The site offers high visibility and easy access for local commuters.



Pictures



Location and Highlights



Location Information

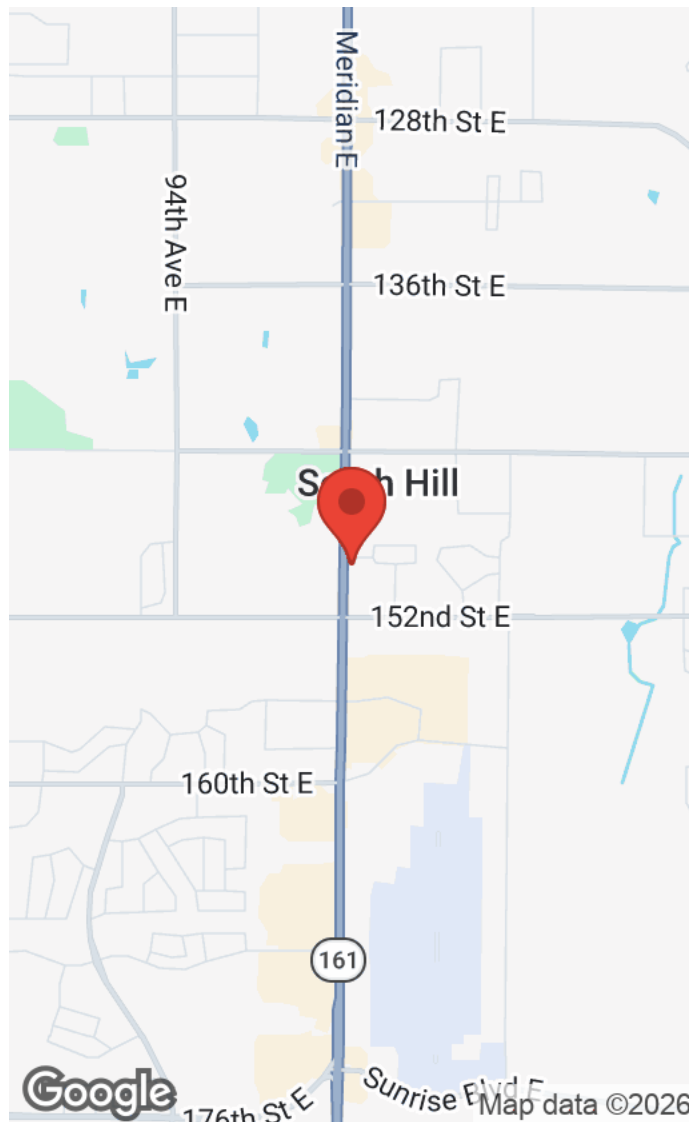
Building Name	149th & Meridian Office Building
Street Address	10202 149th Street East
City, State, Zip	Puyallup, WA 98374
County	WA - Pierce
Market	Pierce
Sub-market	Puyallup
Cross Streets	Meridian E

Location Overview

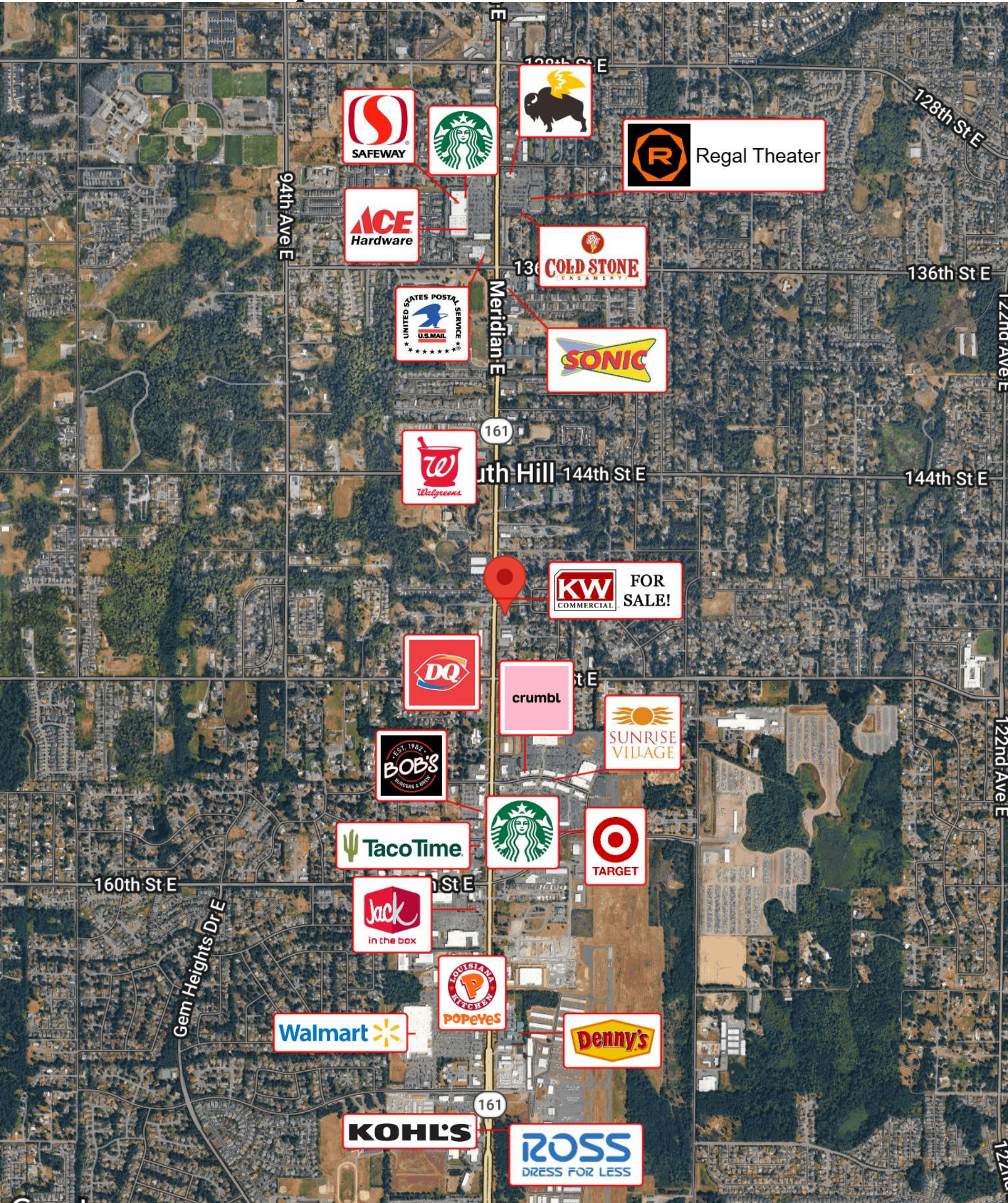
South Hill is an activity hub in the Puyallup Market. The main thoroughfare, Meridian E, sees significant traffic on a daily basis, allowing for prime exposure to all properties located along this road. The property has excellent exposure along the front of the building as well as from the prominent pylon sign.

Location Highlights

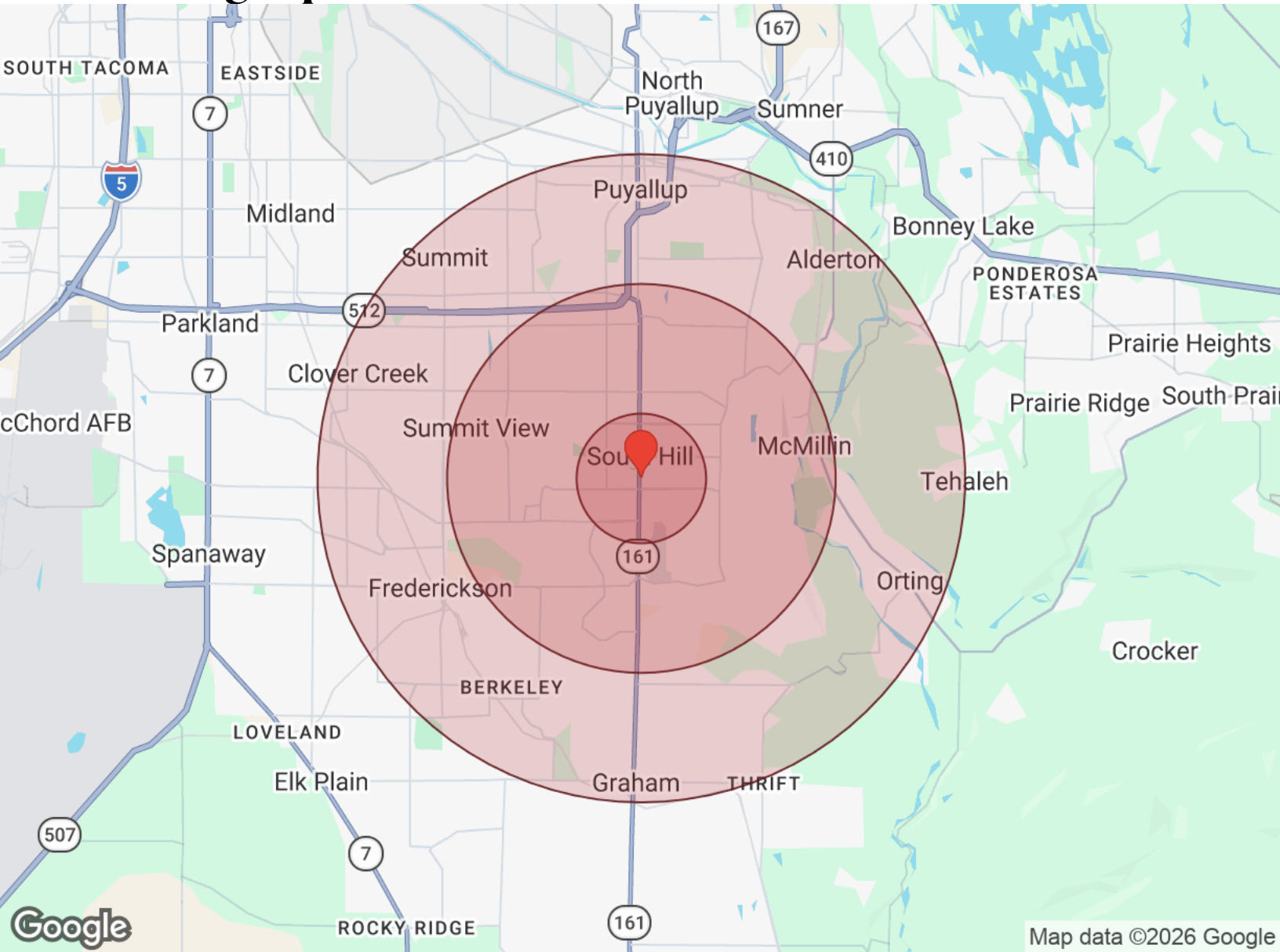
- Stable Income
- Excellent Location
- Multi-Tenant Building
- Pylon Signage



Business Map



Demographics



Map data ©2026 Google

Distance: ● 1 Mile ● 3 Miles ● 5 Miles

Population	1 Mile	3 Miles	5 Miles
Male	3,910	48,404	91,958
Female	4,126	49,557	93,223
Total Population	8,035	97,962	185,181

Race / Ethnicity	1 Mile	3 Miles	5 Miles
White	4,962	58,601	116,275
Black	522	7,719	12,815
Am In/AK Nat	63	627	1,259
Hawaiian	130	1,558	2,593
Hispanic	1,151	12,970	23,537
Asian	561	8,660	14,055
Multiracial	624	7,592	14,111
Other	21	235	519

Housing	1 Mile	3 Miles	5 Miles
Total Units	3,005	36,174	70,230
Occupied	2,823	34,141	66,083
Owner Occupied	1,884	23,652	45,916
Renter Occupied	939	10,489	20,167
Vacant	182	2,034	4,146

Age	1 Mile	3 Miles	5 Miles
Ages 0 - 14	1,713	20,838	37,939
Ages 15 - 24	953	12,127	22,349
Ages 25 - 54	3,441	43,032	79,544
Ages 55 - 64	868	9,572	19,764
Ages 65+	1,059	12,392	25,587

Income	1 Mile	3 Miles	5 Miles
Median	\$95,654	\$112,485	\$111,631
Under \$15k	165	1,374	2,409
\$15k - \$25k	34	869	1,983
\$25k - \$35k	87	951	2,160
\$35k - \$50k	213	2,153	4,238
\$50k - \$75k	488	4,303	7,904
\$75k - \$100k	513	5,123	10,195
\$100k - \$150k	624	7,960	15,693
\$150k - \$200k	320	5,660	10,383
Over \$200k	378	5,748	11,118