



FOR LEASE OR OWNER/USER OPPORTUNITY IN THE HEART OF BALLARD

Ryan Olson
Senior Vice President
ryan.olson@colliers.com
Mobile: +1 425 922 3879

Colliers Bellevue
11225 SE 6th St #240,
Bellevue, WA 98004
colliers.com



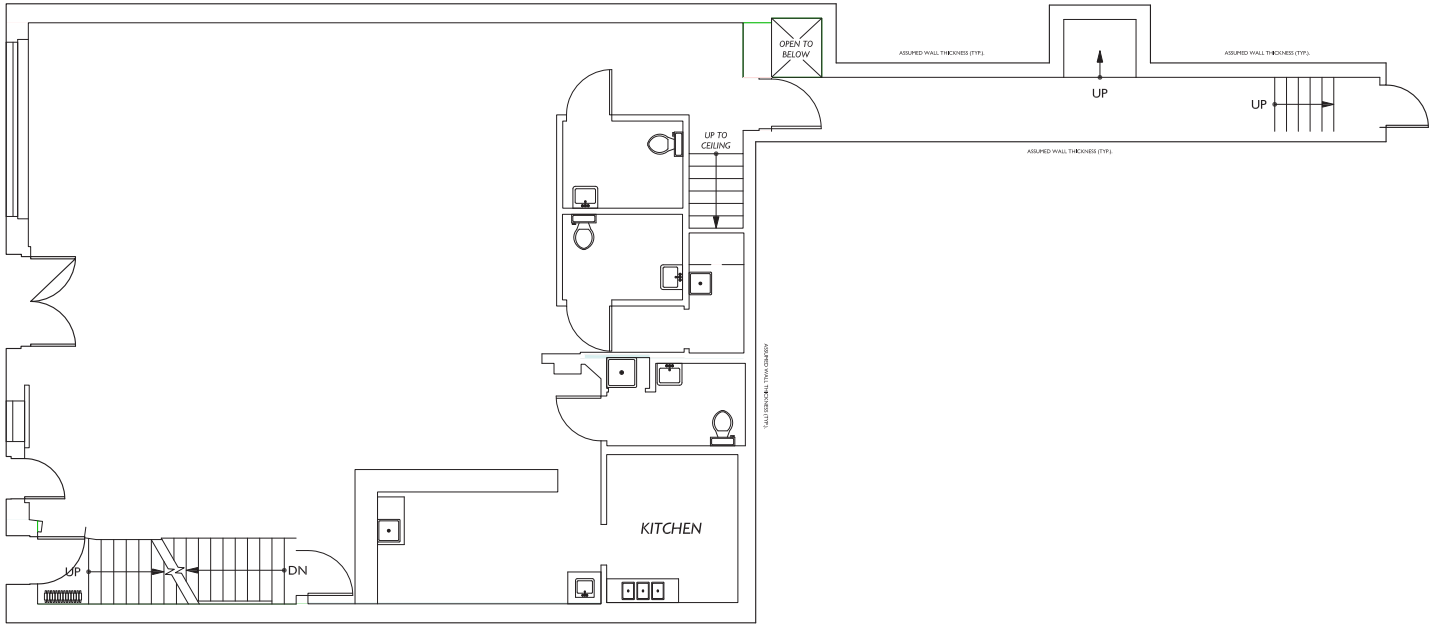
2012–2016 NW Market St. Seattle, WA 98107

- Building size: 5,568 SF total
- 1st floor & basement: 3,630 RSF
 - Perfect for retail or restaurant
 - Asking rate: \$36.00/RSF, NNN
- 2nd floor: 1,938 RSF
 - New creative loft-style space overlooking NW Market Street with private, direct entrance
 - Open floorplan with high ceiling and original brick
 - Asking rate: \$26.00/RSF, NNN
- Broadband internet access
- Located between WaFd and BofA
- Walk-score 98: walker's paradise
- Asking Sale Price: \$3,000,000

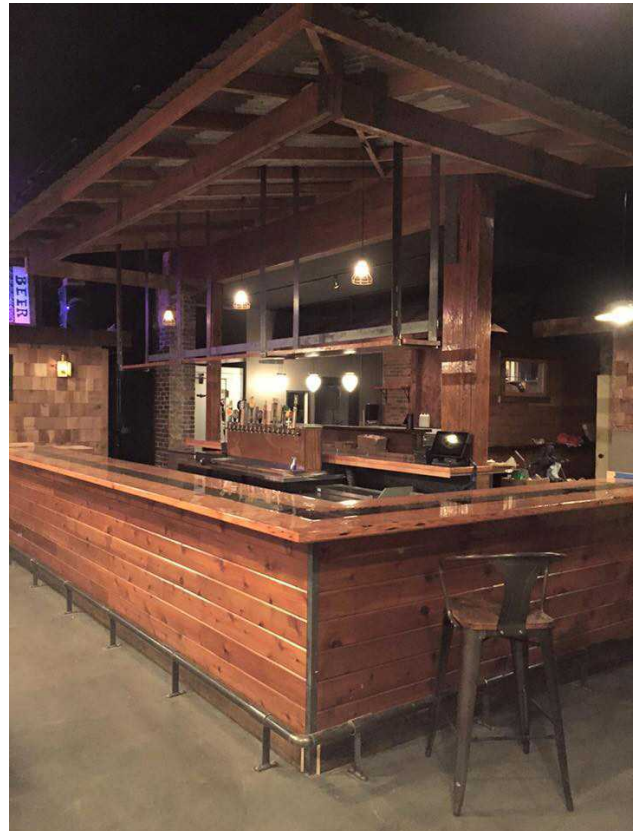
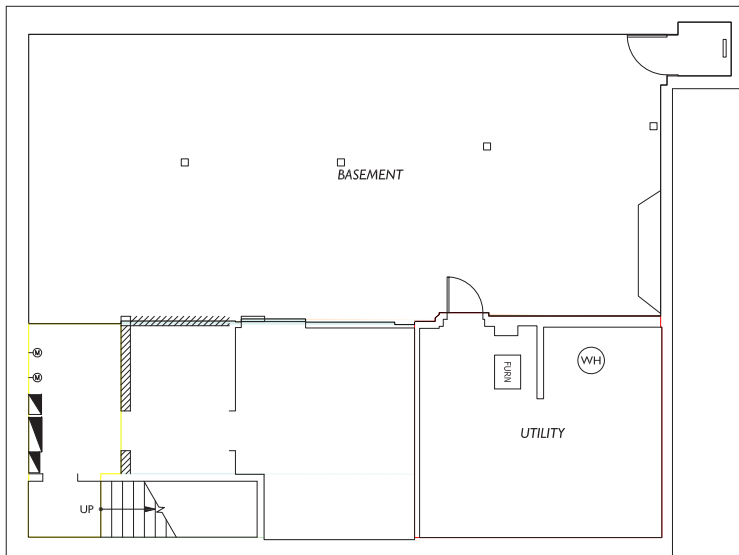
2012-2016 NW Market St.



1st Floor - Street Level



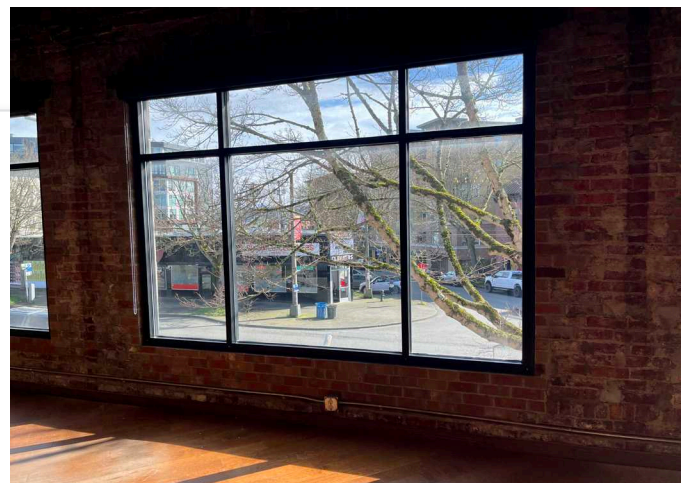
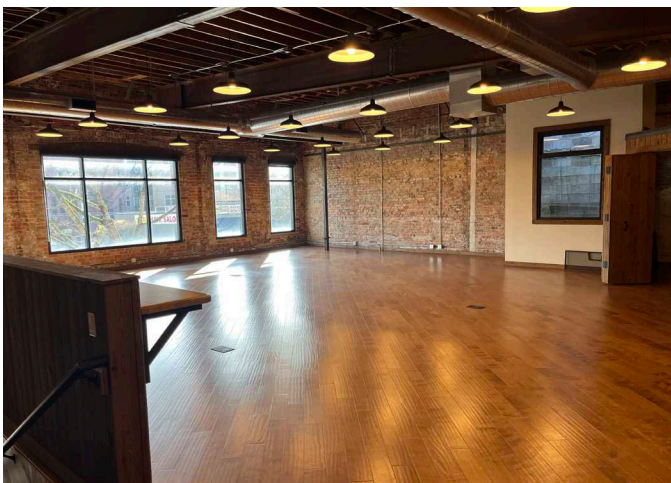
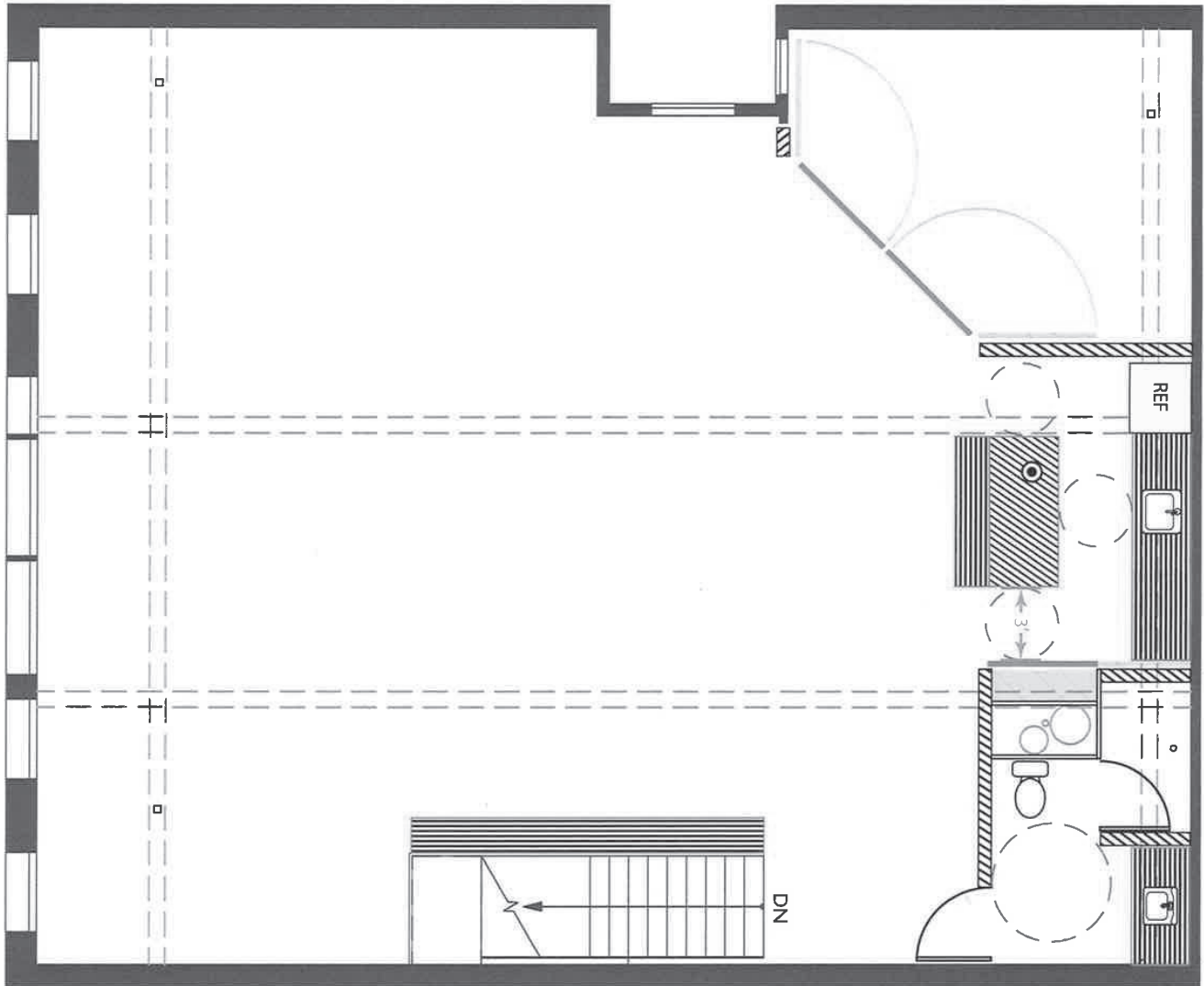
Basement

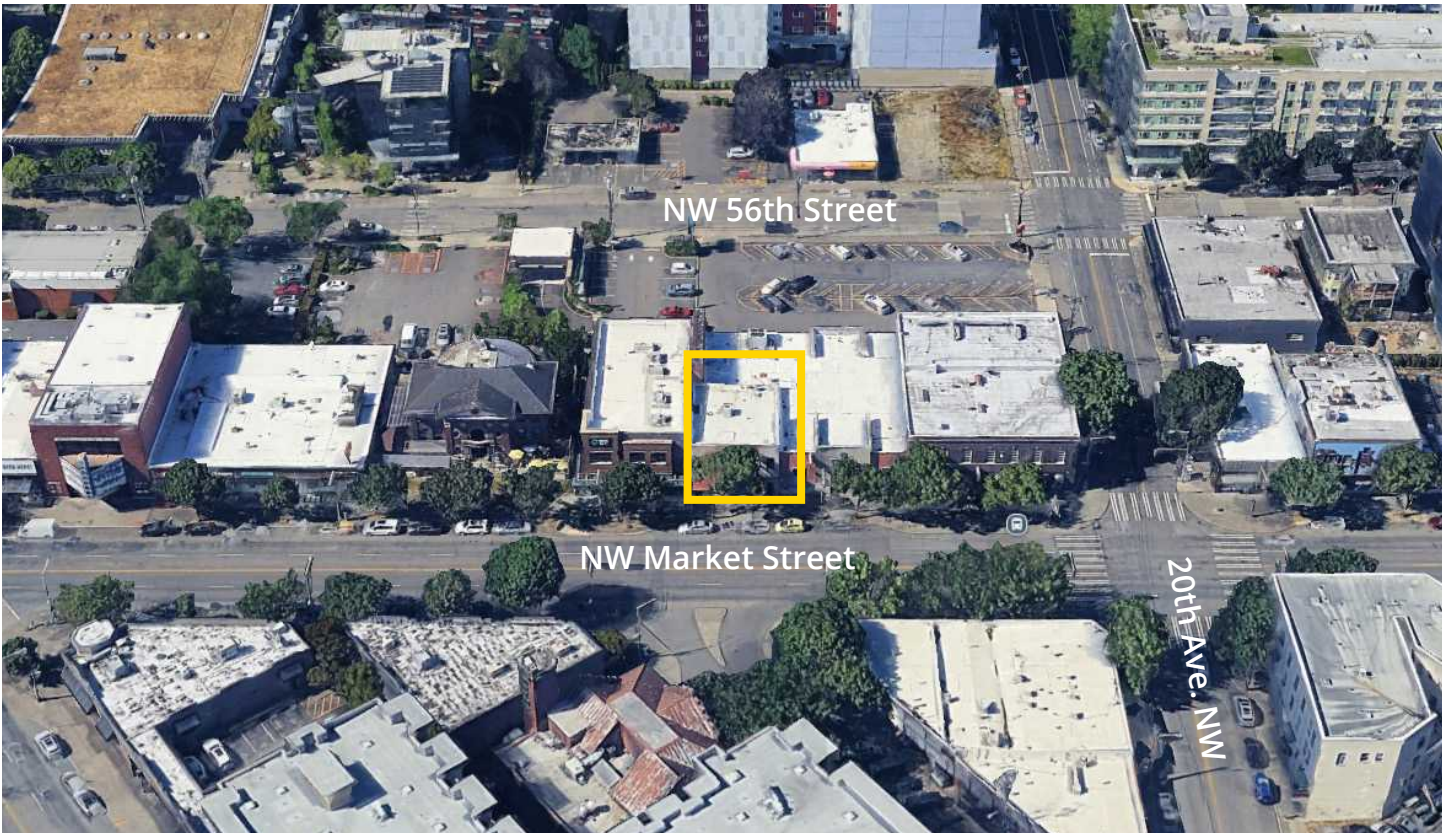
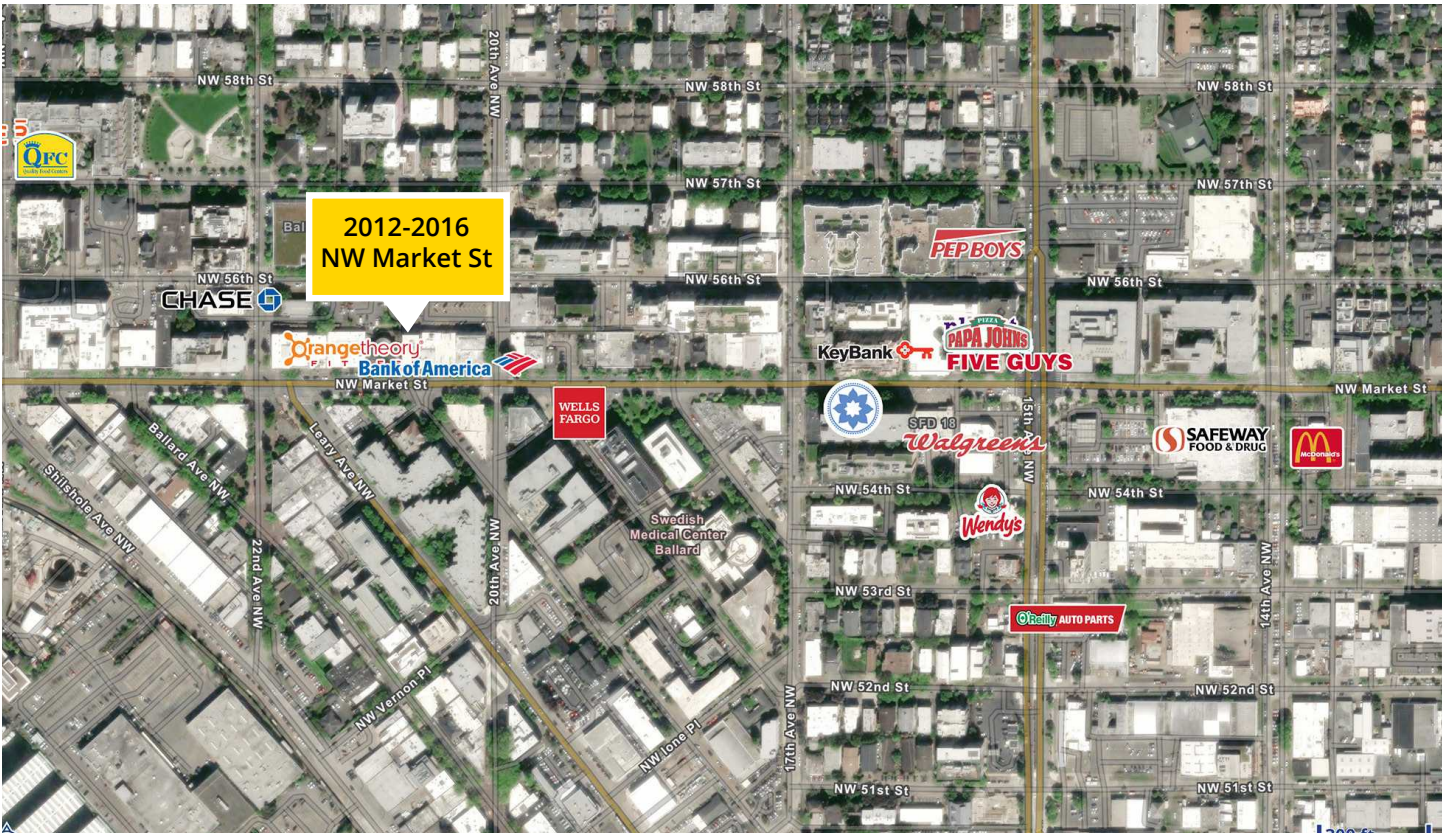


2012-2016 NW Market St.



2nd Floor - Loft Space





Ryan Olson
 Senior Vice President
 ryan.olson@colliers.com
 Mobile: +1 425 922 3879

This document/email has been prepared by Colliers for advertising and general information only. Colliers makes no guarantees, representations or warranties of any kind, expressed or implied, regarding the information including, but not limited to, warranties of content, accuracy and reliability. Any interested party should undertake their own inquiries as to the accuracy of the information. Colliers excludes unequivocally all inferred or implied terms, conditions and warranties arising out of this document and excludes all liability for loss and damages arising there from. This publication is the copyrighted property of Colliers and /or its licensor(s). © 2026. All rights reserved. This communication is not intended to cause or induce breach of an existing listing agreement.