



690 E
FRONT AVE
SPOKANE, WA



Jones Lang LaSalle Brokerage, Inc.
Real Estate License #: 01856260

ABOUT THE PROPERTY



Scenic Riverfront Location

Beautiful views of the Spokane River with direct proximity to the popular Centennial Trail.



Prime Location

Close proximity to Downtown Spokane and the thriving University District.



Excellent Connectivity

Easy access to major highways and comprehensive public transportation networks.



Development Ready

Approximately 34,848 usable square feet of developable area on a 60,984 SF (1.4-acre) site.



Strong Market Position

Well-positioned to capitalize on high demand for owner-user properties in this size range.



Limited Competition

Benefits from current market conditions with constrained available inventory driving buyer competition.



Recreational Amenities

Direct access to Centennial Trail for outdoor recreation and lifestyle appeal.



Strategic Access

Superior highway and transportation connectivity enhances development potential.

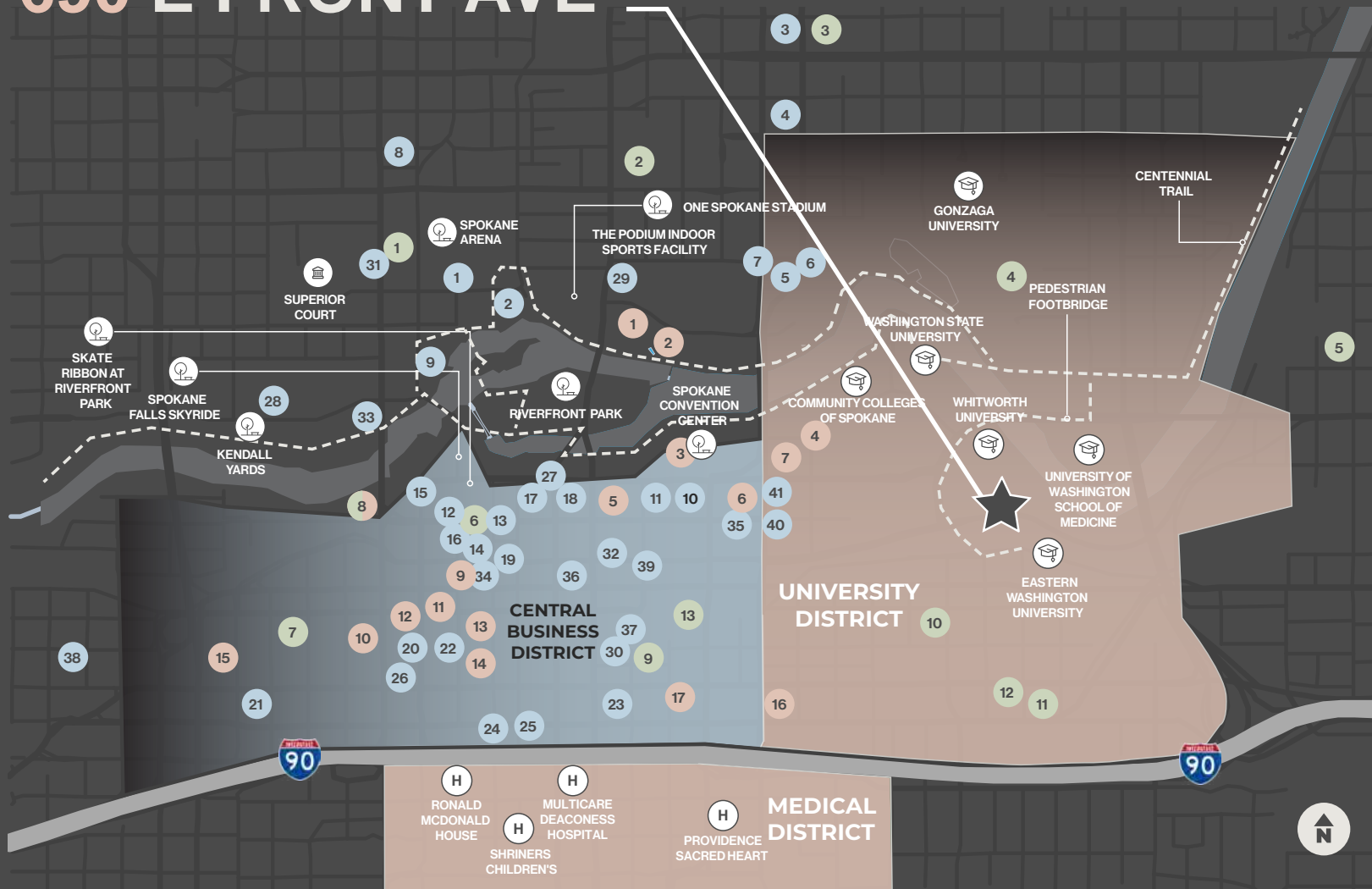


Price

\$1,250,000 (\$20.50 PSF)



690 E FRONT AVE



DINING

1. David's Pizza
2. Flour Mill & Klinkerdagger's
3. Sonic Drive-In
4. Qdoba Mexican Eats
5. Blaze Pizza
6. Chipotle Mexican Grill
7. Wendy's
8. Taco Bell
9. Anthony's at Spokane Falls
10. Chili's Grill & Bar
11. Azteca Mexican Restaurants
12. Red Robin Gourmet Burgers
13. MOD Pizza
14. P.F. Chang's
15. Panda Express
16. The Melting Pot
17. Steelhead Bar & Grille
18. Sushi.Com
19. SUBWAY® Restaurants
20. The Old Spaghetti Factory
21. Pizza Hut
22. Steam Plant
23. Arby's
24. McDonald's
25. Wild Sage
26. Mizuna
27. Wandering Table
28. Santé
29. Inland Pacific Kitchen
30. Ruins
31. Italian Kitchen
32. My Fresh Basket
33. Bistango
34. Zola
35. Observatory
36. Hogwash
37. The Elk
38. The Onion
39. The Globe
40. Baracho

GYMS & FITNESS

- | | |
|--|------------------------------|
| 1. YMCA of the Inland Northwest Corporate Office | 7. Spokane Boxing Gym |
| 2. Lilac City Fit Body Boot Camp | 8. Spokane Club (and gym) |
| 3. Crossfit Spokane | 9. Wild Walls Climbing Gym |
| 4. Kermit M. Rudolf Fitness Center | 10. Farmgirlfit |
| 5. CrossFit Dūrātus | 11. Spokane Personal Trainer |
| 6. The Spokane Club | 12. CoreFit Gym |
| | 13. The Union Yoga Studio |

HOTELS

- | | | |
|--|--|-----------------------------|
| 1. Ruby River Hotel | 7. Fairfield Inn & Suites by Marriott Spokane Downtown | 13. The Davenport Tower |
| 2. Holiday Inn Express | 8. Spokane Club (and gym) | 14. Steam Plant Hotel |
| 3. DoubleTree by Hilton Hotel | 9. The Davenport Lusso, Autograph Collection | 15. Tiki Lodge |
| 4. Courtyard by Marriott | 10. Montvale Hotel | 16. FairBridge Inn Express |
| 5. The Davenport Grand, Autograph Collection | 11. The Historic Davenport | 17. Days Inn Spokane |
| 6. Best Western Plus City Center | 12. Hotel Ruby | 18. Quality Inn |
| | | 19. Ramada Downtown Spokane |



AREA DEMOGRAPHICS

Spokane County



566,310

total population



18,820

total businesses



38.7

median age



577,147

total daytime population



0.85%

2024-2029 annual growth rate



254,724

total employees



224,095

total households



\$73,494

median household income

POTENTIAL USE

Zoning - Downtown University (DTU) - Allowed uses determined by Limited Urban Environment (LUE) Shoreline Environment Designation.

Permitted uses under LUE zoning:

Potential Industrial Uses Under L[4]/CU:

- Manufacturing facilities (light manufacturing)
- Distribution centers
- Storage facilities (beyond basic warehouses)
- Processing plants (food, materials, etc.)
- Research and development facilities
- Industrial workshops or fabrication shops
- Data centers
- Cold storage facilities
- Vehicle maintenance/repair facilities
- Equipment rental facilities

Permitted Uses (P):

- Maintenance of existing utilities or facilities
- Water-dependent commercial uses
- Water-related commercial uses
- Water-enjoyment commercial uses
- Parking, accessory to a permitted use
- Pedestrian and bicycle linkages to existing or planned transportation networks
- Maintenance roads, accessory to a permitted use
- Expansion of existing rail lines

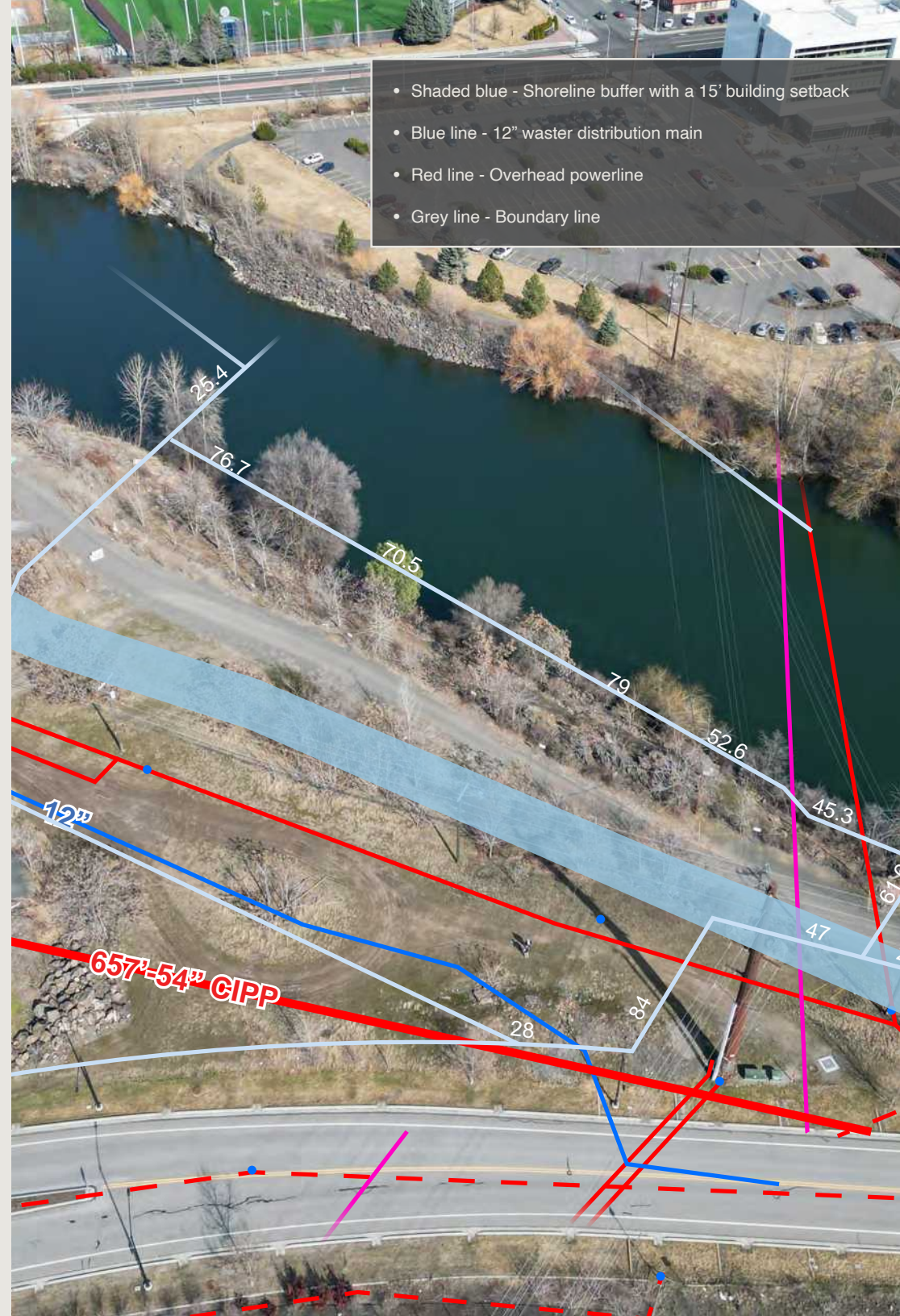
Limited Uses (L) - Allowed with special limitations:

- New construction or expansion of existing utilities or facilities
- Non-water-oriented commercial uses
- Non-water-oriented industrial uses
- Non-water-oriented institutional uses
- New local access streets or street expansions serving permitted shoreline uses

Conditional Uses (CU) - Require special approval:

- Launch ramps for small non-motorized watercraft
- Over-water or underwater utility crossings
- Water-dependent industrial uses
- Water-related industrial uses
- Water-dependent institutional uses
- Water-related institutional uses
- Water-enjoyment institutional uses
- In-stream structures
- Water-dependent recreational uses
- Water-related recreation
- Water-enjoyment recreation
- Non-water-oriented recreation
- All subdivisions (including binding site plans)

For additional zoning details and site limitations contact the City of Spokane Planning Department



WHY SPOKANE?

Live here. Work here. Play here.

Top 9 reasons to upgrade your quality of life in Eastern Washington

LIVE.



0%
No state income tax



\$400,000
Median home price



19 MINUTES
Average daily commute



REGIONAL FLIGHT HUB
Domestic and international travel through Spokane International Airport

WORK.



60%
Less expensive than Seattle commercial office space



#31
Surge cities for startups by Inc. magazine 2019



ACCESS TO TALENT
5 universities & 2 medical schools within 80-miles



REGIONAL MEDICAL HUB
Great access to medical services and innovation

PLAY.



5 SKI RESORTS
Within 1.5 hours of downtown



DOZENS OF LAKES
Within 1 hour of downtown



WINE & BREW
8 microbreweries & 26 wine tasting rooms



REGIONAL SPORTS CENTERS
Spokane Arena, SPS Memorial Stadium, and The Podium



MICHAEL SHARAPATA
Senior Managing Director
+1 509 822 0088
michael.sharapata@jll.com

ROBERT CHRISTIANSEN
Vice President
+1 509 200 4774
robert.christiansen@jll.com

Although information has been obtained from sources deemed reliable, JLL does not make any guarantees, warranties or representations, express or implied, as to the completeness or accuracy as to the information contained herein. Any projections, opinions, assumptions or estimates used are for example only. There may be differences between projected and actual results, and those differences may be material. JLL does not accept any liability for any loss or damage suffered by any party resulting from reliance on this information. If the recipient of this information has signed a confidentiality agreement with JLL regarding this matter, this information is subject to the terms of that agreement. ©2025 Jones Lang LaSalle Brokerage, Inc. All rights reserved.