

FOR SALE OR LEASE

WHEELIE POP BREWING BUILDING

1110 NW 50TH STREET | SEATTLE, WA



WHEELIE POP BREWING BUILDING

3,000 SF Brewery and Taproom Buildout Available in Seattle's Ballard Neighborhood

3,000 SF Building

4,300 SF Land

Brewery and Tap Room Buildout

Floor Drains

Cooler

14' Clear Height

3 Grade Level Roll-Up Doors

Loading Access from the Alley

1-1/2" Water Line

4" Sewer Line

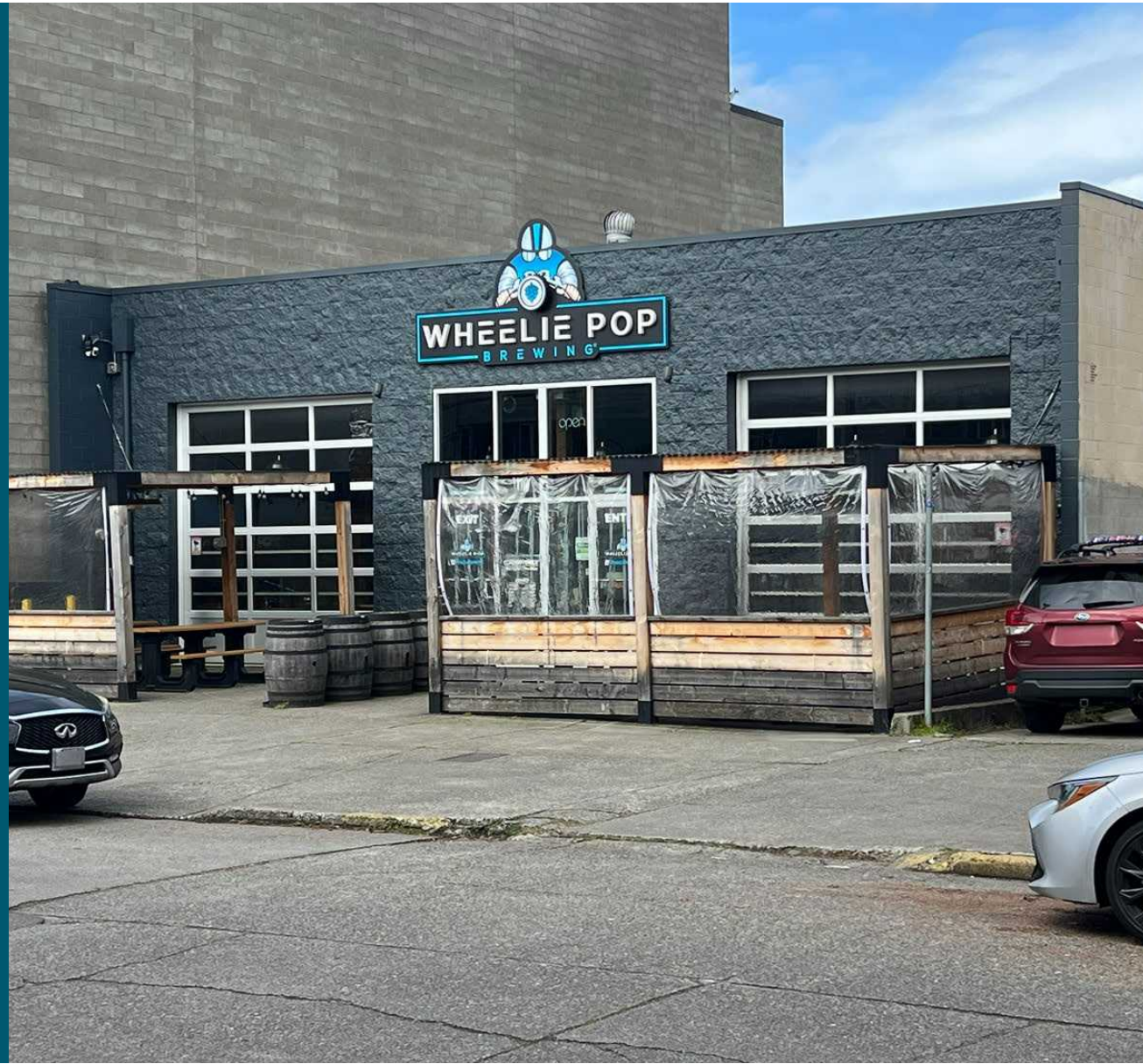
2" Gas Line

240V 3-Phase Power

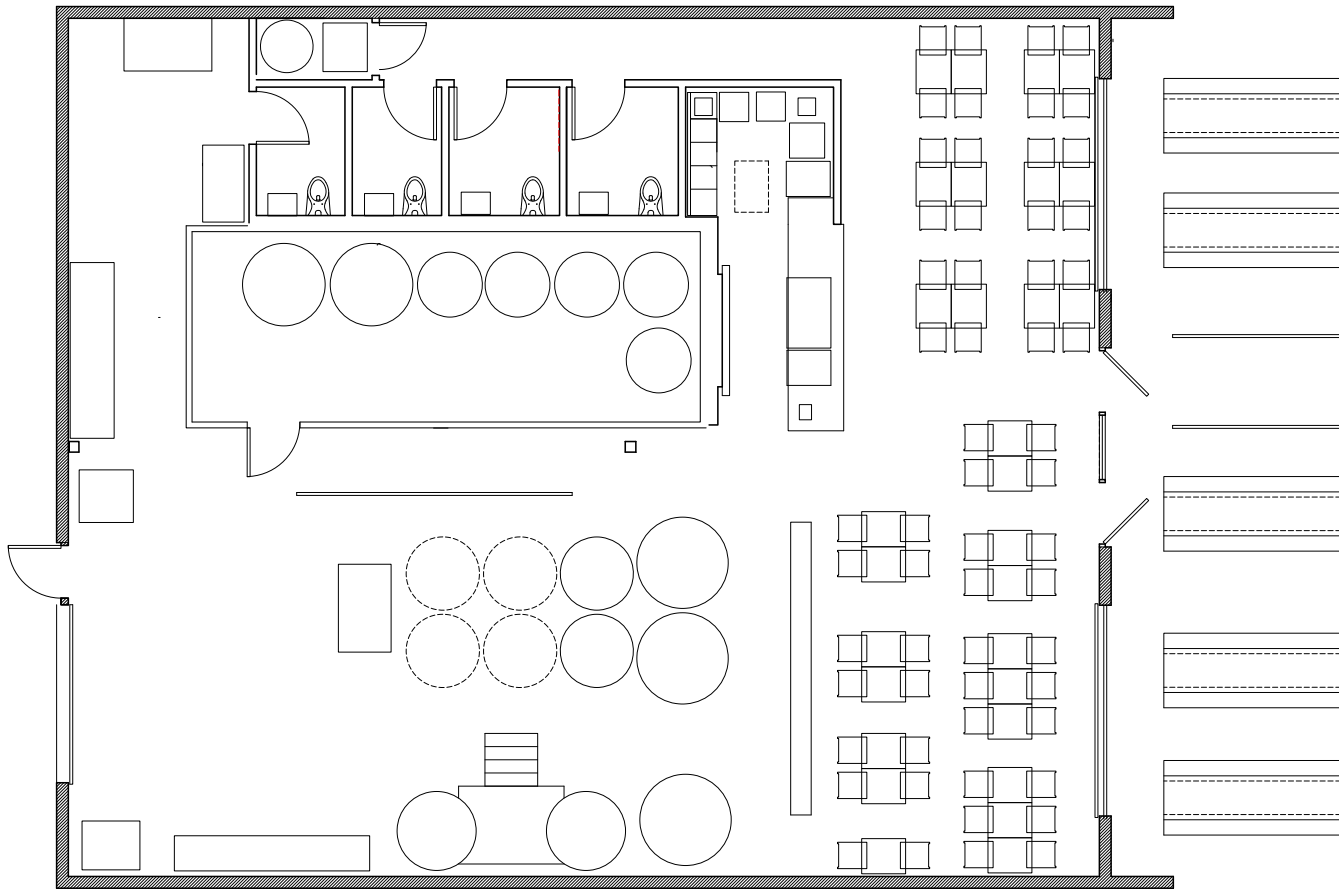
Brewery Equipment Available for Sale

\$2,200,000 Purchase Price

\$7,500/Month, NNN Lease Rate



FIRST FLOOR PLAN



3,000 SF

BUILDING

4,300 SF

LAND

NOW

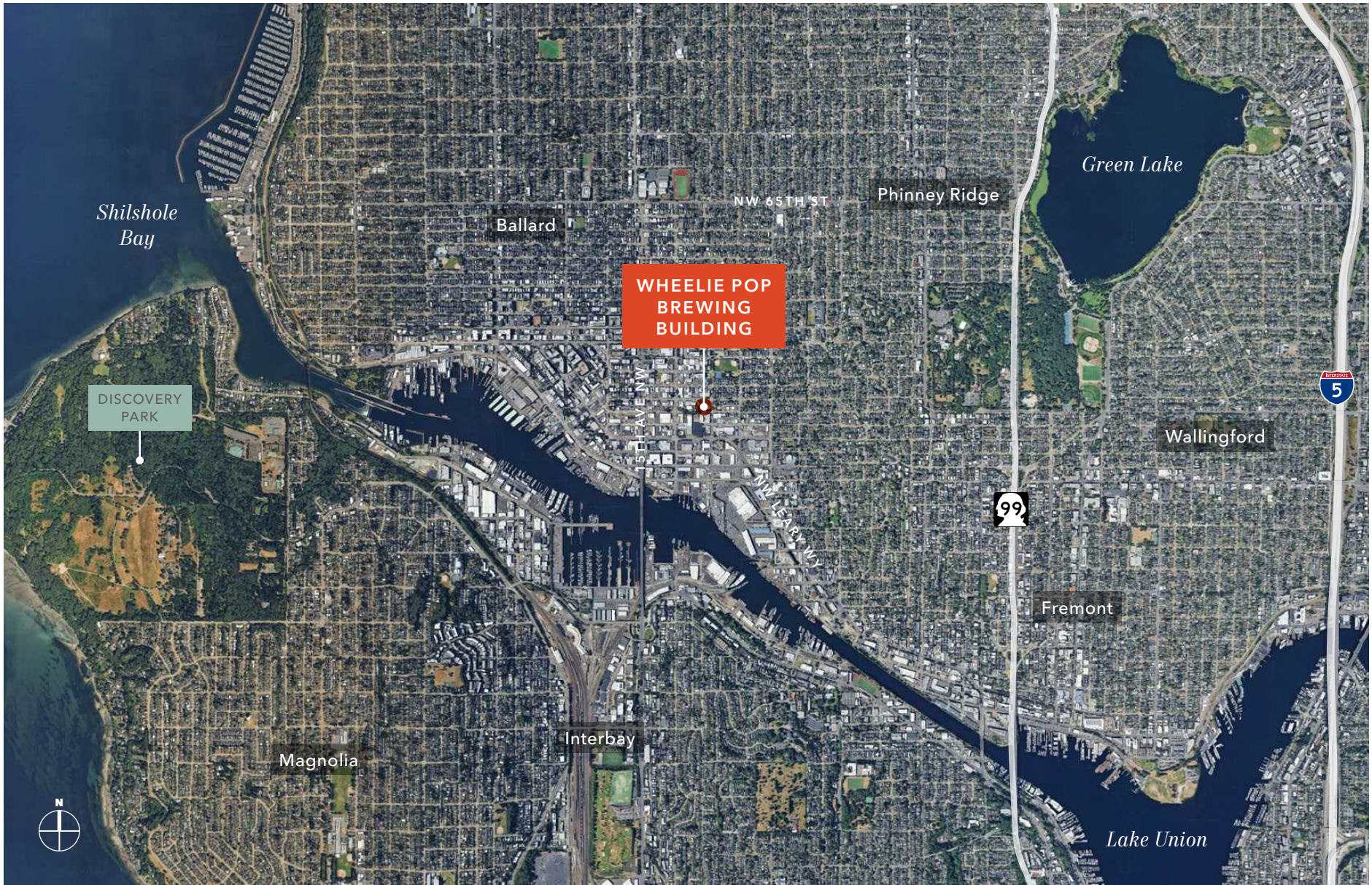
AVAILABLE



WHEELIE POP BREWING BUILDING



WHEELIE POP BREWING BUILDING



WHEELIE POP BREWING BUILDING



Exclusively leased by

JEFF LOFTUS

206.248.7326

jeff.loftus@kidder.com

KEN HIRATA

206.296.9625

ken.hirata@kidder.com

KIDDER.COM

This information supplied herein is from sources we deem reliable. It is provided without any representation, warranty, or guarantee, expressed or implied as to its accuracy. Prospective Buyer or Tenant should conduct an independent investigation and verification of all matters deemed to be material, including, but not limited to, statements of income and expenses. Consult your attorney, accountant, or other professional advisor. All Kidder Mathews designs are the sole property of Kidder Mathews. Branded materials and layouts are not authorized for use by any other firm or person.

