



7.61 Acres of **Shovel Ready** Industrial Land

NORTHLAKE INDUSTRIAL PARK

Lake Stevens, WA

Presented by
Rob Serviss

425-971-4060

www.ServissCommercial.com

SERVISS
COMMERCIAL
RE/MAX ELITE



FINAL LOT COUNT FLEXIBLE

Contractor Yards • Shops • Warehouses • Manufacturing • Distribution

General Industrial Zoning - One of Broadest Use Categories in Lake Stevens

TABLE OF CONTENTS

DISCLAIMER - 4

EXECUTIVE SUMMARY - 5

OFFERING DETAILS - 7

PROPERTY OVERVIEW - 9

DEVELOPMENT FLEXIBILITY - 10

ZONING OVERVIEW - 14

SITE PLAN & LAYOUT - 16

AERIAL PHOTOGRAPHY - 20

LOCATION OVERVIEW - 24

MARKET OVERVIEW - 27

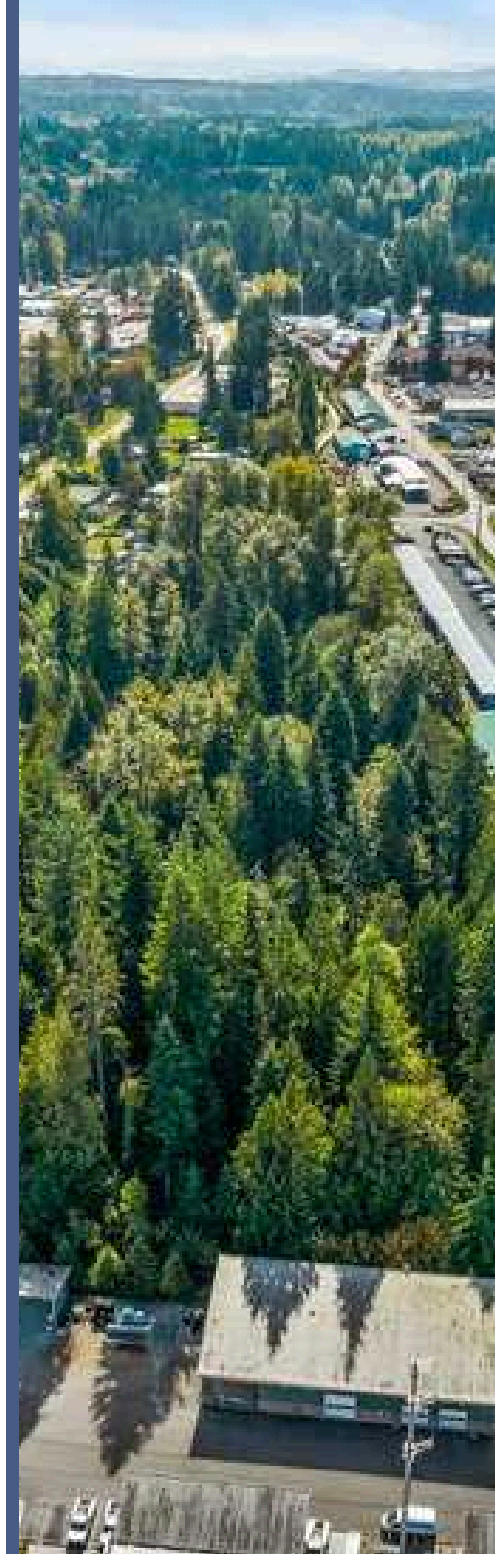
DUE DILIGENCE SUMMARY - 29

TEAM OVERVIEW - 31



CONFIDENTIALITY & DISCLAIMER

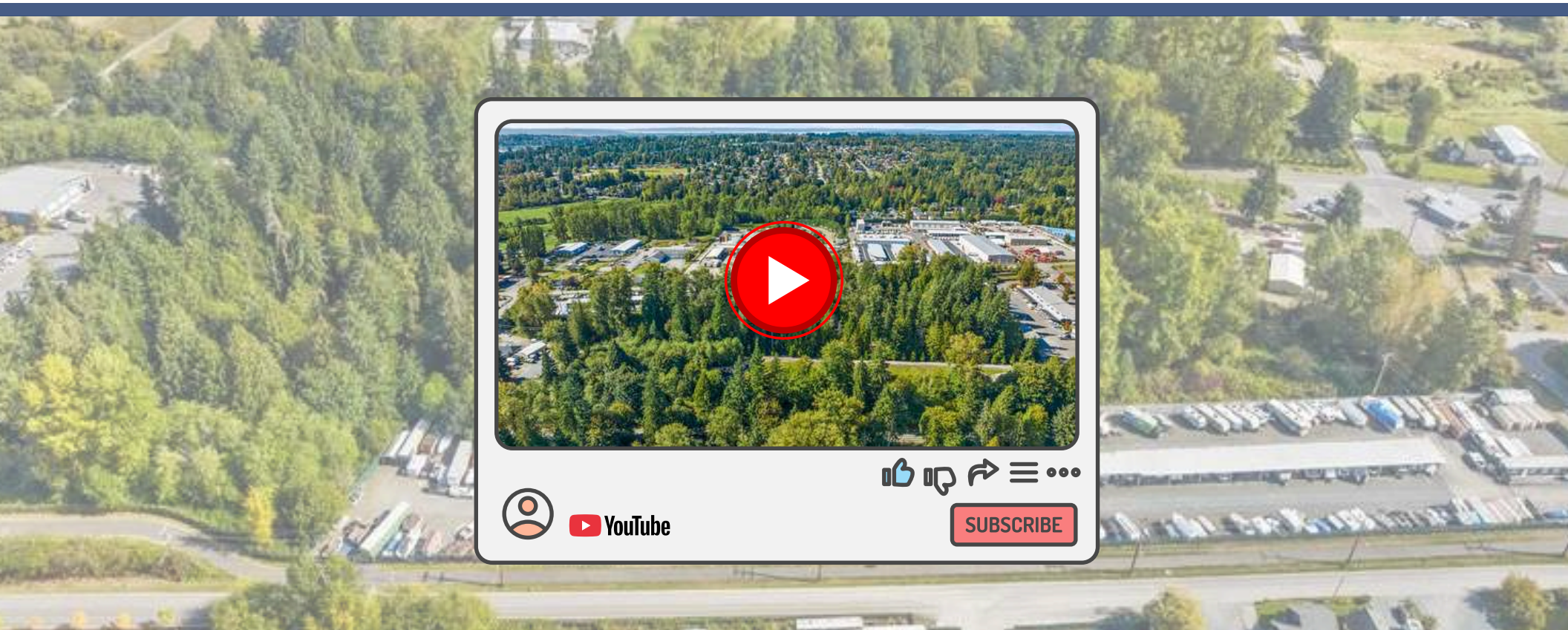
All materials and information received from or derived by RE/MAX Elite, its directors, officers, agents, advisors, affiliates, and/or any third-party sources are provided without representation or warranty as to completeness, veracity, accuracy, condition of the property, compliance or noncompliance with applicable governmental requirements, developability or suitability, financial performance of the property, projected financial performance of the property for any party's intended use, or any other matter. Neither RE/MAX Elite, its directors, officers, agents, advisors, nor affiliates makes any representation or warranty, express or implied, as to the accuracy or completeness of the materials or information provided, derived, or received. Materials and information from any source, whether written or verbal, that may be furnished for review are not a substitute for a party's own active due diligence to determine these and other matters of significance to such party. RE/MAX Elite will not investigate or verify any such matters or conduct due diligence for a party unless otherwise agreed to in writing. EACH PARTY SHALL CONDUCT ITS OWN INDEPENDENT INVESTIGATION AND DUE DILIGENCE. Any party contemplating, under contract for, or in escrow for a transaction is urged to verify all information and to conduct its own inspections and investigations, including through appropriate independent third-party professionals selected by such party. All financial data should be verified by the party, including by obtaining and reading applicable documents and reports and consulting appropriate independent professionals. RE/MAX Elite makes no warranties or representations regarding the veracity, completeness, or relevance of any financial data or assumptions. RE/MAX Elite does not serve as a financial advisor to any party regarding any proposed transaction. All data and assumptions regarding financial performance, including those used for financial modeling purposes, may differ from actual data or performance. Any estimates of market rents and/or projected rents that may be provided to a party do not necessarily mean that rents can be established at or increased to that level. Parties must evaluate any applicable contractual and governmental limitations, as well as market conditions, vacancy factors, and other issues, in order to determine rents for the property. Legal questions should be discussed by the party with an attorney. Tax questions should be discussed by the party with a certified public accountant or tax attorney. Title questions should be discussed by the party with a title officer or attorney. Questions regarding the condition of the property and whether the property complies with applicable governmental requirements should be discussed by the party with appropriate engineers, architects, contractors, other consultants, and governmental agencies. The offering party is under contract to purchase the property and has obtained authorization from the current recorded owner to market the property for assignment or resale prior to closing. For additional information, please contact Rob Serviss.



EXECUTIVE SUMMARY

A Shovel Ready Industrial Development Opportunity

Northlake Industrial Park is a 7.61-acre industrial development site located in the Hartford Industrial Area of Lake Stevens, WA. With General Industrial zoning, completed due diligence, and entitlements complete prior to delivery, the property offers buyers an exceptionally rare opportunity to acquire scalable, construction-ready industrial land in a supply-constrained submarket.



The approved Traffic Impact Analysis supports up to approximately 90,000 square feet of industrial building area on the site, giving developers significant flexibility and the ability to maximize density.

Northlake Industrial Park is tailored for contractors, trades, manufacturing users, storage, distribution, and industrial developers seeking flexibility, proximity, and long-term upside.

With the major pre-development entitlement work complete, the project supports an efficient path to construction. Permits and civil engineering approval are nearly complete allowing a buyer to move directly into horizontal improvements, and vertical construction.

This is a de-risked, buildable site suited for developers seeking certainty on schedule and a streamlined start to construction.



Offering Details

Asking Price	\$3,950,000 (\$11.92 per sq ft)
Total Size	7.61 Acres (per survey)
Zoning	Industrial (I) - City of Lake Stevens
Delivery	Fully entitled with clearing & grading permits + binding site plan & civil engineering
Conditions	Pads configurable/combined during final review
Utilities	Sewer available via Developer Extension Agreement; septic also allowed. Water/Power available.





6
65,317 SF

5
64,056 SF

4
32,667 SF

3
32,694 SF

2
30,923 SF

1
28,741 SF

PRIVATE ROAD A

PRIVATE ROAD A

PRIVATE ROAD A

STORMWATER TRACT

CRITICAL AREA OPEN SPACE

N MACHIAS ROAD

29TH ST NE

OLD HARTFORD DRIVE

SITE PLAN OVERLAY FOR REFERENCE ONLY. FINAL SITE PLAN TO BE DETERMINED.

PROPERTY OVERVIEW

Northlake Industrial Park offers:

- Level topography ideal for industrial construction
- Flexible lot shaping depending on desired end user
- Dedicated stormwater and critical-area tracts
- Excellent truck access via Hwy 9, Hwy 2, and I-5
- A location inside the city's targeted Industrial Growth Center
- Traffic Impact Analysis supports development of up to ±90,000 SF of industrial building area

With nearly all due diligence complete and entitlements advancing, buyers save significant time and cost, giving the site a competitive advantage over raw, unentitled tracts elsewhere in Snohomish County.



Sample Industrial Uses

Zoning supports nearly all industrial uses, including:

- Contractor yards
- Small-bay industrial space
- Light & heavy manufacturing
- Fleet/vehicle storage
- Warehousing & distribution
- Flex industrial
- Fabrication & specialty manufacturing
- Outdoor storage operations



ZONING OVERVIEW





General Industrial (I) — Lake Stevens

The Industrial zone allows:

- Manufacturing (light & heavy)
- Fabrication
- Warehouse & distribution
- Contractor yards
- Storage yards
- Heavy equipment storage
- Trades shops
- Flex industrial

The City's policy is to apply the **least restrictive** combination of dimensional and permitting standards.

This means **greater freedom** in how the buyer develops the site.

SITE PLAN & LAYOUT



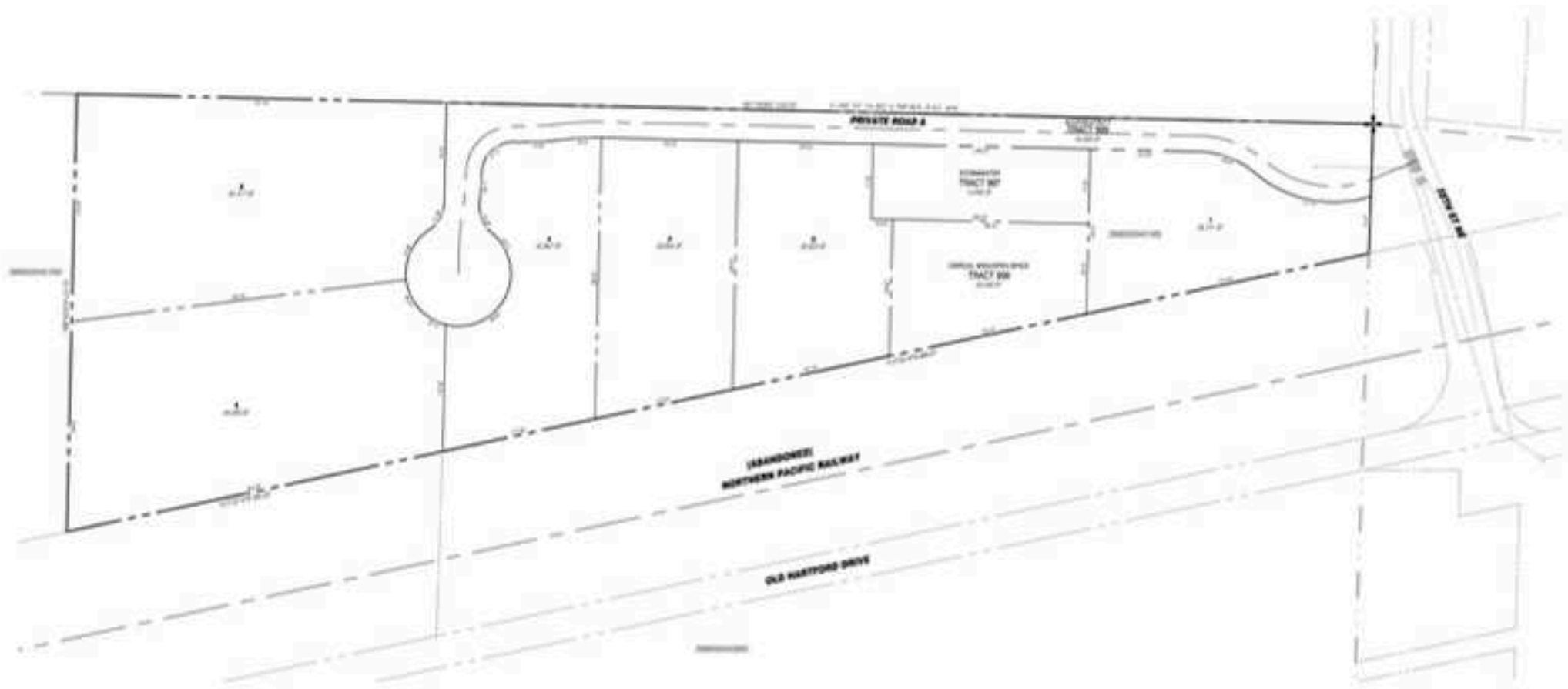
Conceptual Pad Layout (6 Pads)

6 pads ranging in size between $\frac{2}{3}$ of an acre to 1.5 acres.

The site's traffic capacity has already been evaluated, and the Traffic Impact Analysis supports up to $\pm 90,000$ square feet of building area across the pad configuration. This provides developers meaningful flexibility when designing final building footprints.

- Pad 1: 28,741 SF
- Pad 2: 30,923 SF
- Pad 3: 32,694 SF
- Pad 4: 36,667 SF
- Pad 5: 64,056 SF
- Pad 6: 65,317 SF





Site Circulation & Access

- Direct access from 28th St NE
- Machias Rd is the Lake Stevens truck route
- Internal circulation can be redesigned
- Ample turning radii for commercial vehicles
- Multiple access points possible



Utility Overview & Developer Extension Agreement

- Sewer available via Developer Extension Agreement (DEA)
- Water and power available nearby in frontage
- Stormwater managed onsite via approved tracts

AERIAL PHOTOGRAPHY





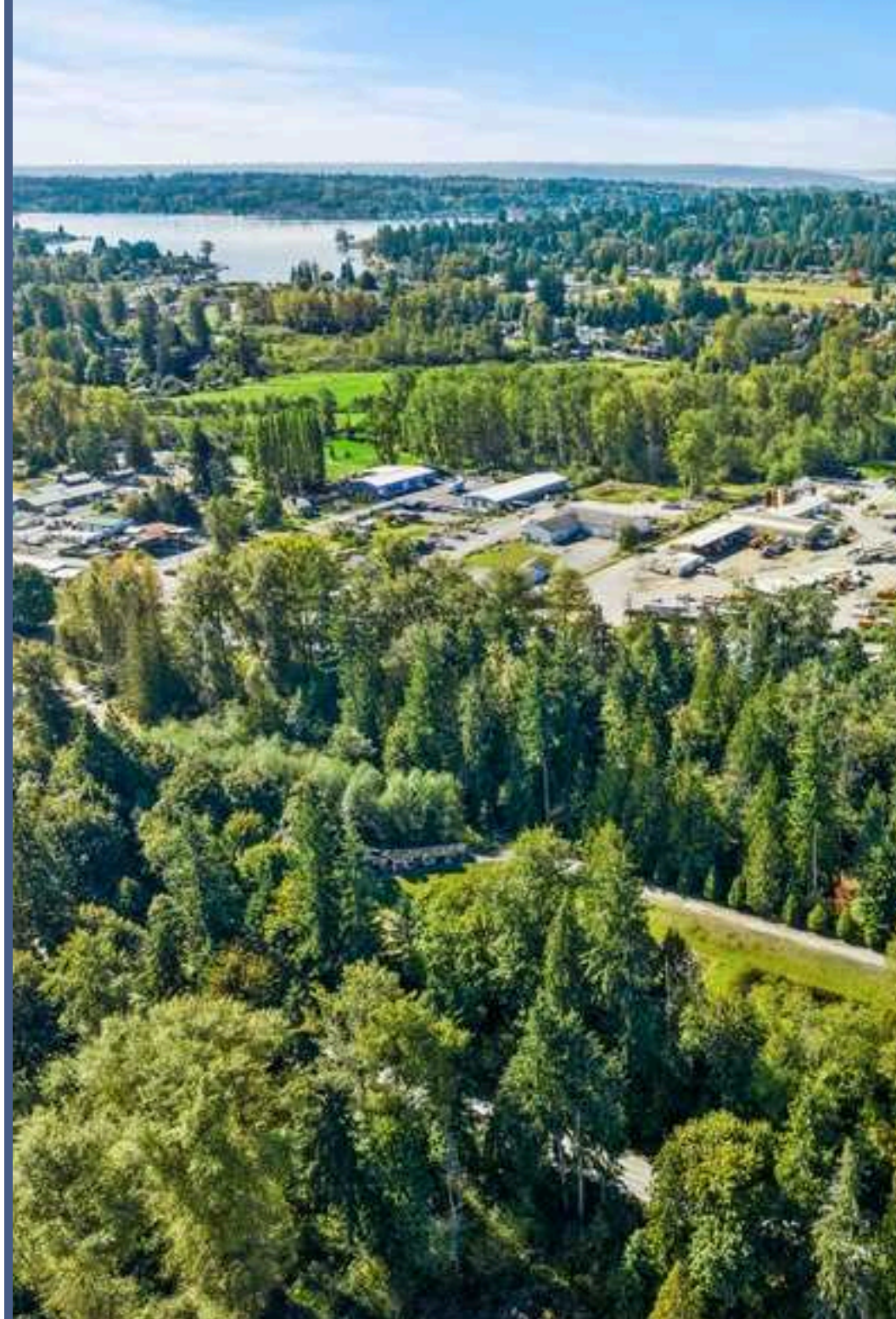




Before (Existing treed condition) & After (Cleared, graded conceptual presentation)



LOCATION OVERVIEW

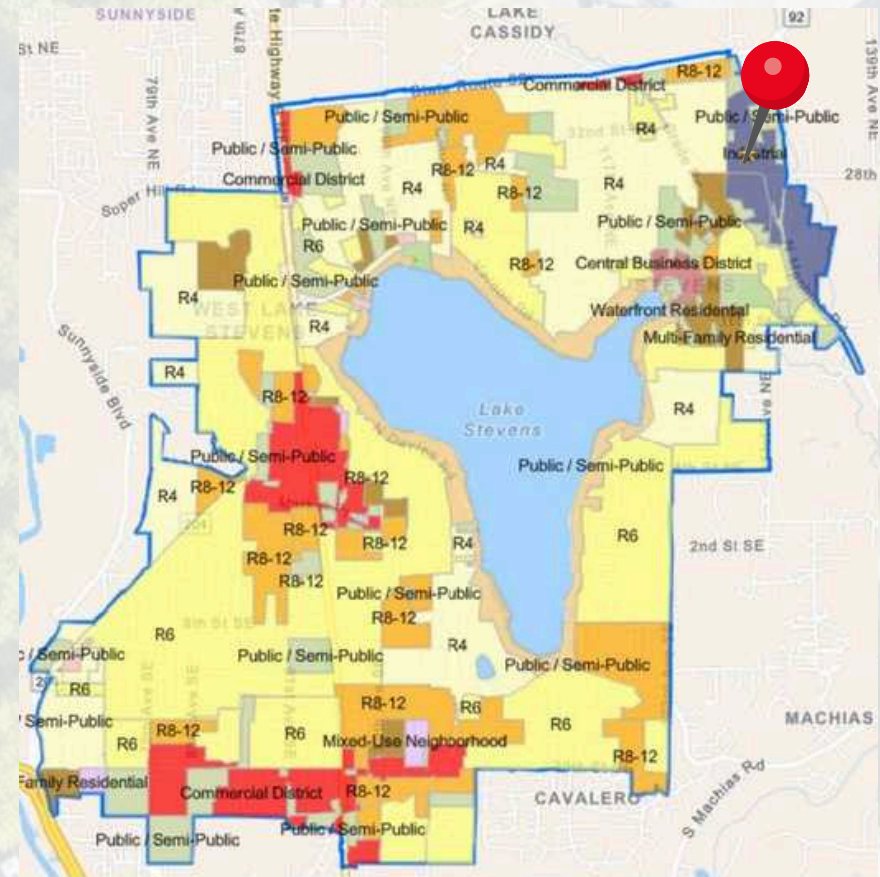


Hartford Industrial Area Profile

Lake Stevens designated Hartford as a Primary Economic Growth Center, with investments in:

- Infrastructure
- Industrial expansion
- Employment land rezoning
- Annexations to support growth

This site sits directly inside the city's **industrial expansion path.**



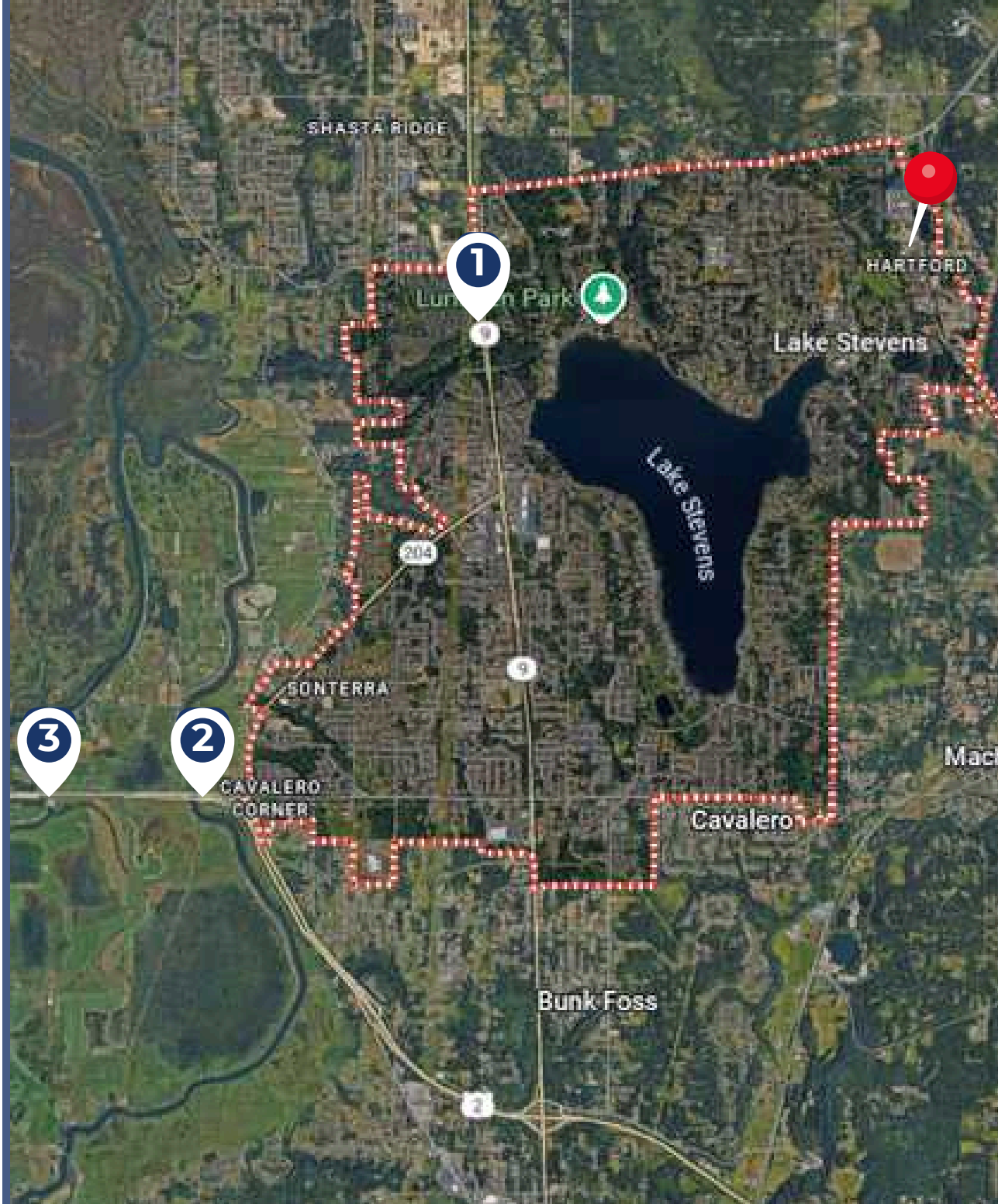


Regional Connectivity

- (1) 3.5 miles to Highway 9
- (2) 7.5 miles to US Highway 2
- (3) 10 miles to Interstate 5 & Everett

Proximity to Ports & Airports

- Port of Everett
- Paine Field Airport
- Regional distribution corridors



MARKET OVERVIEW





Snohomish County Industrial Market

- Extremely limited supply of small industrial land
- Strong tenant demand for contractor-friendly spaces
- Almost no available 1–4 acre industrial pads
- Industrial vacancy rates remain among the lowest in WA

Few available industrial land sites in Snohomish County offer both flexible layouts and the ability to support ±90,000 square feet of industrial development, as confirmed by the existing TIA.

Supply & Demand Dynamics

Demand driven by:

- Trades
- Logistics/distribution
- Local service providers
- Manufacturing firms relocating from King County

Contractor Yard & Small-Bay Demand Drivers

Contractor yards and small industrial pads are **the most undersupplied product type** in Snohomish County. Northlake Industrial Park is positioned to serve these users exceptionally well.

DUE DILIGENCE SUMMARY





Permits & Entitlements

- Clearing & grading permits in hand
- Binding site plan (in review)
- Civil Engineering plans at 90% on and offsite

Utility Information

- Sewer extension available via DEA
- Septic a viable option
- City of Lake Stevens is currently extending sewer service north up 131st to within close proximity to site
- Water and power nearby

Critical Areas Summary

- Wetland protection & stormwater tracts already included
- Development areas defined & efficient

Reports & Studies

Available to qualified buyers:

- Critical Areas Report
- Geotechnical Report
- Traffic Impact Study Completed and approved; supports up to approximately 90,000 square feet of industrial building space under current traffic assumptions.
- Pre-Application Letter
- Survey
- Tree survey
- Civil engineering plans

Serviss COMMERCIAL

At Serviss Commercial, we are driven by a passion for thorough analysis and clear communication that makes complex information easy to understand. Our dedicated team excels in providing clear, actionable insights to help you navigate and succeed in today's complex market environment. We don't just show you opportunities; we guide you through every step of the process, ensuring you secure the best deals with confidence and clarity.

Our Services Include:

- Strategic Property Marketing
- Investment Sales & Acquisition Advisory
- Lease Negotiation & Tenant Retention
- Comprehensive Market & Financial Analysis
- Portfolio Optimization & Asset Management

Call us today!



425-971-4060



rob@servisscommercial.com



www.servisscommercial.com



1800 Bickford Ave #206
Snohomish, WA 98290





SERVISS COMMERCIAL

RE/MAX ELITE

ROB SERVISS

425-971-4060
rob@servisscommercial.com
www.servisscommercial.com

RE/MAX Elite

1800 Bickford Ave #206
Snohomish, WA 98290