

FOR SALE

CPNINE

EASTSIDE INDUSTRIAL



BRODERICK
GROUP

22214 20TH AVE SE | BOTHELL, WASHINGTON

CPNINE

EASTSIDE INDUSTRIAL

BRODERICK
GROUP



ASKING PRICE
\$12,775,000

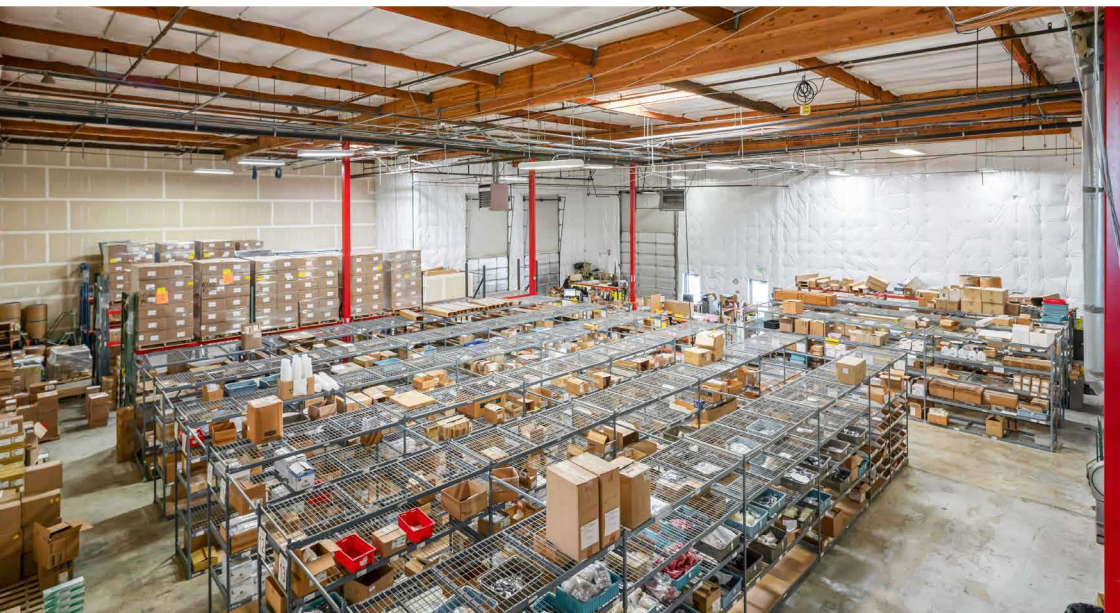
BUILDING HIGHLIGHTS

- SALE-LEASE BACK THRU AUGUST 2028
- APPROX. 37,978 SF TOTAL
- 21,983 SF WAREHOUSE
- 10,585 SF OFFICE
- 5,410 SF 2ND FLOOR STORAGE
- 2.38 ACRES
- WAREHOUSE CLEAR HEIGHT:
APPROX. 24' 6" - 26'
- POWER:
APPROX. 600 AMPS 480V / 208 V 3 PHASE
- LOADING: 2 GRADE LEVEL LOADING DOORS, 6
DOCK HIGH LOADING DOORS



CPNINE

EASTSIDE INDUSTRIAL



CPNINE

EASTSIDE INDUSTRIAL

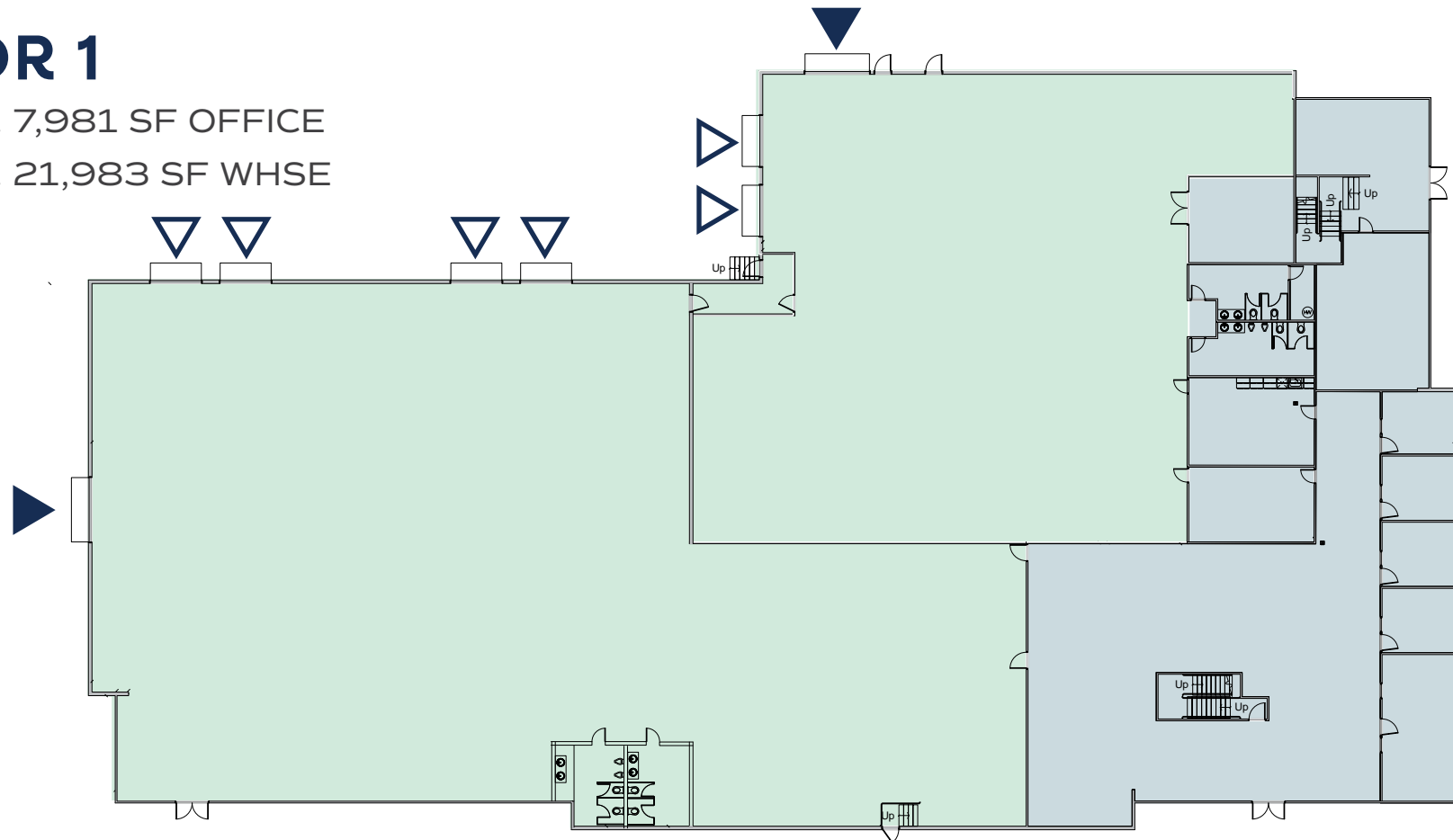
22214 20TH AVE SE | BOTHELL, WASHINGTON

FOR SALE

FLOOR 1

APPROX. 7,981 SF OFFICE

APPROX. 21,983 SF WHSE



■ WAREHOUSE ■ OFFICE ▲ DOCK HIGH ▲ GRADE LEVEL

BRODERICK
· GROUP ·

ERIC MEUSSNER | 425.274.4282
meussner@broderickgroup.com

TYLER SLONE | 425.274.4281
sloane@broderickgroup.com

CPNINE

EASTSIDE INDUSTRIAL

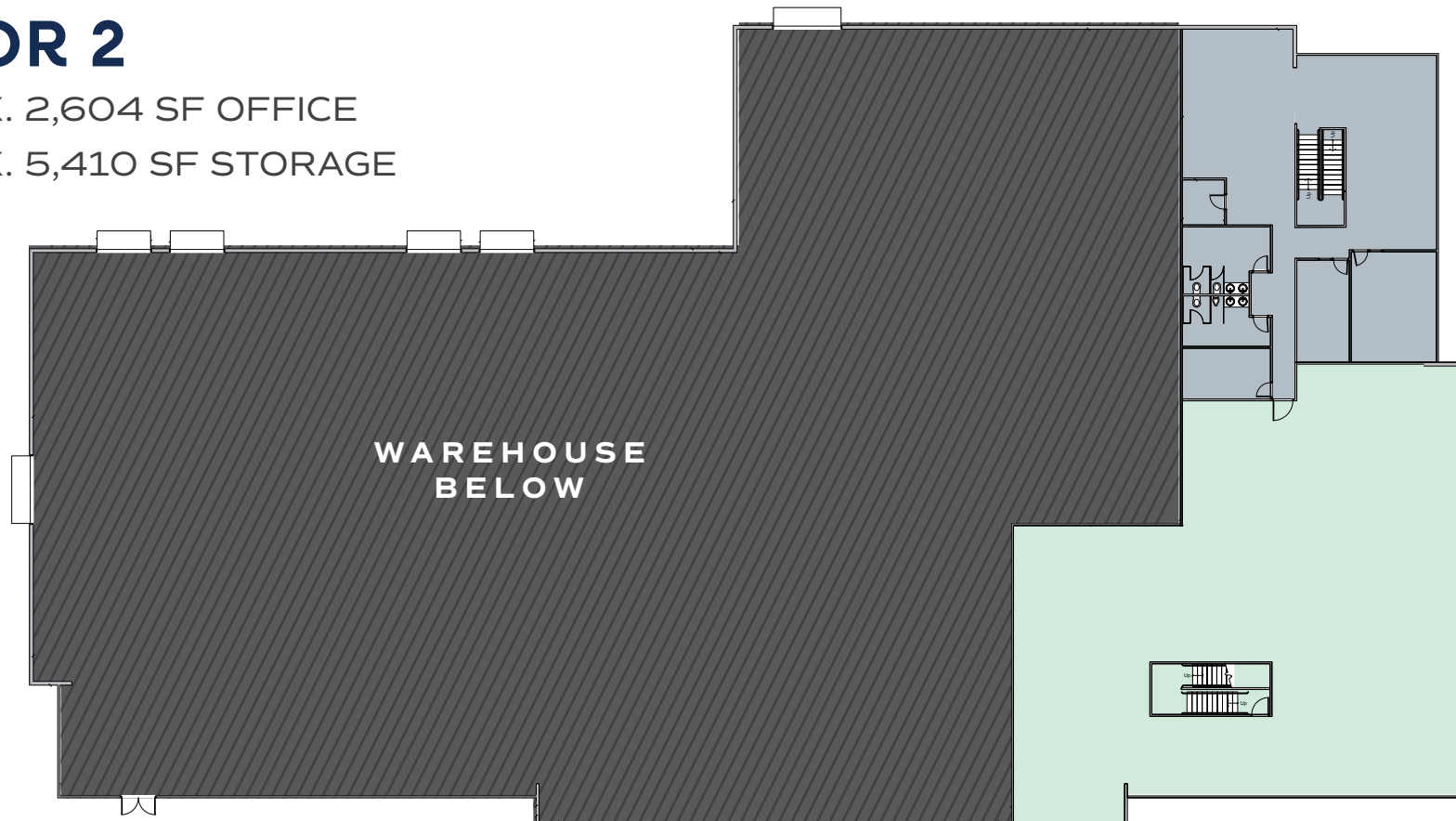
22214 20TH AVE SE | BOTHELL, WASHINGTON

FOR SALE

FLOOR 2

APPROX. 2,604 SF OFFICE

APPROX. 5,410 SF STORAGE



■ STORAGE ■ OFFICE

BRODERICK
· GROUP ·

ERIC MEUSSNER | 425.274.4282
meussner@broderickgroup.com

TYLER SLONE | 425.274.4281
slone@broderickgroup.com

NEARBY TENANTS



Pfizer

SYSTIMMUNE

T-Mobile

AGC Biologics

Microsoft

FUJIFILM SONOSITE
Value from Innovation

ROMAC INDUSTRIES, INC.

Pfizer

ventec LIFE SYSTEMS

Lyell

CPNINE
EASTSIDE INDUSTRIAL

Bristol Myers Squibb

Cepheid

LOCKHEED MARTIN

VerAvanti

Pfizer

CANYON PARK PARK & RIDE

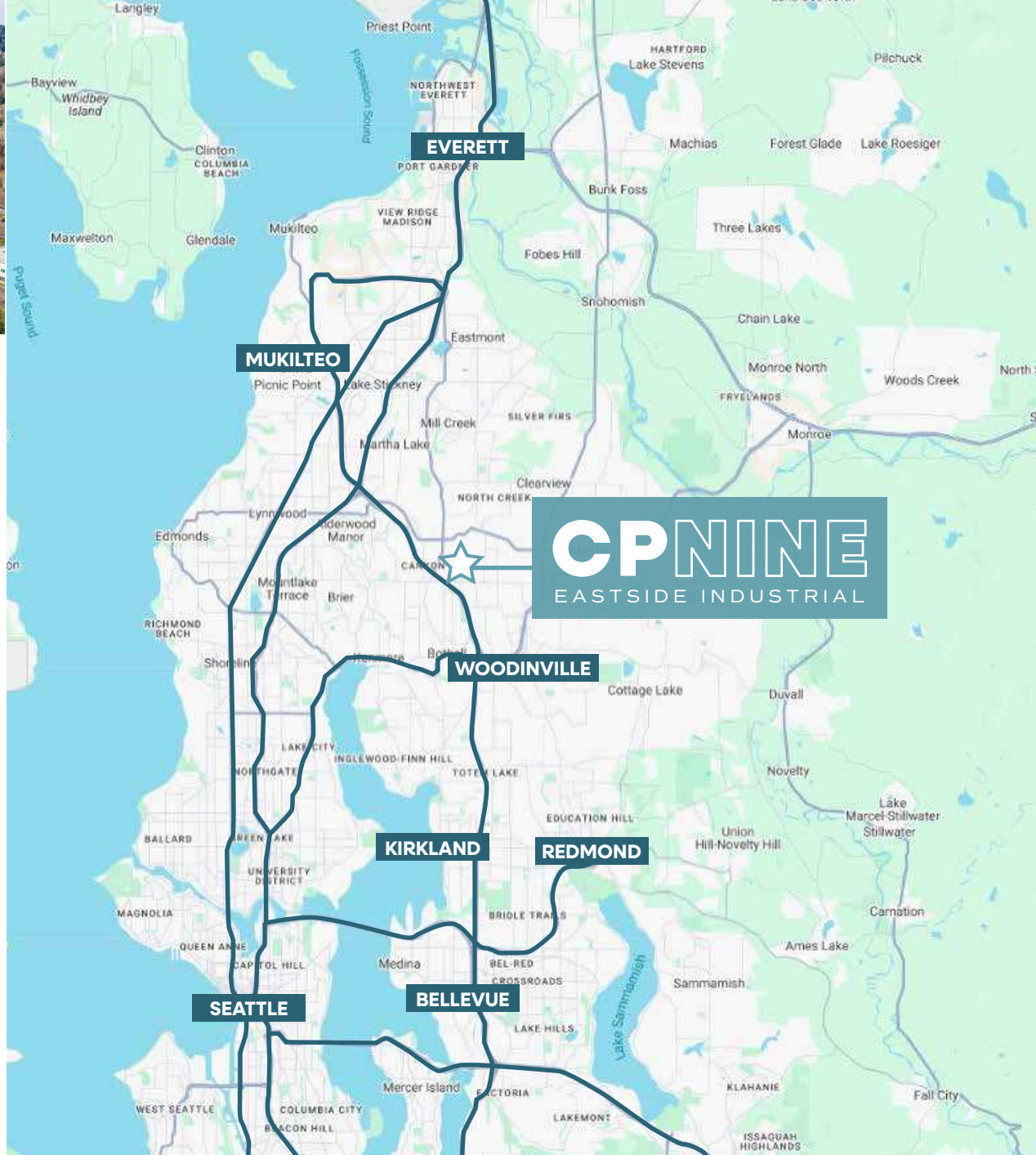


PHILIPS

EXIT 26

BRODERICK GROUP

W
UNIVERSITY of WASHINGTON
BOTHELL



DRIVE TIMES

BELLEVUE

20 MINUTES | 15 MILES

WOODINVILLE

10 MINUTES | 5 MILES

KIRKLAND

14 MINUTES | 10 MILES

REDMOND

18 MINUTES | 13 MILES

EVERETT

18 MINUTES | 15 MILES

SEATTLE

24 MINUTES | 22 MILES

CPNINE
EASTSIDE INDUSTRIAL



ERIC MEUSSNER | 425.274.4282
meussner@broderickgroup.com

TYLER SLONE | 425.274.4281
sloane@broderickgroup.com

The information contained herein has been given to us by the owner or sources that we deem reliable. We have no reason to doubt its accuracy, but we do not guarantee it. Prospective Buyer should carefully verify all information contained herein.