

FOR SALE

Established childcare center and real estate residential corridor.

13125 SE 261st St

Kent, WA 98030

Turnkey childcare facility with established operations, generous outdoor play space, and an ideal position serving the rapidly expanding residential communities of Kent and Covington.

PROPERTY HIGHLIGHTS

- + Active daycare facility for sale along with real estate
- + Licensed for 47 students
- + Convenient pick up and drop off with a large outdoor play area
- + Located in growing residential markets of Kent and Covington
- + The current Montessori location has been successfully operating under the same operator for over 25 years



THE INFORMATION CONTAINED HEREIN HAS BEEN GIVEN TO US BY THE OWNER OF THE PROPERTY OR OTHER SOURCES WE DEEM RELIABLE. WE HAVE NO REASON TO DOUBT ITS ACCURACY, BUT WE DO NOT GUARANTEE IT. ALL INFORMATION SHOULD BE VERIFIED PRIOR TO PURCHASE OR LEASE.

VIRTUAL TOUR



SALE PRICE

\$1,750,000

TOTAL SF

3,512 SF

TOTAL LAND

0.42 AC

ALEX WHEATLEY

Vice President
+1 425 600 4550
awheatley@nai-pp.com

JAKE RYAN

Associate
+1 425 600 4551
jryan@nai-pp.com

Floor Plan

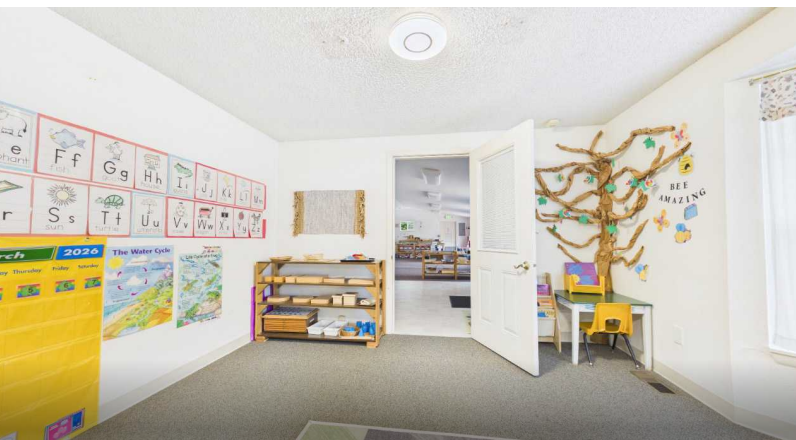


**Measurements are approximate and not to scale. This floor plan is intended for illustration only.*

ALEX WHEATLEY
Vice President
+1 425 600 4550
awheatley@nai-psp.com

JAKE RYAN
Associate
+1 425 600 4551
jryan@nai-psp.com





ALEX WHEATLEY
Vice President
+1 425 600 4550
awheatley@nai-psp.com

JAKE RYAN
Associate
+1 425 600 4551
jryan@nai-psp.com





ALEX WHEATLEY
Vice President
+1 425 600 4550
awheatley@nai-psp.com

JAKE RYAN
Associate
+1 425 600 4551
jryan@nai-psp.com

