



FOR SALE

*9,000 SF Retail/Industrial Building*  
*Sale Price \$1,700,000*

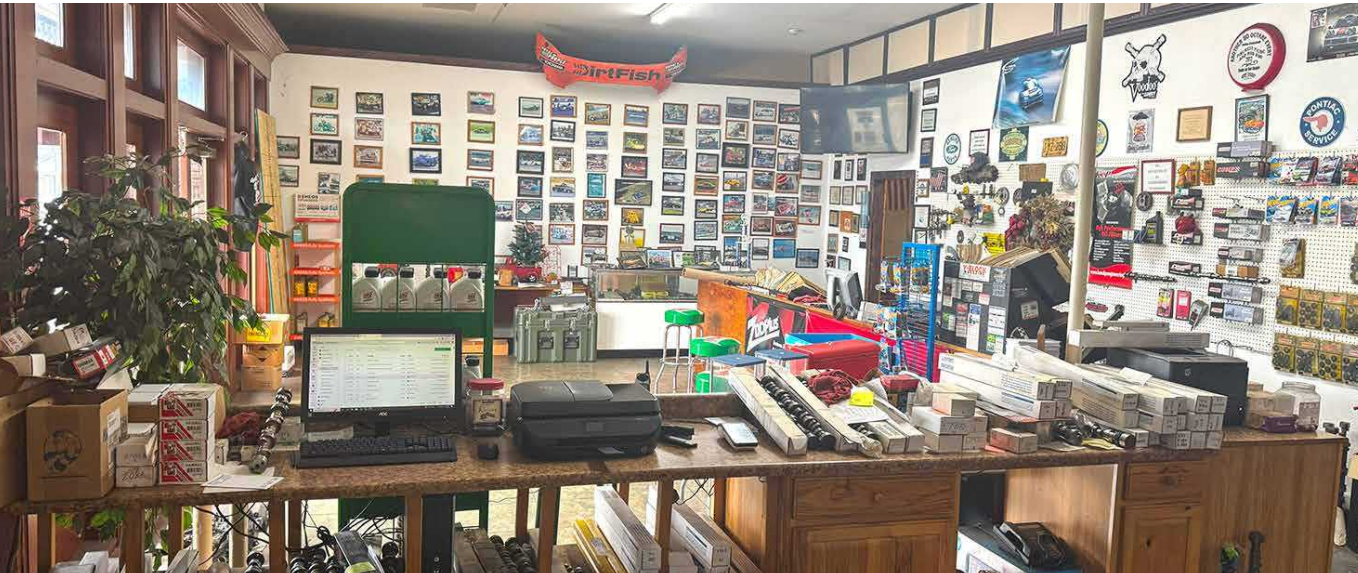
2366 TACOMA AVE S, TACOMA, WA

MATT MCLENNAN, SIOR, CCIM

253.722.1458

[matt.mclennan@kidder.com](mailto:matt.mclennan@kidder.com)

FOR SALE



## PROPERTY HIGHLIGHTS

9,000 SF

Retail and storage space

Secured lot with fenced parking

Street parking

3 phase 120/240 power (buyer to verify)

1 GL door - 10x12

Domed roof: 12' clear at beam,  
22' clear at peak

Zoning: City of Tacoma

Zoning: Downtown Residential

→ ZONING MAP

→ ZONING USE TABLE

→ PROPERTY PICTURES

**\$1,700,000**

SALE PRICE

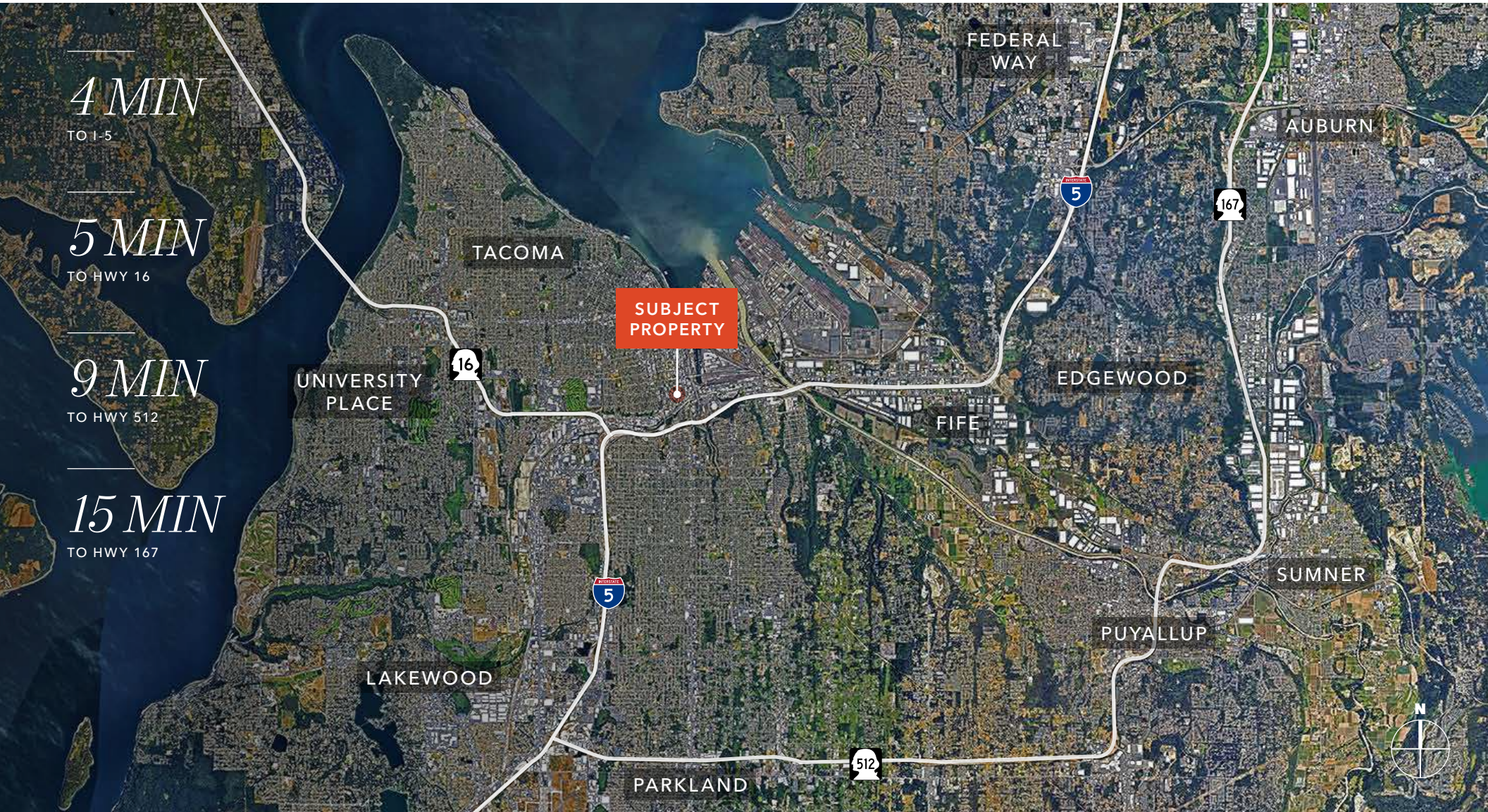
KIDDER.COM

This information supplied herein is from sources we deem reliable. It is provided without any representation, warranty, or guarantee, expressed or implied as to its accuracy. Prospective Buyer or Tenant should conduct an independent investigation and verification of all matters deemed to be material, including, but not limited to, statements of income and expenses. Consult your attorney, accountant, or other professional advisor. All Kidder Mathews designs are the sole property of Kidder Mathews. Branded materials and layouts are not authorized for use by any other firm or person.

**km** Kidder  
Mathews



FOR SALE



[KIDDER.COM](http://KIDDER.COM)

This information supplied herein is from sources we deem reliable. It is provided without any representation, warranty, or guarantee, expressed or implied as to its accuracy. Prospective Buyer or Tenant should conduct an independent investigation and verification of all matters deemed to be material, including, but not limited to, statements of income and expenses. Consult your attorney, accountant, or other professional advisor. All Kidder Mathews designs are the sole property of Kidder Mathews. Branded materials and layouts are not authorized for use by any other firm or person.

