

For Lease or Sale

6905 120th Ave SE, Snohomish, WA

Potential Recycling or Mining Site

7.47 Acres Available



Josh Satterlee | Associate Director | 425-362-1396 | josh.satterlee@nrmk.com

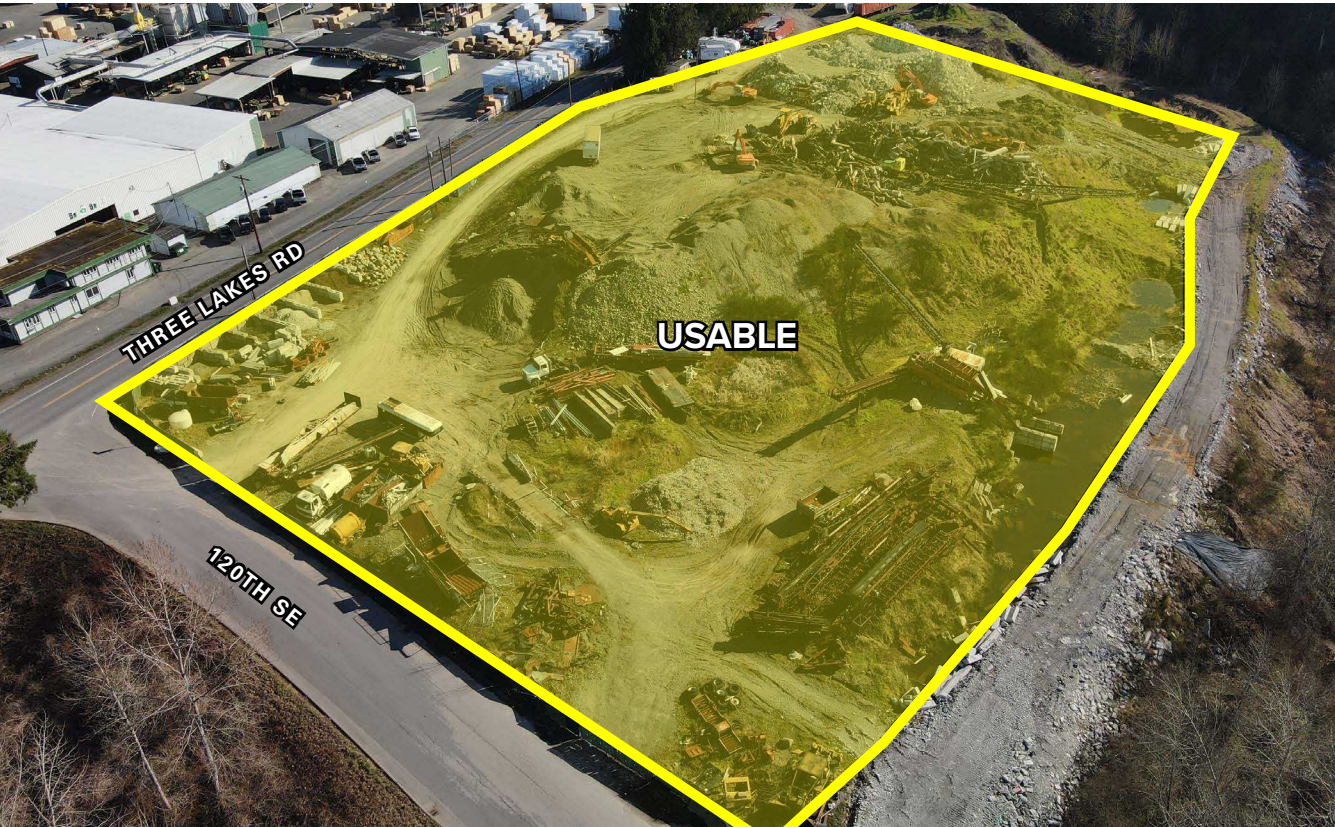
Blake Bentz | Associate Director | 425-362-1391 | blake.bentz@nrmk.com

Spencer Sparks | Associate | 425-372-9939 | spencer.sparks@nrmk.com

NEWMARK

For Lease or Sale

6905 120th Ave SE, Snohomish, WA



PROPERTY DETAILS

- 7.47-Acre Yard Site
- R-5 Zoning
- Ability to Level Site for New User
- Zoning: R5 (click here for more information)
- Owner Will Flatten & Pave Site

Additional Permitted Uses

Department of Natural Resources
Reclamation Permit

- Mining and Reclamation
- Soil and Fill Intake Station

Washington State Department of Ecology
Permit

- Concrete and Asphalt Recycling
- Gravel Washing
- Crushing Operations
- Grinding Operations

NEWMARK

Josh Satterlee | Associate Director | 425-362-1396 | josh.satterlee@nrmk.com

Blake Bentz | Associate Director | 425-362-1391 | blake.bentz@nrmk.com

Spencer Sparks | Associate | 425-372-9939 | spencer.sparks@nrmk.com

For Lease or Sale

6905 120th Ave SE, Snohomish, WA

