

405 MOTORS PROPERTY

*2.36 AC Rare Close-In Yard
Site for Sale in Woodinville*

24115 WOODINVILLE-SNOHOMISH RD
WOODINVILLE, WA 98072

±85,000 SF

PARTIALLY FENCED AND PAVED YARD

±6,187 SF

BUILDING

LI

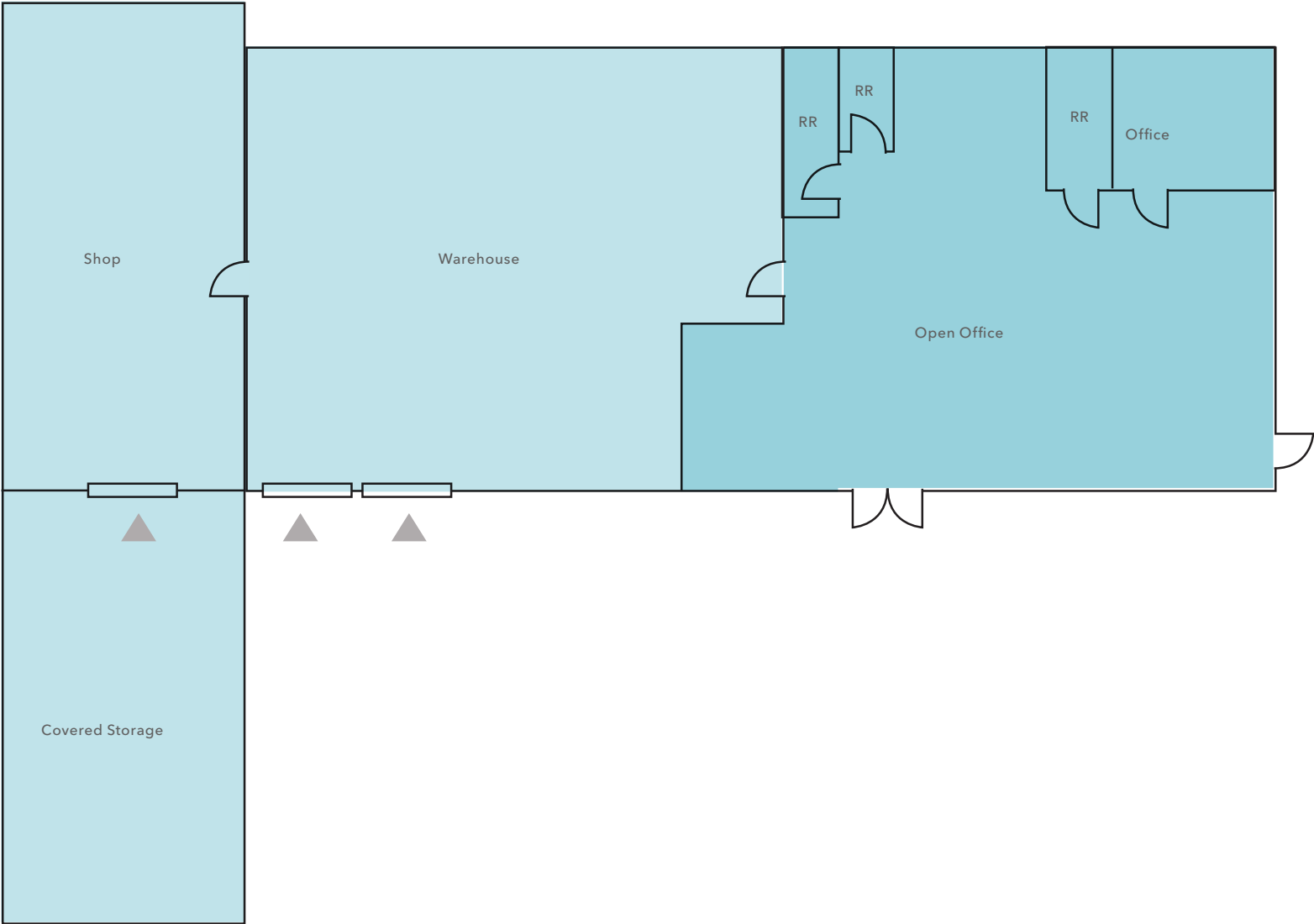
ZONING (SNOHOMISH COUNTY)

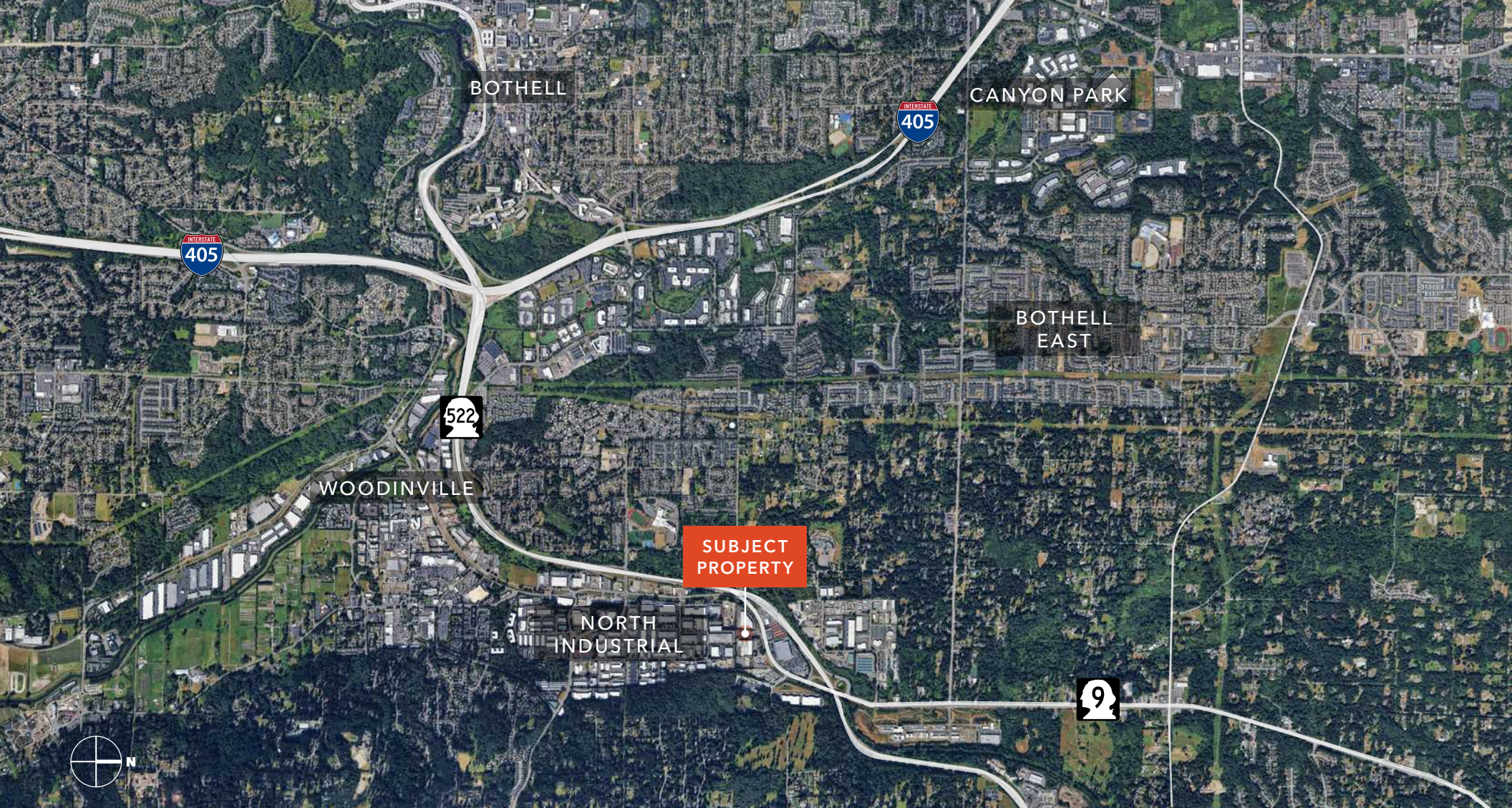
KIDDER.COM



FLOOR PLAN

▲ Grade level loading





For more information, contact

CARTER NICHOLSON
425.241.9886
carter.nicholson@kidder.com

TODD GAUTHIER
425.450.1118
todd.gauthier@kidder.com

JASON BLOOM
425.450.1102
jason.bloom@kidder.com

KIDDER.COM

This information supplied herein is from sources we deem reliable. It is provided without any representation, warranty, or guarantee, expressed or implied as to its accuracy. Prospective Buyer or Tenant should conduct an independent investigation and verification of all matters deemed to be material, including, but not limited to, statements of income and expenses. Consult your attorney, accountant, or other professional advisor. All Kidder Mathews designs are the sole property of Kidder Mathews. Branded materials and layouts are not authorized for use by any other firm or person.

