

FOR SALE

PRIME LOCATION OFFICE BUILDING

510 Plum St SE Olympia, WA 98501



Sale Price

\$1,750,000

OFFERING SUMMARY

Building Size:	10,630 SF
Lot Size:	0.49 Acres
Price / SF:	\$164.63
Zoning:	DB (Downtown Business)

PROPERTY OVERVIEW

Prime location owner-user opportunity for sale in the heart of Downtown Olympia. Offered at \$1,750,000, this well-maintained, two-story office building features 10,630 SF of space on a fully fenced 0.49-acre lot with 32 on-site parking spaces. Perfect for professional or medical office use, the property is ideally suited for growing businesses or established practices seeking expansion. Located in a highly visible and accessible location with direct access to Interstate 5, this building provides outstanding convenience and exposure in a central urban setting.

PROPERTY HIGHLIGHTS

- Excellent visibility and accessibility with convenient access to I-5
- Ample Parking with 32 fully fenced dedicated spaces
- Surrounded by established businesses, services, and amenities
- Elevator

OTHER RESOURCES

[Photo Gallery](#)

Bob Fredrickson, CCIM
(206) 595-7232
bfredrickson@cbcworldwide.com

Dominic Temmel
(253) 273-6474
dtemmel@cbcworldwide.com

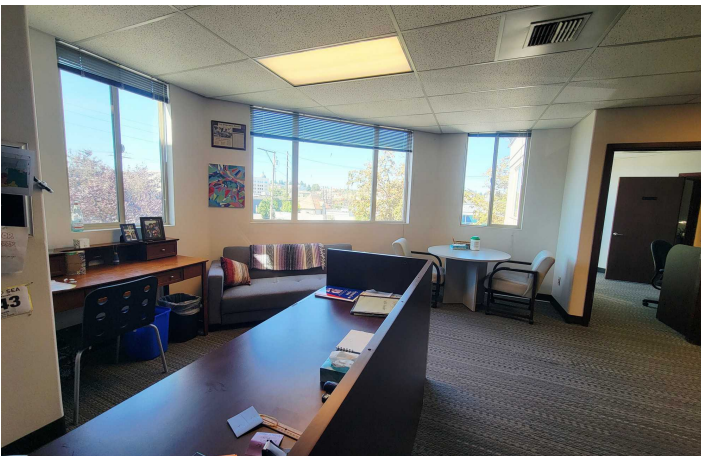


**COLDWELL BANKER
COMMERCIAL**
DANFORTH

FOR SALE

PRIME LOCATION OFFICE BUILDING

510 Plum St SE Olympia, WA 98501



Bob Fredrickson, CCIM
(206) 595-7232
bfredrickson@cbcworldwide.com

Dominic Temmel
(253) 273-6474
dtemmel@cbcworldwide.com

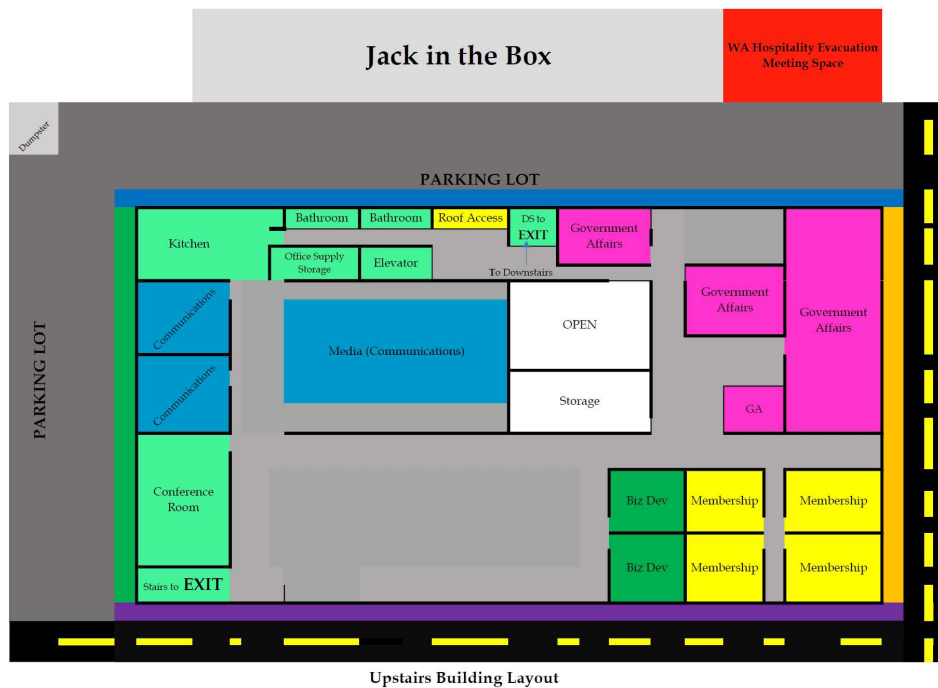
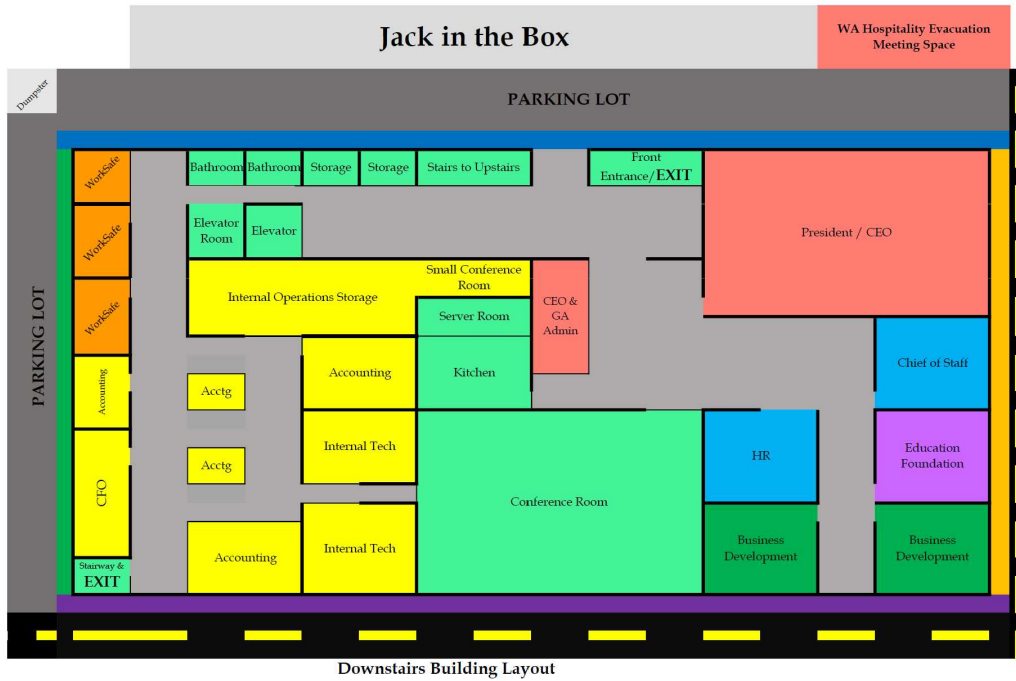


**COLDWELL BANKER
COMMERCIAL**
DANFORTH

FOR SALE

PRIME LOCATION OFFICE BUILDING

510 Plum St SE Olympia, WA 98501



Bob Fredrickson, CCIM
 (206) 595-7232
 bfredrickson@cbcworldwide.com

Dominic Temmel
 (253) 273-6474
 dtemmel@cbcworldwide.com

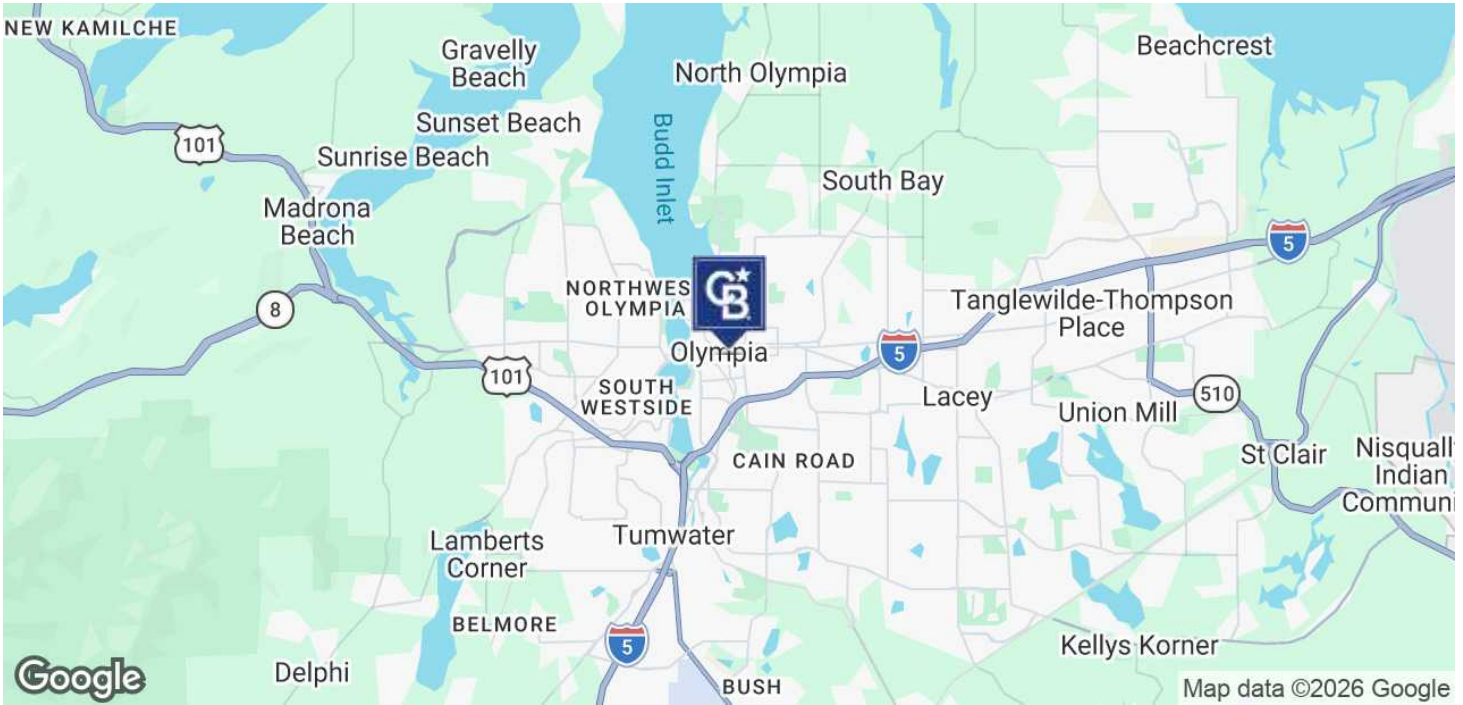


**COLDWELL BANKER
 COMMERCIAL**
 DANFORTH

FOR SALE

PRIME LOCATION OFFICE BUILDING

510 Plum St SE Olympia, WA 98501



Bob Fredrickson, CCIM
(206) 595-7232
bfredrickson@cbcworldwide.com

Dominic Temmel
(253) 273-6474
dtemmel@cbcworldwide.com



**COLDWELL BANKER
COMMERCIAL**
DANFORTH