

FOR SALE

SNOQUALMIE RIDGE PORTFOLIO

*Two Class-A Buildings in
Snoqualmie Ridge Business Park*

34935 & 35030 SE DOUGLAS ST
SNOQUALMIE, WA

OFFERED AS A PORTFOLIO OR INDIVIDUALLY FOR OWNER-USERS

km Kidder
Mathews



A Rare Opportunity to Acquire One or Two Class-A Buildings in Snoqualmie Ridge

Both buildings are located within Snoqualmie Ridge Business Park, situated in one of the fastest growing residential communities in King County. The submarket is largely built out with no new development on the horizon, offering a buyer the ability to acquire meaningful scale well below replacement cost with built-in lease-up upside. The assets are equally well suited for an owner user seeking a premier headquarters location in Snoqualmie Ridge.

	Total	Kendall Lake	Cascade Ridge
PORTFOLIO PRICE	\$16,000,000	\$8,500,000	\$7,500,000
PRICE PER SF	\$165/SF	\$152/SF	\$184/SF
BUILDING AREA	96,808 SF	56,008 SF	40,800 SF
SITE AREA	5.69 AC	3.16 AC	2.53 AC
YEAR BUILT	-	2008	2000
ZONING	MU (Business Park)		
PARKING	4.0/1,000 SF		



SEE MORE
PROPERTY
PHOTOS

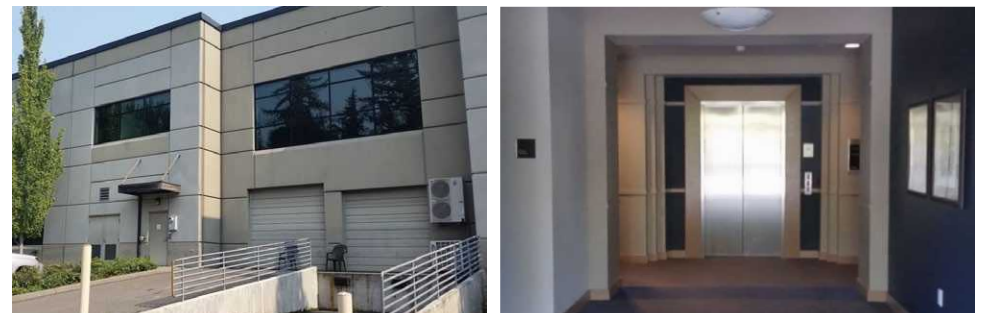
CASCADE RIDGE BUILDING

*Class-A Flex/Office with Unique
Loading Capability*

Built in 2000, the Cascade Ridge Building offers 40,800 SF of Class-A flex/office space on a 2.53-acre site. The second floor presents a turnkey opportunity for one to four tenants, with a highly functional floor plan featuring perimeter offices and open cube area. Grade-level and dock-high loading add flex utility rarely found in suburban office product.

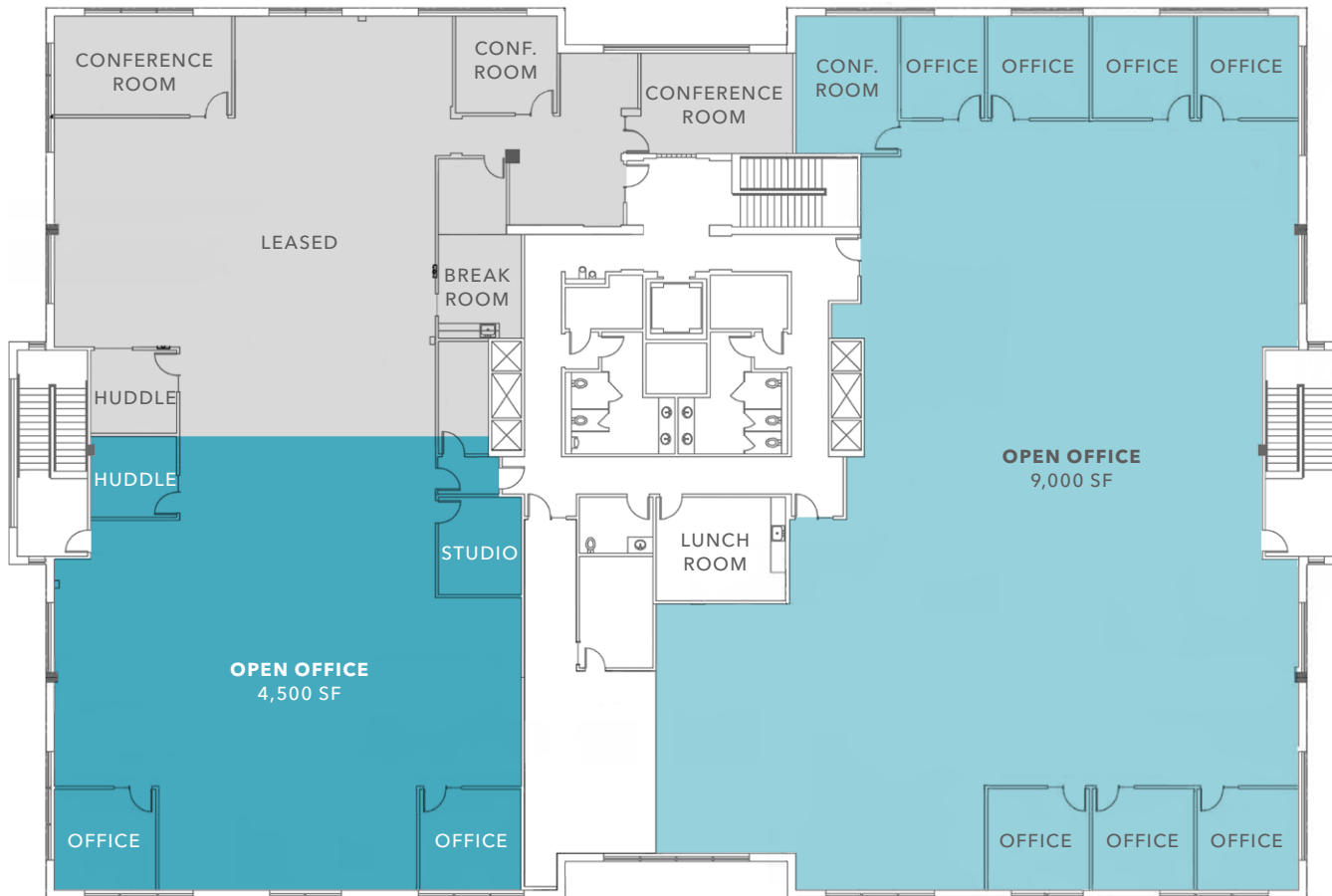
PROPERTY INFORMATION

PRICING	\$7,500,000 (\$184.00/SF)
ADDRESS	34935 SE Douglas St, Snoqualmie, WA
YEAR BUILT	2000
TOTAL SF	40,800 SF
STORIES	2
SITE AREA	2.53 AC
PARCEL NUMBER	785180-0035
ZONING	MU (Business Park)
SLAB TO SLAB	12'
ELEVATOR	Yes
PARKING	4.0/1,000
LOADING	Grade-Level + Dock-High
AVAILABILITY	2nd Floor: 4,500-13,500 SF First floor is fully leased
NOI	Call brokers for first floor lease terms



CASCADE RIDGE BUILDING

SECOND FLOOR



*4,500 SF –
13,500 SF*

AVAILABLE

AVAILABLE

NOW

KENDALL LAKE BUILDING

*Modern Class-A Office
with Maximum Flexibility*

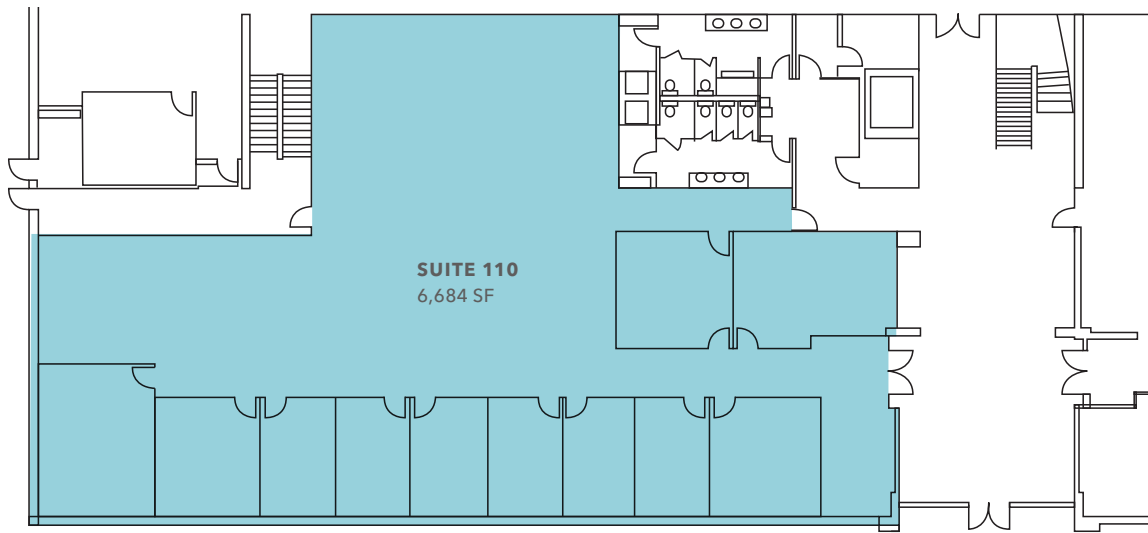
Built in 2008, the Kendall Lake Building is the newer and larger of the two assets at 56,008 SF on a 3.16-acre site. With 9-foot ceilings, an elevator, and six available suite configurations ranging from 2,448 SF to 20,982 SF contiguous, the building offers best-in-class suburban office product for a wide range of tenants or an owner-user.

PROPERTY INFORMATION

PRICE	\$8,500,000 (\$152.00/SF)
ADDRESS	35030 SE Douglas St, Snoqualmie, WA
YEAR BUILT	2008
TOTAL SF	56,008 SF
STORIES	2
SITE AREA	3.16 AC
PARCEL NUMBER	785180-0100
ZONING	MU (Business Park)
SLAB TO SLAB	14'
CEILING HEIGHT	9'
ELEVATOR	Yes
PARKING	4.0/1,000
AVAILABLE	2,448-27,449 SF
NOI	Call brokers for existing lease terms
UPGRADES	Extensive upgrades made to lobby and HVAC



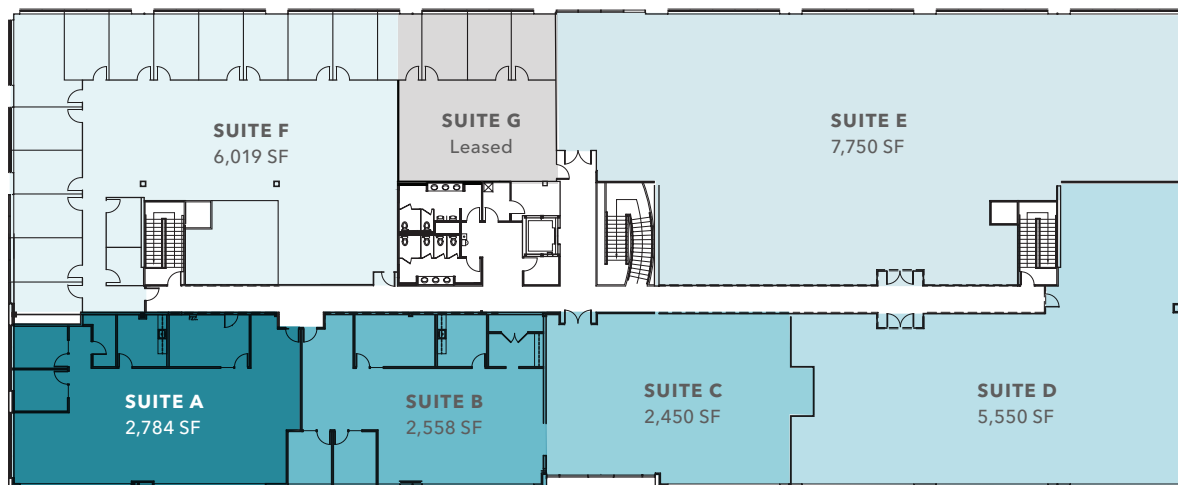
KENDALL LAKE BUILDING



First Floor, Suite 110

AVAILABILITY

SUITE 110 6,684 SF



Second Floor, Suites A-F

AVAILABILITY

SUITE A 2,784 SF

SUITE B 2,558 SF

SUITE C 2,450 SF

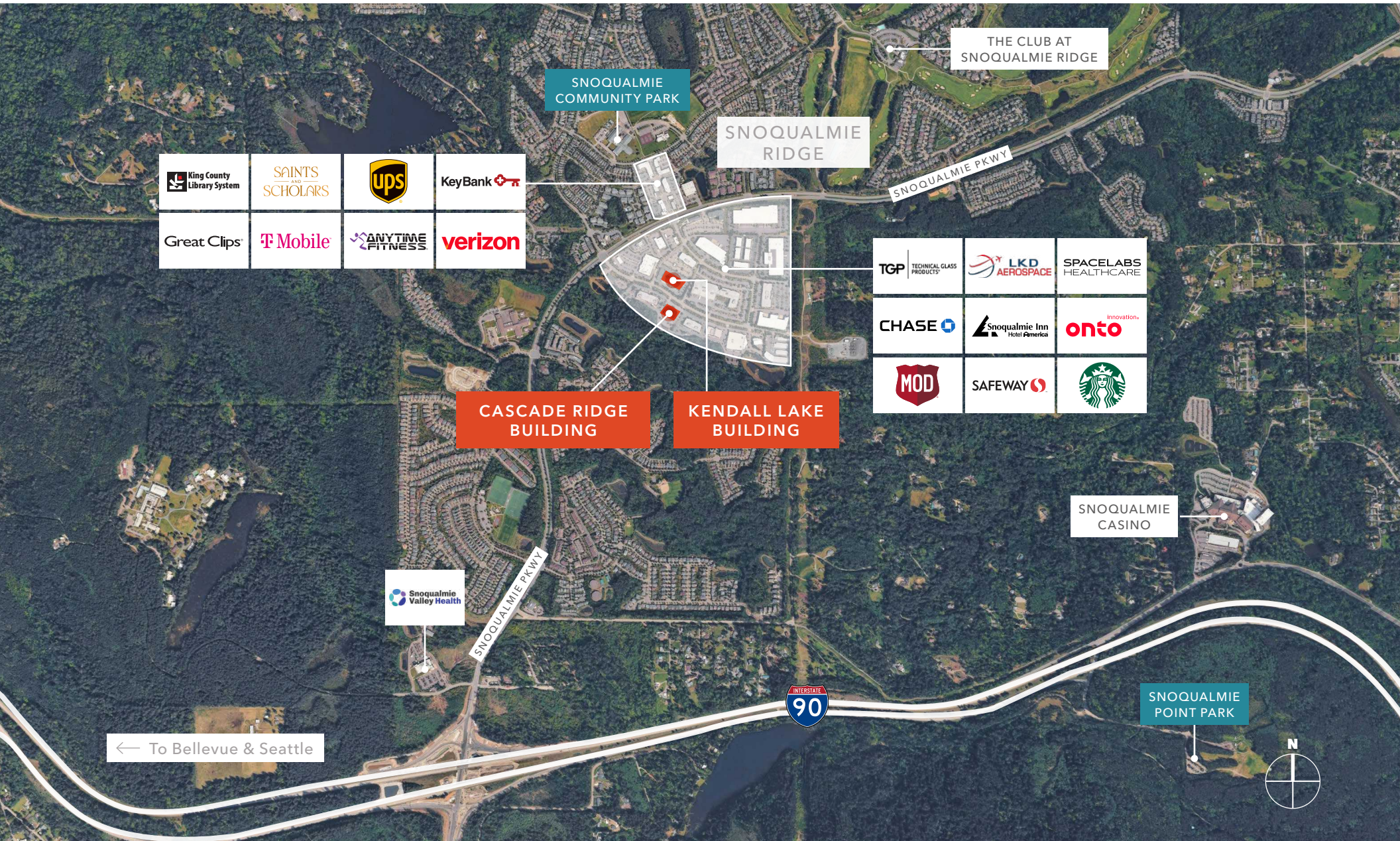
SUITE D 5,550 SF

SUITE E 7,750 SF

SUITE F 6,019 SF

SUITE G Leased

SNOQUALMIE RIDGE PORTFOLIO



HIGHLY- ACCESSIBLE LOCATION

Close proximity to Seattle and Bellevue

Conveniently located off I-90 and new
Highway 18 interchange

12 MIN

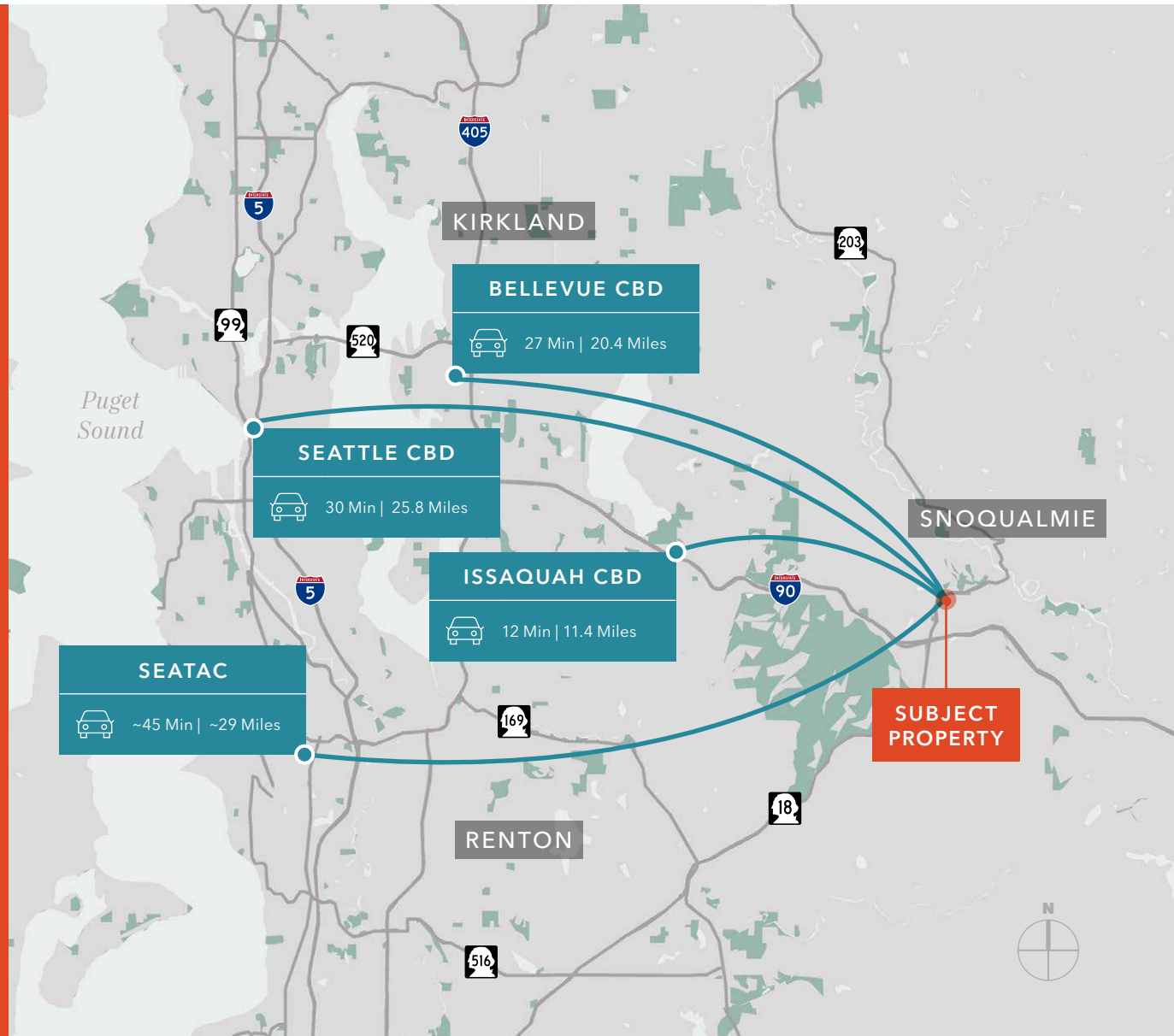
ISSAQUAH CBD

30 MIN

SEATTLE CBD

27 MIN

BELLEVUE CBD



SNOQUALMIE RIDGE PORTFOLIO

Exclusively offered by

ZACH VALL-SPINOSA
Executive Vice President
425.450.1115
zach.vallspinosa@kidder.com

RYAN FOSTER
Associate Vice President
425.450.1124
ryan.foster@kidder.com

COLTON TEGLOVIC
Vice President
425.281.5261
colton.teglovic@kidder.com

KIDDER.COM

This information supplied herein is from sources we deem reliable. It is provided without any representation, warranty, or guarantee, expressed or implied as to its accuracy. Prospective Buyer or Tenant should conduct an independent investigation and verification of all matters deemed to be material, including, but not limited to, statements of income and expenses. Consult your attorney, accountant, or other professional advisor.

