



GOLD BAR INDUSTRIAL PROPERTY

±57,668 SF premier investment opportunity in Gold Bar, WA

41711 STATE ROUTE 2, GOLD BAR, WA 98251



INVESTMENT OFFERING IN GOLD BAR, WA

Kidder Mathews is pleased to present the Gold Bar Industrial Property, a warehouse property strategically located on Hwy 2.

INVESTMENT OFFERING

The City of Gold Bar is a small community of less than 5,000 residents. It was originally settled in the 1880's as support to the mining and logging industries. The town was incorporated in 1910. Today, Gold Bar has a small industrial area, several farming improvements but the majority of the town operates as a bedroom community to the larger cities of Monroe and Everett. Gold Bar is located along the Skykomish River and provides easy access to the natural amenities of the Cascade Mountains. Many properties in Gold Bar contain good quality territorial views of the Cascade Mountain area. Gold Bar's transportation infrastructure is strong and includes good highway and railway access, increasing the desirability of the city for both residential and commercial activities.

MARKETING PROCESS

Ownership will respond to offers as presented but reserves the right to set definite bid date.





PROPERTY DETAILS

ADDRESS	41711 State Route 2, Gold Bar, WA 98251
SALE PRICE	\$5,500,000
AVAILABLE SF	± 57,668
LEASED SF	± 41,468
CAP	8%
PROPERTY TYPE	Industrial
LAND AREA	230,868 SF (5.3 Acres)
YEAR BUILT	1970 to 2010
STORIES	1
PARKING	Non-defined parking stalls
ZONING	General Commercial (GC), City of Gold Bar

\$5.5M
SALE PRICE

±57,688
TOTAL SF

71%
OCCUPANCY

INVESTMENT HIGHLIGHTS

CURRENT USE

The subject's 5.30-acre site is located at 41711 State Route 2 in Gold Bar, Washington. The level site is improved with four steel frame industrial/warehouse buildings, one mobile home used as an office, and a retail building, for a total rentable building area of 57,668 SF. The retail building of 3,600 SF is occupied by two tenants. The industrial space is leased or subleased by four additional tenants. The owner occupies a portion of the industrial space to store and refurbish commercial refrigeration equipment and mobile home for office space. The improvements were constructed at various times and range from the 1970s to 2011, with upgrades and improvements still ongoing. Most of the subject improvements were constructed since 1999.

HIGHEST AND BEST USE

The highest and best use of the subject property "As Improved" is for continued use as a facility for cannabis processing and retail sales, along with industrial/warehouse and office.



SEATTLE METRO AREA AT A GLANCE

Seattle is the commercial, financial, and cultural center of the Pacific Northwest.

The Seattle Metropolitan Area is composed of three primary counties: King County, which is the largest and includes the City of Seattle; Snohomish County, which is immediately to the North and has Everett as its principal city; and Pierce County, immediately to the South, with Tacoma as its principal city. As of April 1, 2021, these three counties have a combined population of 4,054,800. This is an increase of 62,800 people, between April 1st, 2020 and April 1st, 2021.

The region has acquired a reputation as a desirable place to live and a good place to conduct business, particularly in recent years. Seattle is considered a global city, due to its ties with Asia and world trade, and has a tradition of innovation, stewardship, and reinvention. With a large pool of talented, educated workers and high national ranking as one of the most educated cities in the nation, Seattle has become a major center of forward-looking sectors such as software, aerospace, and biotech.

4,054,800

SEATTLE METRO AREA
COMBINED POPULATION

62,800

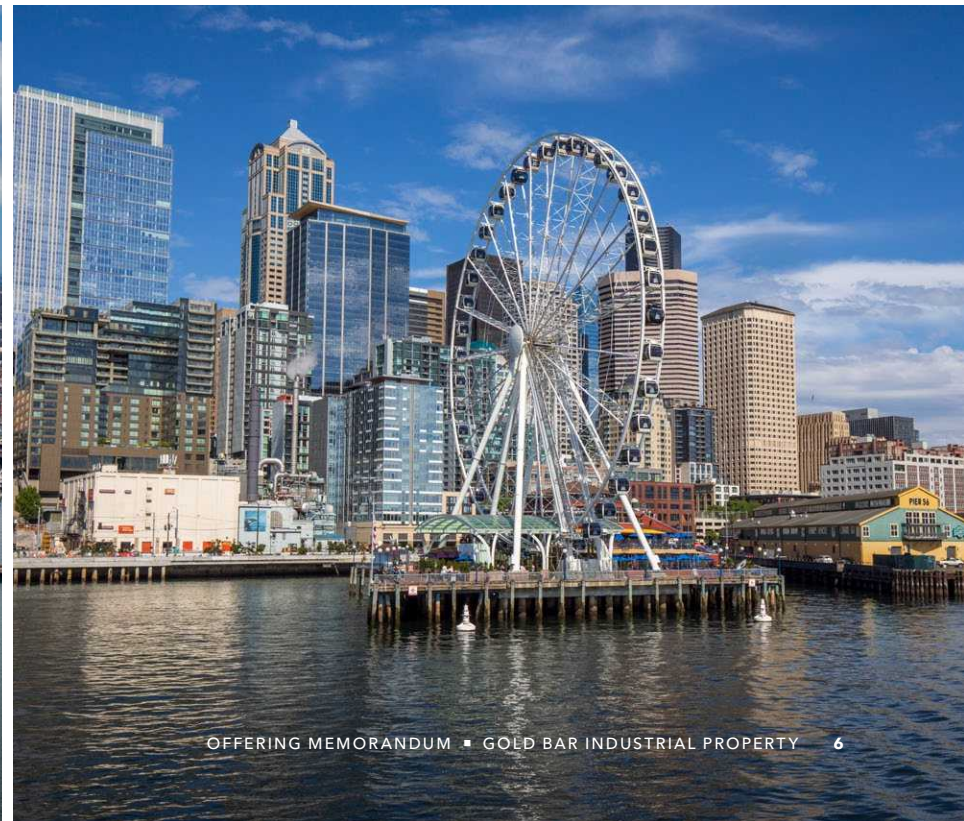
POPULATION INCREASE
2020 - 2021

WATERFRONT SEATTLE

Waterfront Seattle is rebuilding Alaskan Way between S King and Pike Streets, and has built a new street, Elliott Way, between Alaskan Way and Bell St.

The new surface street spans a total of 17 blocks from Pioneer Square to Belltown, with two lanes of traffic in either direction for the majority of the street. This street has the honorary name Dzidzilalich. Intersections and sidewalks have been carefully designed to support pedestrian accessibility. The new park promenade and two-way protected bike path will run along the west side of Alaskan Way. The southern section will include dedicated lanes for transit in and out of downtown, as well as lanes for ferry queuing onto

Colman Dock. Seneca St will be rebuilt between Western Ave and Alaskan Way with new parking, landscaping, and lighting. This project will add connections to park spaces, restaurants, stores and neighborhoods, raised street crossings and widened sidewalks for pedestrians, more than 500 new street trees, extensive ground covers and green stormwater infrastructure to manage stormwater runoff on-site, and extensive pedestrian and roadway lighting.



RENT ROLL

Tenant	Building	NRSF	LEASE TERM		RENTAL RATES		Notes
			Lease Commencement	Lease Expiration	Base Rent	NNN/Month	
Diamond Harvest	A1	2,040	March 1st 2026	Feb 28th 2031	\$3,000	\$137	Two 5 Year Options
42 Squared	A2	1,560	Jan 1st 2023	April 30th 2027	\$2,400	\$111	One 2 Year Option
Hydro Point	B	15,000	Aug 1st 2021	July 31st 2031	\$17,364	\$1,058	Two 5 Year Options
3W Horticulture	C	6,000	July 1st 2022	June 30th 2032	\$6,337	\$385	One 5 Year Option
Diamond Harvest	D	11,868	March 1st 2026	Feb 28th 2031	\$11,868	\$938	Two 5 Year Options
Vacant - Available	E	16,200	-	-	-	-	-
Arctic Transportation (Dome Tent)	F	5,000	Jun 1st 2025	May 31st 2026	\$2,334	\$0	No
Total		57,668			\$43,303	\$2,629	

*Tenant pays for their own Water, Garbage and Utilities



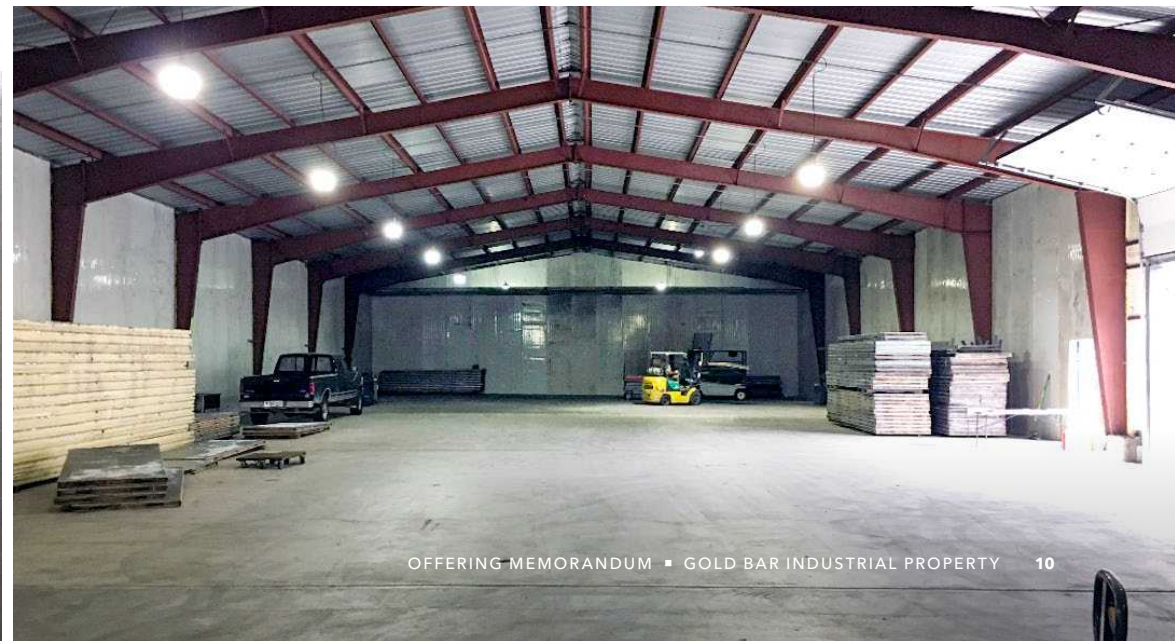
PROPERTY OVERVIEW



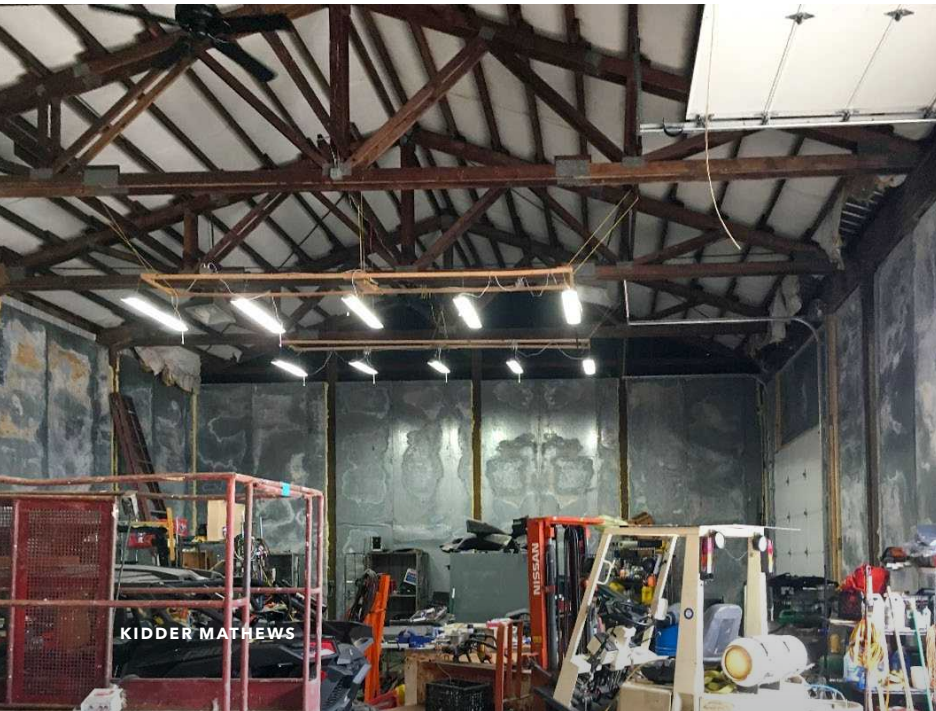
PROPERTY OVERVIEW



PROPERTY OVERVIEW



PROPERTY OVERVIEW



Exclusively listed by

SUN W. CHOY

Vice President

425.450.1128

sun.choy@kidder.com

TIM CHIN

First Vice President

425.450.1119

tim.chin@kidder.com

KIDDER.COM



The information contained in the following Marketing Brochure is proprietary and strictly confidential. It is intended to be reviewed only by the party receiving it from Kidder Mathews and should not be made available to any other person or entity without the written consent of Kidder Mathews.

This Marketing Brochure has been prepared to provide summary, unverified information to prospective purchasers, and to establish only a preliminary level of interest in the subject property. The information contained herein is not a substitute for a thorough due diligence investigation. Kidder Mathews has not made any investigation, and makes no warranty or representation, with respect to the income or expenses for the subject property, the future projected financial performance of the property, the size and square footage of the property and improvements, the presence or absence of contaminating substances, PCB's or asbestos, the compliance with State and Federal regulations, the physical condition of the improvements thereon, or the financial condition or business prospects of any tenant, or any tenant's plans or intentions to continue its occupancy of the subject property. The information contained in this Marketing Brochure has been obtained from sources we believe to be reliable; however, Kidder Mathews has not verified, and will not verify, any of the information contained herein, nor has Kidder Mathews conducted any investigation regarding these matters and makes no warranty or representation whatsoever regarding the accuracy or completeness of the information provided. All potential buyers must take appropriate measures to verify all of the information set forth herein.

This information has been secured from sources we believe to be reliable. We make no representations or warranties, expressed or implied, as to the accuracy of the information. References to square footage or age are approximate. Recipient of this report must verify the information and bears all risk for any inaccuracies.