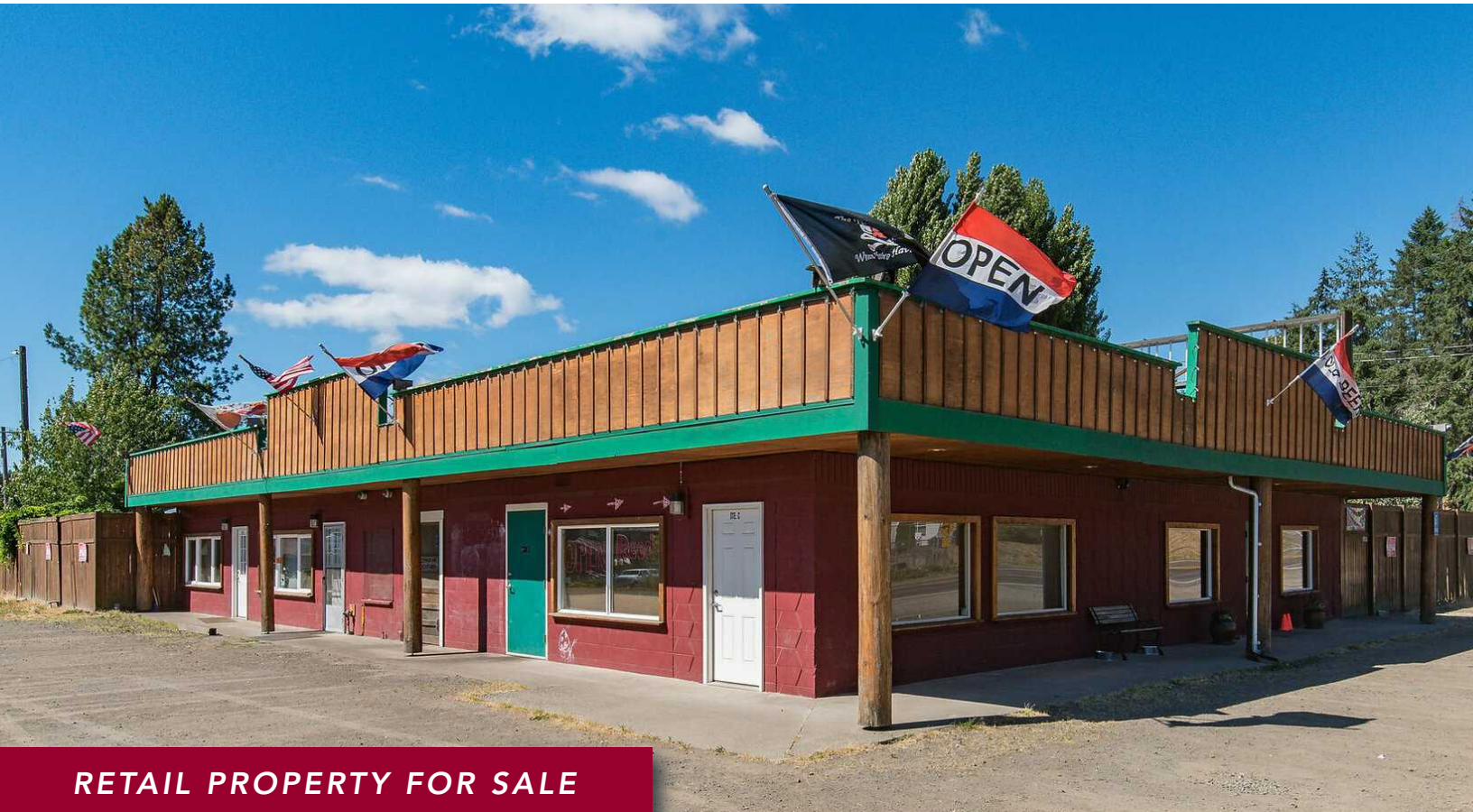


PRIME RETAIL CORNER PROPERTY IN KEY CENTER

15610 Olson Drive Northwest, Lakebay, WA 98349



COMMERCIAL REAL ESTATE SERVICES



RETAIL PROPERTY FOR SALE

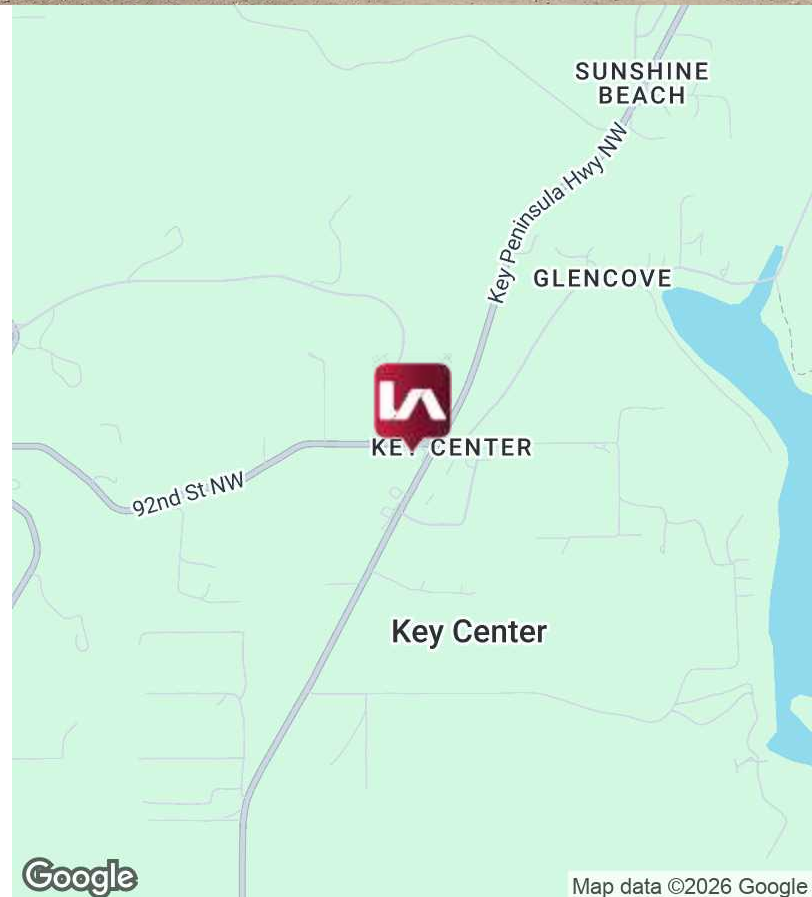
\$1,080,000 SALE PRICE

LISTING INFORMATION

ADDRESS:	15610 Olson Drive Northwest, Lakebay, WA
AVAILABLE SF:	3,926 SF
BUILDING SIZE:	3,926 SF
LOT SIZE:	40,037
SALE PRICE:	\$1,080,000

COMMENTS

Prime Retail Building on Key Peninsula - Ready for owner occupant or investment. Formerly a restaurant/bar, this location can be used for a variety of commercial uses.



PRIME RETAIL CORNER PROPERTY IN KEY CENTER

15610 Olson Drive Northwest, Lakebay, WA 98349



COMMERCIAL REAL ESTATE SERVICES

PHOTOS



CONTACT

Rachel Corp

253.238.2842

rcorp@lee-associates.com

We obtained the information above from sources we believe to be reliable. However, we have not verified its accuracy and make no guarantee, warranty or representation about it. It is submitted subject to the possibility of errors, omissions, change of price, rental or other conditions, prior sale, lease or financing, or withdrawal without notice. We include projections, opinions, assumptions or estimates for example only, and they may not represent current or future performance of the property. You and your tax and legal advisors should conduct your own investigation of the property and transaction.

PRIME RETAIL CORNER PROPERTY IN KEY CENTER

15610 Olson Drive Northwest, Lakebay, WA 98349



COMMERCIAL REAL ESTATE SERVICES

PHOTOS



CONTACT

Rachel Corp

253.238.2842

rcorp@lee-associates.com

We obtained the information above from sources we believe to be reliable. However, we have not verified its accuracy and make no guarantee, warranty or representation about it. It is submitted subject to the possibility of errors, omissions, change of price, rental or other conditions, prior sale, lease or financing, or withdrawal without notice. We include projections, opinions, assumptions or estimates for example only, and they may not represent current or future performance of the property. You and your tax and legal advisors should conduct your own investigation of the property and transaction.

PRIME RETAIL CORNER PROPERTY IN KEY CENTER

15610 Olson Drive Northwest, Lakebay, WA 98349



COMMERCIAL REAL ESTATE SERVICES

PHOTOS



CONTACT

Rachel Corp

253.238.2842

rcorp@lee-associates.com

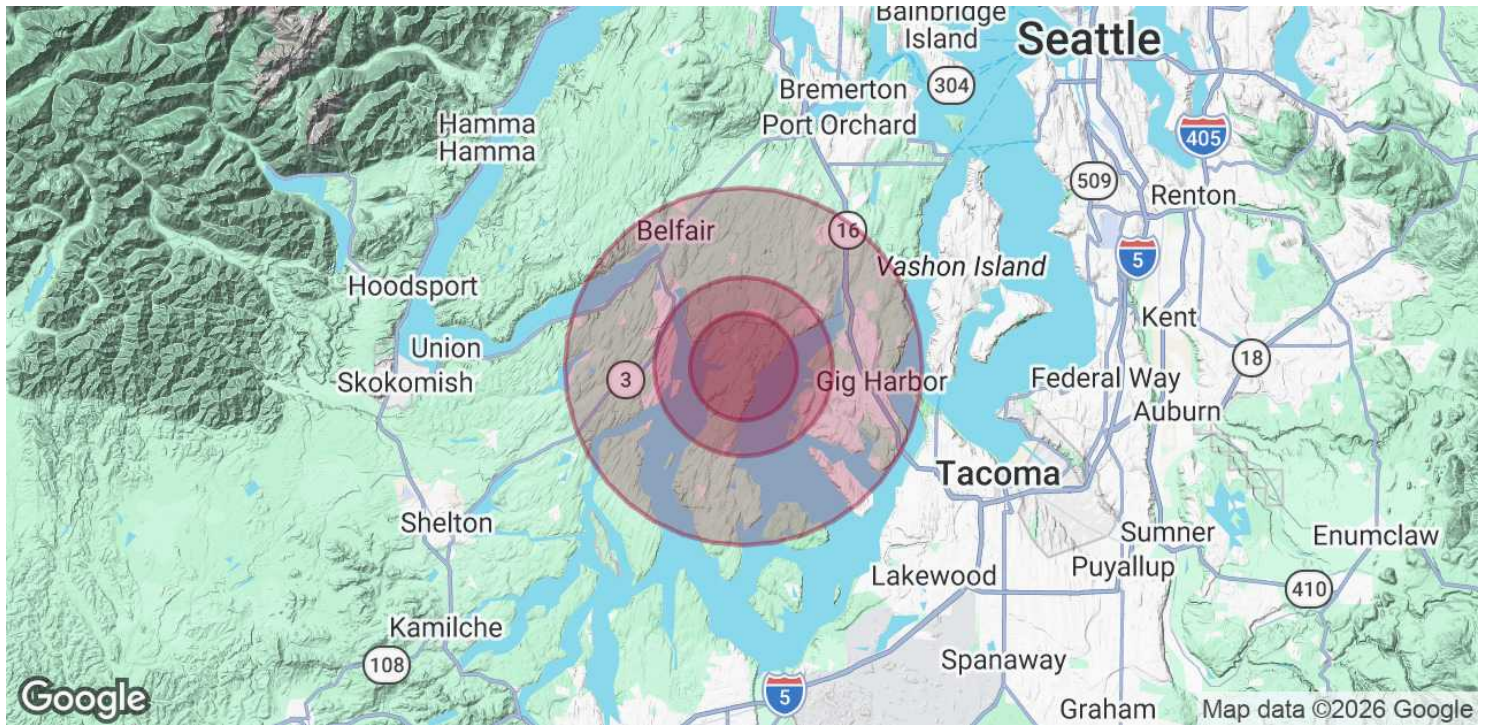
We obtained the information above from sources we believe to be reliable. However, we have not verified its accuracy and make no guarantee, warranty or representation about it. It is submitted subject to the possibility of errors, omissions, change of price, rental or other conditions, prior sale, lease or financing, or withdrawal without notice. We include projections, opinions, assumptions or estimates for example only, and they may not represent current or future performance of the property. You and your tax and legal advisors should conduct your own investigation of the property and transaction.

PRIME RETAIL CORNER PROPERTY IN KEY CENTER

15610 Olson Drive Northwest, Lakebay, WA 98349



COMMERCIAL REAL ESTATE SERVICES



POPULATION

3 MILES

5 MILES

10 MILES

TOTAL POPULATION	4,755	17,908	99,403
AVERAGE AGE	45.2	45.7	45.5
AVERAGE AGE (MALE)	44.9	44.2	45.3
AVERAGE AGE (FEMALE)	45.3	47.6	45.7

HOUSEHOLDS & INCOME

3 MILES

5 MILES

10 MILES

TOTAL HOUSEHOLDS	1,867	6,917	38,353
# OF PERSONS PER HH	2.5	2.6	2.6
AVERAGE HH INCOME	\$121,551	\$150,168	\$147,168
AVERAGE HOUSE VALUE	\$533,610	\$611,344	\$650,900

2023 American Community Survey (ACS)

CONTACT

Rachel Corp

253.238.2842

rcorp@lee-associates.com

We obtained the information above from sources we believe to be reliable. However, we have not verified its accuracy and make no guarantee, warranty or representation about it. It is submitted subject to the possibility of errors, omissions, change of price, rental or other conditions, prior sale, lease or financing, or withdrawal without notice. We include projections, opinions, assumptions or estimates for example only, and they may not represent current or future performance of the property. You and your tax and legal advisors should conduct your own investigation of the property and transaction.