

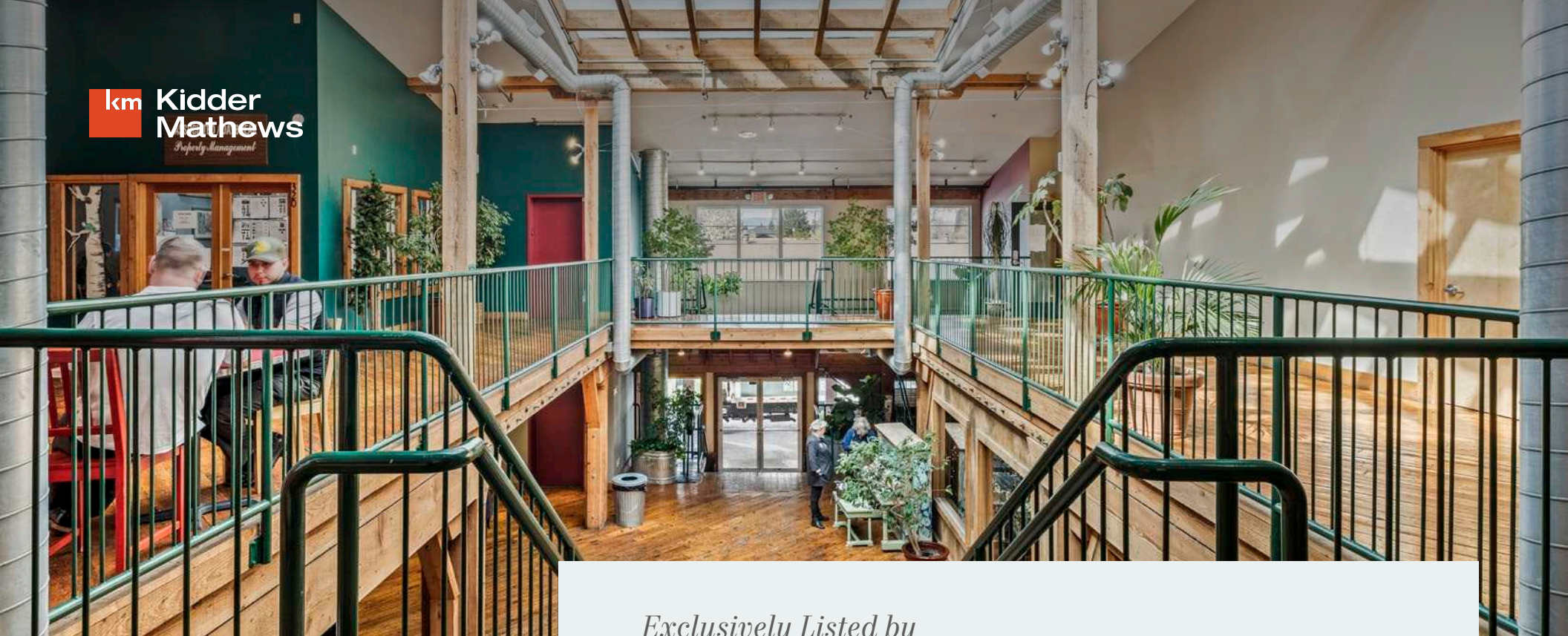
# GLENWOOD SQUARE

5110 TIETON DRIVE, YAKIMA, WA 98908



→ VIRTUAL TOUR

**km** Kidder Mathews



# TABLE OF CONTENTS

**01** INVESTMENT SUMMARY

**02** LOCATION OVERVIEW

## *Exclusively Listed by*

**DAVID GELLNER**  
Executive Vice President  
206.747.4338  
david.gellner@kidder.com

**PARKER KSIDAKIS**  
First Vice President  
206.708.9420  
parker.ksidakis@kidder.com

**MICHELLE PLAFCAN**  
Client Service Coordinator  
503.221.2264  
michelle.plafcan@kidder.com

[KIDDER.COM](http://KIDDER.COM)

The information contained in the following Marketing Brochure is proprietary and strictly confidential. It is intended to be reviewed only by the party receiving it from Kidder Mathews and should not be made available to any other person or entity without the written consent of Kidder Mathews.

This Marketing Brochure has been prepared to provide summary, unverified information to prospective purchasers, and to establish only a preliminary level of interest in the subject property. The information contained herein is not a substitute for a thorough due diligence investigation. Kidder Mathews has not made any investigation, and makes no warranty or representation, with respect to the income or expenses for the subject property, the future projected financial performance of the property, the size and square footage of the property and improvements, the presence or absence of contaminating substances, PCB's or asbestos, the compliance with State and Federal regulations, the physical condition of the improvements thereon, or the financial condition or business prospects of any tenant, or any tenant's plans or intentions to continue its occupancy of the subject property. The information contained in this Marketing Brochure has been obtained from sources we believe to be reliable; however, Kidder Mathews has not verified, and will not verify, any of the information contained herein, nor has Kidder Mathews conducted any investigation regarding these matters and makes no warranty or representation whatsoever regarding the accuracy or completeness of the information provided. All potential buyers must take appropriate measures to verify all of the information set forth herein.

This information has been secured from sources we believe to be reliable. We make no representations or warranties, expressed or implied, as to the accuracy of the information. References to square footage or age are approximate. Recipient of this report must verify the information and bears all risk for any inaccuracies.



# INVESTMENT SUMMARY

## INVESTMENT SUMMARY

*Kidder Mathews is pleased to present the opportunity to acquire Glenwood Square, an irreplaceable and historic multi-tenant neighborhood shopping center in Yakima's affluent West Valley submarket.*

Glenwood Square is anchored by 3 of Yakima's most popular and long-time established restaurants, offering stable and differentiated rental income at an attractive 8.72% current CAP Rate, generating an immediate 11% cash on cash return with traditional financing.

Located within the affluent West Valley submarket—Yakima's highest-income submarket—The property benefits from strong surrounding demographics, with a county population exceeding 250,000 residents and approximately 85,000 households.

The building itself offers a distinctive architectural character, featuring exposed rustic beams and heavy hardwood flooring that create an inviting and authentic environment well-suited for a variety of retail and service-oriented uses.

ADDRESS	5110 Tieton Drive, Yakima, WA 98908
OCCUPANCY	87%
CASH ON CASH RETURN	11%
RENTABLE SF	52,275
PRICE PER SF	\$77
LAND AREA	2.39 Acres
PARKING SPACES	213



## INVESTMENT HIGHLIGHTS

### PROVEN MIXED-USE ASSET WITH LONG-TERM OPERATING HISTORY

Glenwood Square offers over 20 years of successful operations in the heart of Yakima, demonstrating stability and long-term tenant demand.

### STRONG IN-PLACE TENANCY WITH DESTINATION DRAW

The property is anchored by well-established, locally recognized tenants that generate consistent daily traffic and contribute to a vibrant, experiential environment.

### VALUE-ADD OPPORTUNITY THROUGH LEASE-UP

Existing vacancy provides an opportunity to increase cash flow and improve overall returns as remaining space is leased at market rates.

### RECENT CAPITAL IMPROVEMENTS

Ownership has completed recent upgrades to the property, a roof replacement in 2016, interior fire sprinklers and suppression, enhancing overall condition and reducing near-term capital expenditure requirements for a new investor.

### ADAPTIVE REUSE WITH UNIQUE ARCHITECTURAL CHARACTER

Originally an apple warehouse, the building features exposed beams and hardwood floors, creating a distinctive setting that appeals to retail, restaurant, and creative office tenants.

### ADDITIONAL REVENUE POTENTIAL

Second-floor theater/media space offers upside through events, entertainment programming, or alternative uses.

### PRIME WEST VALLEY LOCATION

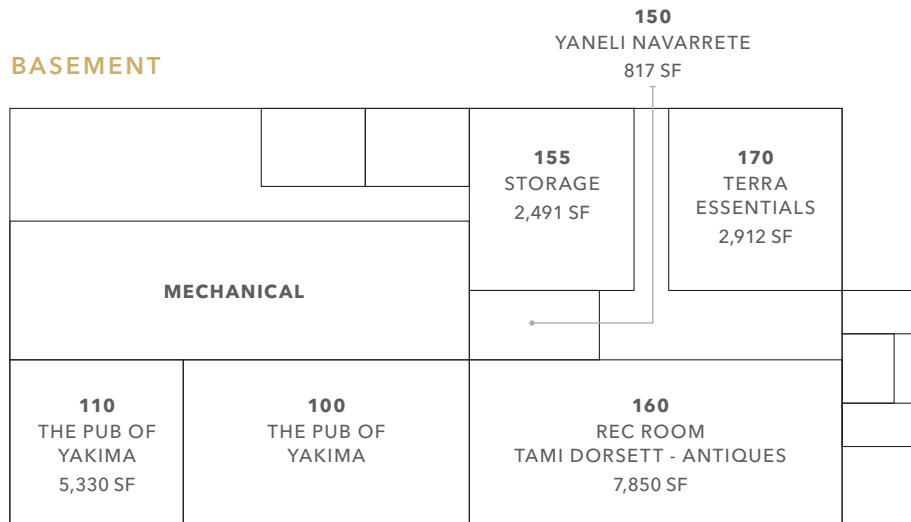
Situated in one of Yakima's most affluent submarkets, with strong surrounding demographics and convenient access from across the city.

### AMPLE ON-SITE PARKING

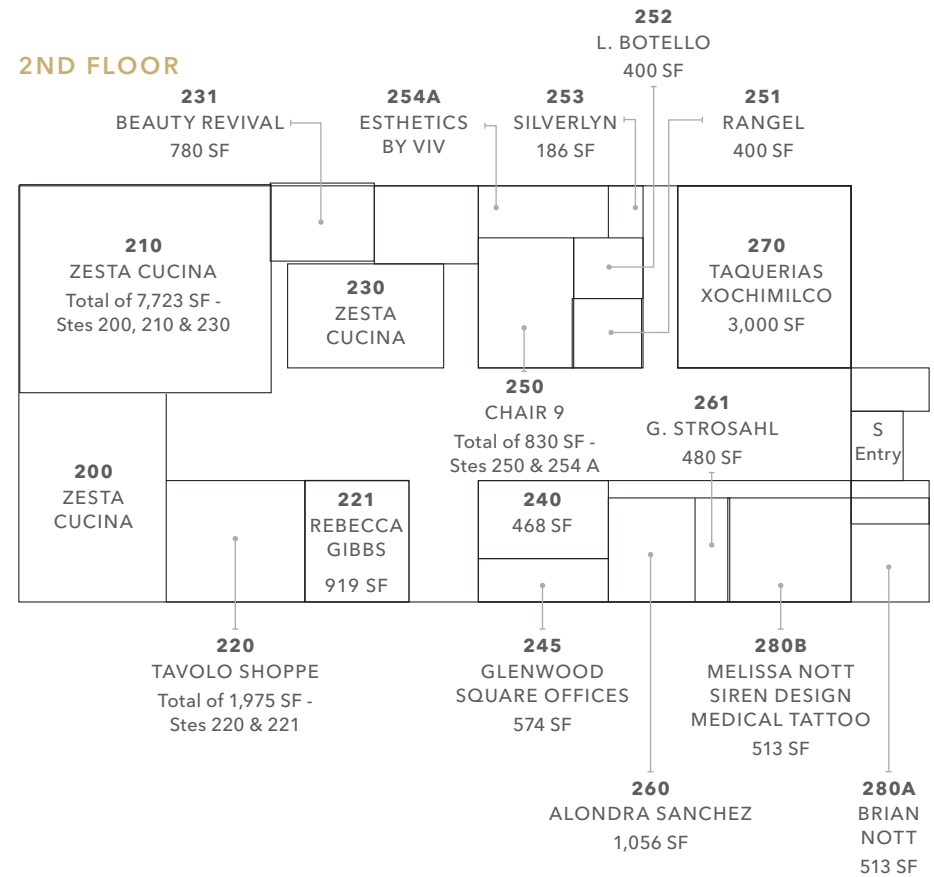
The property includes 213 lighted parking stalls, supporting a wide range of commercial uses and high customer volume.

# SITE PLANS

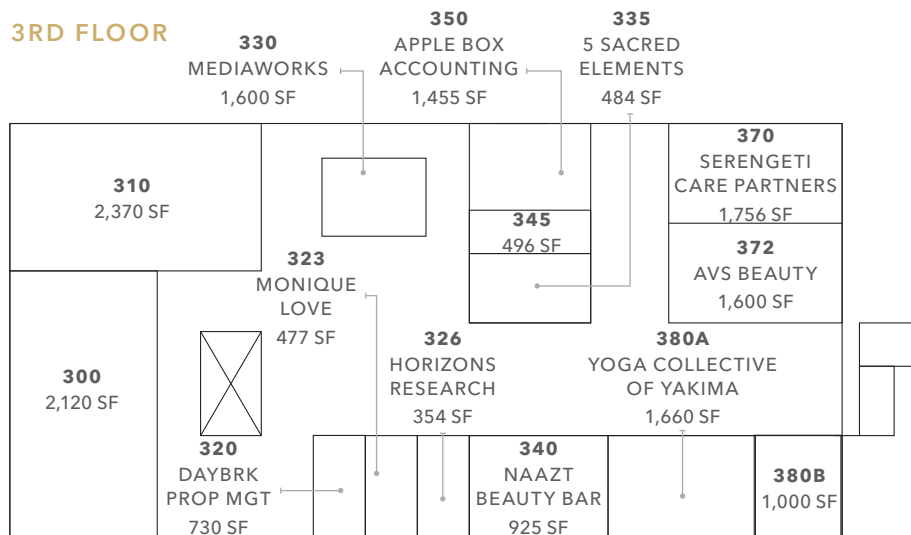
## BASEMENT



## 2ND FLOOR



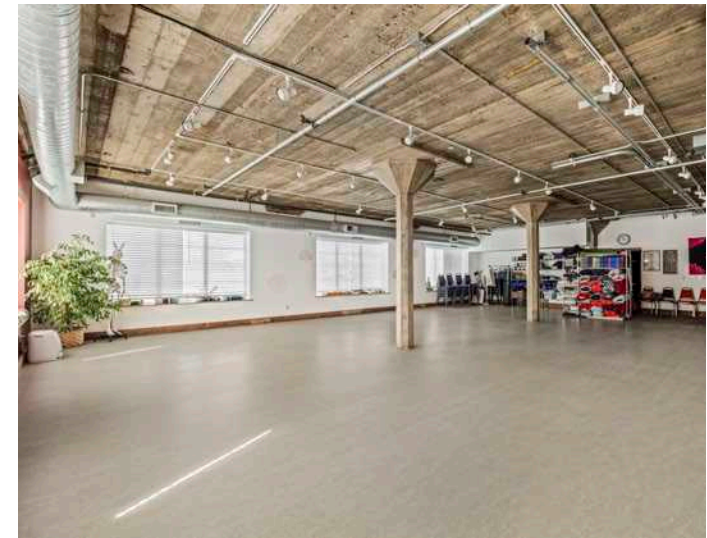
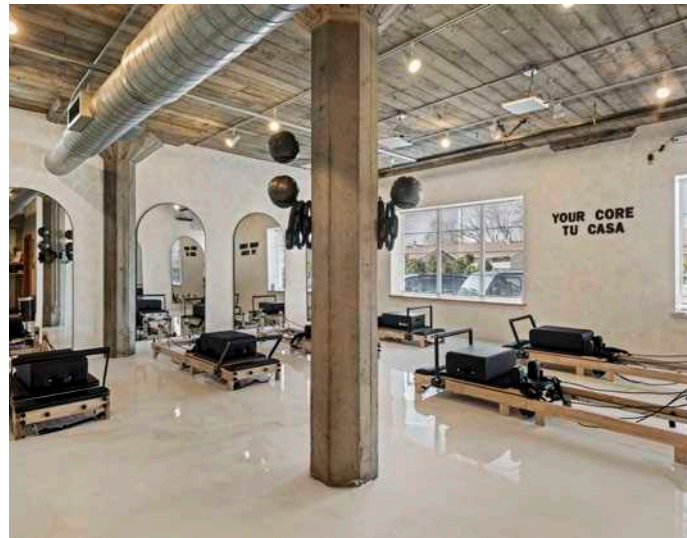
## 3RD FLOOR



# INTERIOR PHOTOS



# INTERIOR PHOTOS



# LOCATION OVERVIEW



# YAKIMA

Yakima, Washington is a well-established regional hub located in south-central Washington, serving as the economic, agricultural, and commercial center of the Yakima Valley. Positioned along Interstate 82, Yakima benefits from direct connectivity to the greater Seattle-Tacoma metropolitan area, the Tri-Cities, and key freight corridors throughout the Pacific Northwest. The city's central location supports strong regional draw for retail, healthcare, education, and service-oriented uses.

Yakima is best known as one of the most productive agricultural regions in the country, particularly for

hops, apples, cherries, wine grapes, and other specialty crops. This diverse agricultural base provides long-term economic stability and supports a wide range of related industries, including food processing, logistics, manufacturing, and agribusiness services. In addition to agriculture, major employers include healthcare systems, educational institutions, and government services, contributing to a balanced employment base.

Yakima serves as a retail and service center for surrounding communities throughout Yakima County, drawing customers from a wide

geographic radius. Strong traffic volumes, combined with established commercial corridors and limited competing urban centers nearby, create durable fundamentals for neighborhood and regional retail properties.

With a cost of living that remains favorable relative to larger West Coast metros, Yakima offers an attractive environment for both residents and businesses. Continued investment in infrastructure, coupled with growth in wine tourism, outdoor recreation, and local amenities, further enhances the city's long-term outlook.

# LOCATION OVERVIEW



13,600+ VPD



EVANS FRUIT

W TIETON DR

# DEMOGRAPHICS

## POPULATION

	1 Mile	3 Miles	5 Miles
2025 EST. TOTAL	10,332	73,786	119,709
2030 PROJECTION	10,162	73,571	119,122
2020 CENSUS	10,491	71,347	117,765

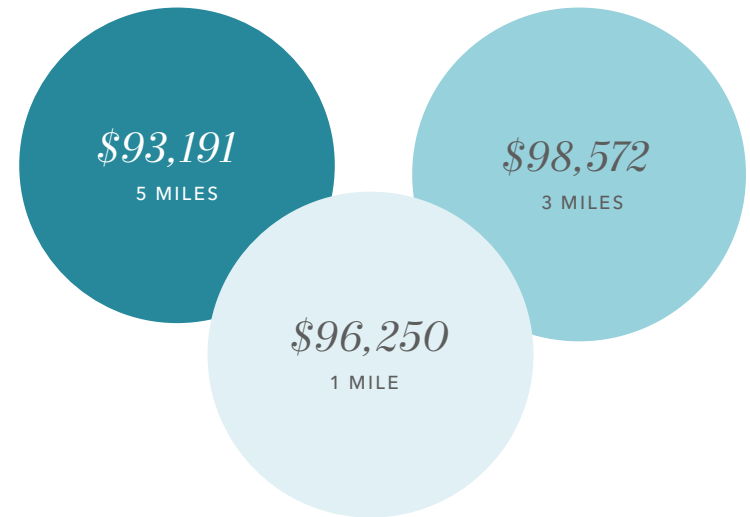
## EMPLOYMENT & INCOME

	1 Mile	3 Miles	5 Miles
2025 EST. MEDIAN HH INCOME	\$72,942	\$76,823	\$72,739
2025 PER CAPITA INCOME	\$41,092	\$37,672	\$33,985
TOTAL BUSINESSES	467	2,452	4,703
TOTAL EMPLOYEES	3,252	20,131	45,921

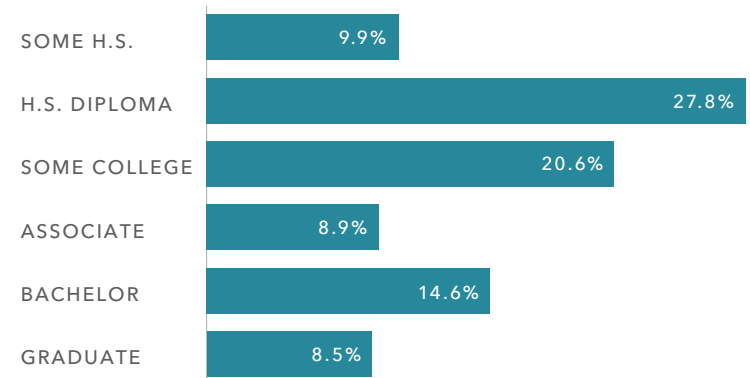
## HOUSEHOLDS

	1 Mile	3 Miles	5 Miles
2025 TOTAL	4,394	28,085	43,453
2030 PROJECTED	4,405	28,448	43,977
2020 CENSUS	4,506	27,720	42,926
2025 - 2030 PROJECTED GROWTH	11	363	524

## AVERAGE HOUSEHOLD INCOME



## EDUCATION (5 MILES)



Data Source: ©2026, Sites USA

*Exclusively listed by*

**DAVID GELLNER**

Executive Vice President

206.747.4338

david.gellner@kidder.com

**PARKER KSIDAKIS**

First Vice President

206.708.9420

parker.ksidakis@kidder.com

**MICHELLE PLAFCAN**

Client Service Coordinator

503.221.2264

michelle.plafcan@kidder.com

**KIDDER.COM**



**km Kidder Mathews**