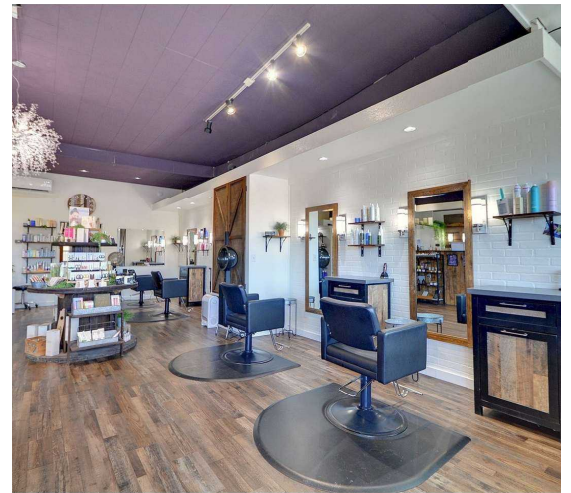


Historic Building for Sale



1415 Pioneer Highway Silvana, WA

\$430,000.00

This fabulous renovated historic bank building is located in the quaint town of Silvana, just a few miles West of Interstate 5 on Highway 530. This building has been an ideal location for spa services for 18 years. Beautifully designed modern updates were made from ceiling to floor, including flooring, lights, plumbing fixtures, walls and ceiling. The possibilities are endless for this apx 1200 asf building. Retail store? Office Space? Spa/Hair Salon? USE YOUR IMAGINATION

MLS # 2406637



Debbie Barger Smith

WINDERMERE REAL ESTATE

Realtor, GRI, CNE, SRES

debbiebargersmith@windermere.com

Cell: 425-356-9177



If you are already working with an agent this is not meant as a solicitation for that business. Lot size, price measurements, etc based on information available from the MLS. Buyer to verify. EQUAL HOUSING OPPORTUNITY.

Windermere
COMMERCIAL

www.debbiebargersmith.com