

SQUALICUM LOFT SPACE

FRONT ROW COMMERCIAL CONDO W/ FOUR PARKING SPACES

905 SQUALICUM WAY #106, BELLINGHAM WA 98225



FOR SALE
\$650,000

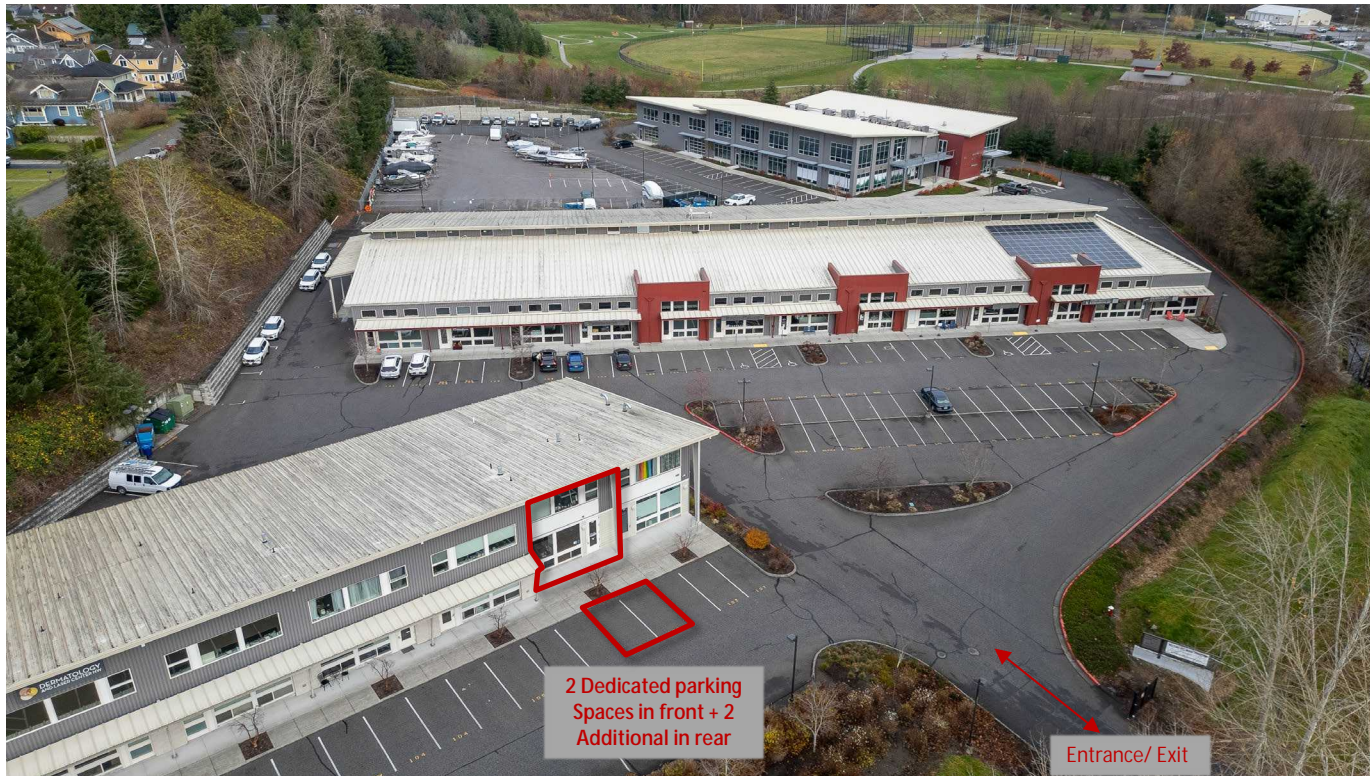
- 1,829 SF
- CURRENTLY DENTAL LAB - HIGH QUALITY BUILD OUT
- 4 DEDICATED PARKING SPACES



PROPERTY SUMMARY

905 SQUALICUM WAY #106

Commercial Condo located within the Squalicum Lofts Business Park. Located at the forefront of the complex, with excellent signage exposure to Squalicum Way. Space features 1,826 SF, currently built out as a Dental lab with reception/ waiting area, 3 operatory spaces, Lab, restroom + office on ground floor, and Processing lab space on second floor. 4 dedicated parking spaces (2 front + 2 rear). Easily accessible to I-5. Walking trails and Squalicum Creek Park adjacent to the east of the complex. Space is part of the Squalicum Lofts Condo Association.



PROPERTY OVERVIEW

Address: 905 Squalicum Way #106, Bellingham WA

APN: 3802241151960006

Total SF: 1,829

Year Built: 2010

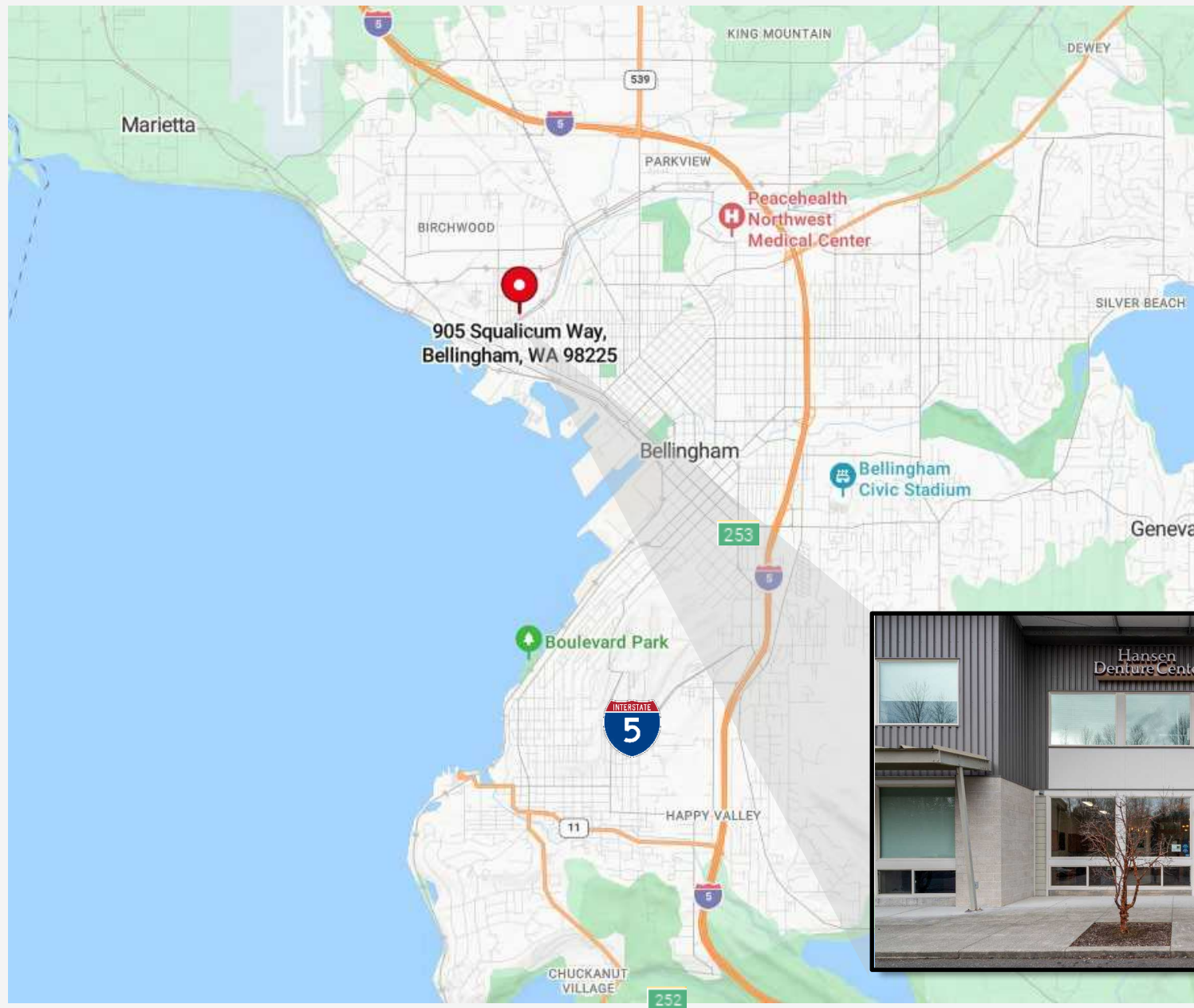
Market: Bellingham

HVAC: Mini Split

3D Walkthrough:

<https://my.matterport.com/show/?m=xvSewqu79yw>

MAP



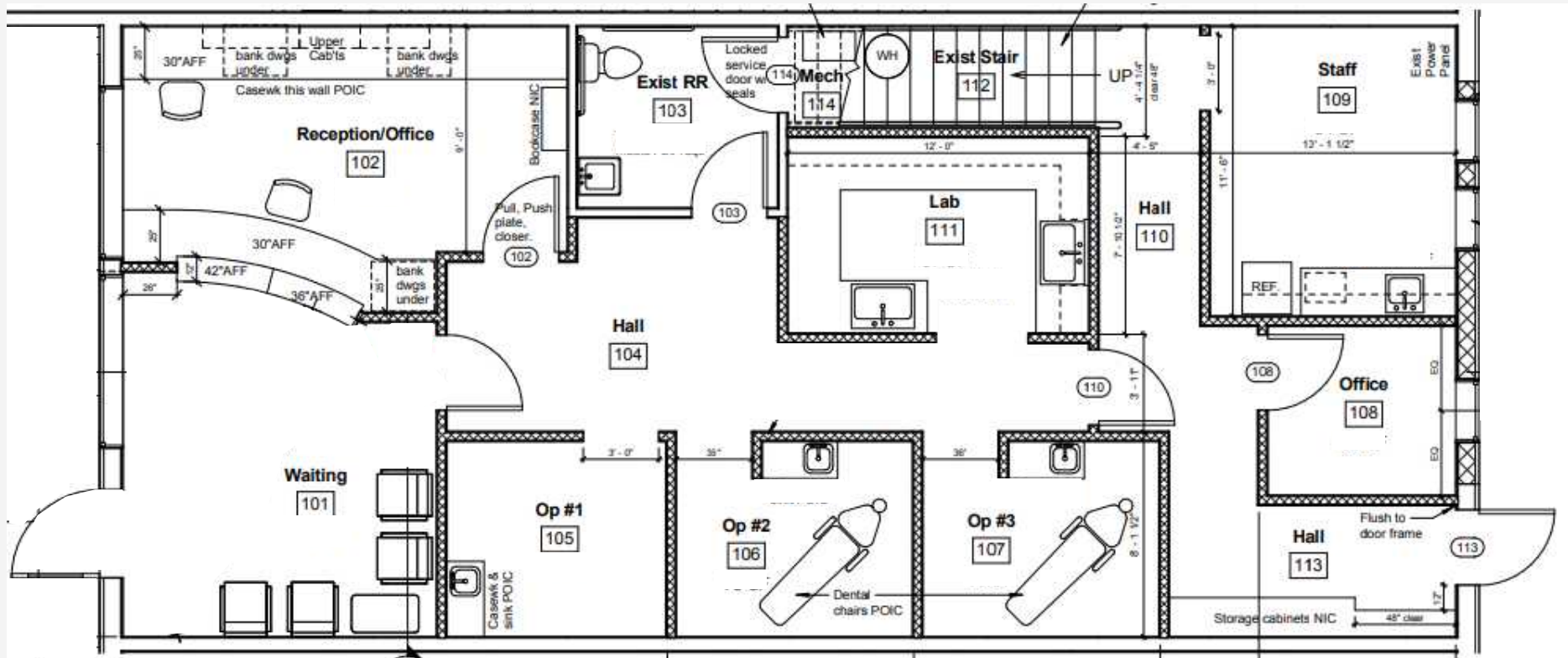


SITE PLAN & FLOOR PLANS

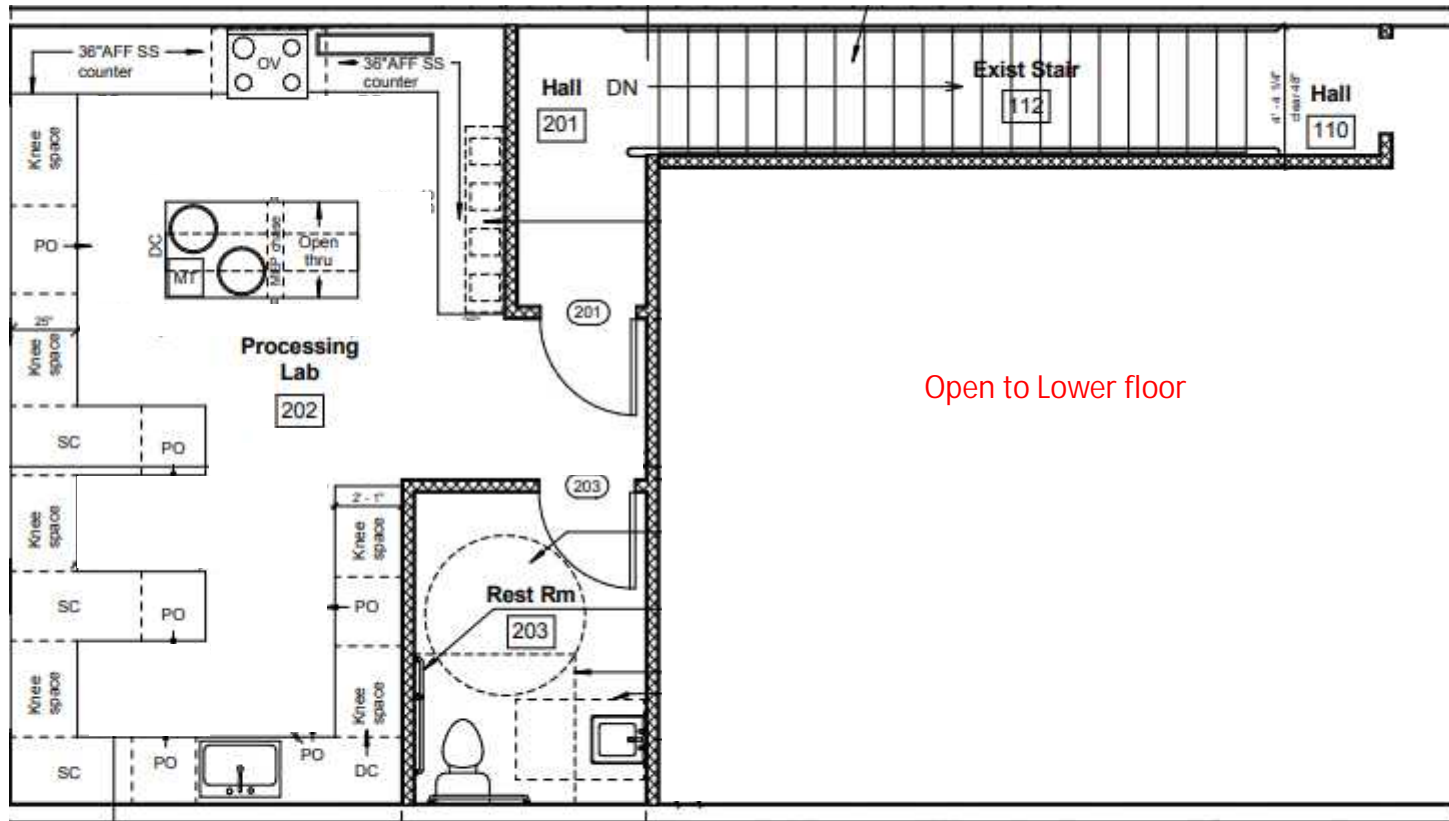
FLOOR PLAN - GROUND FLOOR

3D Walkthrough:

<https://my.matterport.com/show/?m=xvSewqu79yw>



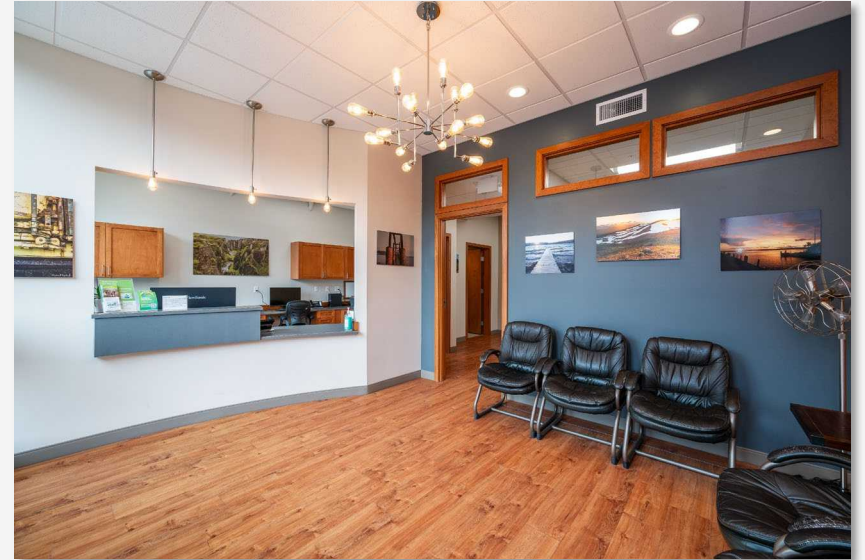
FLOOR PLAN - SECOND FLOOR



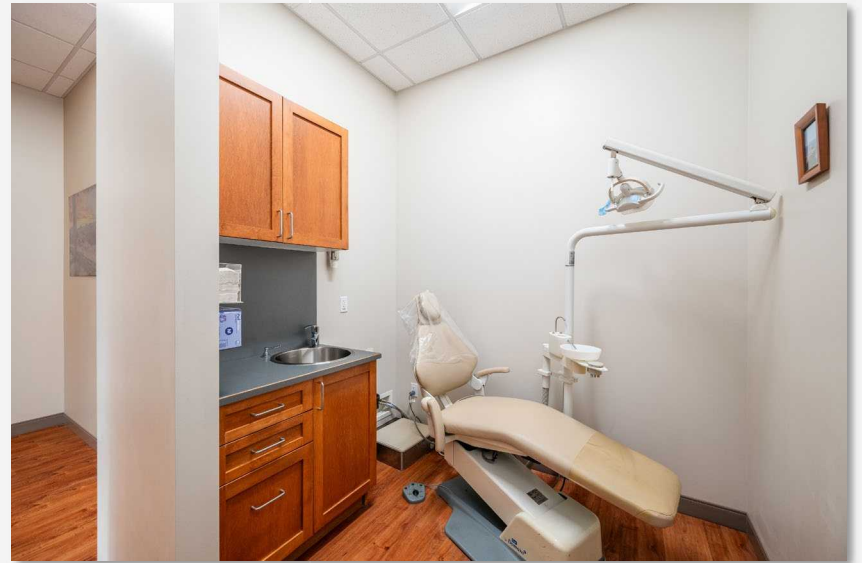


PROPERTY PHOTOS

PHOTOS



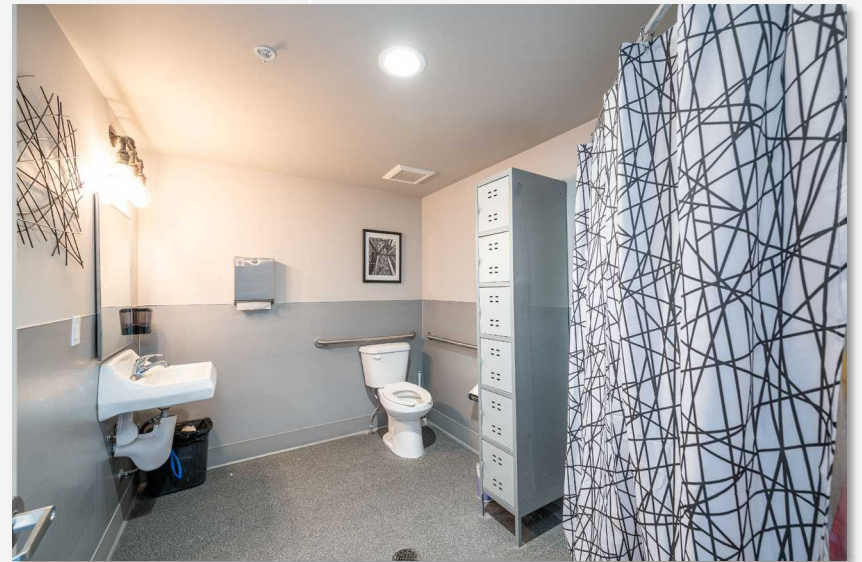
PHOTOS



PHOTOS



PHOTOS





FOR MORE INFORMATION

PLEASE CONTACT:

TRACY CARPENTER

GAGE COMMERCIAL REAL ESTATE, LLC.

BROKER/OWNER

360.303.2608

TRACY@GAGECRE.COM

GREG MARTINEAU, CCIM

GAGE COMMERCIAL REAL ESTATE, LLC.

BROKER/OWNER

360.820.4645

GREG@GAGECRE.COM