

FOR SALE

Sinclair Way & 3rd Avenue
Bremerton, WA 98312



SINCLAIR PLACE - LAND

Lisa Tallman

First Western Properties—Tacoma Inc. | 253.472.0404
6402 Tacoma Mall Blvd, Tacoma, WA 98409 | fwp-inc.com

SINCLAIR PLACE forms an intersection within West Bremerton. Situated amidst a blend of residential and commercial zones, this area embodies the vibrant essence of Bremerton. Here, locals and visitors alike traverse through the streets, exploring the nearby shops, cafes, and restaurants that dot the vicinity. With its convenient location and Sinclair Way & 3rd Avenue serves as a focal point for community interaction and urban activity in this charming corner of Washington state.

SINCLAIR WAY & 3RD AVENUE | LAND

PARCEL NO. 282401-1-085-2001

- 2.73 Acres (Approximately 118,919 sf)
- Undeveloped Land
- Zoned R-10, City of Bremerton
- Price: \$299,999 Conceptual residential drawings available.



DEMOGRAPHICS

POPULATION

Mile 1	Mile 3	Mile 5
4,837	48,151	104,386

AVERAGE HH INCOME

Mile 1	Mile 3	Mile 5
\$89,182	\$103,986	\$111,277

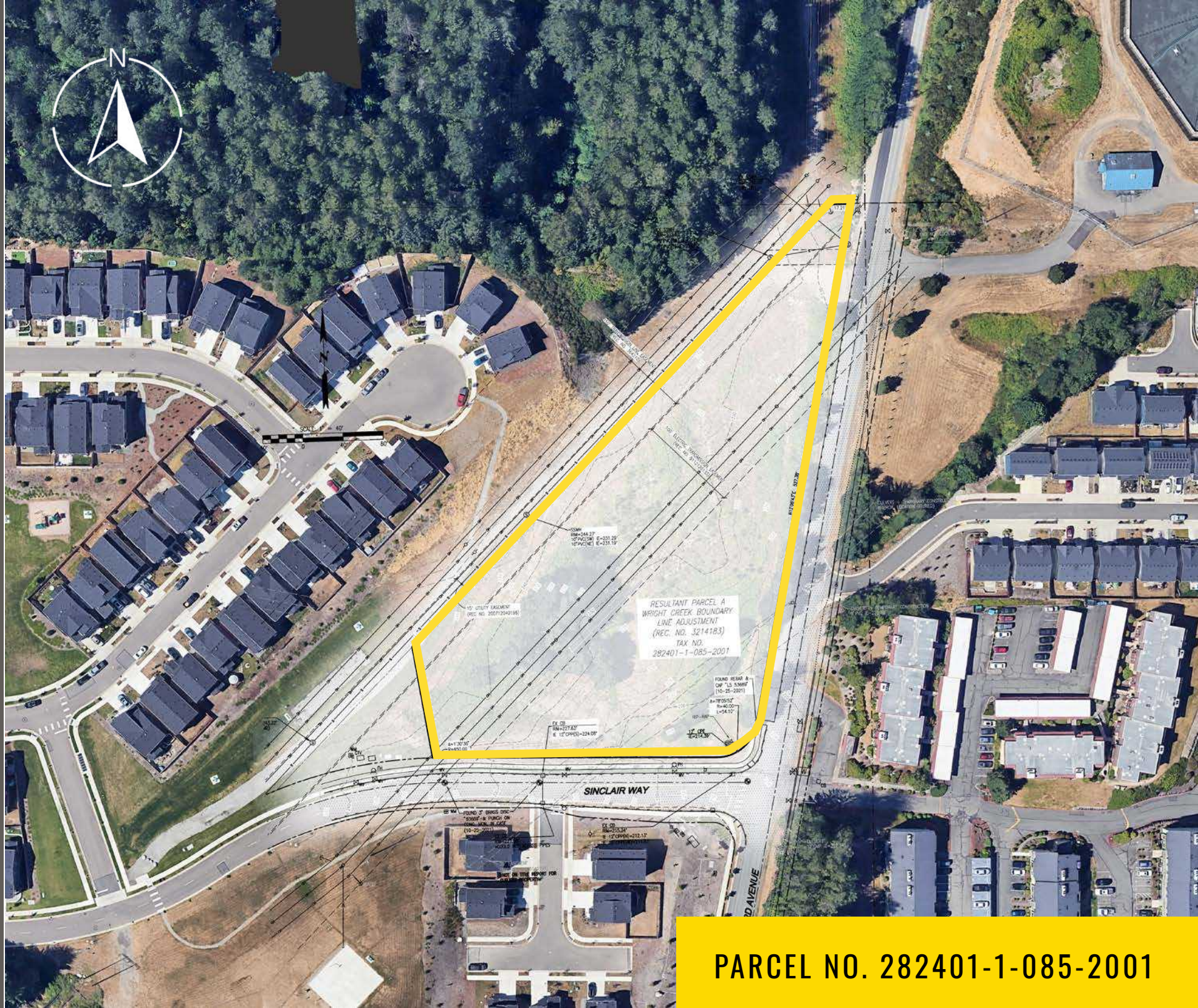
DAYTIME POPULATION

Mile 1	Mile 3	Mile 5
2,714	29,106	59,268



SUMMARY

PARCEL MAP




PARCEL NO. 282401-1-085-2001

TACOMA | KIRKLAND | PORTLAND | SEATTLE

RELATIONSHIP FOCUSED.
RESULTS DRIVEN.

LISA TALLMAN

 253.471.5504

 lisa@firstwesternproperties.com



First Western Properties—Tacoma Inc. | 253.472.0404
6402 Tacoma Mall Blvd, Tacoma, WA 98409 | fwp-inc.com

© First Western Properties, Inc. DISCLAIMER: The above information has been secured from sources believed to be reliable, however, no representations are made to its accuracy. Prospective tenants or buyers should consult their professional advisors and conduct their own independent investigation. Properties are subject to change in price and/or availability without notice.