

FOR SALE

TWO BUILDINGS BUILT IN 2006

3910 3912 MARTIN WAY E, OLYMPIA, WA 98506



SALE PRICE **\$3,695,000**

3910 is 8,265 sq. ft. | 3912 is 8,447 sq. ft.



Debbie Draper-Aikins

360 791 3869

debbie.draper@cbolympia.com



**COLDWELL BANKER
COMMERCIAL**
EVERGREEN OLYMPIC
REALTY, INC.

FOR SALE

TWO BUILDINGS BUILT IN 2006
3910-3912 Martin Way East Olympia, WA 98506



PROPERTY DESCRIPTION

Two high quality buildings built in 2006. Both have new HVAC units. 3910 is 8,265 sq ft and is fully leased to civil engineers and dental clinic. 3912 has 8,447 sq ft and will be vacant at closing. Buildings are located on busy Martin Way and very close to Providence Hospital and I-5 access. Abundance of parking. 3912 can also be sold separately for \$1,695,000 after a lot split and will have 40 parking spaces.

OFFERING SUMMARY

Sale Price:	\$3,695,000
Building Size:	16,712 SF
NOI:	\$0.00
Cap Rate:	0%

DEMOGRAPHICS	1 MILE	2 MILES	3 MILES
Total Households	3,993	12,852	27,655
Total Population	7,483	27,747	63,217
Average HH Income	\$50,837	\$65,873	\$76,028

Debbie Draper-Aikins
(360) 791-3869



**COLDWELL BANKER
COMMERCIAL**
EVERGREEN OLYMPIC
REALTY, INC.

FOR SALE

TWO BUILDINGS BUILT IN 2006
3910-3912 Martin Way East Olympia, WA 98506



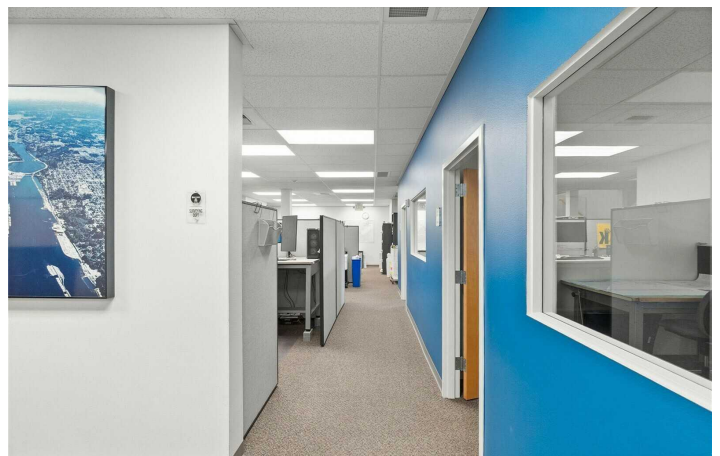
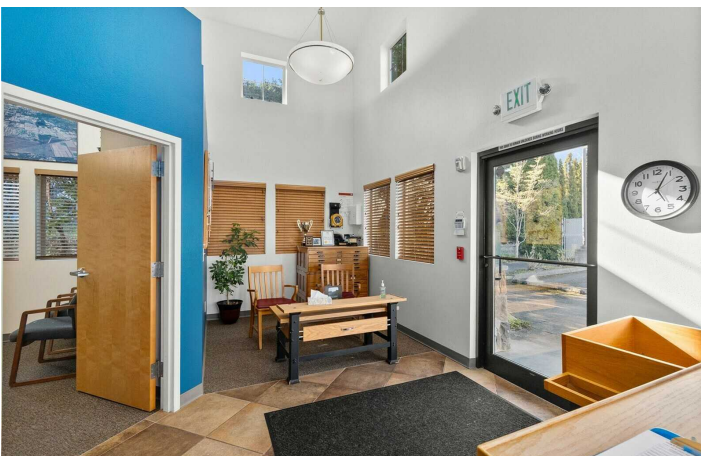
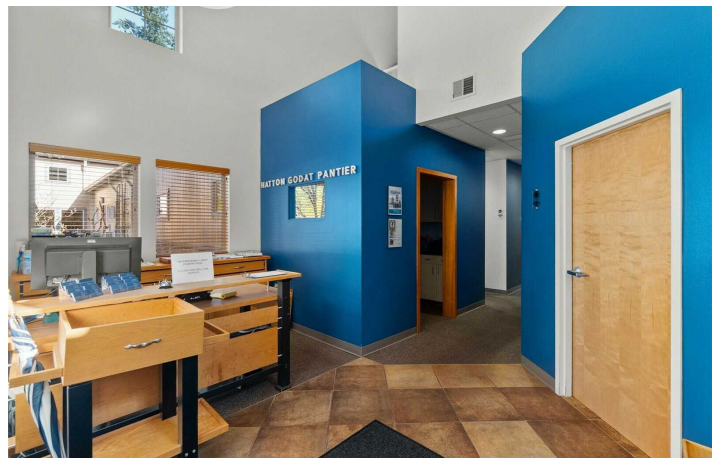
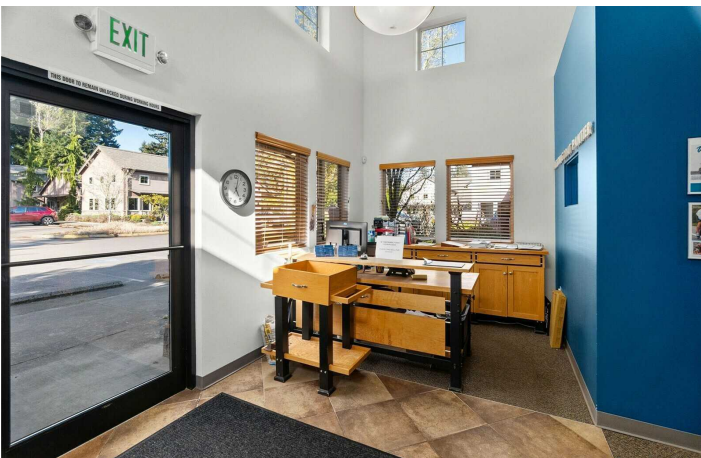
Debbie Draper-Aikins
(360) 791-3869



**COLDWELL BANKER
COMMERCIAL**
EVERGREEN OLYMPIC
REALTY, INC.

FOR SALE

TWO BUILDINGS BUILT IN 2006
3910-3912 Martin Way East Olympia, WA 98506



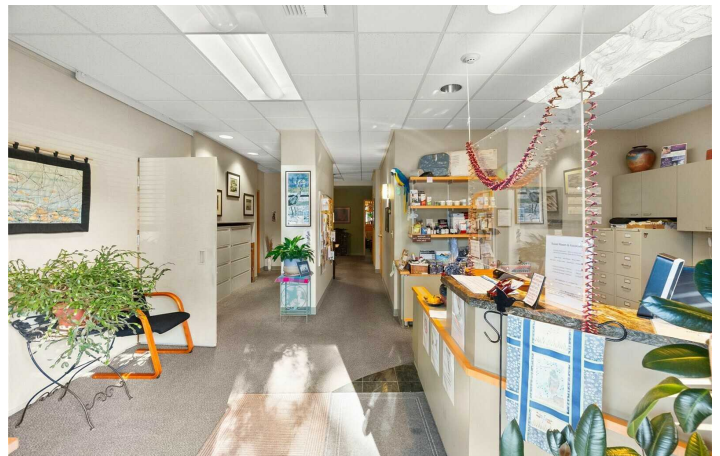
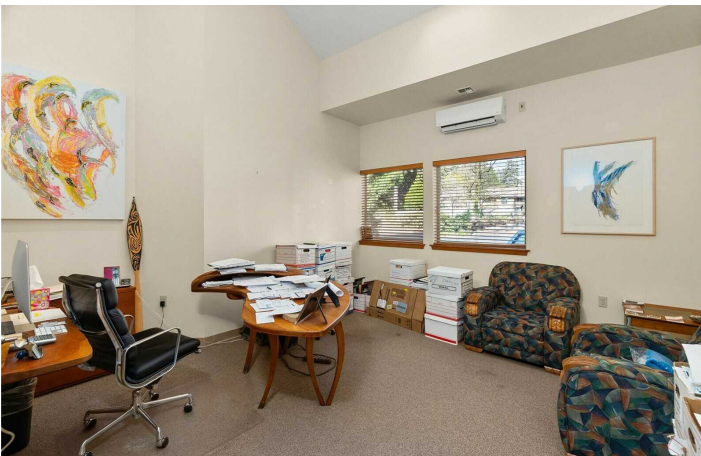
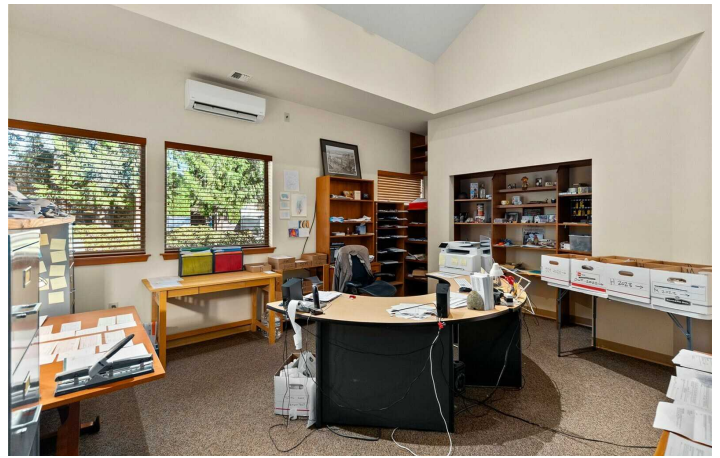
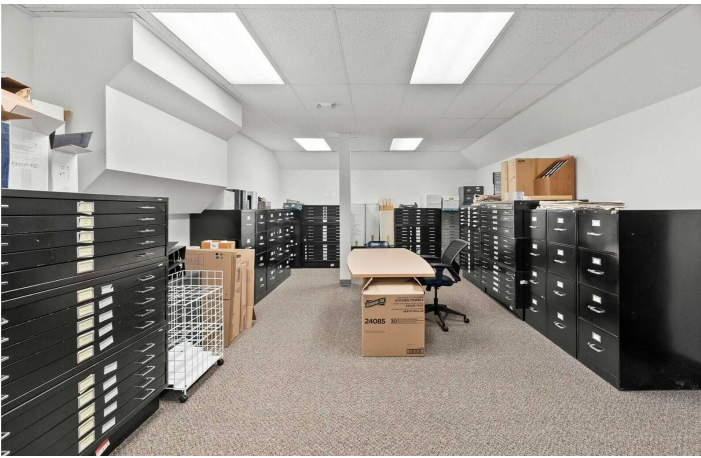
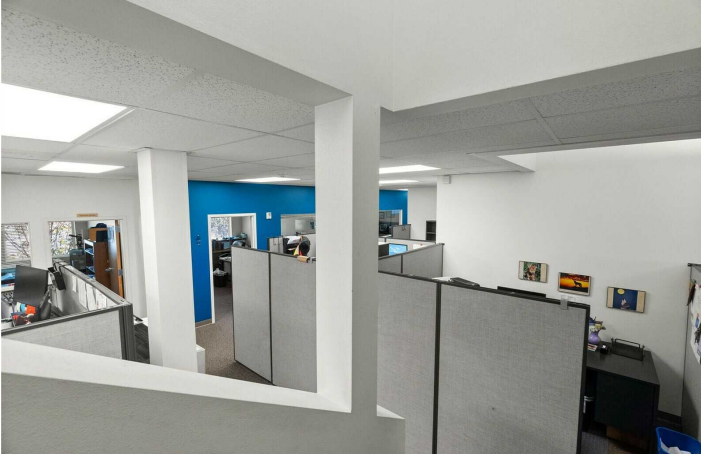
Debbie Draper-Aikins
(360) 791-3869



**COLDWELL BANKER
COMMERCIAL**
EVERGREEN OLYMPIC
REALTY, INC.

FOR SALE

TWO BUILDINGS BUILT IN 2006
3910-3912 Martin Way East Olympia, WA 98506



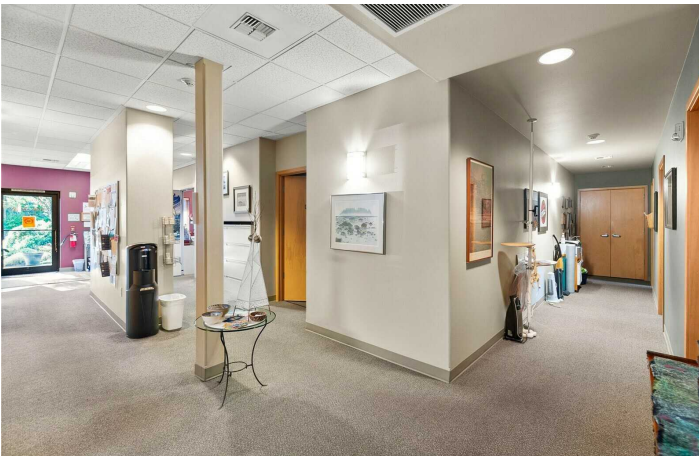
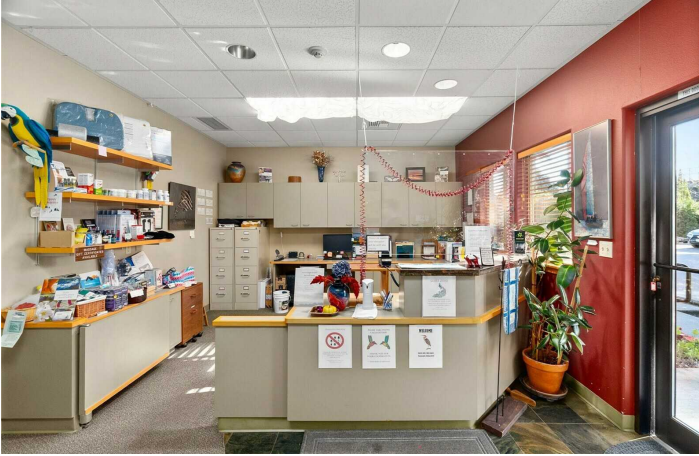
Debbie Draper-Aikins
(360) 791-3869



**COLDWELL BANKER
COMMERCIAL**
EVERGREEN OLYMPIC
REALTY, INC.

FOR SALE

TWO BUILDINGS BUILT IN 2006
3910-3912 Martin Way East Olympia, WA 98506



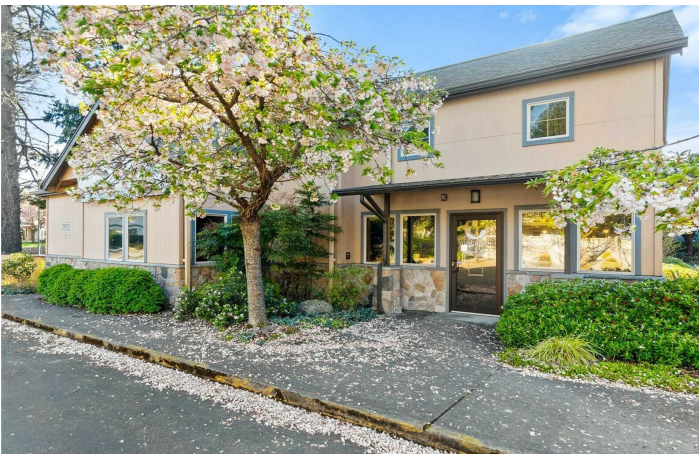
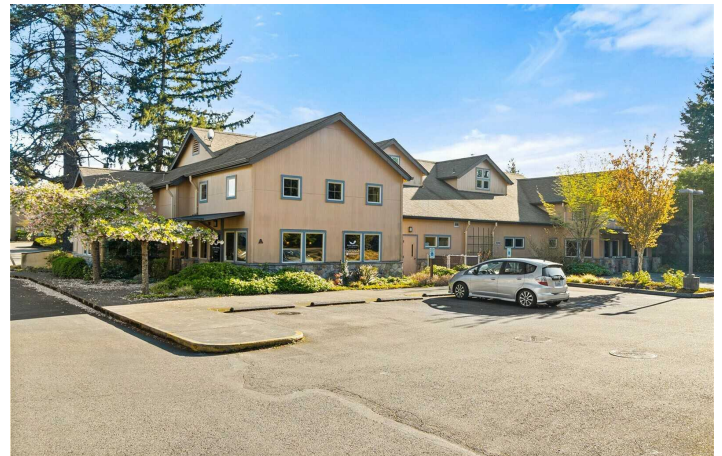
Debbie Draper-Aikins
(360) 791-3869



**COLDWELL BANKER
COMMERCIAL**
EVERGREEN OLYMPIC
REALTY, INC.

FOR SALE

TWO BUILDINGS BUILT IN 2006
3910-3912 Martin Way East Olympia, WA 98506



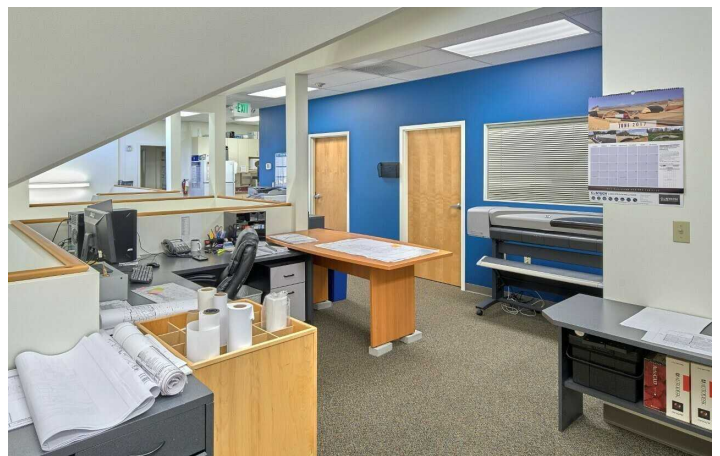
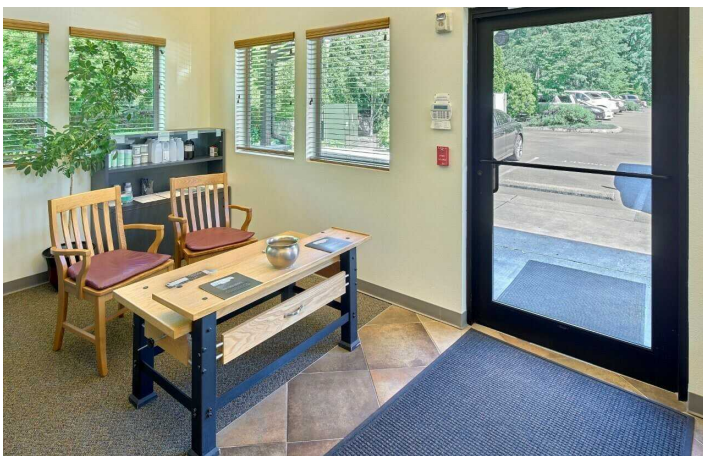
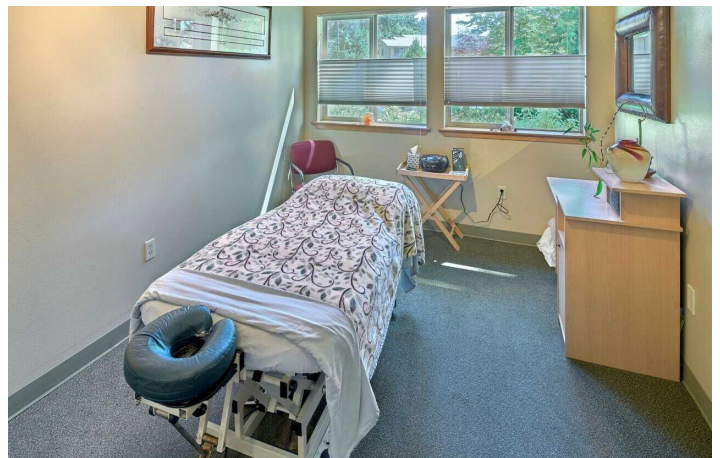
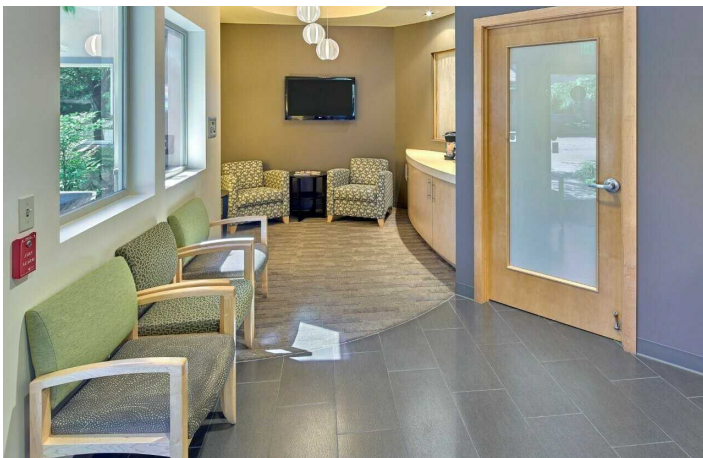
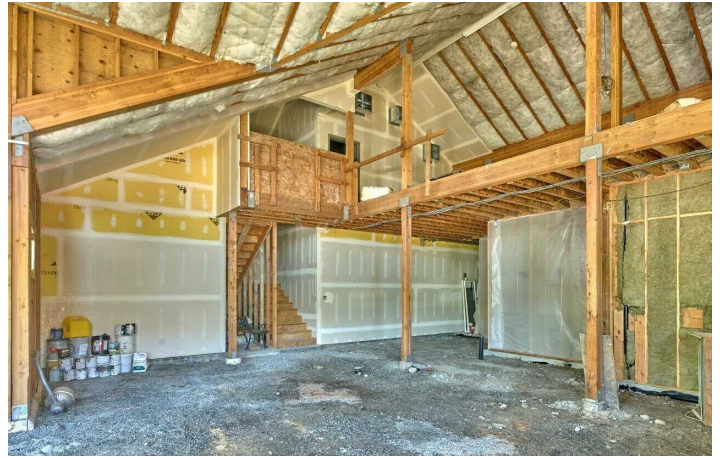
Debbie Draper-Aikins
(360) 791-3869



**COLDWELL BANKER
COMMERCIAL**
EVERGREEN OLYMPIC
REALTY, INC.

FOR SALE

TWO BUILDINGS BUILT IN 2006
3910-3912 Martin Way East Olympia, WA 98506



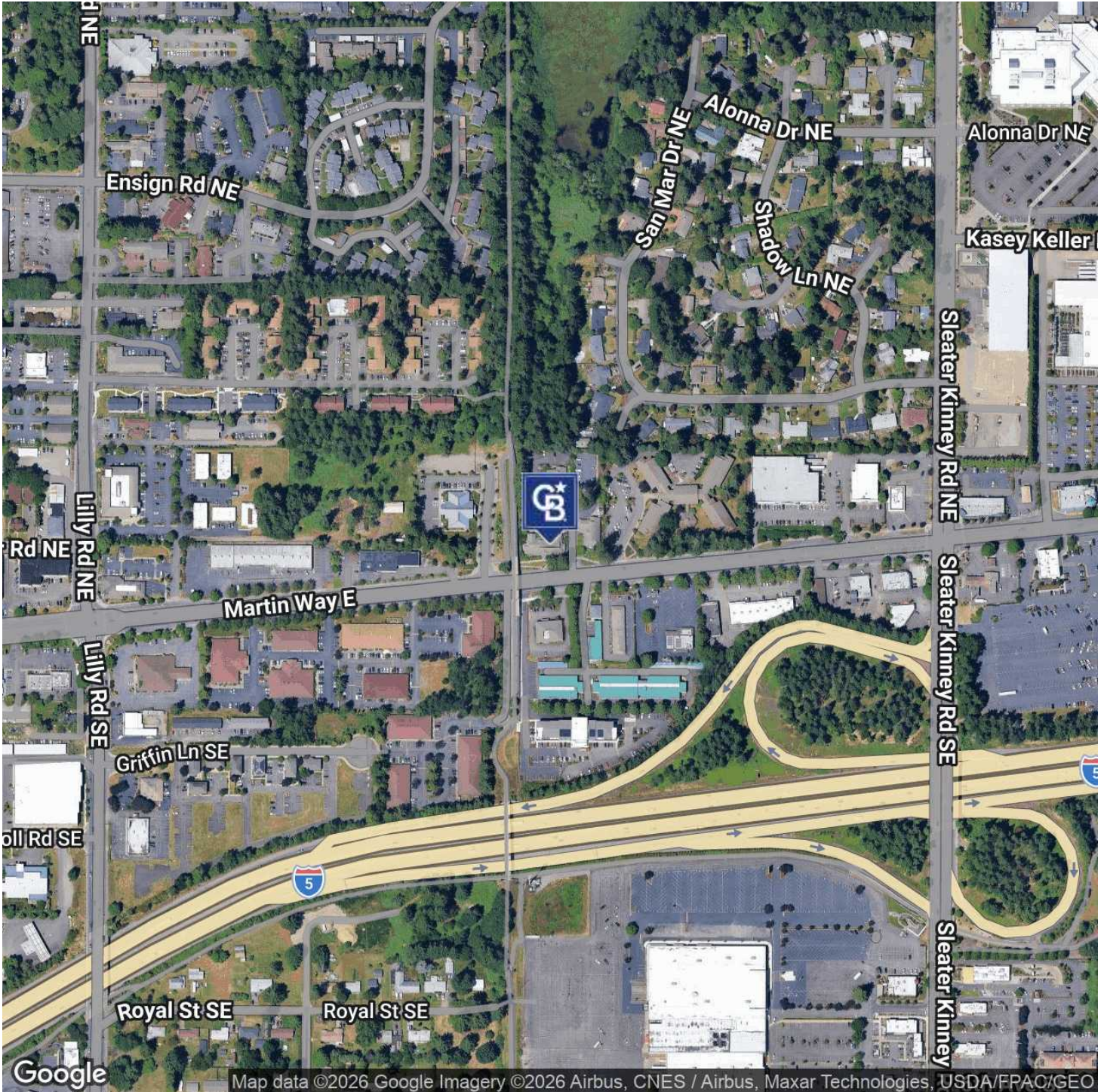
Debbie Draper-Aikins
(360) 791-3869



**COLDWELL BANKER
COMMERCIAL**
EVERGREEN OLYMPIC
REALTY, INC.

FOR SALE

TWO BUILDINGS BUILT IN 2006
3910-3912 Martin Way East Olympia, WA 98506



Debbie Draper-Aikins
(360) 791-3869



**COLDWELL BANKER
COMMERCIAL**
EVERGREEN OLYMPIC
REALTY, INC.