



19119 16TH AVENUE SOUTH | SEATAC, WA

SeaTac Office-Flex Building For Sale

CBRE

Outstanding Flex Office Building



27,794 SF
Total



109 parking stalls
(covered and uncovered)



3 floor,
stand-alone
building



24/7 security
surveillance



2 dock
high doors



Training & boardroom
on upper floors



1.5 AC
fenced and
secured site



On every floor:
Kitchenette, restrooms,
and IT/server room



1 Elevator



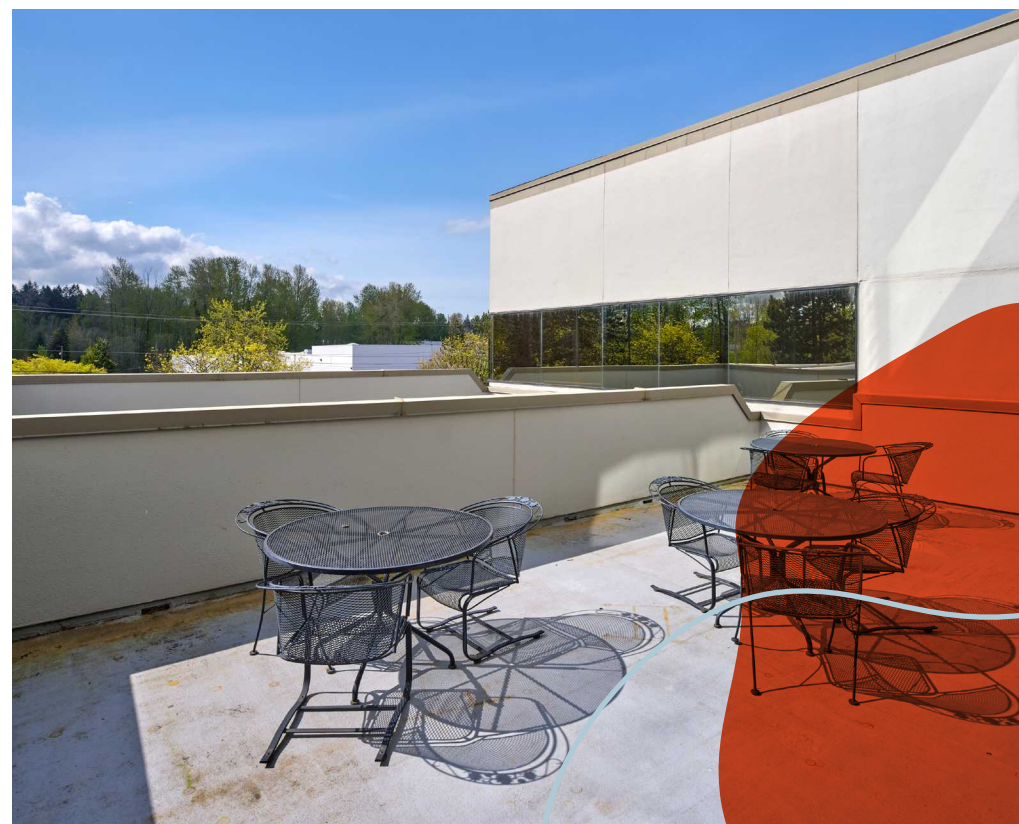
Telecommunication
fiber carrier: Lumen



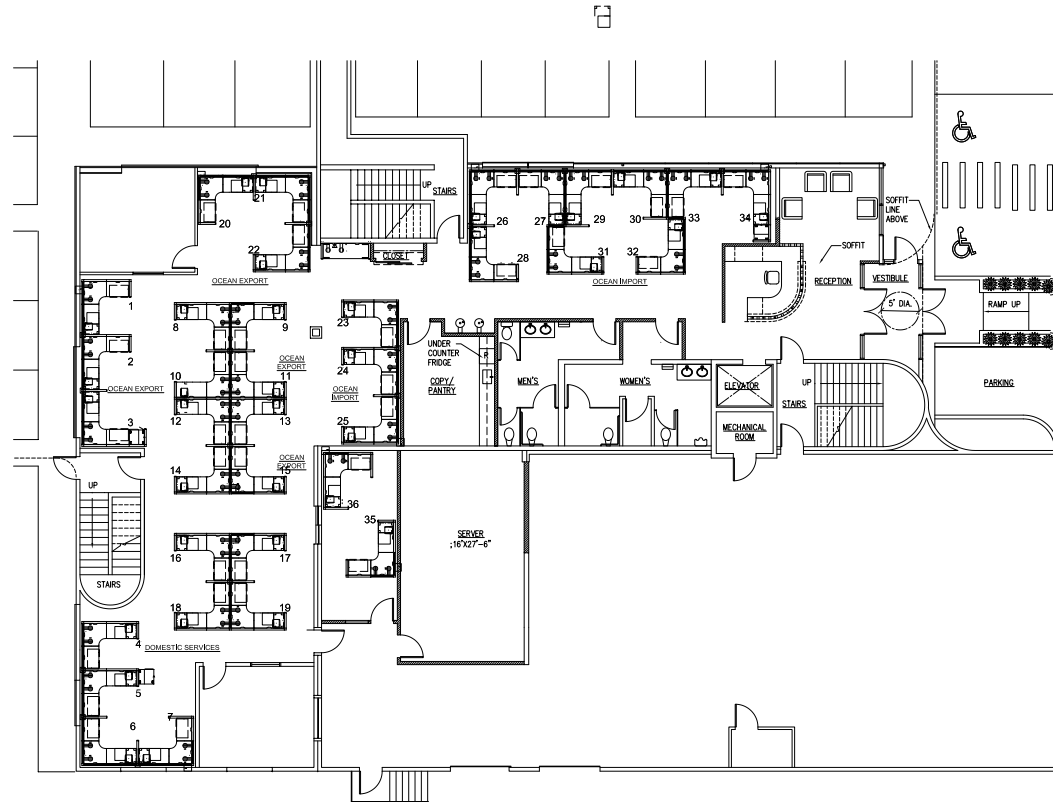
On-site backup generator
Kohler, Diesel powered, 200kw, 480v







First Floor



2 Private Offices

1 Server Room

34 Seats

2 Dock High Doors

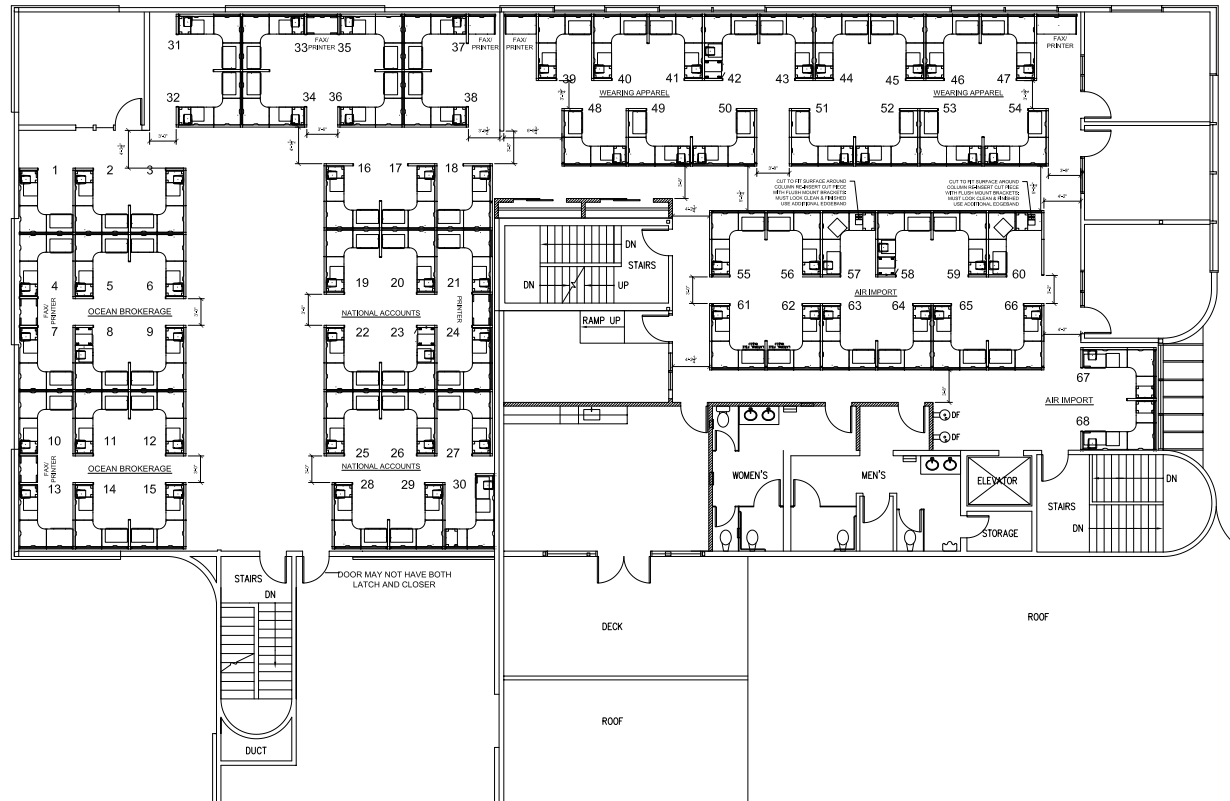
1 Kitchenette

1 Dock Leveler

9,265 RSF

5,233 RSF OFFICE / 4,032 RSF WAREHOUSE

Second Floor



4 Private Offices

40 Seats

1 Training Room

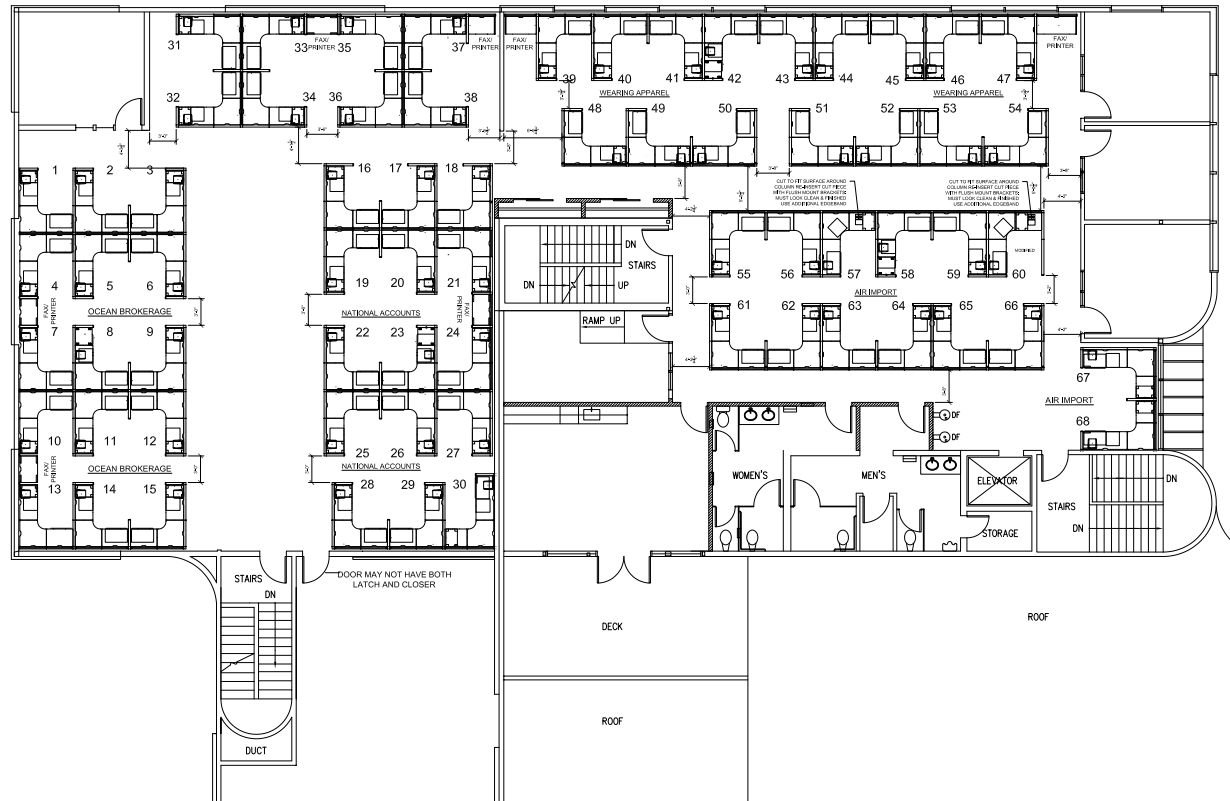
1 Kitchenette

1 Server Room

1 Large Patio

9,265 RSF
OFFICE AVAILABLE

Third Floor



5 Private Offices

1 Kitchenette

1 Private Deck

Open Work Area

1 Server Room

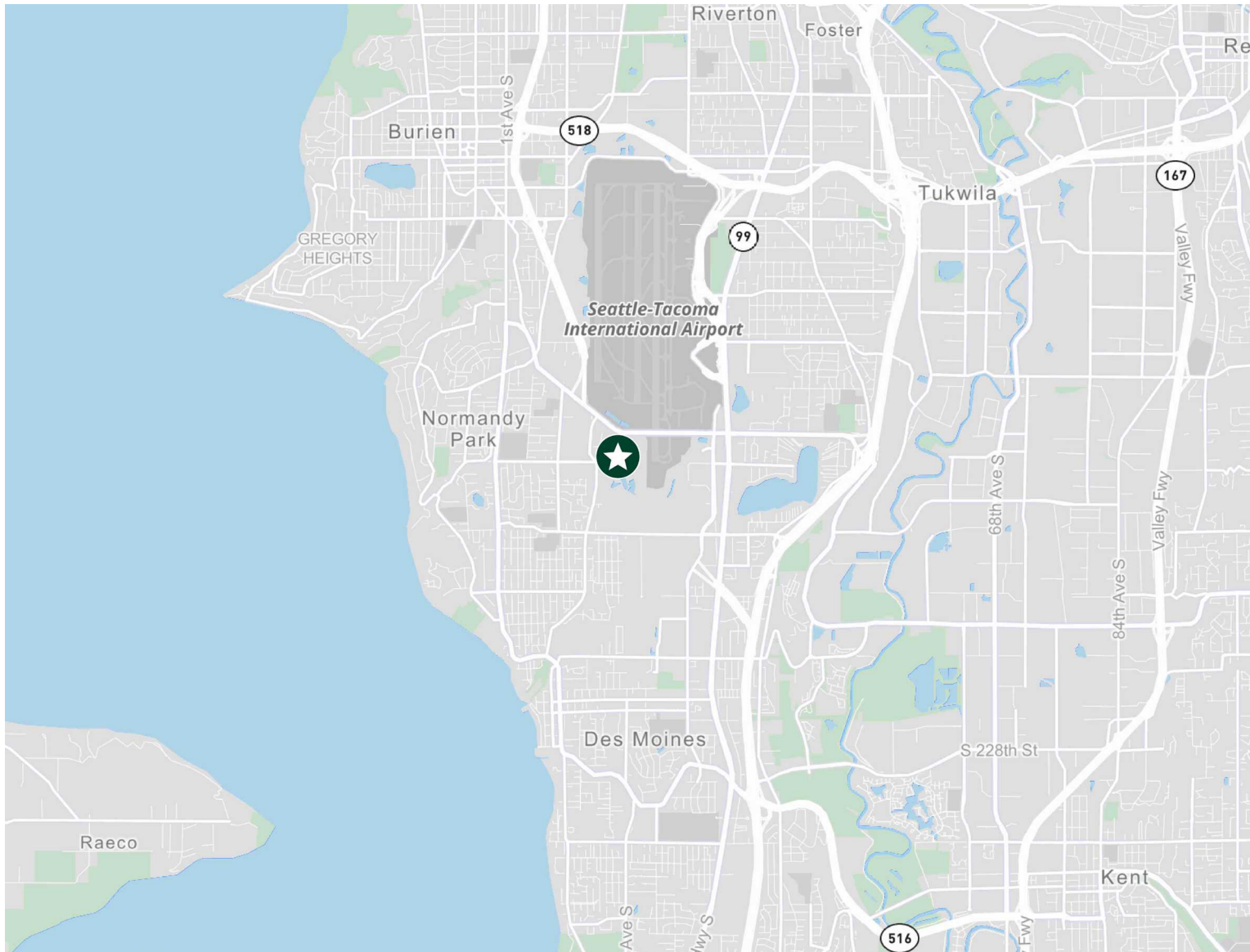
1 Copy Room

1 Boardroom

**9,264 RSF
OFFICE AVAILABLE**

Area Map

Close proximity to I-5, I-405, highways 99, 518, and 509.



19119 16th Avenue South

SEATTLE, WA



CONTACTS

Shawn Childs
First Vice President
+1 206 399 9582
shawn.childs@cbre.com

Andrew Stark
Executive Vice President
+1 206 442 2746
andrew.stark@cbre.com

CBRE

© 2026 CBRE, Inc. All rights reserved. This information has been obtained from sources believed reliable but has not been verified for accuracy or completeness. CBRE, Inc. makes no guarantee, representation or warranty and accepts no responsibility or liability as to the accuracy, completeness, or reliability of the information contained herein. You should conduct a careful, independent investigation of the property and verify all information. Any reliance on this information is solely at your own risk. CBRE and the CBRE logo are service marks of CBRE, Inc. All other marks displayed on this document are the property of their respective owners, and the use of such marks does not imply any affiliation with or endorsement of CBRE. Photos herein are the property of their respective owners. Use of these images without the express written consent of the owner is prohibited.