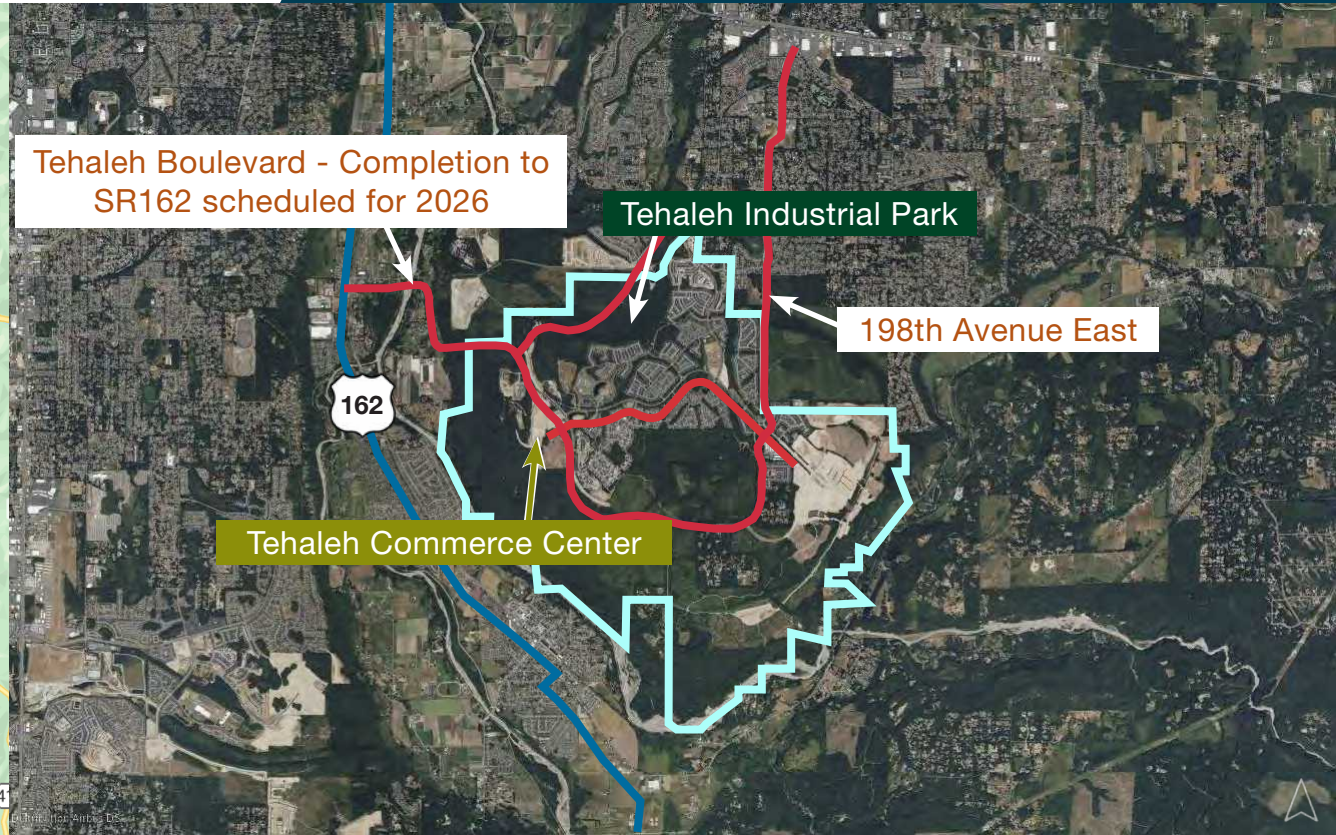


# Tehaleh Commerce Center Tehaleh Industrial Park

Bonney Lake | Washington 98391



Tehaleh Boulevard - Completion to SR162 scheduled for 2026

Tehaleh Industrial Park

198th Avenue East

Tehaleh Commerce Center

## Property Highlights

- 340+ acres (commercial/industrial)
- Entitlements complete including zoning and environmental review
- Utilities stubbed to site
- Arterials, curbs, gutters sidewalk and street landscaping completed
- Shovel ready - Sites delivered rough graded at 1% to 2% slope on usable SF
- Extension of Tehaleh Boulevard to the Orting Highway (SR-162) by Q-1 2027
- CC&Rs and Commercial Owners Association to protect value
- Master storm water system off-site, allowing maximum lot efficiencies
- Stable, unconstrained gravelly soils, are ideal for year-round construction
- Available for sale

**Dave Douglas, SIOR, CCIM**  
+1 253 203 1326  
ddouglas@nai-psp.com

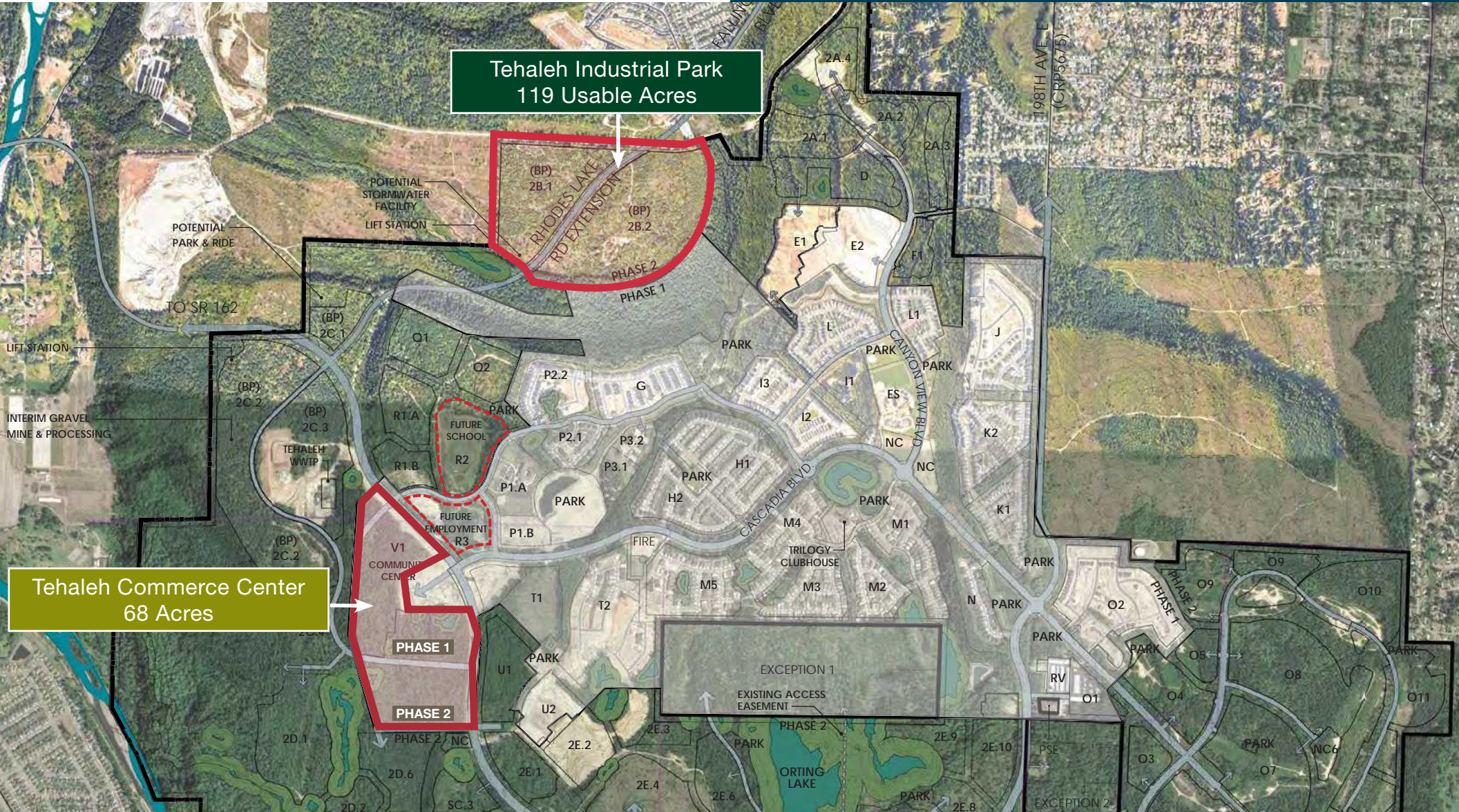
**Kyle Schipper, SIOR**  
+1 253 203 1326  
kschipper@nai-psp.com

**Arie Salomon, SIOR, CCIM**  
+1 425 586 5636  
asalomon@nai-psp.com

**Kent Channing**  
+1 425 586 5628  
kchanning@nai-psp.com

# Tehaleh Commerce Center Tehaleh Industrial Park

Bonney Lake | Washington 98391



Tehaleh Industrial Park  
119 Usable Acres

Tehaleh Commerce Center  
68 Acres

# Tehaleh Commerce Center

Bonney Lake | Washington 98391

tehalēh®



CC Edwards Construction



Rhodes Lake Road/Tehaleh Boulevard Extension Underway



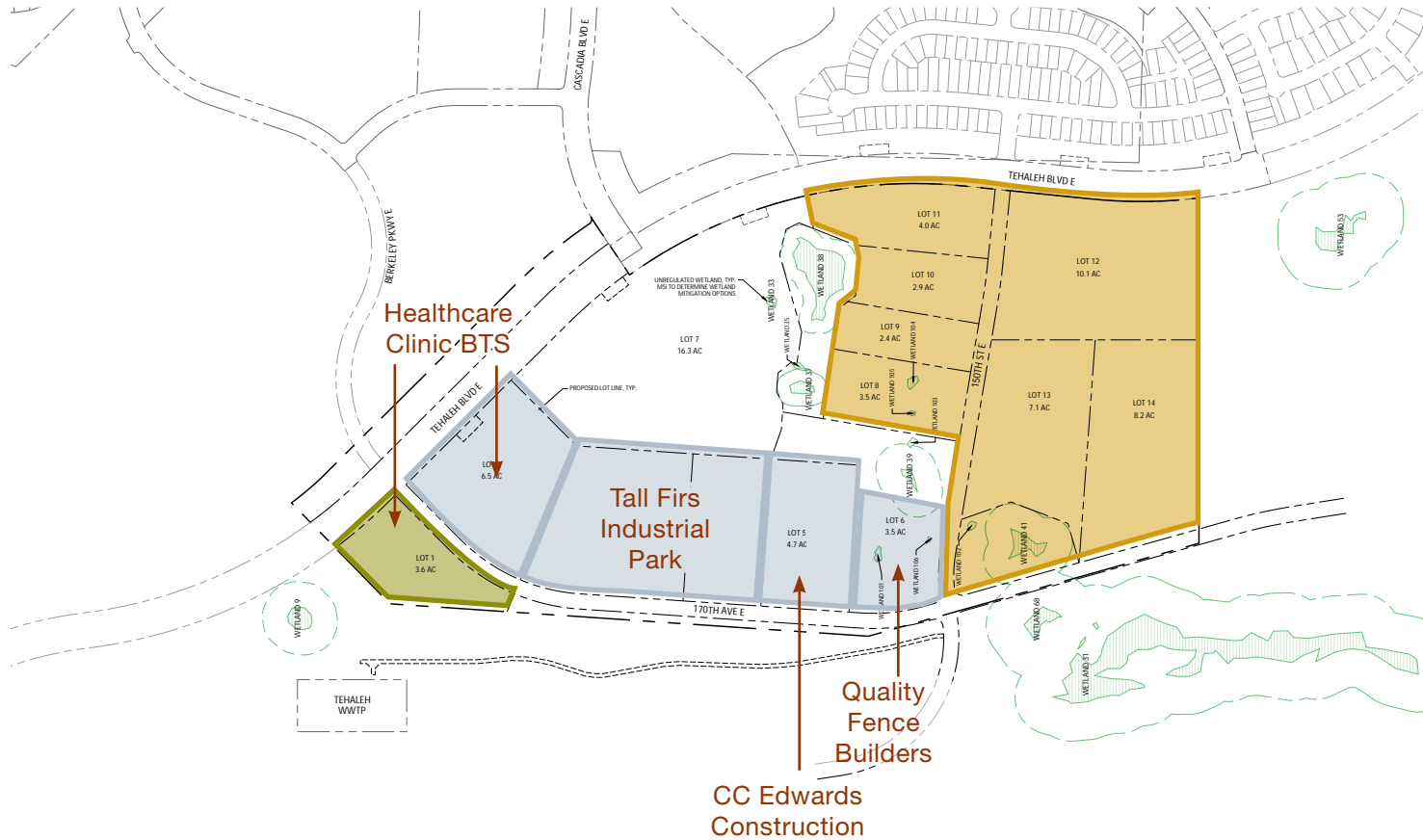
Tall Firs Industrial Park



Rhodes Lake Road/Tehaleh Boulevard Extension Underway

# Tehaleh Commerce Center

Bonney Lake | Washington 98391



## Tehaleh Commerce Center Plat

- Pending Sales
- Available
- 2028 Lot Delivery
- Sold



# Tehaleh Industrial Park

Bonney Lake | Washington 98391

tehaleh®



Entry to Tehaleh Industrial Park



Lot 2.B.1



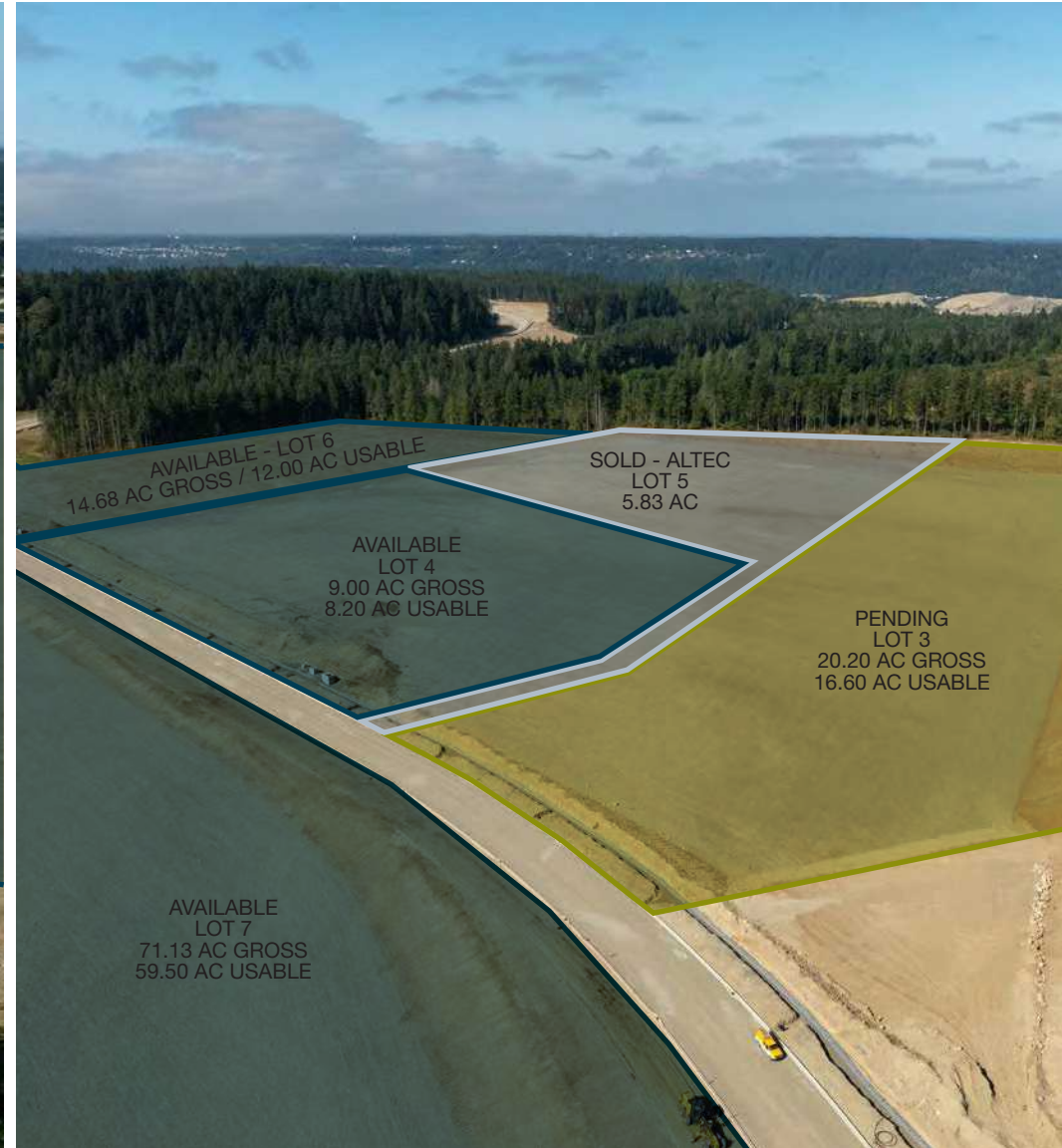
Lot 2.B.2



# Tehaleh Industrial Park

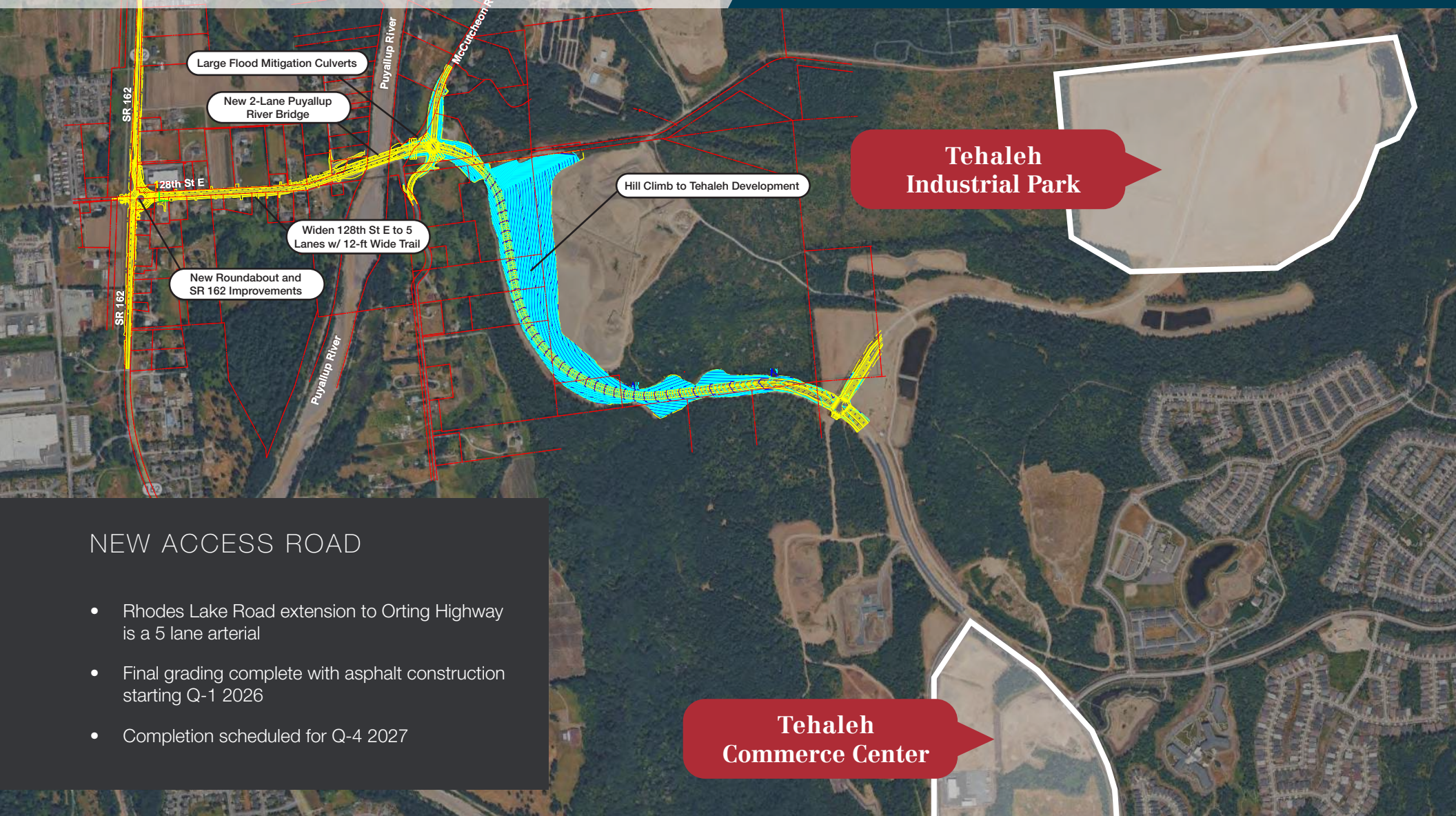
Bonney Lake | Washington 98391

tehaleh®



# Tehaleh Commerce Center Tehaleh Industrial Park

Bonney Lake | Washington 98391



## NEW ACCESS ROAD

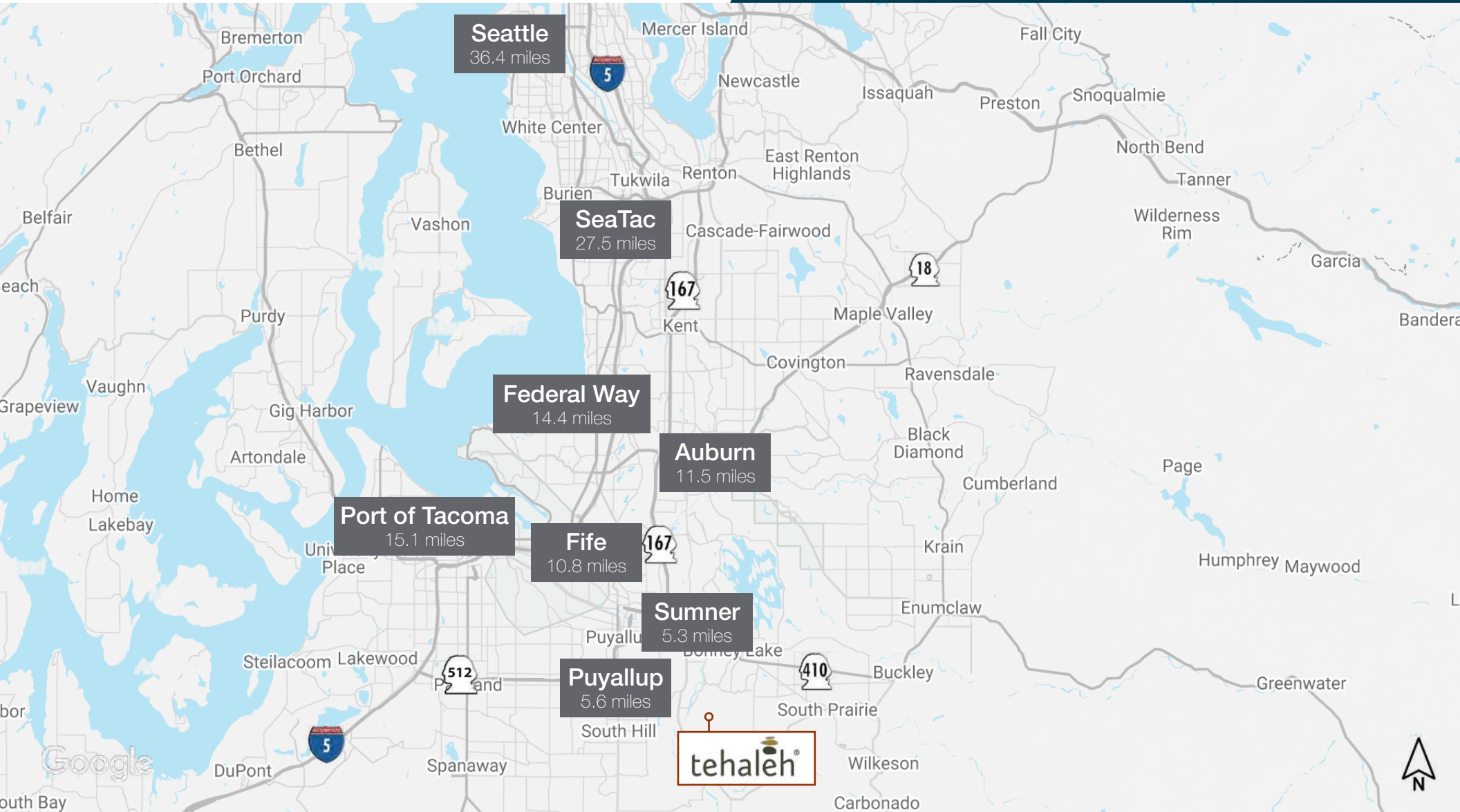
- Rhodes Lake Road extension to Orting Highway is a 5 lane arterial
- Final grading complete with asphalt construction starting Q-1 2026
- Completion scheduled for Q-4 2027

**Tehaleh  
Commerce Center**

**Tehaleh  
Industrial Park**

# Tehaleh Commerce Center Tehaleh Industrial Park

Bonney Lake | Washington 98391



Exclusively marketed by:



**Dave Douglas**

Partner - SIOR, CCIM  
+1 253 203 1326  
ddouglas@nai-ppsp.com

**Kyle Schipper**

Partner - SIOR  
+1 253 203 1326  
kschipper@nai-ppsp.com

**Kent Channing**

Partner  
+1 425 586 5628  
kchanning@nai-ppsp.com

**Arie Salomon**

Principal - SIOR, CCIM  
+1 425 586 5636  
asalomon@nai-ppsp.com

