

SUBJECT  
PROPERTY

144TH AVE NE

FOR SALE

# WOOD-VIEW AVALON BUILDING

*+16,965 SF*  
AVAILABLE

*+1,350 SF*  
OFFICE

19718 144TH AVE NE

# RARE, CLEAR-SPAN CONCRETE TILT-UP

Easily accessible

Clear height of 18' - 20'

Three grade-level doors; one with loading dock

Sprinklered for fire protection

3-phase power, 800 amps

Built in 1988

Zoned Industrial (I) (City of Woodinville)

Covered open area is a perfect compliment to participate in Woodinville's popular wine industry

**6 MIN**

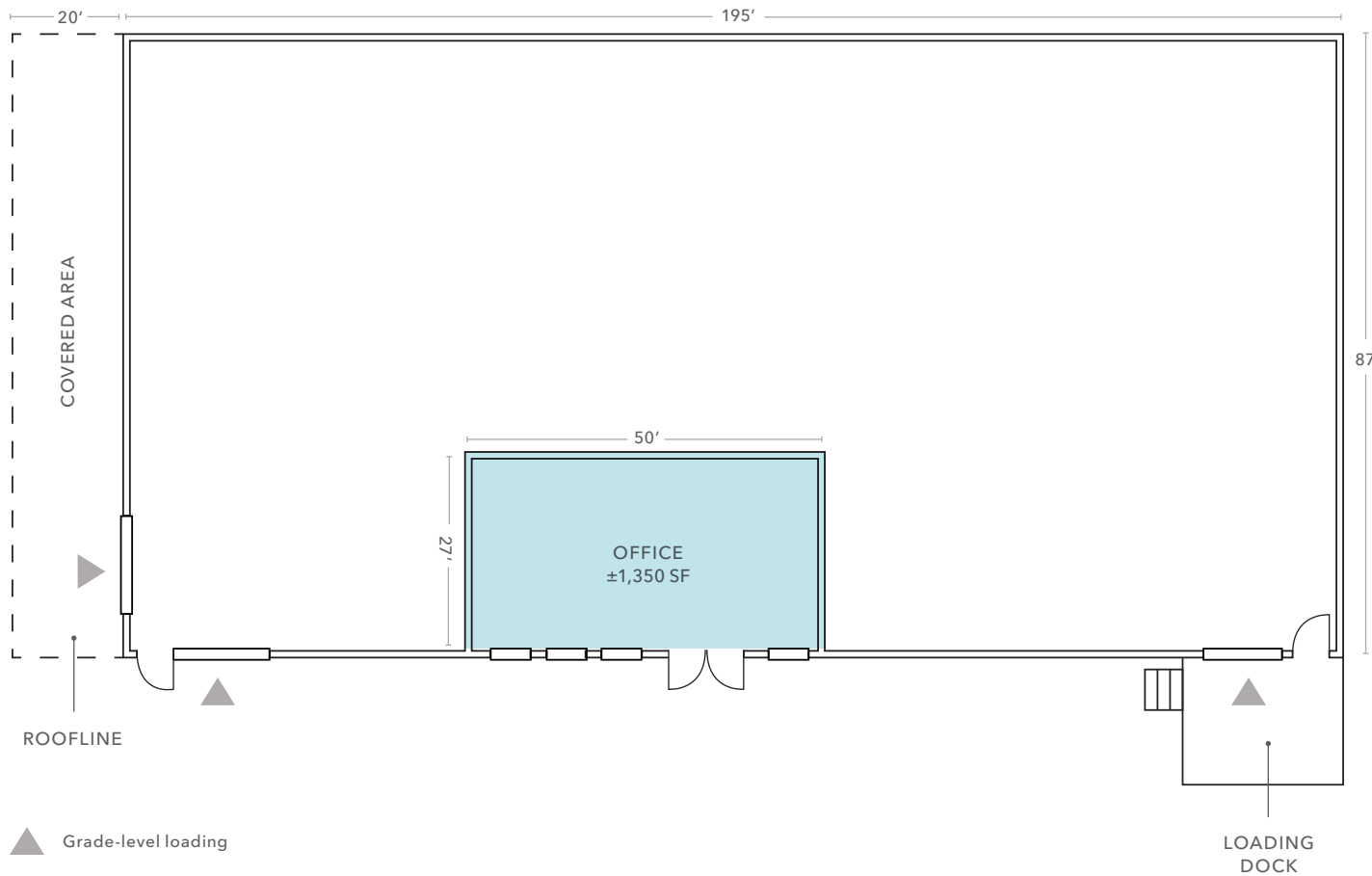
DRIVE TO  
WOODINVILLE

**3 MIN**

DRIVE TO  
WA-522



# FLOOR PLAN



*±16,965 SF*

AVAILABLE

*±1,350 SF*

OFFICE

*39,640 SF*

LOT SIZE

*NOW*

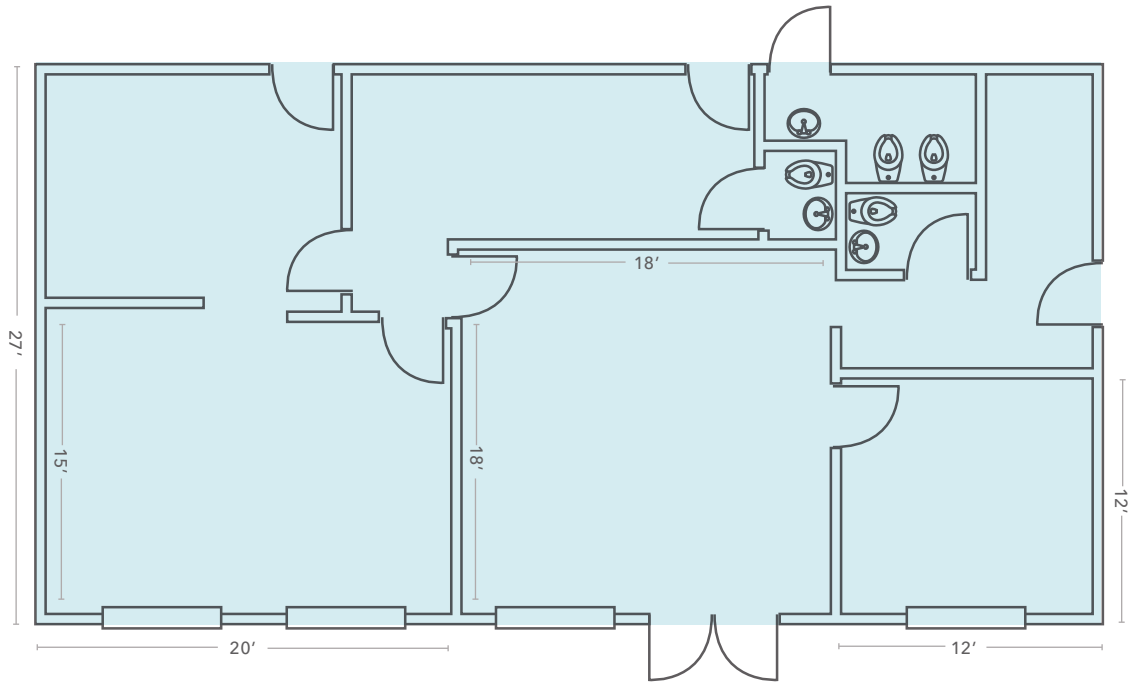
AVAILABLE FOR OCCUPANCY

*\$5.2M*

ASKING PRICE



# OFFICE FLOOR PLAN

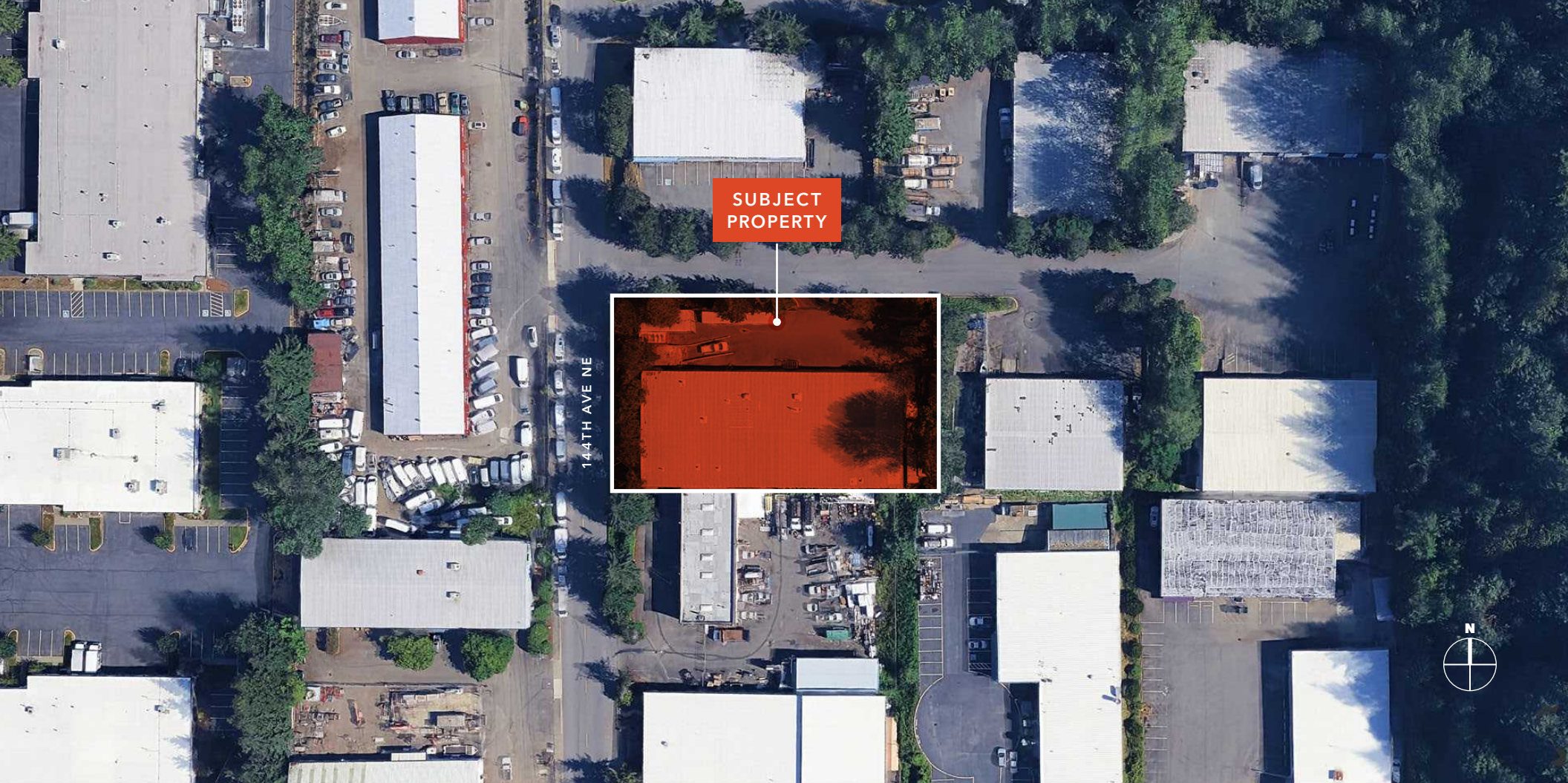


*±1,350 SF*  
OFFICE

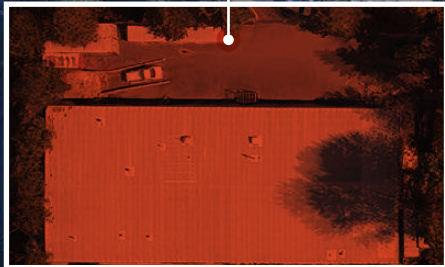
*NOW*  
AVAILABLE FOR OCCUPANCY

*\$5.2M*  
ASKING PRICE





SUBJECT  
PROPERTY



144TH AVE NE



# WOOD-VIEW AVALON BUILDING

*For more information about  
this property, please contact*

**ROGER THORN**  
First Vice President  
425.450.1120  
roger.thorn@kidder.com

**JAMES LEPTICH**  
Senior Vice President  
425.450.1159  
james.leptich@kidder.com

[KIDDER.COM](http://KIDDER.COM)

This information supplied herein is from sources we deem reliable. It is provided without any representation, warranty, or guarantee, expressed or implied as to its accuracy. Prospective Buyer or Tenant should conduct an independent investigation and verification of all matters deemed to be material, including, but not limited to, statements of income and expenses. Consult your attorney, accountant, or other professional advisor. All Kidder Mathews designs are the sole property of Kidder Mathews. Branded materials and layouts are not authorized for use by any other firm or person.

