



SPERRY

CAPSTONE COMMERCIAL

4022/4028 CALIFORNIA AVE SW
SEATTLE, WA 98116

MONTEREY COURT APARTMENTS

Offering Memorandum



Ryan Downing
PRINCIPAL/BROKER

206.466.9147
ryan.downing@sperrycga.com
WA #2512



Cory Walken
SENIOR BROKER

360.319.1649
cory.walken@sperrycga.com
WA #86060

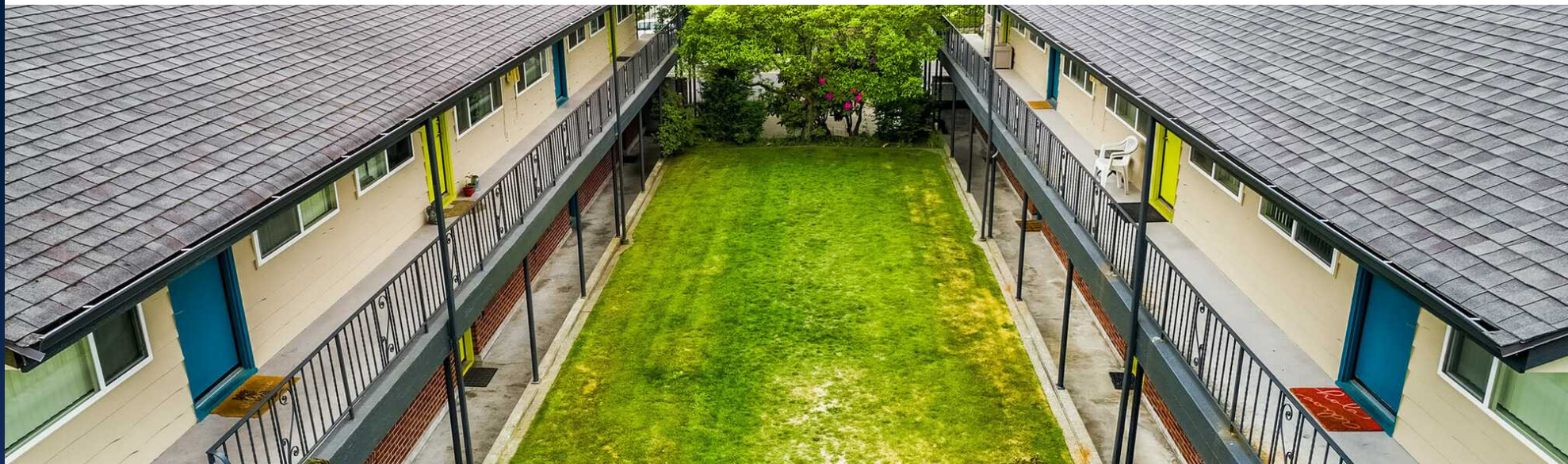


Ian Brown
PRINCIPAL/BROKER

206.999.5000
ian.brown@sperrycga.com
WA #48896



Property Summary



PROPERTY HIGHLIGHTS

- Rare opportunity to acquire a fully stabilized asset in a market with limited multifamily inventory
- Strong rental demand driven by West Seattle's growing popularity among families and young professionals
- Significant upside potential through modern in-unit updates
- Low maintenance design with newer windows and electrical service
- Well-maintained building grounds that enhance curb appeal
- Classic mid-century charm with modern finishes that attract quality tenants
- Priced below replacement cost
- Large Courtyard outdoor space that adds to the property's charm and desirability
- 9 off-street parking

OFFERING SUMMARY

| | |
|------------------|--------------|
| Sale Price: | \$3,395,000 |
| Number of Units: | 16 |
| Lot Size: | 11,500 SF |
| Building Size: | 9,048 SF |
| NOI: | \$189,252.56 |
| Actual Cap Rate: | 5.57% |
| \$/Per Unit: | \$212,187 |

Property Description



The Monterey Apartments offer a rare opportunity to acquire a 16-unit multifamily asset in the heart of West Seattle, just two blocks from the vibrant Junction on California Avenue. It is uncommon for a high-performing, stabilized property like this to become available in one of Seattle's most dynamic and sought-after neighborhoods.

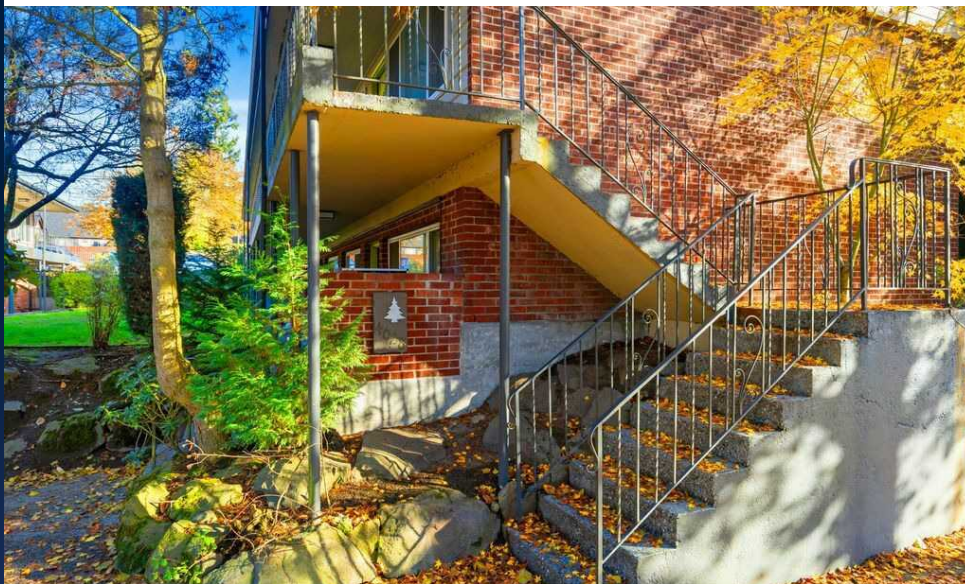
West Seattle continues to experience steady growth while maintaining the character and charm that make it one of the city's most desirable communities. The Monterey represents an opportunity to enter this competitive market for under \$220,000 per unit. The asset provides investors with strong in-place cash flow and the potential to add further value through the installation of in-unit washer and dryers.

Originally constructed in 1954, The Monterey Apartments have undergone extensive renovations. Most of the sixteen units have been thoughtfully updated with modern kitchens featuring quartz countertops, stylish backsplashes, laminate hardwood flooring, and stainless steel appliances. Bathrooms have been refreshed with new shower surrounds and updated flooring, while additional interior upgrades include new wall heaters and premium carpeting.

The exterior has also been significantly improved with a fresh, contemporary paint scheme, new entry doors, and updated wood siding at both the front and rear of the building. System upgrades include a new electrical main connection and a replaced sewer line.

The Monterey Apartments combine mid-century architecture with modern finishes and proven operational performance, offering an exceptional investment opportunity in one of Seattle's most enduring rental markets.

Property Highlights



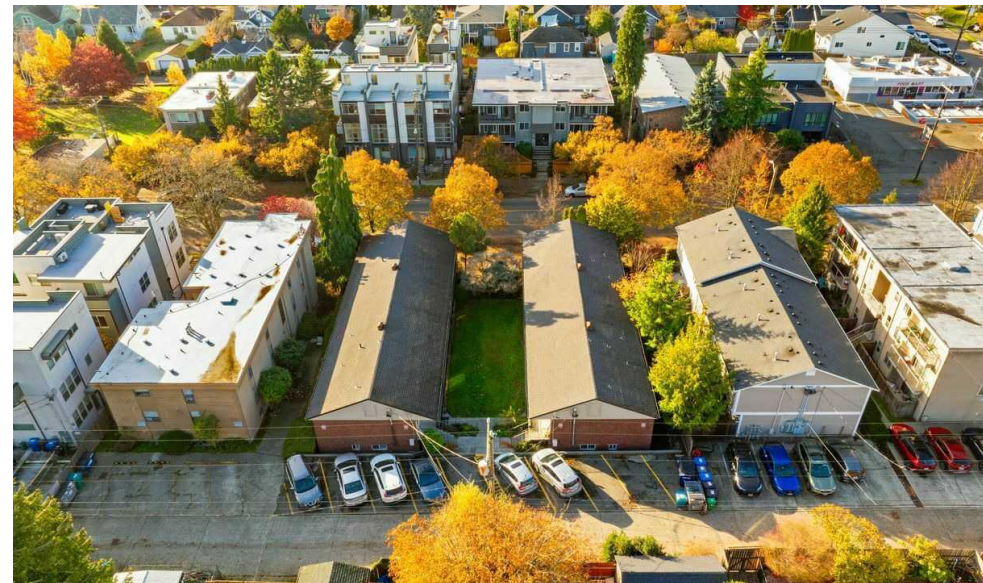
- Situated just two blocks from the vibrant Junction on California Avenue, one of the area's most popular residential and commercial corridors.
- Located in one of Seattle's most desirable neighborhoods, known for its strong community feel and growing demand for quality housing.
- Offers a rare opportunity to acquire a proven, high-performing asset with both stability and long-term value-add potential.
- Provides strong in-place cash flow with additional upside through renovating the remaining un-updated units or adding in-unit washer and dryer connections.
- Priced at under \$220,000 per unit, offering an attractive entry point into a competitive West Seattle submarket.
- Originally constructed in 1954, featuring durable mid-century architecture with recent substantial renovations.
- All but 1 of the apartments have been upgraded with modern kitchens, quartz countertops, stylish tile backsplashes, laminate hardwood flooring, and stainless steel appliances.
- Bathrooms have been refreshed with new shower surrounds and updated laminate flooring for a clean, contemporary look.
- Additional interior enhancements include new wall heaters and premium carpeting throughout the renovated units.
- Exterior improvements include a fresh, modern paint scheme, new doors, and updated wood siding at both the front and rear elevations.
- Key system upgrades include a new electrical main connection and a replaced sewer line, completed in 2018, ensuring long-term reliability.

Interior Photos

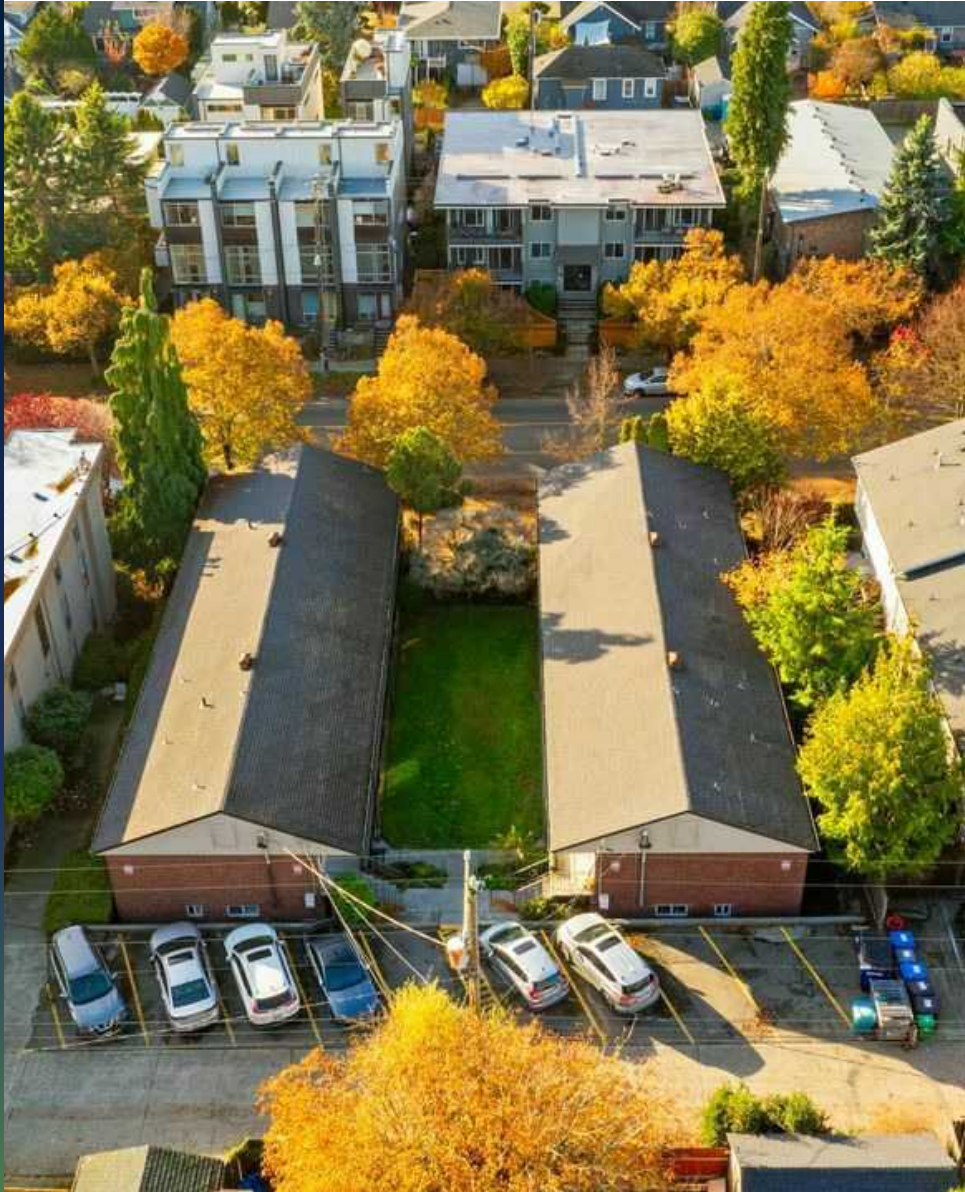


Building Photos

FOR SALE | MONTEREY COURT APARTMENTS



Financial Summary



INVESTMENT OVERVIEW

| | |
|----------------|-------------|
| Price | \$3,395,000 |
| Price per SF | \$375 |
| Price per Unit | \$212,188 |
| GRM | 12.19 |
| CAP Rate | 5.57% |

OPERATING DATA

| | |
|------------------------|-----------|
| Gross Scheduled Income | \$278,520 |
| Other Income | \$15,900 |
| Total Scheduled Income | \$294,420 |
| Vacancy Cost | \$8,833 |
| Gross Income | \$285,587 |
| Operating Expenses | \$96,335 |
| Net Operating Income | \$189,253 |

Income & Expenses



INCOME SUMMARY

| | |
|---------------------|------------------|
| Rental Income | \$278,520 |
| Laundry Income | \$2,640 |
| Utility Income | \$11,160 |
| Parking Income | \$2,100 |
| Vacancy Cost | (\$8,833) |
| GROSS INCOME | \$285,587 |

EXPENSES SUMMARY

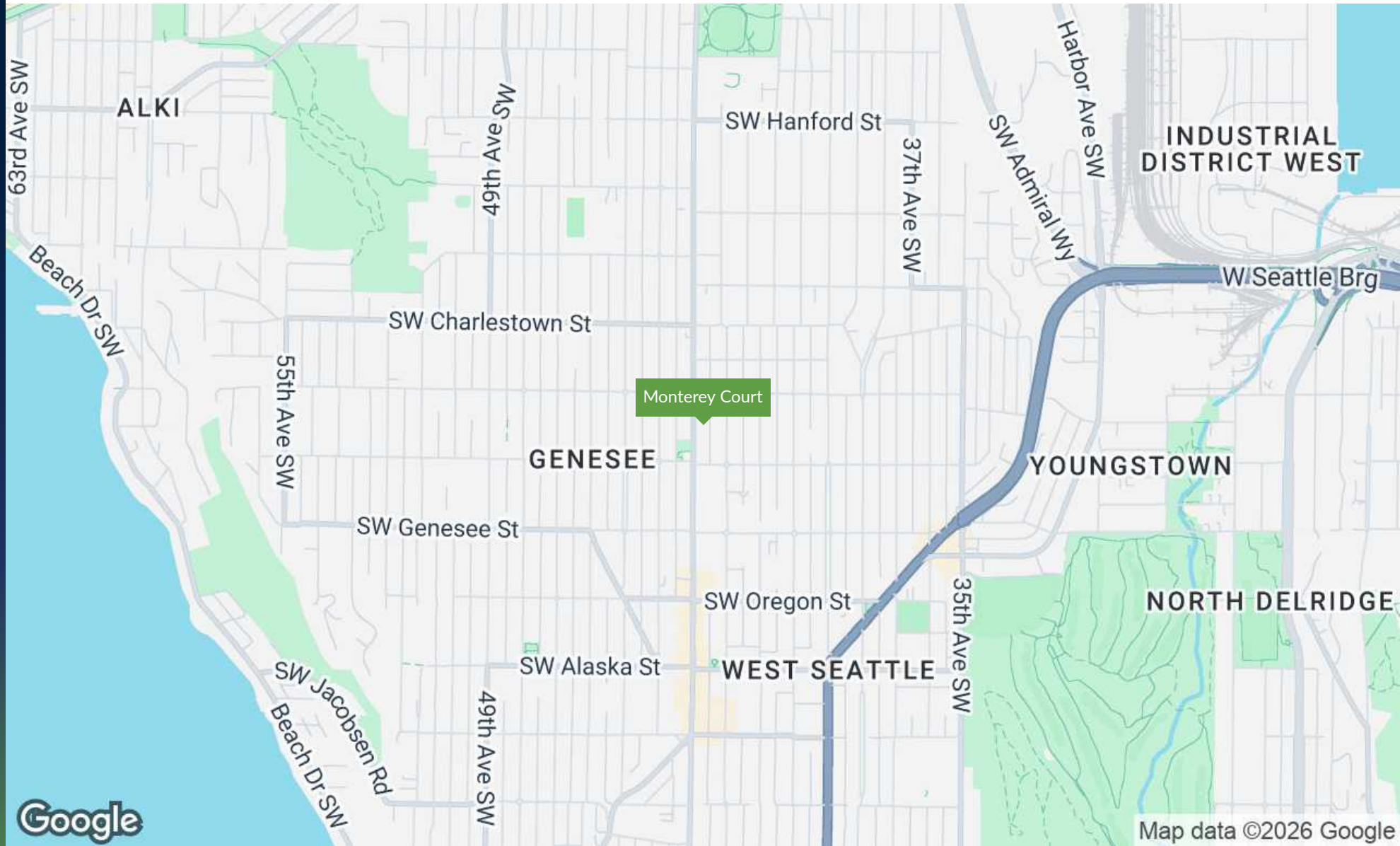
| | |
|--------------------------------|------------------|
| Insurance | \$11,902 |
| Property Taxes | \$37,076 |
| Electric | \$1,858 |
| Water, Sewer, and Garbage | \$14,737 |
| Landscape | \$3,300 |
| Repairs and Maintenance | \$14,000 |
| Property Management - Proforma | \$13,462 |
| OPERATING EXPENSES | \$96,335 |
| NET OPERATING INCOME | \$189,253 |

Rent Roll



| SUITE | BEDROOMS | RENT | MARKET RENT |
|-----------------|----------|-----------------|-----------------|
| 1 | 1 | \$1,375 | \$1,625 |
| 2 | 1 | \$1,370 | \$1,625 |
| 3 | 1 | \$1,465 | \$1,625 |
| 4 | 1 | \$1,565 | \$1,625 |
| 5 | 1 | \$1,525 | \$1,625 |
| 6 | 1 | \$1,415 | \$1,625 |
| 7 | 1 | \$1,565 | \$1,625 |
| 8 | 1 | \$1,385 | \$1,625 |
| 9 | 1 | \$1,415 | \$1,625 |
| 10 | 1 | \$1,565 | \$1,625 |
| 11 | 1 | \$1,375 | \$1,625 |
| 12 | 1 | \$1,350 | \$1,625 |
| 13 | 1 | \$1,475 | \$1,625 |
| 14 | 1 | \$1,550 | \$1,625 |
| 15 | 1 | \$1,425 | \$1,625 |
| 16 | 1 | \$1,390 | \$1,625 |
| TOTALS | | \$23,210 | \$26,000 |
| AVERAGES | | \$1,451 | \$1,625 |

Regional Map



SPERRY - CAPSTONE COMMERCIAL | 303 5TH AVENUE SOUTH, SUITE #209 | EDMONDS, WA 98020

We obtained the information above from sources we believe to be reliable. However, we have not verified its accuracy and make no guarantee, warranty or representation about it. It is submitted subject to the possibility of errors, omissions, change of price, rental or other conditions, prior sale, lease or financing, or withdrawal without notice. We include projections, opinions, assumptions or estimates for example only, and they may not represent current or future performance of the property. You and your tax and legal advisors should conduct your own investigation of the property and transaction.