

COVINGTON FULFILLMENT CENTER

27631 Covington Way SE | Covington, WA

19.74 ACRE SITE WITH MULTIPLE BTS OPTIONS
93,600 SF TO 25,000 SF BUILDINGS
AVAILABLE

Highway 18



EXCLUSIVELY MARKETING BY:

Arie Salomon, SIOR, CCIM
Principal
+1 425 586 5636
asalomon@nai-psp.com

Jeff Forsberg, CCIM
Principal
+1 425 586 5610
jforsberg@nai-psp.com

Connor Powell, SIOR, CCIM
Partner
+1 425 586 5642
cpowell@nai-psp.com

COVINGTON FULFILLMENT CENTER

Located just 6.4 miles from downtown Kent and conveniently positioned adjacent to Highway 18 with direct access to both I-90 and SR 167, the Covington site offers an unique opportunity to occupy a specialized building in the extremely competitive South King County Industrial Market.

Address	27631 Covington Way SE Covington, WA 98042
Lot Size	19.74 acres Ability to fence and secure entire site
Option 1	Bldg Size: 93,600 SF Loading: 32 DH & 2 GL Clearance: 32' Site Area: 19.74 acres
Option 2	Bldg Size: 93,600 SF Loading: 31 DH & 2 GL Clearance: 32' Site Area: 8.97 acres
Option 3	Bldg Size: 25,000 SF Loading: 14 DH & 2 GL Clearance: 32' Site Area: 10.77 acres
Visibility	Highway 18
Highlights	No local B&O tax, ESFR sprinkler system, 6" concrete slab, LEED certified, 52' x 60' typical column spacing
Available For Lease	Owner/user sale may be considered

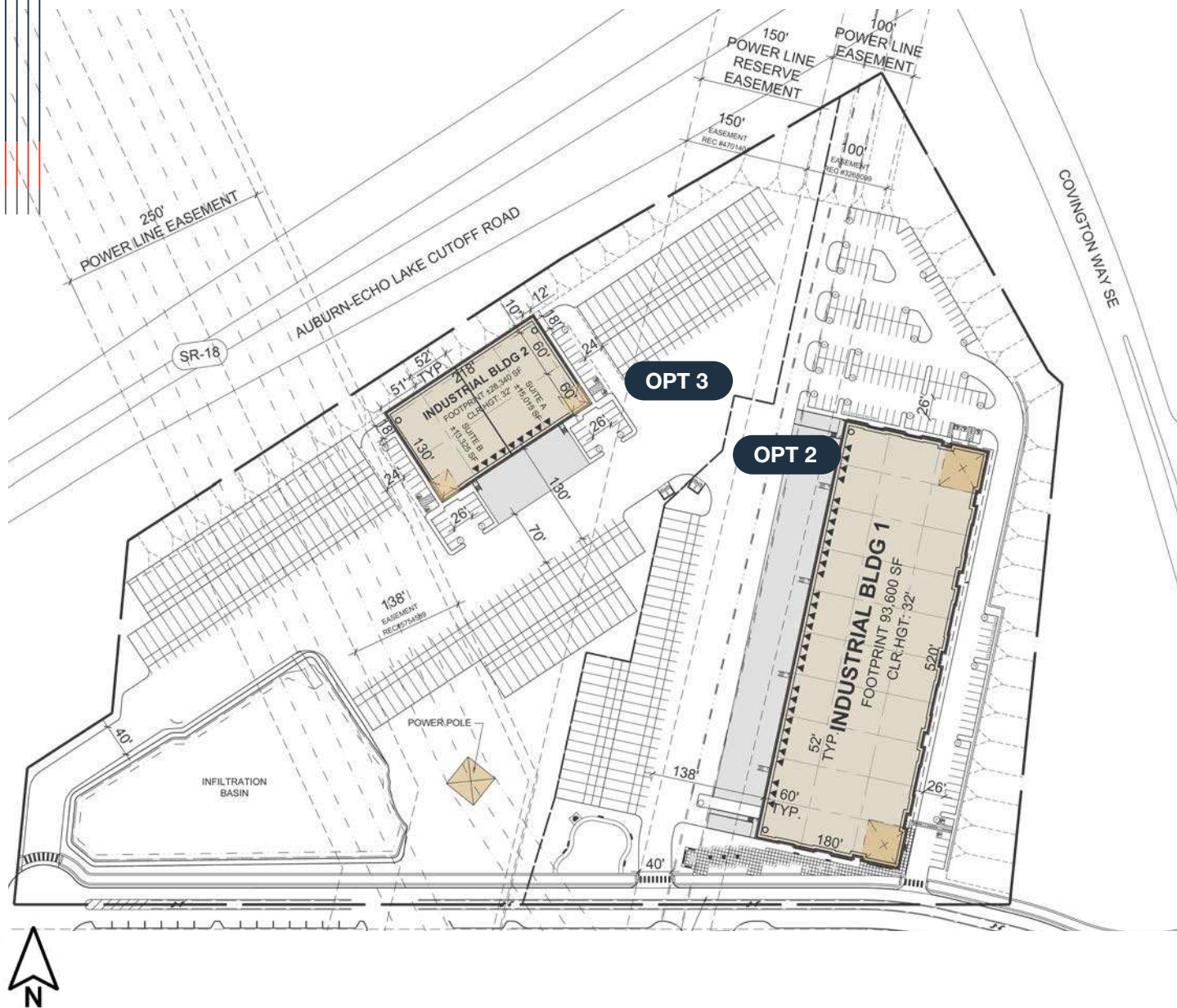


SITE PLAN: OPTION 1



THE INFORMATION CONTAINED HEREIN HAS BEEN GIVEN TO US BY THE OWNER OF THE PROPERTY OR OTHER SOURCES WE DEEM RELIABLE, WE HAVE NO REASON TO DOUBT ITS ACCURACY, BUT WE DO NOT GUARANTEE IT. ALL INFORMATION SHOULD BE VERIFIED PRIOR TO PURCHASE OR LEASE.

SITE PLAN: OPTION 2 & 3



THE INFORMATION CONTAINED HEREIN HAS BEEN GIVEN TO US BY THE OWNER OF THE PROPERTY OR OTHER SOURCES WE DEEM RELIABLE. WE HAVE NO REASON TO DOUBT ITS ACCURACY, BUT WE DO NOT GUARANTEE IT. ALL INFORMATION SHOULD BE VERIFIED PRIOR TO PURCHASE OR LEASE.

AREA OVERVIEW



Fred Meyer

COSTCO
WHOLESALE

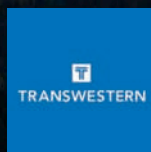
19.74
ACRES

East —
Highway 18
West —

→ INGRESS
← EGRESS

COVINGTON FULFILLMENT CENTER

OWNED BY:



EXCLUSIVELY MARKETED BY:



Arie Salomon, SIOR, CCIM
Principal
+1 425 586 5636
asalomon@nai-pp.com

Jeff Forsberg, CCIM
Principal
+1 425 586 5610
jforsberg@nai-pp.com

Connor Powell, SIOR, CCIM
Partner
+1 425 586 5642
cpowell@nai-pp.com

nai-pp.com