

29,628 SF

CLIMATE CONTROLLED INDUSTRIAL



FOR SALE OR LEASE
THERMOREGULATED WAREHOUSE



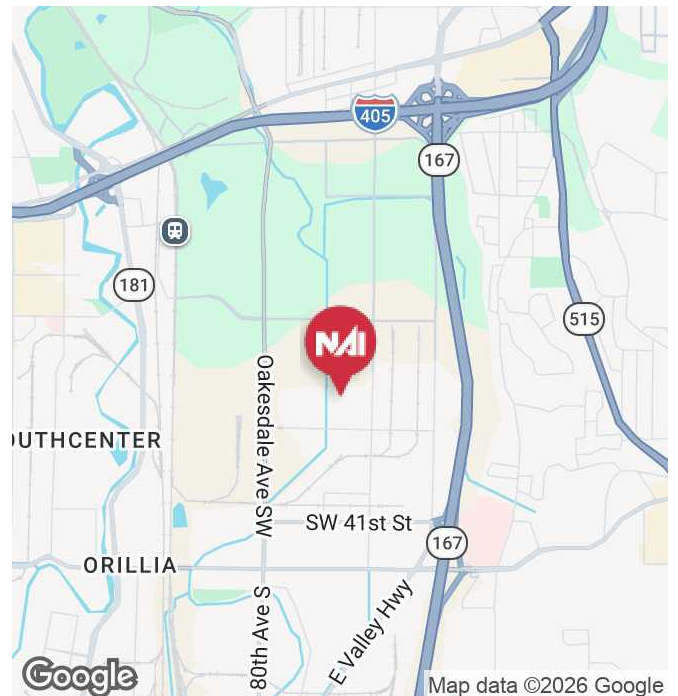
Oakesdale Commerce Center - E5

720 SW 34th St, Renton, WA 98057

Property Highlights

- 29,628 SF with 4,893 SF office (2,446 SF mezzanine)
- Temperature Controlled Facility; \$1,500,000 Est. Buildout Cost
- 5 DH & 1 GL (4 DH can be added - knock out panels in place)
- 24' Clear Height
- Stand-alone Building in High Image business park
- Retail showroom potential
- Available with 150 days notice
- Call for Rates
- Sale Price: \$10,300,000

Do not disturb tenant without booking a formal tour.



<https://www.nai-psp.com>

Jeff Forsberg, CCIM
Principal | 425.586.5610
jforsberg@nai-psp.com

Bret Matsysik, SIOR, CCIM
Partner | 425.586.5617
bmatsysik@nai-psp.com

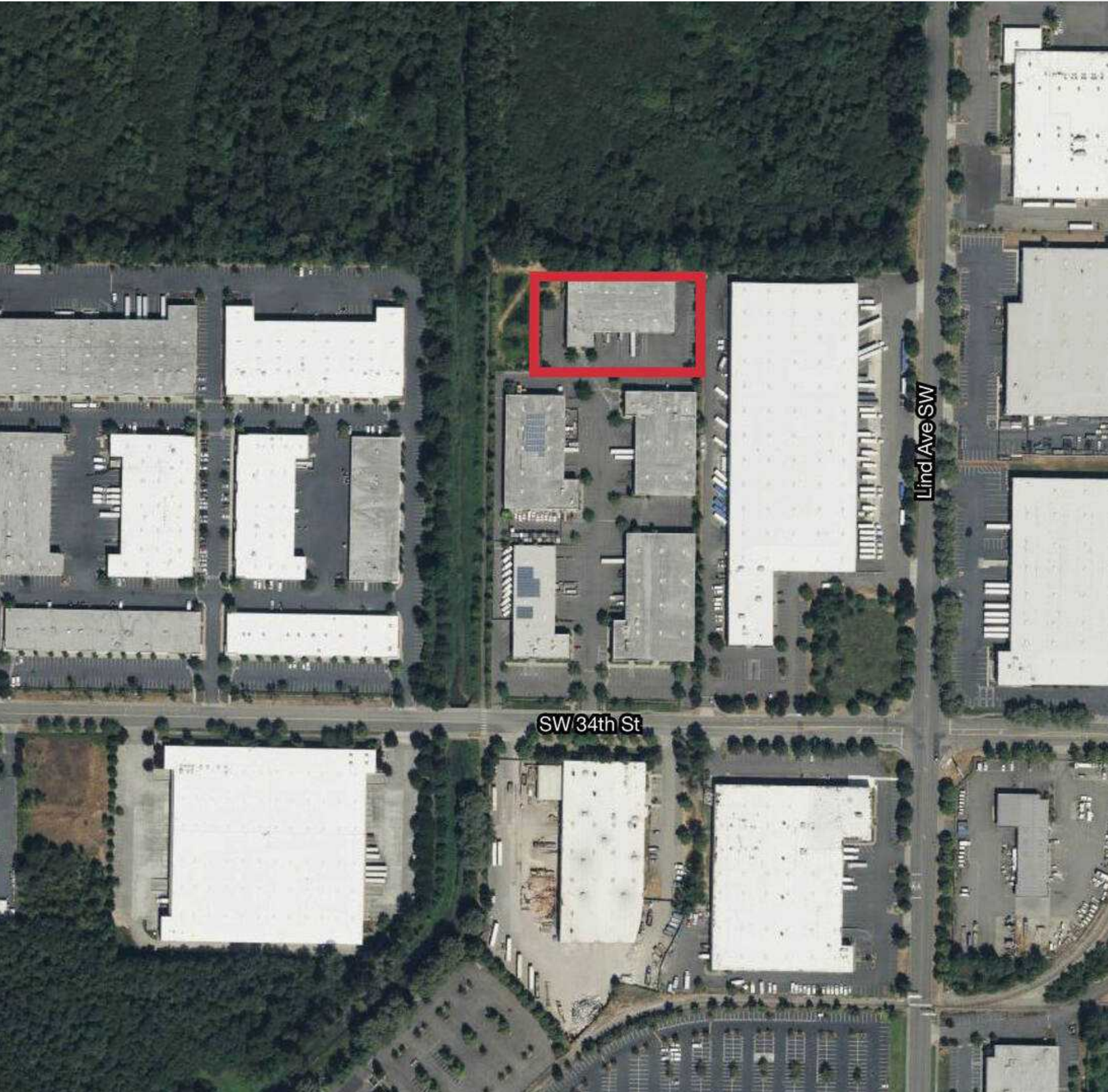
Arie Salomon, SIOR, CCIM
Principal | 425.586.5636
asalomon@nai-psp.com

NO WARRANTY, EXPRESS OR IMPLIED, IS MADE AS TO THE ACCURACY OF THE INFORMATION CONTAINED HEREIN. THIS INFORMATION IS SUBMITTED SUBJECT TO ERRORS, OMISSIONS, CHANGE OF PRICE, RENTAL OR OTHER CONDITIONS, WITHDRAWAL WITHOUT NOTICE, AND IS SUBJECT TO ANY SPECIAL LISTING CONDITIONS IMPOSED BY OUR PRINCIPALS. COOPERATING BROKERS, BUYERS, TENANTS AND OTHER PARTIES WHO RECEIVE THIS DOCUMENT SHOULD NOT RELY ON IT, BUT SHOULD USE IT AS A STARTING POINT OF ANALYSIS, AND SHOULD INDEPENDENTLY CONFIRM THE ACCURACY OF THE INFORMATION CONTAINED HEREIN THROUGH A DUE DILIGENCE REVIEW OF THE BOOKS, RECORDS, FILES AND DOCUMENTS THAT CONSTITUTE RELIABLE SOURCES OF THE INFORMATION DESCRIBED HEREIN. LOGOS ARE FOR IDENTIFICATION PURPOSES ONLY AND MAY BE TRADEMARKS OF THEIR RESPECTIVE COMPANIES.

29,628 SF
CLIMATE CONTROLLED INDUSTRIAL



FOR SALE OR LEASE
THERMOREGULATED WAREHOUSE



<https://www.nai-psp.com>

Jeff Forsberg, CCIM
Principal | 425.586.5610
jforsberg@nai-psp.com

Bret Matsysik, SIOR, CCIM
Partner | 425.586.5617
bmatsysik@nai-psp.com

Arie Salomon, SIOR, CCIM
Principal | 425.586.5636
asalomon@nai-psp.com

NO WARRANTY, EXPRESS OR IMPLIED, IS MADE AS TO THE ACCURACY OF THE INFORMATION CONTAINED HEREIN. THIS INFORMATION IS SUBMITTED SUBJECT TO ERRORS, OMISSIONS, CHANGE OF PRICE, RENTAL OR OTHER CONDITIONS, WITHDRAWAL WITHOUT NOTICE, AND IS SUBJECT TO ANY SPECIAL LISTING CONDITIONS IMPOSED BY OUR PRINCIPALS. COOPERATING BROKERS, BUYERS, TENANTS AND OTHER PARTIES WHO RECEIVE THIS DOCUMENT SHOULD NOT RELY ON IT, BUT SHOULD USE IT AS A STARTING POINT OF ANALYSIS, AND SHOULD INDEPENDENTLY CONFIRM THE ACCURACY OF THE INFORMATION CONTAINED HEREIN THROUGH A DUE DILIGENCE REVIEW OF THE BOOKS, RECORDS, FILES AND DOCUMENTS THAT CONSTITUTE RELIABLE SOURCES OF THE INFORMATION DESCRIBED HEREIN. LOGOS ARE FOR IDENTIFICATION PURPOSES ONLY AND MAY BE TRADEMARKS OF THEIR RESPECTIVE COMPANIES.