

# SQUALICUM LOFT SPACE

FRONT ROW COMMERCIAL CONDO W/ FOUR PARKING SPACES

905 SQUALICUM WAY #106, BELLINGHAM WA 98225



**FOR SALE**  
**\$629,900**

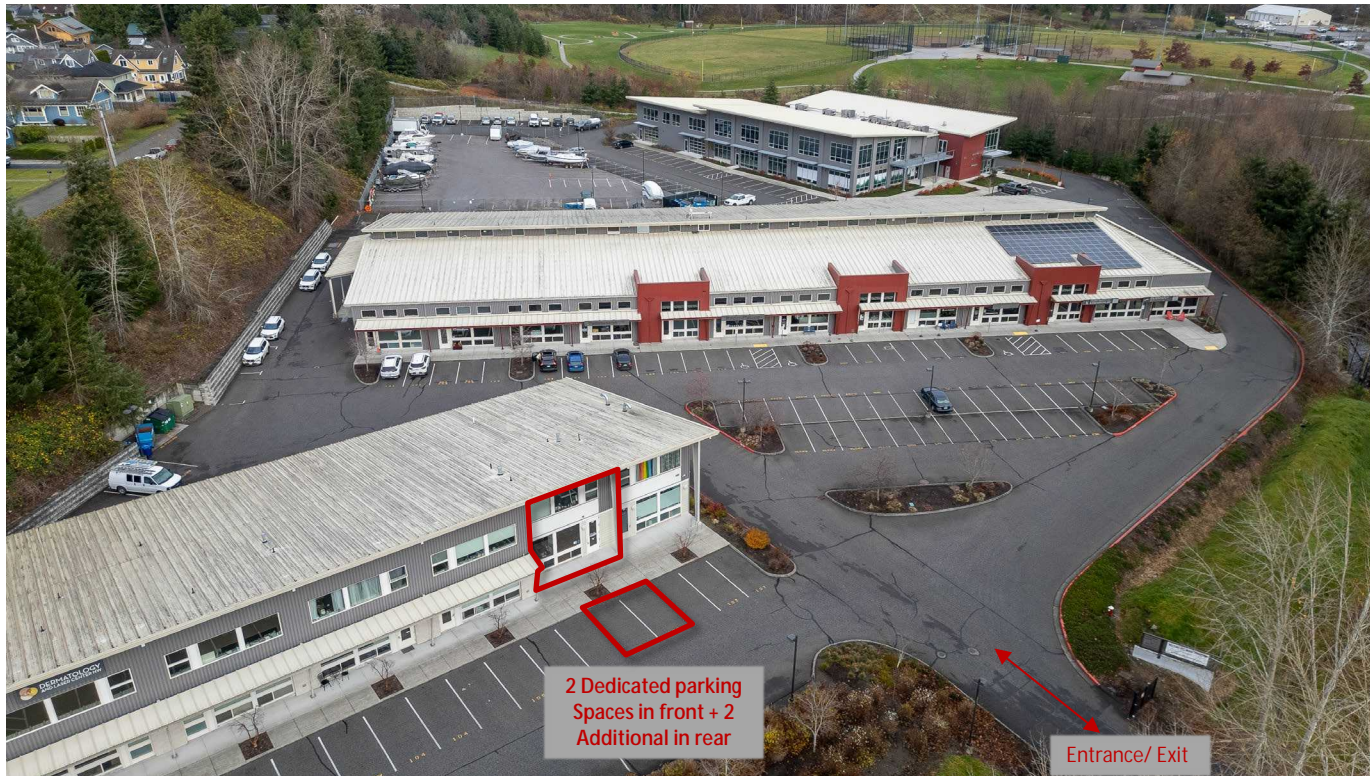
- 1,829 SF
- CURRENTLY DENTAL LAB - HIGH QUALITY BUILD OUT
- 4 DEDICATED PARKING SPACES



# PROPERTY SUMMARY

## 905 SQUALICUM WAY #106

Commercial Condo located within the Squalicum Lofts Business Park. Located at the forefront of the complex, with excellent signage exposure to Squalicum Way. Space features 1,826 SF, currently built out as a Dental lab with reception/ waiting area, 3 operatory spaces, Lab, restroom + office on ground floor, and Processing lab space on second floor. 4 dedicated parking spaces (2 front + 2 rear). Easily accessible to I-5. Walking trails and Squalicum Creek Park adjacent to the east of the complex. Space is part of the Squalicum Lofts Condo Association.



## PROPERTY OVERVIEW

**Address:** 905 Squalicum Way #106, Bellingham WA

**APN:** 3802241151960006

**Total SF:** 1,829

**Year Built:** 2010

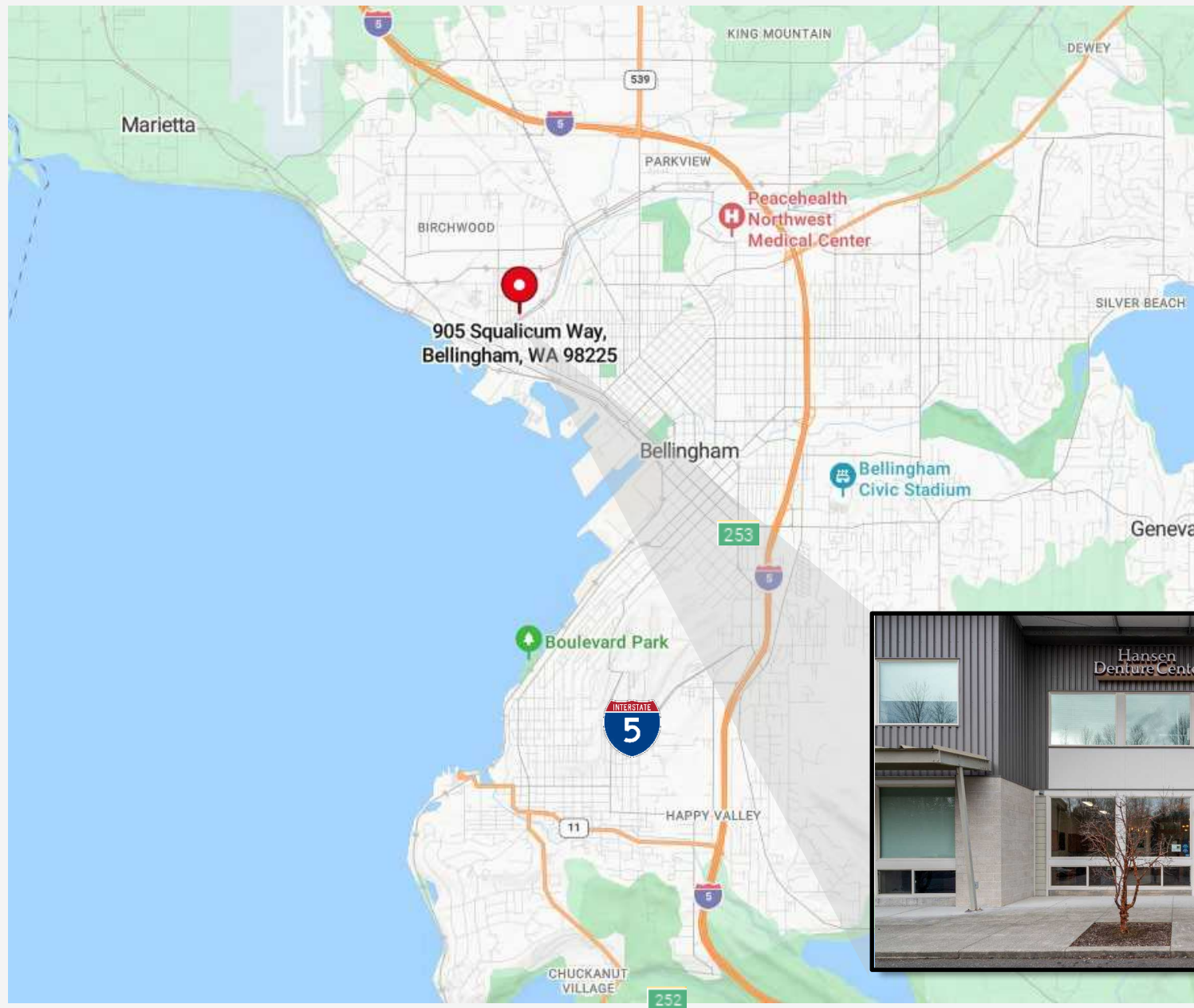
**Market:** Bellingham

**HVAC:** Mini Split

**3D Walkthrough:**

<https://my.matterport.com/show/?m=xvSewqu79yw>

# MAP





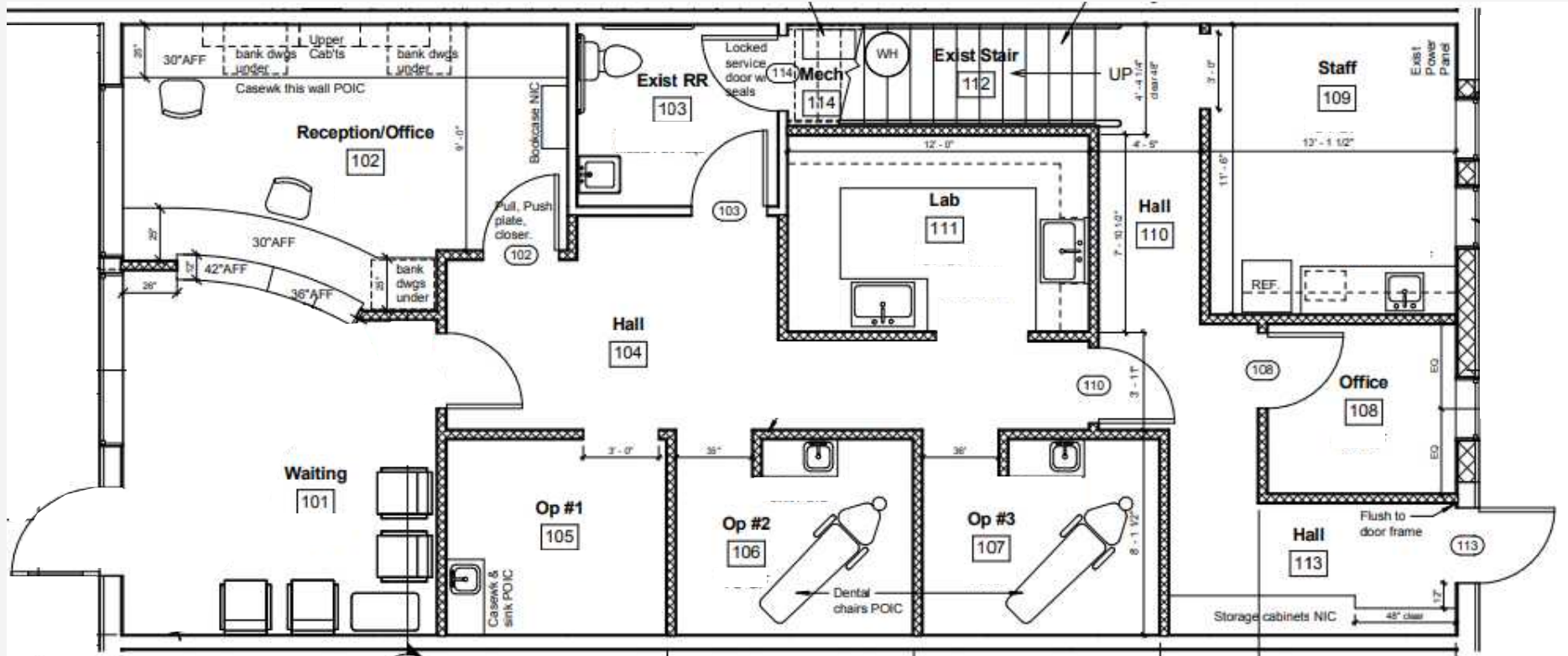
# **SITE PLAN & FLOOR PLANS**

---

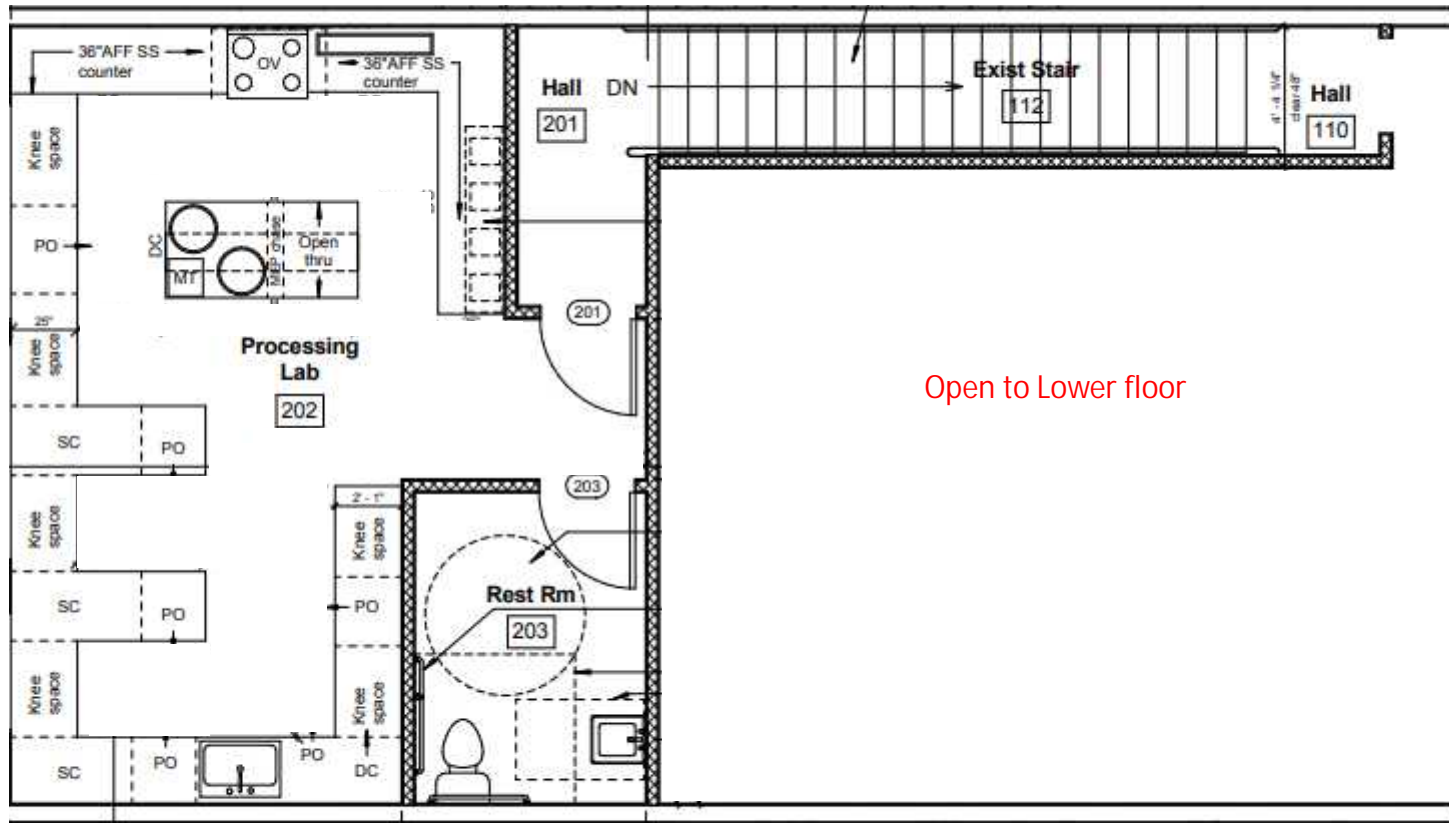
# FLOOR PLAN - GROUND FLOOR

## 3D Walkthrough:

<https://my.matterport.com/show/?m=xvSewqu79yw>



# FLOOR PLAN - SECOND FLOOR

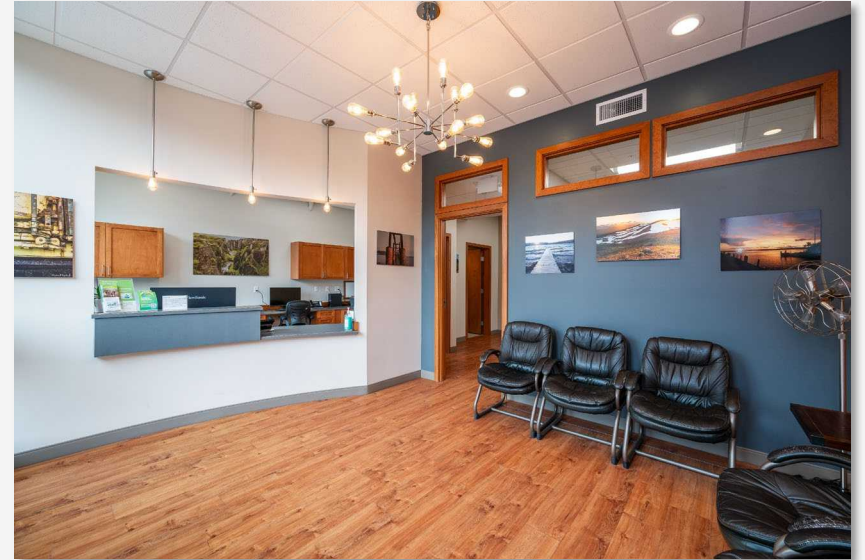




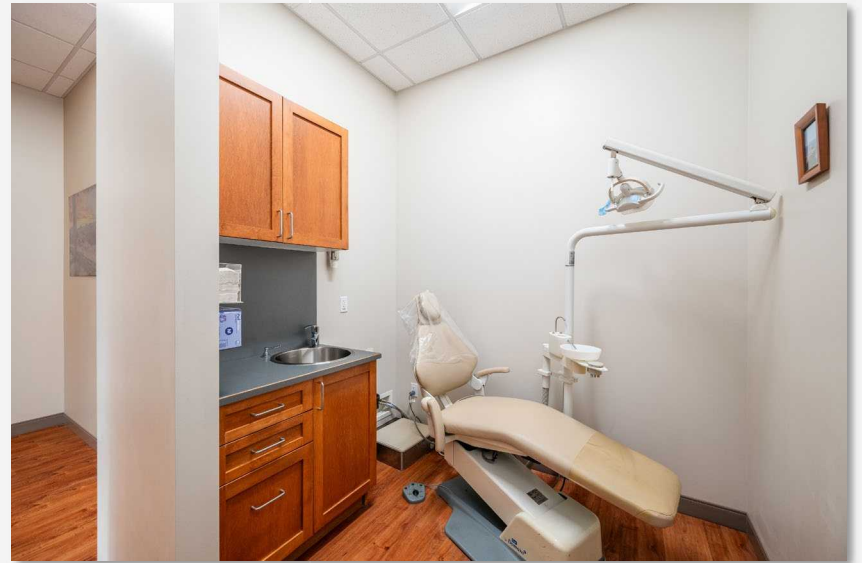
**PROPERTY PHOTOS**

---

# PHOTOS



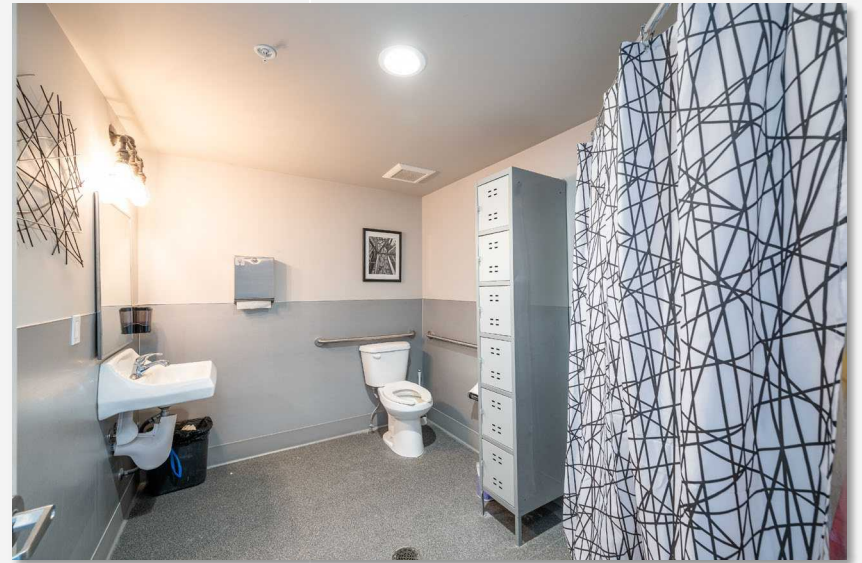
# PHOTOS



# PHOTOS



# PHOTOS





FOR MORE INFORMATION

PLEASE CONTACT:

TRACY CARPENTER

GAGE COMMERCIAL REAL ESTATE, LLC.

BROKER/OWNER

360.303.2608

TRACY@GAGECRE.COM

GREG MARTINEAU, CCIM

GAGE COMMERCIAL REAL ESTATE, LLC.

BROKER/OWNER

360.820.4645

GREG@GAGECRE.COM