

FOR SALE

505 PUYALLUP AVE BLOCK ASSEMBLAGE

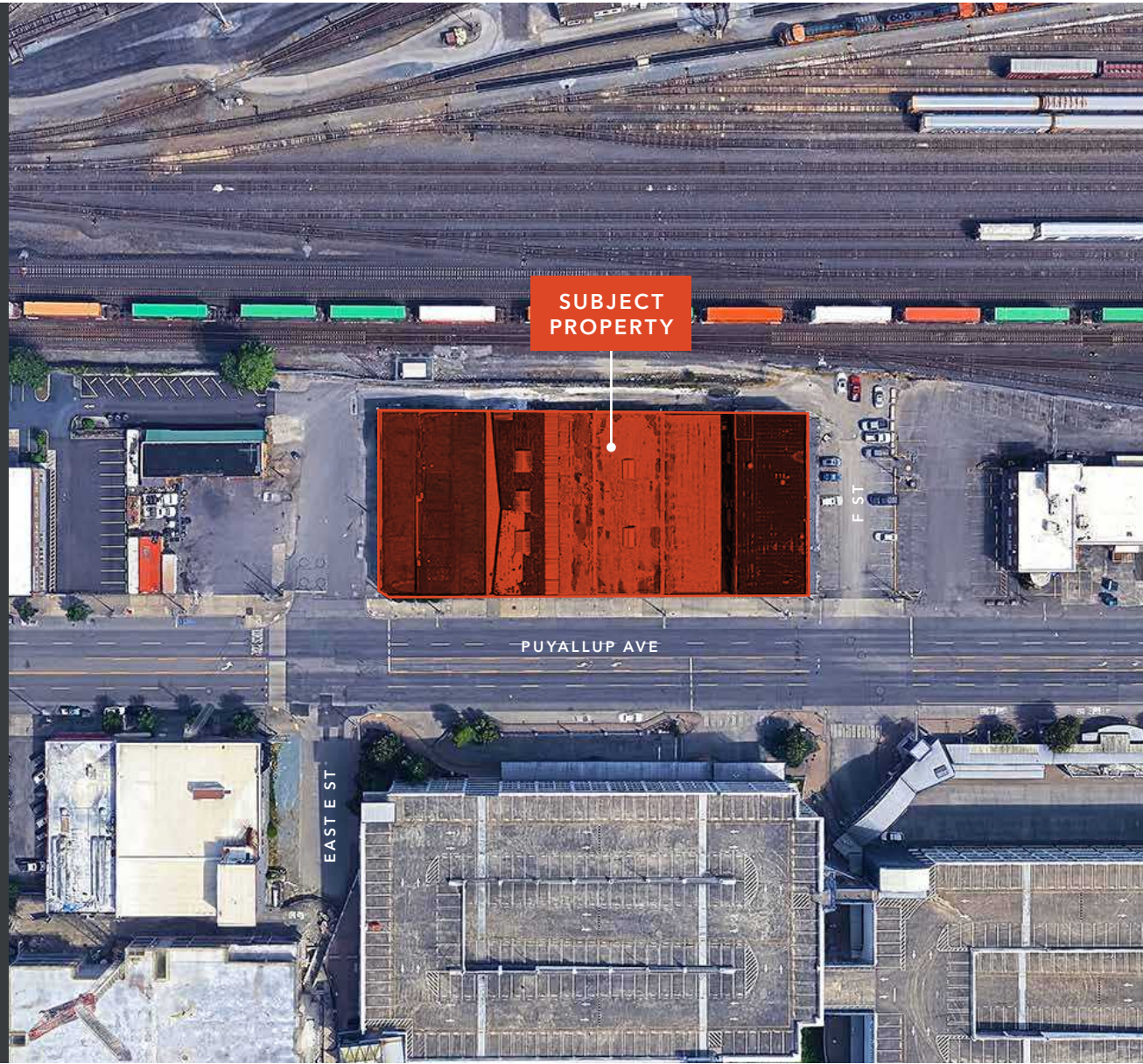
Owner User/Redevelopment Opportunity

505 PUYALLUP AVE, TACOMA, WA 98421



PROPERTY FEATURES

LAND AC	0.97 AC
LAND SF	42,253 SF
BUILDING SF	<ul style="list-style-type: none">• Bldg 1: 16,950 SF (9,750 SF first floor & 7,200 SF basement)• Bldg 2: 6,500 SF• Bldg 3 & 4: 13,000 SF with small yard• Bldg 5: 13,000 SF
GRADE LEVEL DOORS	Multiple GL doors
ZONING USE	Downtown Mixed Use → ZONING USE
ZONING MUNICIPALITY	City of Tacoma
FEATURES	<ul style="list-style-type: none">• Puyallup Ave frontage• Ample Loading• Excellent access to the Light Rail
PRICE	Call brokers for more information





UW TACOMA

SUBJECT PROPERTY

LIGHT RAIL STATION

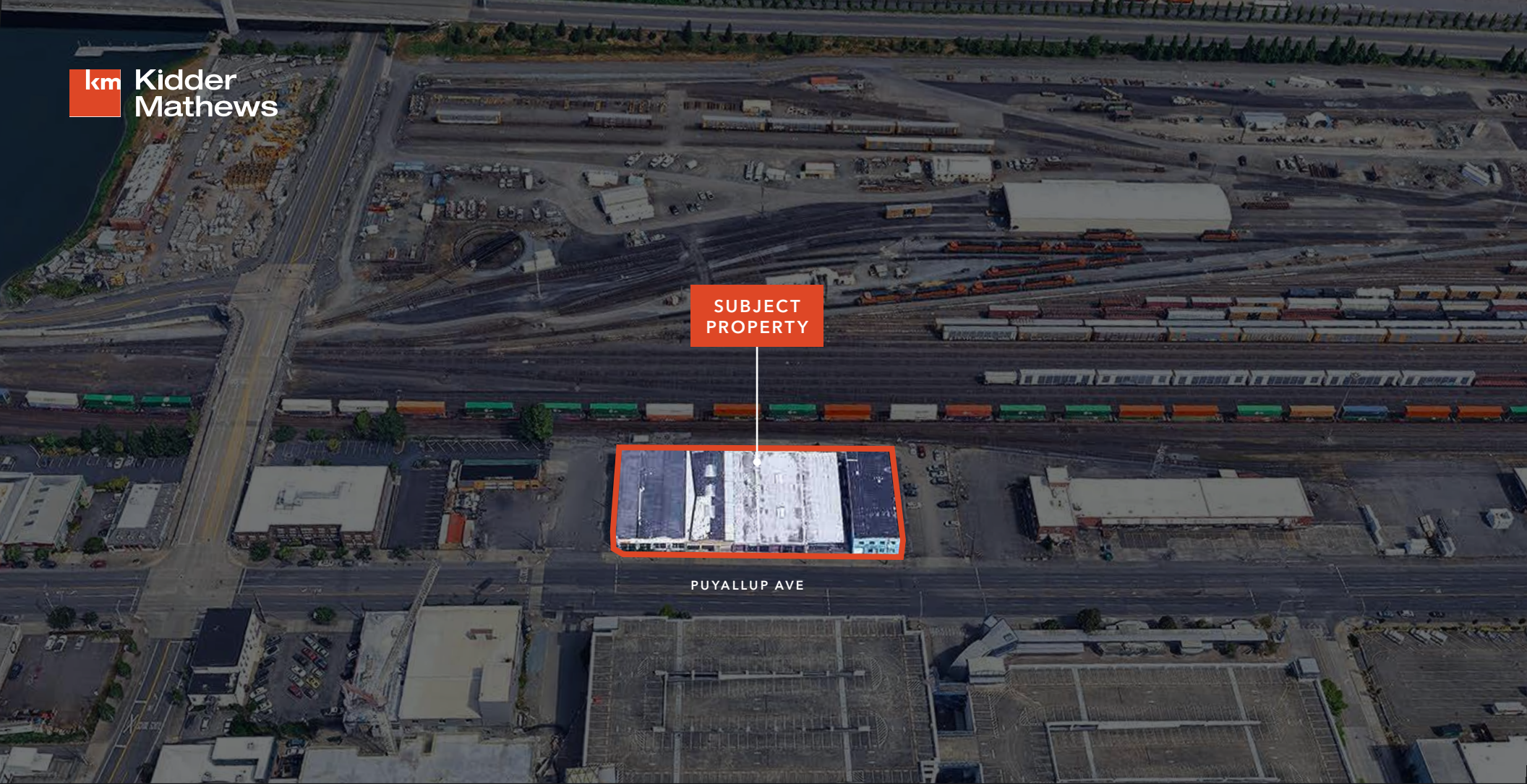
TACOMA DOME

2 MIN
TO TACOMA LIGHT
RAIL STATION

4 MIN
TO UW TACOMA

4 MIN
TO I-705

4 MIN
TO I-5



SUBJECT
PROPERTY

PUYALLUP AVE

Exclusively listed by

CHRIS TRUSSEL

Vice President

253.722.1467

chris.trussel@kidder.com

RYAN KERSHAW

Associate

206.949.1334

ryan.kershaw@kidder.com

KIDDER.COM