

FOR SALE

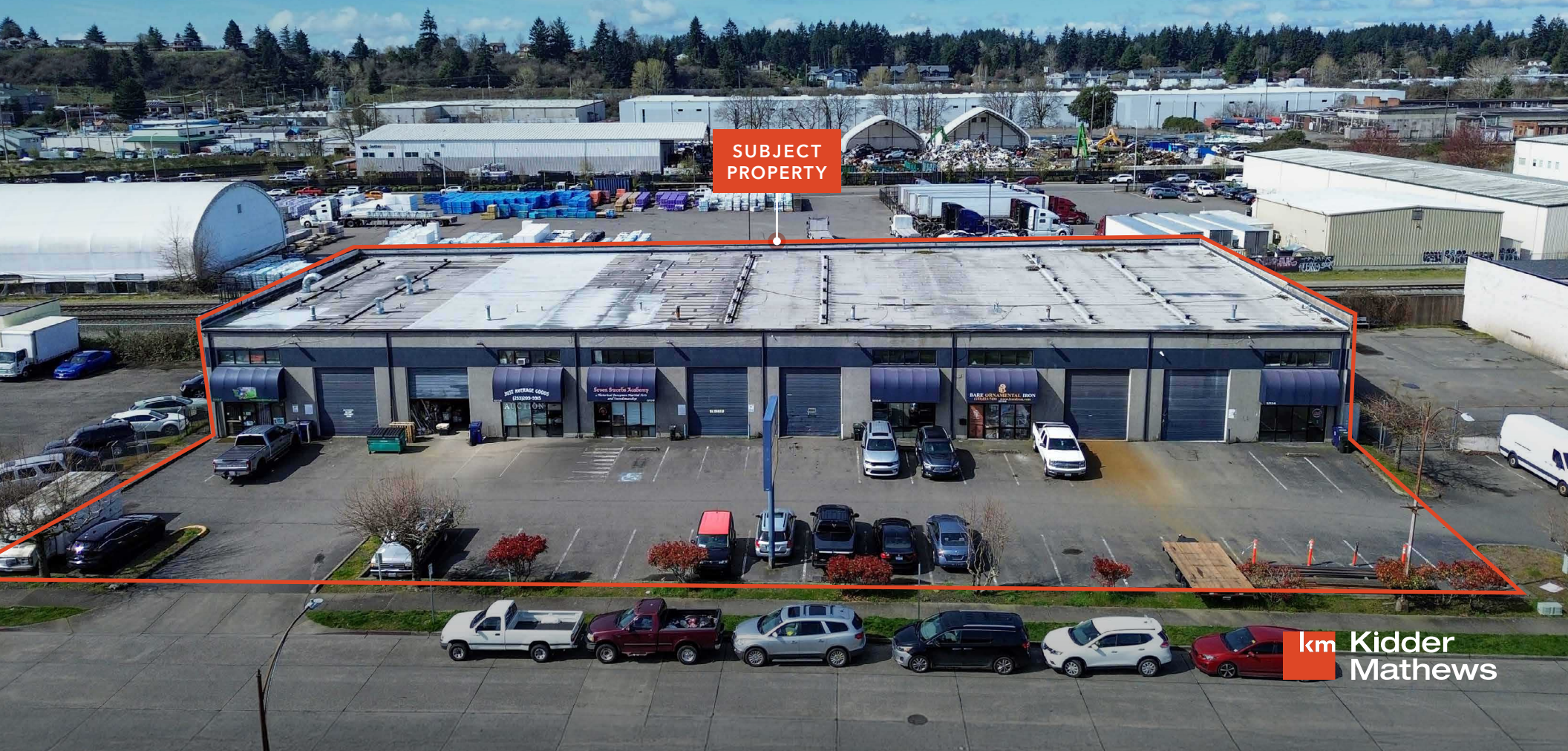
RAINSTATE BUILDING

*20,176 SF Small Bay Multi-tenant
Industrial Building*

\$2,595,000
SALE PRICE

5212 S WASHINGTON ST, TACOMA, WA 98409

→ VIEW PHOTOS



SUBJECT
PROPERTY

km Kidder
Mathews

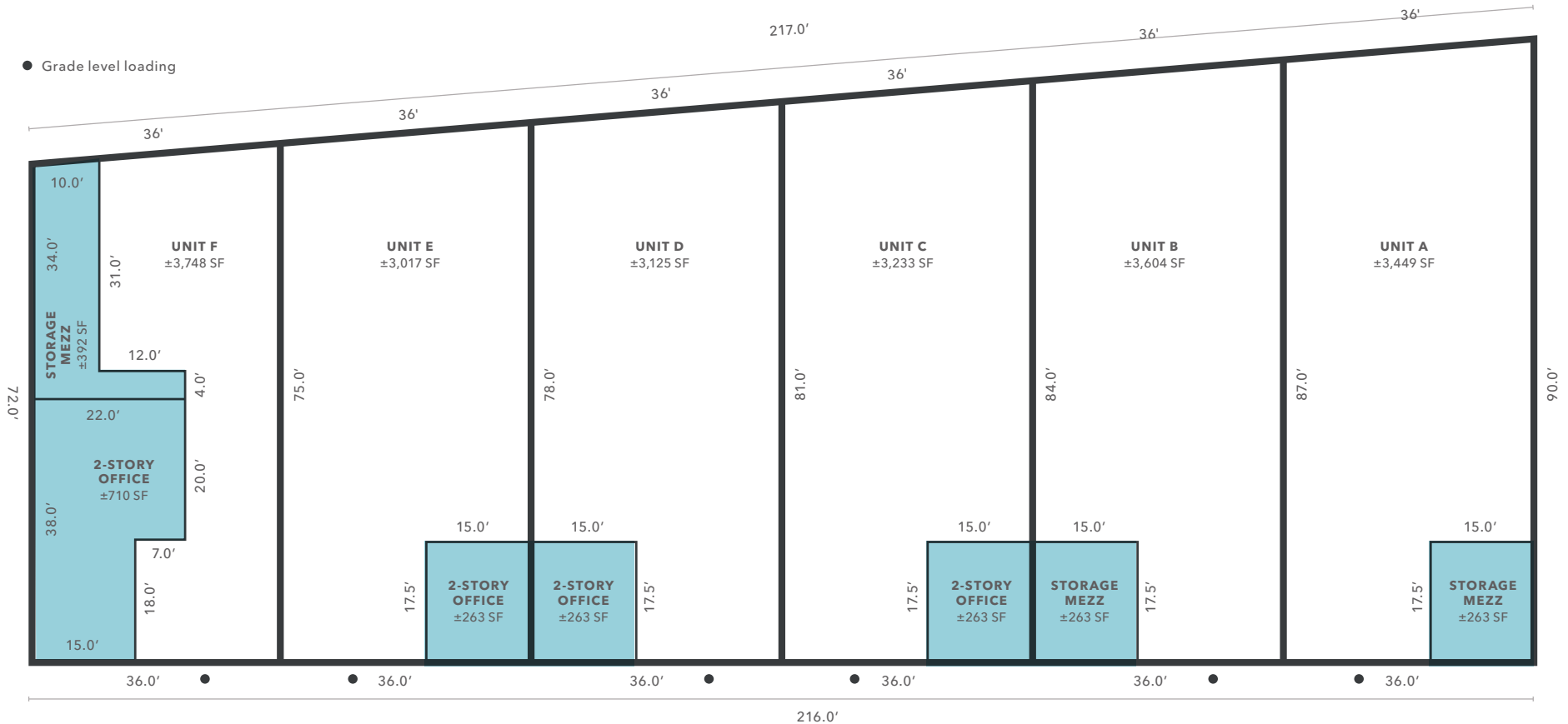
PROPERTY OVERVIEW

BUILDING SIZE	±20,176 SF Small Bay Multi-tenant
LAND	0.67 AC
% LEASED	81.12%
TRUCK ACCESS	Six (6) 12x14' Grade-Level Doors
CLEAR HEIGHT	20'
JURISDICTION	City of Tacoma
ZONE	CIX-STGPD VIEW ZONING MAP



SUITE AVAILABILITY

Suite	Tenant	Shell	1st Floor Office	Office Mezzanine	Storage Mezzanine	Total
Suite A	Idea Deal Services	3,186	±263	-	±263	3,449
Suite B	Bare Ornamental Iron	3,341	±263	-	±263	3,604
Suite C	Shining Auto Detailing	2,970	±263	±263	-	3,233
Suite D	Seven Swords Academy	2,862	±263	±263	-	3,125
Suite E	Just Average Goods	2,754	±263	±263	-	3,017
Suite F	Vacant	2,646	±710	±710	±392	3,748
TOTALS		17,759	±2,025	±1,499	±918	20,176



RENT ROLL

Tenant Name	Suite #	SF	Lease Expiration	Current Base Rent	Base Rent PSF	Annual Base Rent	NNN (Actual)	Adjusted Base Rent Annual (NOI)	
IDEN DEALER SERVICES LLC	A	3,449	MTM	\$2,800.00	\$0.81	\$33,600.00	(\$8,148.39)	\$25,451.61	
BARE ORNAMENTAL IRON LLC	B	3,604	MTM	\$2,600.00	\$0.78	\$31,200.00	(\$7,893.23)	\$23,306.77	
SHINING AUTO DETAILING INC.	C	3,233	12/31/2026	\$3,650.00	\$1.13	\$43,800.00	(\$7,638.08)	\$36,161.92	
SEVEN SWORDS ACADEMY LLC	D	3,125	MTM	\$2,500.00	\$0.80	\$30,000.00	(\$7,382.93)	\$22,617.07	
JUST AVERAGE GOODS	E	3,017	MTM	\$2,400.00	\$0.80	\$28,800.00	(\$7,127.77)	\$21,672.23	
VACANT	F	3,748	N/A	\$-	\$-	\$-	(\$8,854.79)	(\$8,854.79)	
		20,176		\$13,950.00	\$0.69	\$167,400.00	(\$47,045.19)	\$120,354.81	
								PURCHASE PRICE	\$2,595,000.00
								CAP RATE @ PURCHASE PRICE	4.64%

*All existing leases are gross leases with no NNN recapture

PROFORMA RENT ROLL

Suite #	SF	Base Rent PSF	Monthly Base Rent	Annual Base Rent	NNN (Actual)	NNN Recapture (Annual)	Adjusted Base Rent Annual (NOI)	
A	3,449	\$1.25	\$4,311.25	\$51,735.00	(\$8,148.39)	\$8,148.39	\$51,735.00	
B	3,604	\$1.25	\$4,505.00	\$54,060.00	(\$7,893.23)	\$7,893.23	\$54,060.00	
C	3,233	\$1.25	\$4,041.25	\$48,495.00	(\$7,638.08)	\$7,638.08	\$48,495.00	
D	3,125	\$1.25	\$3,906.25	\$46,875.00	(\$7,382.93)	\$7,382.93	\$46,875.00	
E	3,017	\$1.25	\$3,771.25	\$45,255.00	(\$7,127.77)	\$7,127.77	\$45,255.00	
F	3,748	\$1.25	\$4,685.00	\$56,220.00	(\$8,854.79)	\$8,854.79	\$56,220.00	
		20,176	\$25,220.00	\$302,640.00	(\$47,045.19)	\$47,045.19	\$302,640	
							PURCHASE PRICE	\$2,595,000.00
							CAPITAL IMPROVEMENTS	\$886,565.00
							TOTAL ACQUISITION COST	\$3,481,565.00
							CAP RATE @ TOTAL BASIS	8.69%

CAPITAL IMPROVEMENTS BUDGET

	Cost	\$/PSF
ROOF REPLACEMENT	\$391,565.00	\$19.41
GENERAL BUILDING REPAIRS	\$400,000.00	\$19.83
LEASING COSTS	\$95,000.00	\$4.71
	\$886,565.00	\$43.94

RAINSTATE BUILDING | 5212 S WASHINGTON ST

1.2 MI — 4 MINS

TO I-5

8 MI — 16 MINS

TO PORT OF TACOMA

4.9 MI — 8 MINS

TO HWY 512

12.9 MI — 16 MINS

TO HWY 18

23.9 MI — 30 MINS

TO SEATAC

37.9 MI — 45 MINS

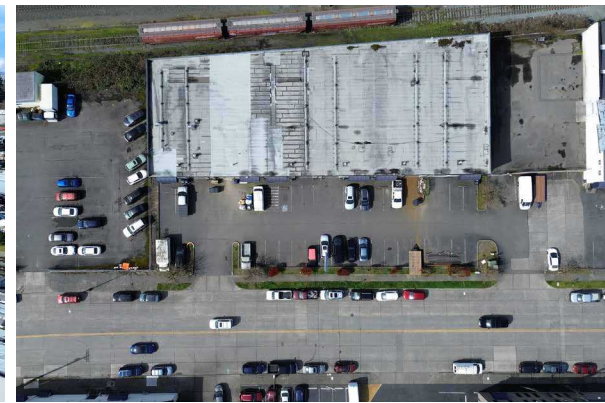
TO PORT OF SEATTLE



RAINSTATE BUILDING | 5212 S WASHINGTON ST

The Rainstate Building presents a rare opportunity to acquire a well-positioned small bay industrial asset in the heart of Tacoma's established industrial corridor. With five existing tenants and a clear path to significantly increased income through traditional value-add practices, this 20,176 SF building offers both immediate cash flow and strong value-add upside.

The property's 12 x 14 grade-level doors, 20-foot clear heights, and flexible multi-tenant layout make it ideally suited for a diverse range of light industrial and service users. Strategically located just minutes from I-5, Highway 16, and the Port of Tacoma, the Rainstate Building provides tenants with unmatched regional connectivity throughout the Puget Sound.





RAINSTATE BUILDING | 5212 S WASHINGTON ST

*For more information on
this property, please contact*

MATT MCLENNAN, SIOR, CCIM
Executive Vice President
253.722.1458
matt.mclennan@kidd.com

KIDDER.COM

This information supplied herein is from sources we deem reliable. It is provided without any representation, warranty, or guarantee, expressed or implied as to its accuracy. Prospective Buyer or Tenant should conduct an independent investigation and verification of all matters deemed to be material, including, but not limited to, statements of income and expenses. Consult your attorney, accountant, or other professional advisor. All Kidder Mathews designs are the sole property of Kidder Mathews. Branded materials and layouts are not authorized for use by any other firm or person.

