

FOR SALE

CLARK BUILDING

*Rare North Creek Bothell User
Building with Surplus Parking
Lot For Sale*

3700 MONTE VILLA PKWY, BOTHELL, WA

KIDDER.COM

 **Kidder
Mathews**

CLARK BUILDING



*±65,000 SF building with a
1.78 AC surplus parking lot with
proximity to HWY 522 and I-405*

YEAR BUILT	1997
TOTAL BUILDING SF	±65,000
PARCELS	00813300000800, 00813300000900
LOT SIZE	4.27 AC (Building lot) 1.78 AC (Surplus parking)
MAIN LOT PARKING	229 stalls (3.54/1,000 SF)
SURPLUS PARKING	178 stalls

\$15M

SALE PRICE
FOR BUILDING

\$3M

SALE PRICE FOR
SURPLUS PARKING LOT

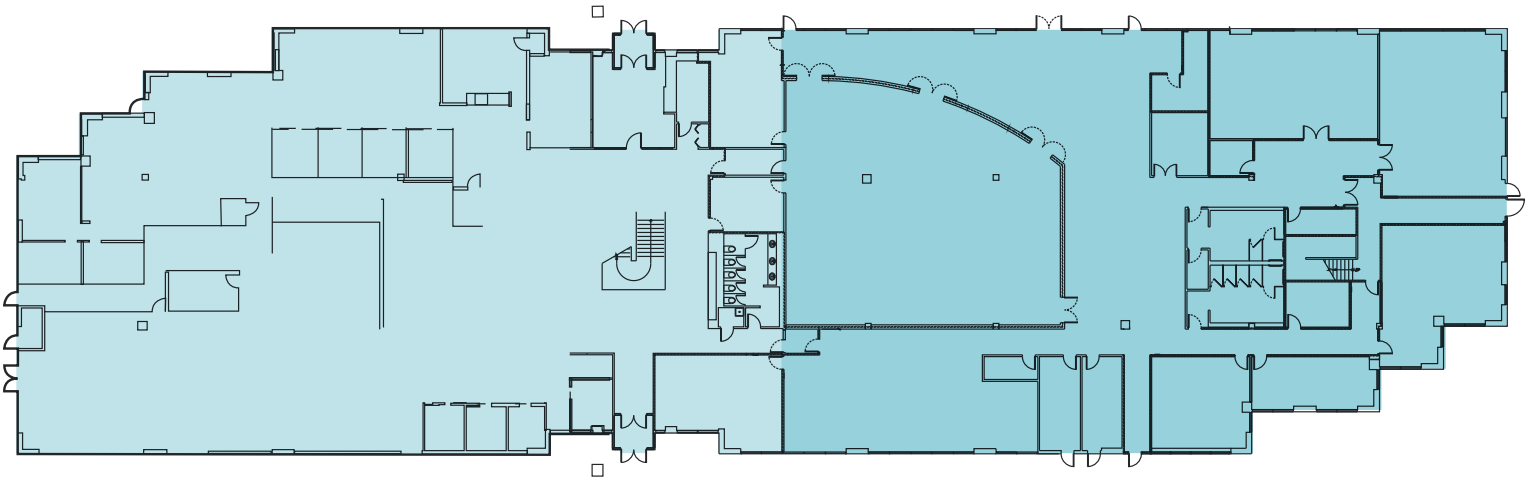
FIRST FLOOR PLAN

31,474 SF

TOTAL FLOOR

17,000 SF

CHURCH BUILD-OUT



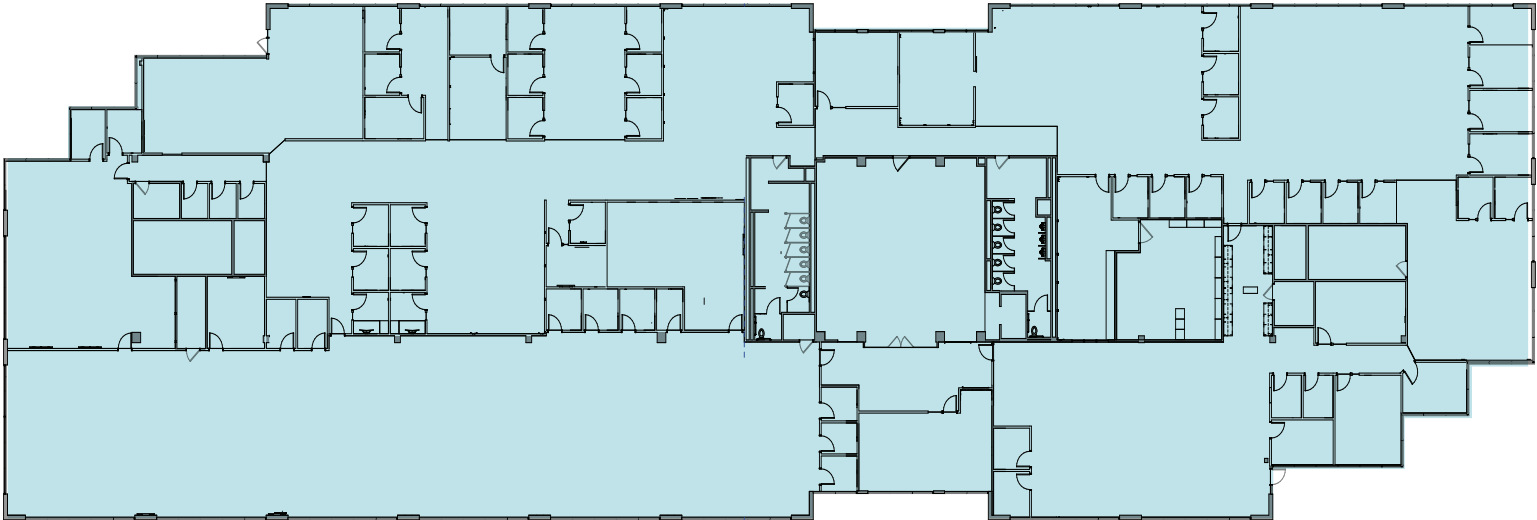
Office Church Build-out



SECOND FLOOR PLAN

33,526 SF

FORMER CALL CENTER



Office



CLARK BUILDING



HIGHLY- ACCESSIBLE LOCATION

Conveniently located near major
confluences Interstate 405, Highway
522, and Highway 524

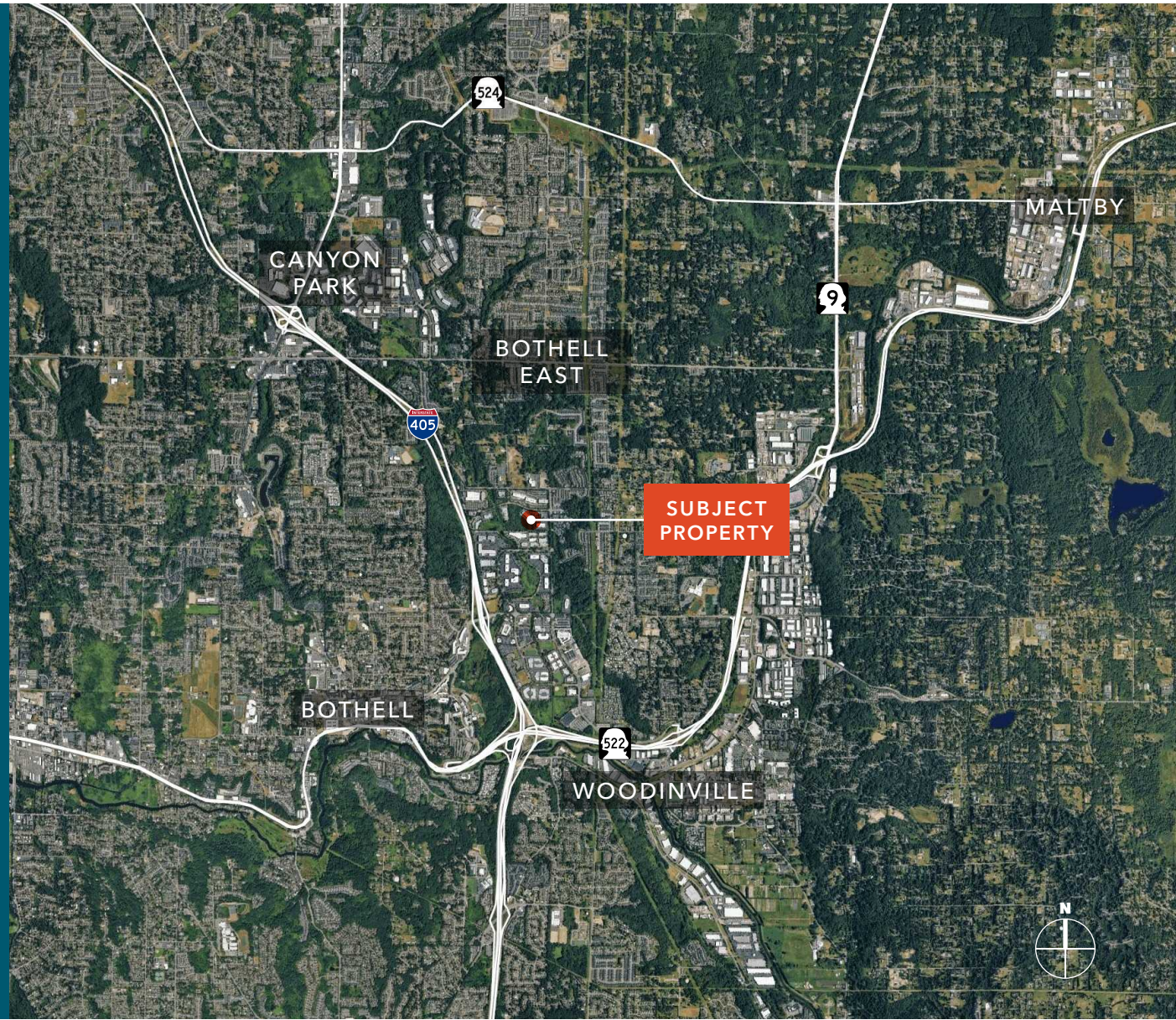
Easy for visitors to locate

Peaceful campus setting

High quality modern finishes and build-out

8 MIN
WOODINVILLE

22 MIN
BELLEVUE



CLARK BUILDING



CLARK BUILDING

Exclusively listed by

STEVE PELLUER
Senior Vice President | Shareholder
425.450.1180
steve.pelluer@kidder.com

KIDDER.COM

This information supplied herein is from sources we deem reliable. It is provided without any representation, warranty, or guarantee, expressed or implied as to its accuracy. Prospective Buyer or Tenant should conduct an independent investigation and verification of all matters deemed to be material, including, but not limited to, statements of income and expenses. Consult your attorney, accountant, or other professional advisor. All Kidder Mathews designs are the sole property of Kidder Mathews. Branded materials and layouts are not authorized for use by any other firm or person.

