

2525 TACOMA AVES

PLEASE NOTE: Tours by Appointment Only.
Do Not Disturb Current Tenant.



DOWNTOWN TACOMA RETAIL / WAREHOUSE FOR SALE

BUILDING INFORMATION

- 4,970 SF Total Building Area
- Asking Price: \$850,000
- Year Built: 1959
- Onsite and Street Parking Available
- 3-Phase Power
- Versatile WR zoning allows for a wide range of retail, warehouse, service, office, and mixed-use opportunities

FLEXIBLE MULTI-USE LAYOUT

- 2,485 SF retail/showroom space on the main level, with access from Tacoma Ave, currently configured as a barbershop. Barbershop is M2M and willing to stay or vacate.
- 2,485 SF warehouse space with dock high loading located on the lower level with access from at the rear of the building or internal stairwell.

HARRISON LAIRD
hlaird@lee-associates.com
D 253.238.0044

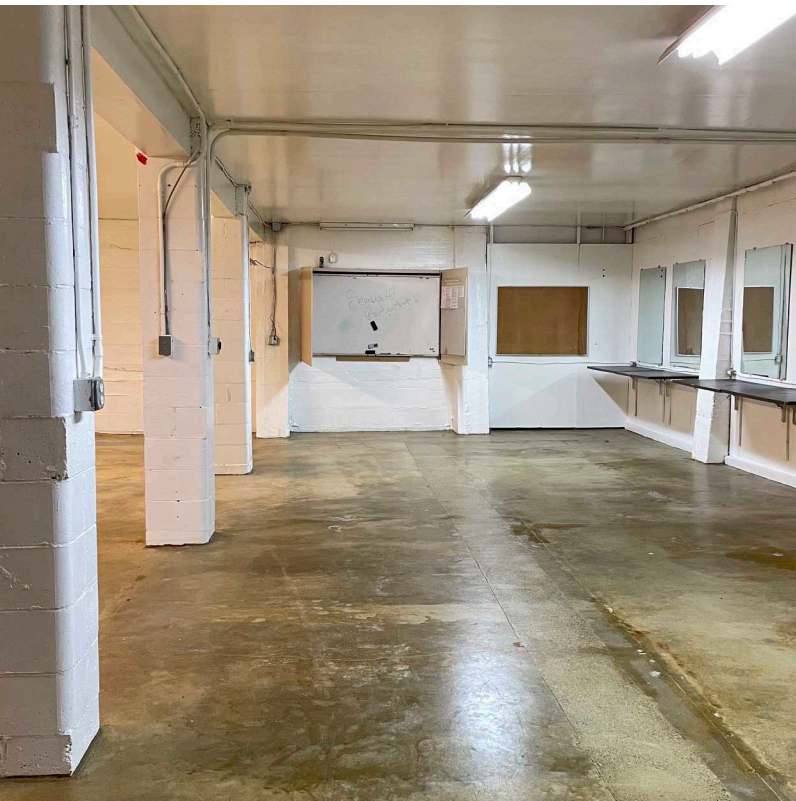
JOHN BAUDER, CCIM
jbauder@lee-associates.com
D 253.238.0043

LEE & ASSOCIATES
COMMERCIAL REAL ESTATE SERVICES

2525 TACOMA AVE S

TACOMA, WA

Property Photos

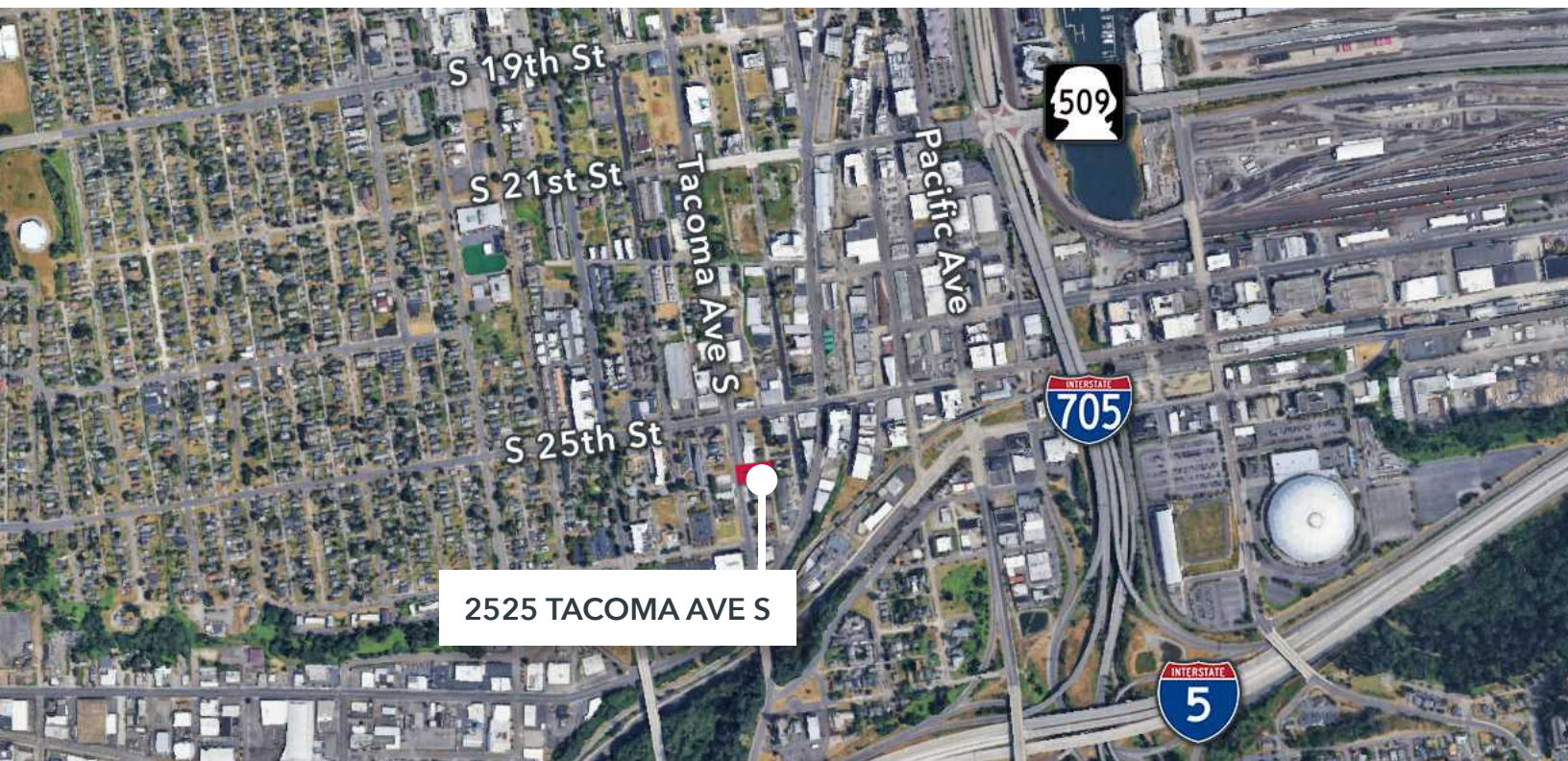


Downtown Tacoma Retail / Warehouse For Sale

2525 TACOMA AVE S

TACOMA, WA

Property Aerial



Downtown Tacoma Retail / Warehouse For Sale

2525 TACOMA AVE S

TACOMA, WA

Location

A CONNECTED DOWNTOWN

Situated in Tacoma's rapidly evolving Brewery District offering a highly visible location just minutes from downtown Tacoma with strong vehicle traffic, excellent transit access, and close proximity to the University of Washington Tacoma campus making it attractive destination for retail opportunities.

Nearby The Drop Pickleball Club, E9 Brewery, Sig Brewing Company, Berliner Beerhall, Tacoma Strength, and Jefferson Flats.



Premier Access to Downtown, Transit & I-5