



FOR SALE \$3,650,000 | Owner/User or Investment Opportunity

1922 Airport Way South

SEATTLE, WA 98134

NEWMARK

Brody O'Keefe
206-453-1463
brody.okeefe@nmrk.com

Cavan O'Keefe
206-395-2903
cavan.okeefe@nmrk.com

Evan Lugar
425-362-1403
evan.lugar@nmrk.com

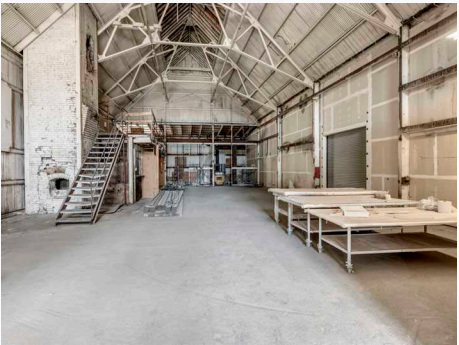


Property Details

| | |
|--------------------|--|
| Land SF | 16,085 SF |
| Zoning | MML U/85 |
| Building Total SF | 12,153 SF |
| Warehouse | 10,356 SF |
| Office | 1,797 SF |
| Mezzanine/Storage | 1,797 SF (not included in Building total SF) |
| Year Built | 1900 |
| Construction Class | Wood Frame |
| Delivery Condition | Vacant |

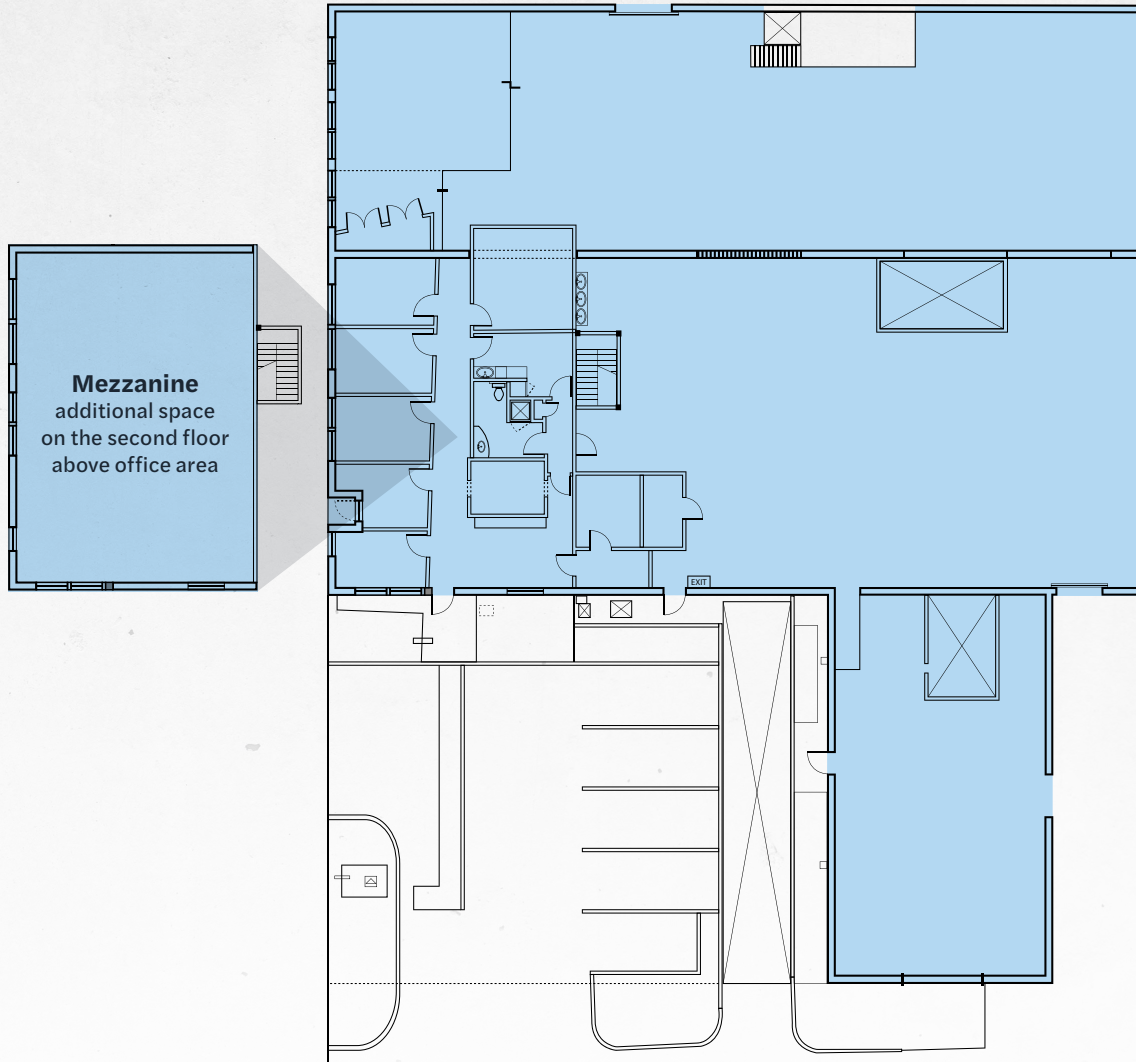
Property Highlights

- Prime location on Airport Way with high traffic visibility
- Private off street parking lot and fenced in yard behind the building
- Consists of warehouse and office space with mezzanine that can function as storage or additional work space/break area
- 3 roll up doors provide multiple access points
- Permitted paint booth and full hazardous materials storage area in place
- Central location: Less than a 10 minute drive to downtown or 3-5 minutes to I-5/I-90

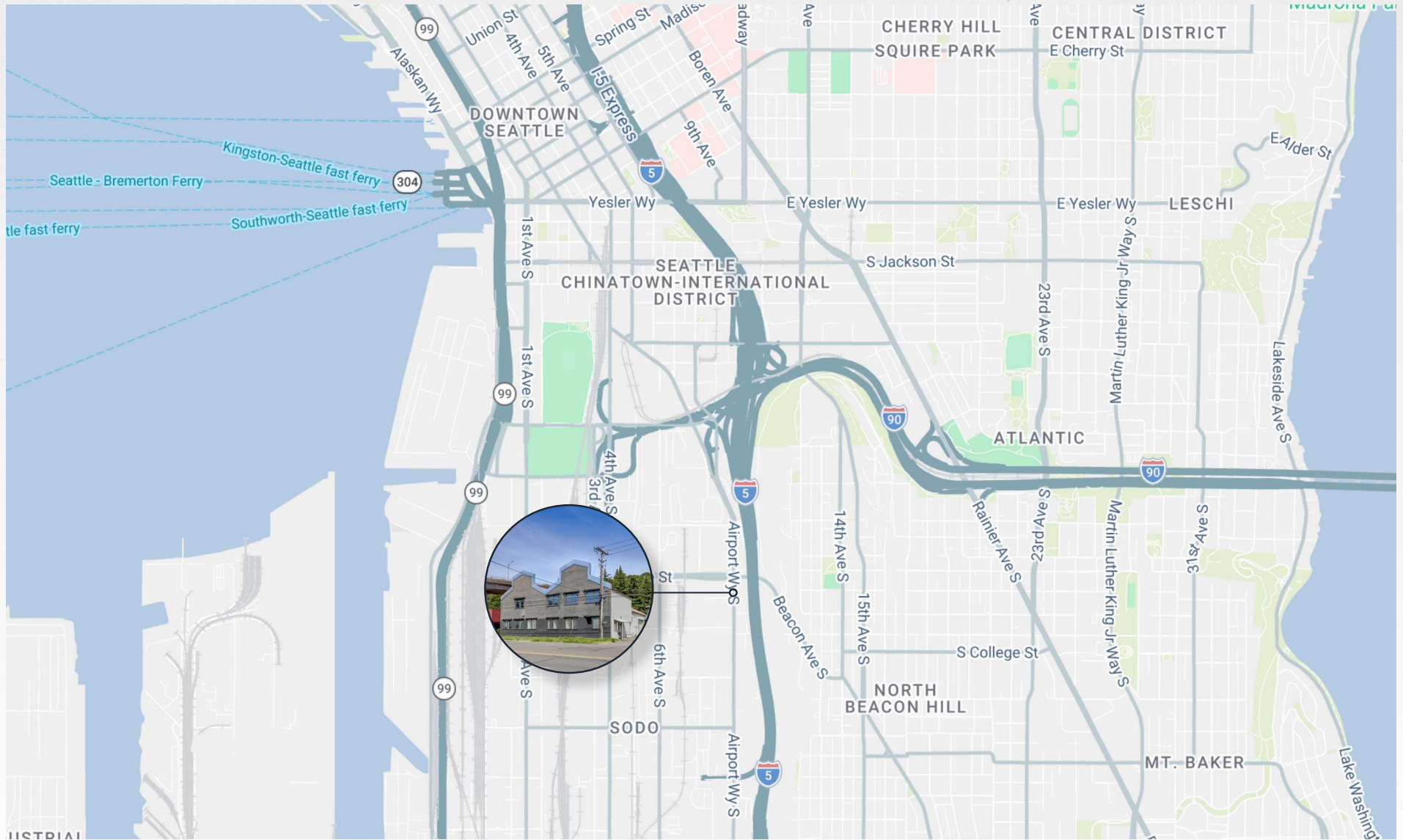


Floor Plan

12,153 SF Building Total



Location



FOR SALE \$3,650,000 | Owner/User or Investment Opportunity

1922 Airport Way South

SEATTLE, WA 98134

Brody O'Keefe
206-453-1463
brody.okeefe@nmrk.com

Cavan O'Keefe
206-395-2903
cavan.okeefe@nmrk.com

Evan Lugar
425-362-1403
evan.lugar@nmrk.com

The distributor of this communication is performing acts for which a real estate license is required. The information contained herein has been obtained from sources deemed reliable but has not been verified and no guarantee, warranty or representation, either express or implied, is made with respect to such information. Terms of sale or lease and availability are subject to change or withdrawal without notice. 11644618009 06/2026

NEWMARK