

HOTEL SEATTLE

*Iconic Downtown Seattle
78-Room Hotel
4 Blocks From Waterfront
Prepped For Revitalization*

315 SENECA ST | BUYHOTELSEATTLE.COM



Exclusively Listed by

SIMON | ANDERSON MULTIFAMILY TEAM

JERRID ANDERSON
Executive Vice President
206.499.8191
jerrid.anderson@kidder.com

MATT JOHNSTON
Vice President
425.422.7840
matt.johnston@kidder.com

BUYHOTELSEATTLE.COM

MATT LAIRD
Senior Vice President
425.736.5516
matt.laird@kidder.com

JACK SHEPHARD
Senior Associate
425.753.5047
jack.shephard@kidder.com

KIDDER.COM

The information contained in the following Marketing Brochure is proprietary and strictly confidential. It is intended to be reviewed only by the party receiving it from Kidder Mathews and should not be made available to any other person or entity without the written consent of Kidder Mathews.

This Marketing Brochure has been prepared to provide summary, unverified information to prospective purchasers, and to establish only a preliminary level of interest in the subject property. The information contained herein is not a substitute for a thorough due diligence investigation. Kidder Mathews has not made any investigation, and makes no warranty or representation, with respect to the income or expenses for the subject property, the future projected financial performance of the property, the size and square footage of the property and improvements, the presence or absence of contaminating substances, PCB's or asbestos, the compliance with State and Federal regulations, the physical condition of the improvements thereon, or the financial condition or business prospects of any tenant, or any tenant's plans or intentions to continue its occupancy of the subject property. The information contained in this Marketing Brochure has been obtained from sources we believe to be reliable; however, Kidder Mathews has not verified, and will not verify, any of the information contained herein, nor has Kidder Mathews conducted any investigation regarding these matters and makes no warranty or representation whatsoever regarding the accuracy or completeness of the information provided. All potential buyers must take appropriate measures to verify all of the information set forth herein.

This information has been secured from sources we believe to be reliable. We make no representations or warranties, expressed or implied, as to the accuracy of the information. References to square footage or age are approximate. Recipient of this report must verify the information and bears all risk for any inaccuracies.

EXECUTIVE SUMMARY

HOTEL SEATTLE

OFFERING SUMMARY

PRICE	Market
OFFERS DATE	To be Announced

PROPERTY SUMMARY

ADDRESS	315 Seneca St
NEIGHBORHOOD	Downtown
TOTAL ROOMS	78
GROSS SF	36,240 SF
STORIES	11
YEAR BUILT	1926
CONSTRUCTION TYPE	Reinforced Concrete
ZONING	DOC1 U/450/U

EXTENSIVE WORK COMPLETED

- New Roof
- Complete Elevator Modernization
- Siding Work & Prepped for Paint
- Extensive Demo and Renovation Prep
- Plumbing Repairs
- Approved Construction Plans
- Construction Permit in Hand

HOTEL SEATTLE



SEATTLE CBD

amazon

STARBUCKS

Bristol Myers Squibb

AMGEN



Redfin

Gates Foundation

Fred Hutch Cancer Center



Zillow

NORDSTROM



docusign

Seattle Cancer Care Alliance

PATH

Google

SUBJECT PROPERTY

PUBLIC MARKET CENTER

\$800M WATERFRONT REVITALIZATION

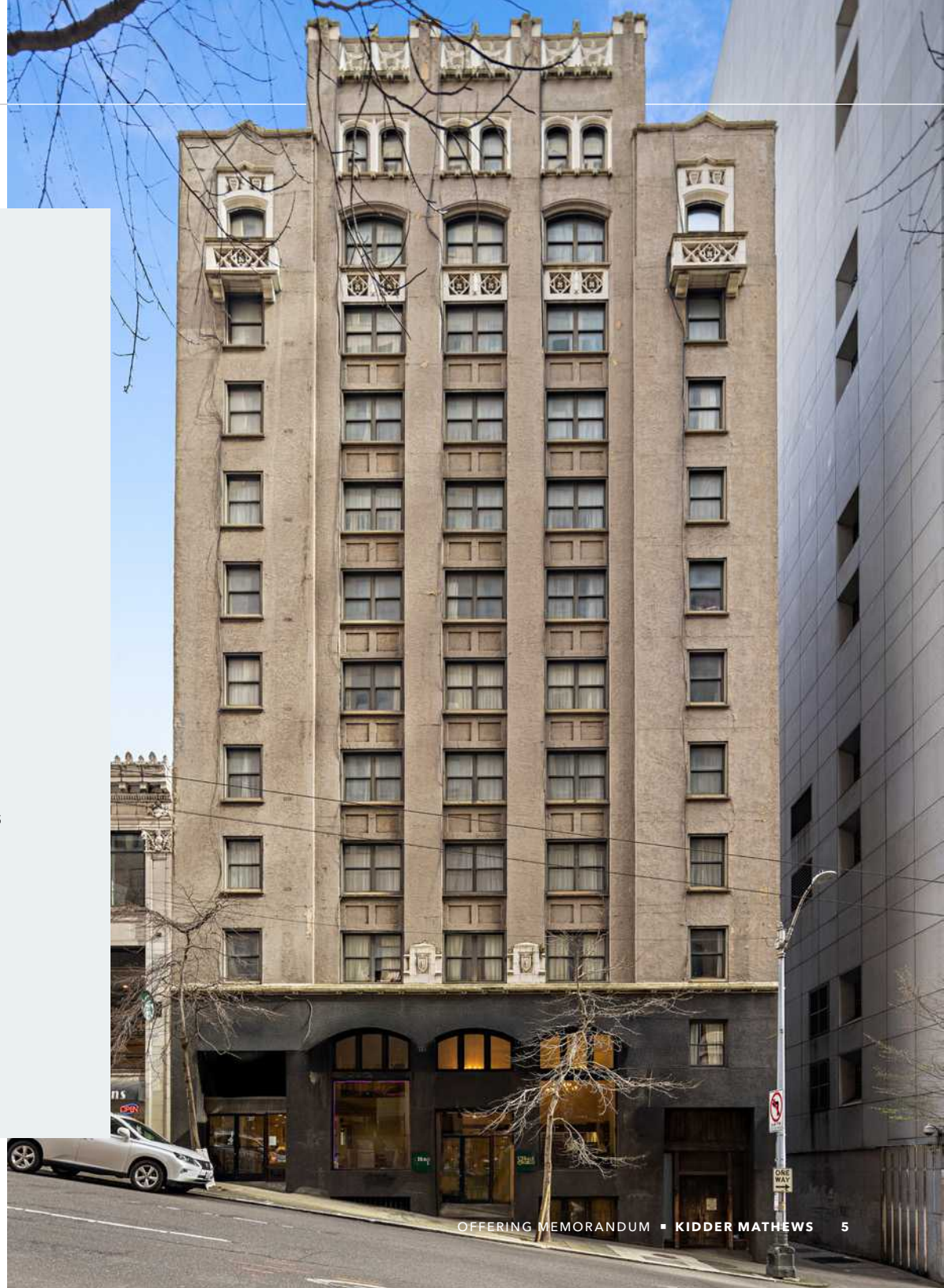


HOTEL SEATTLE

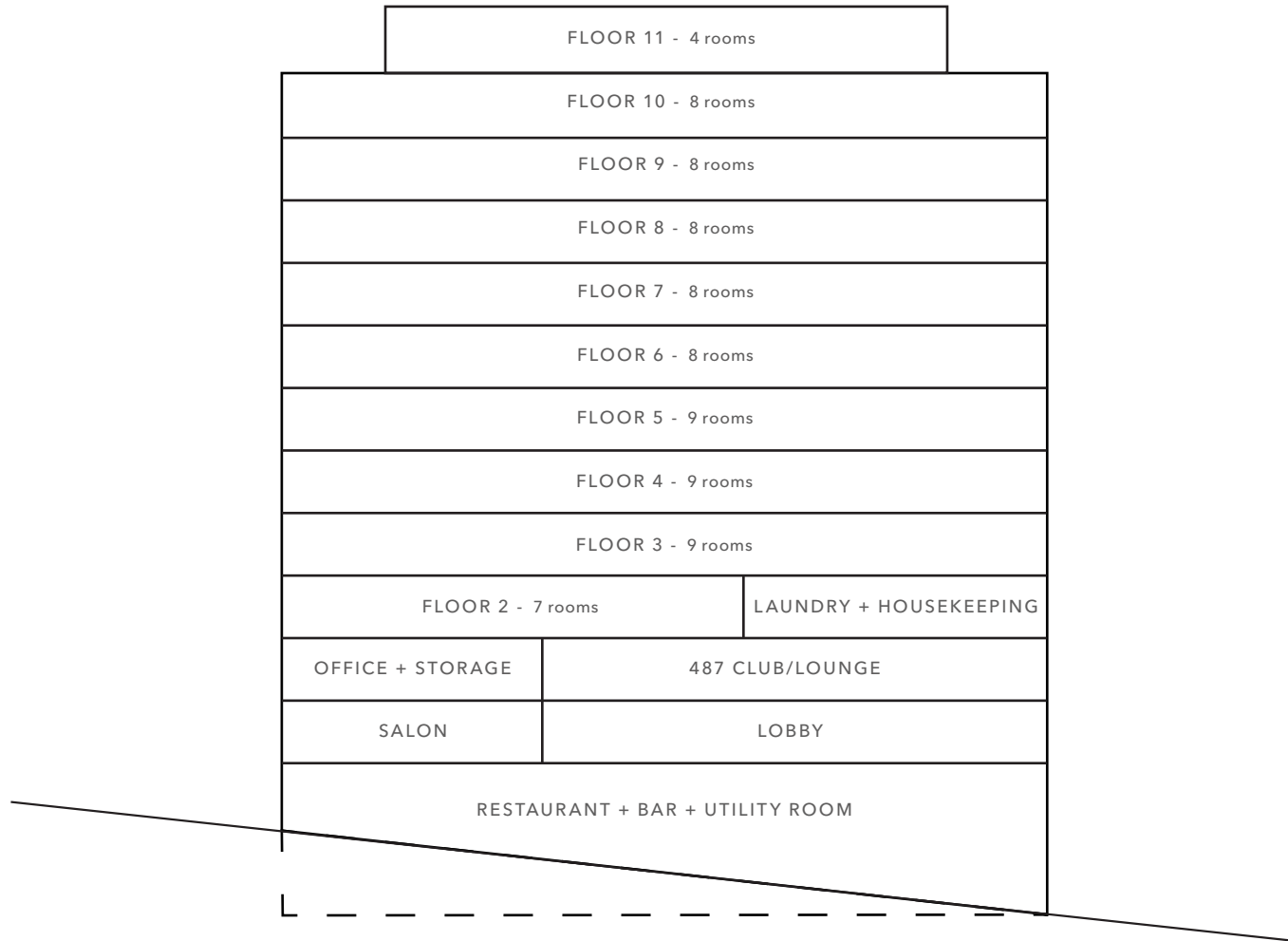
EXTENSIVE WORK COMPLETED AND READY FOR REVITALIZATION

- New Roof with 20-Year Warranty
- Complete Elevator Modernization
- Siding Work to Remove 1960's Concrete/Marble-Crete, and Prepped for Painting
- Extensive Demo to Basement, Common Areas, and Hotel Rooms
- Plumbing Repairs to Undersized Waste Lines, Drum Trap Removal, and fixture cross replacement in hotel rooms
- Preliminary Massing for Apartment Conversion
- Construction Plans Complete for Hotel Revitalization
- Construction Permit In Hand (expires June 2027)

HOTEL SEATTLE



BUILDING LAYOUT



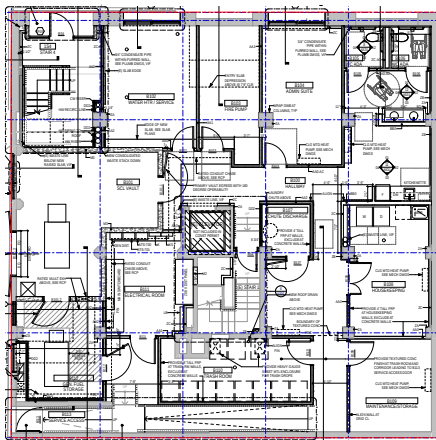
EXTERIOR PHOTOS



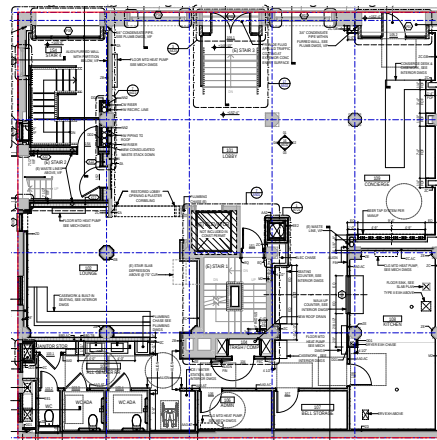
HOTEL SEATTLE



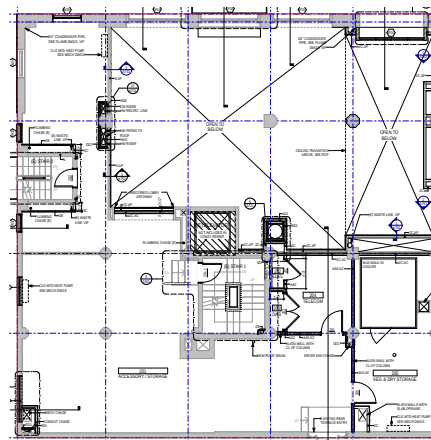
FLOOR PLAN (HOTEL)



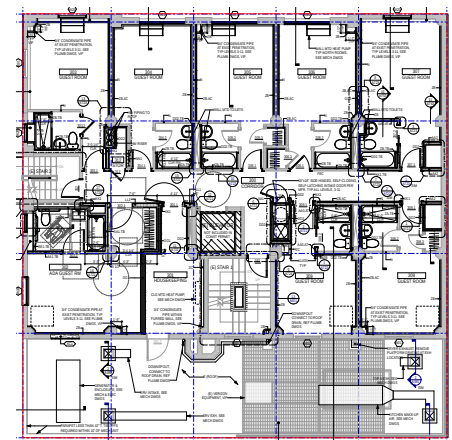
BASEMENT



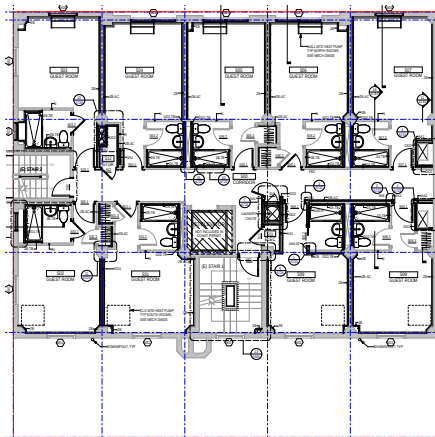
LOBBY



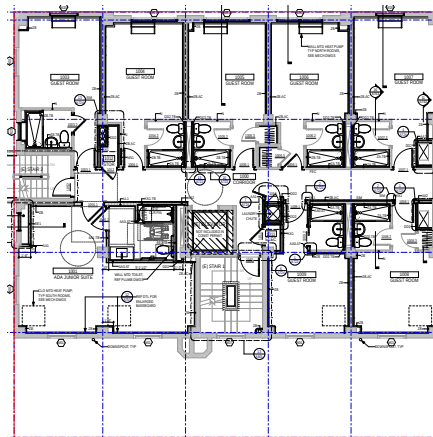
MEZZANINE



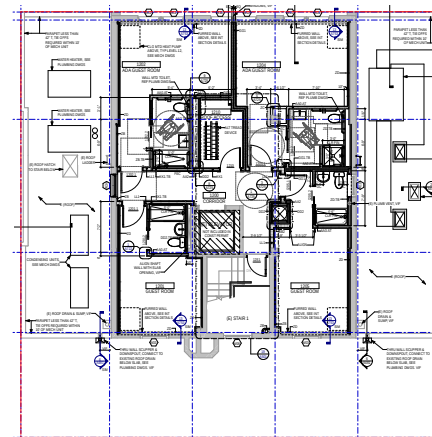
LEVEL 3



LEVELS 4-9



LEVELS 10-11



LEVEL 12

→ SEE DOCUMENT LIBRARY FOR FULL PLAN SET

APARTMENT CONVERSION FLOOR PLANS (FEASIBILITY STUDY)



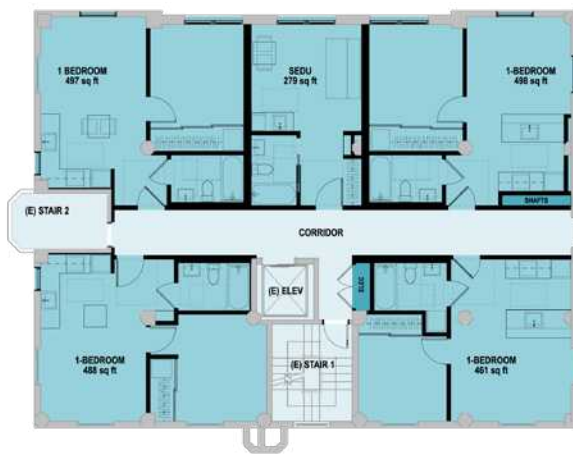
BASEMENT



LEVEL 1



LEVEL 2

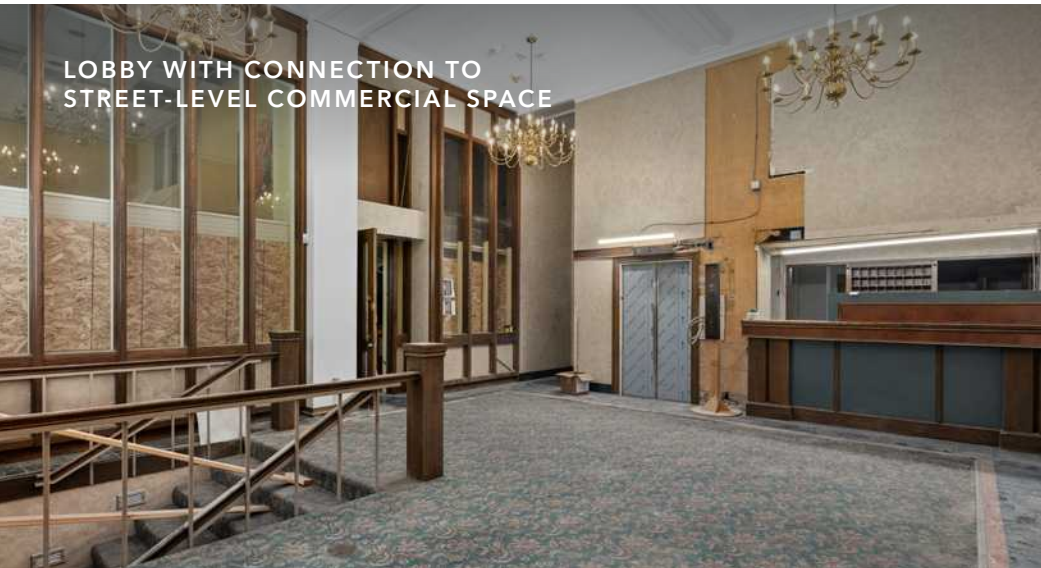


LEVELS 3-11



LEVEL 12

INTERIOR PHOTOS



LOBBY WITH CONNECTION TO STREET-LEVEL COMMERCIAL SPACE



LOBBY RENDERING



HOTEL ROOM



HOTEL ROOM RENDERING

LOCATION OVERVIEW

HOTEL SEATTLE IS *HIGHLY WALKABLE*

Hotel Seattle is at the center of Downtown, walking distance to the waterfront, Pike Place, and Westlake with a perfect transit score. The surrounding area is historically home to many hotels due to its central location and unmatched access to the city!

98
WALK
SCORE

100
TRANSIT
SCORE

200+
RESTAURANTS &
BARS WITHIN A
HALF-MILE

5
MINUTE WALK TO
LIGHT RAIL



"Pike Place Market" by michaelrighi is licensed under CC BY 2.0.

"Seattle Aquarium" by Seattle Parks & Recreation is licensed under CC BY 2.0.

Dietmar Rabich / Wikimedia Commons / "Seattle (WA, USA), Monorail station "Westlake Center" -- 2022 -- 1483" / CC BY-SA 4.0 under CC BY 2.0.

LOCATION OVERVIEW

EXCELLENT ACCESS TO THE REGION'S TOP JOB CENTERS

\$142B Light Rail Expansion by 2046

ACCESS TO SEATTLE	2-MIN WALK
Current Office Space	108.7M SF
Office Space Under Dev.	3.0M SF
<hr/>	
ACCESS TO BELLEVUE	26-MIN LIGHT RAIL
Current Office Space	30.9M SF
Office Space Under Dev.	2.8M SF
<hr/>	
ACCESS TO REDMOND	45-MIN LIGHT RAIL
Current Office Space	17.1M SF
Office Space Under Dev.	3.0M SF
<hr/>	
ACCESS TO SOUTH END	20-MIN DRIVE
Current Office Space / Industrial	16.6M SF
Industrial Space Under Dev.	674K SF

Source: CoStar, US Census Bureau



SEATTLE'S \$806M WATERFRONT TRANSFORMATION: A GAME-CHANGER FOR THE CITY

\$288M
ONGOING ANNUAL
ECONOMIC IMPACT

8M
VISITORS
ANNUALLY

2,385
PERMANENT NEW
JOBS

Seattle's \$806 million Waterfront Seattle Project has reshaped the city's connection to Elliott Bay, creating a world-class public space that links Belltown, Downtown, and the waterfront.

This revitalization includes new parks, cultural attractions, and pedestrian-friendly infrastructure, making it a major draw for residents, businesses, and tourists.

With enhanced walkability, waterfront dining, and year-round public programming, the area has become more vibrant and accessible. The removal of the Alaskan Way Viaduct has opened waterfront views, improved connectivity, and increased urban appeal.

This investment is driving higher foot traffic, tourism, and retail demand, all of which strengthen the multifamily housing market. As Seattle's urban core evolves, the Waterfront Seattle project cements the city as a top-tier destination for living, working, and investing.

SEATTLE IS A NATIONAL LEADER IN AI INNOVATION

The AI wave is real—and it's anchored in Seattle.

Seattle's AI economy is a structural tailwind for long-term multifamily value.



TIER 1 AI METRO

Seattle is 1 of 28 "Star Hubs" per Brookings, excelling in talent, innovation, and adoption.



TOP RESEARCH & TALENT

Amazon, Microsoft, UW, and Ai2 lead AI research and employment.



VENTURE-FUNDED MOMENTUM

Seattle AI startups are growing rapidly across enterprise sectors.

LOCATION OVERVIEW

Why Seattle's AI Ecosystem Matters for Multifamily Investors

TOP 5 U.S. METRO FOR AI READINESS

Seattle ranks in the top tier nationally for AI research and industry activity (Brookings, 2024).

HOME TO AI POWERHOUSES

Amazon, Microsoft, and the Allen Institute for AI anchor the region's AI economy.

UNMATCHED TALENT PIPELINE

The University of Washington and global recruiting funnel top-tier engineers into the local market.

VENTURE CAPITAL MAGNET









































Billions in AI VC funding drive job creation, new startups, and long-term population growth.

STABILITY IN A SHIFTING MARKET

As AI transforms industries, Seattle's diversified tech base offers resilient demand for housing.

HOTEL SEATTLE

SEATTLE ENTERPRISE AI MARKET

LOCATION OVERVIEW

MAJOR EMPLOYERS

Seattle

108,690,376

TOTAL OFFICE SF

511,688

TOTAL EMPLOYEES

amazon, expedia group, STARBUCKS, NORDSTROM, Expeditors, Weyerhaeuser, Bill & Melinda Gates Foundation, Fred Hutch Cancer Center, UW Medicine, Meta, ALLEN INSTITUTE for BRAIN SCIENCE, Google, Adobe, docusign, REDFIN, Remitly, Zillow, qualtrics, Snapchat, ORACLE, Deloitte, IS, Disney, Russell Investments, Apple, Bristol Myers Squibb, MOSSADAMS, Avalara, BIG FISH, VULCAN, HBO, Uber, tableau, Port of Seattle, Seattle Cancer Care Alliance, Safeco Insurance, Trident, SEATTLEU, Booking.com, Porch, FILSON, Rover, Holland America Line, BLACKROCK, Dropbox, PATH, BROOKS, nanoString, KAISER PERMANENTE, blue nile, Virginia Mason Franciscan Health, PayScale, moderna, Tommy Bahama, ISB, FORTIVE, trupanion, Furlo, PitchBook, zumiez, CZ, PEMCO Insurance, xhealth, gettyimages, Seattle Children's, A12

Eastside

77,834,835

TOTAL OFFICE SF

259,322

TOTAL EMPLOYEES

T Mobile, PACCAR, amazon, Eddie Bauer, Microsoft, CONCUR, smartsheet, BUNGIE, Roku, ebay, SAMSUNG, salesforce, Meta, VALVE, KAISER PERMANENTE, OVERLAKE MEDICAL CENTER & CLINICS, Google, tableau, GoDaddy, ASTRONICS, Nabtesco, LUXOFT, EvergreenHealth, Pfizer, AGC Biologics, PHILIPS, GENERAL DYNAMICS, DELTA, Nintendo, oculus, AT&T, SPACEX, accenture, Honeywell, KYMETA, SYMETRA, TEREX, COSTCO WHOLESALE, KREI, SANMAR, LAKESIDE INDUSTRIES, SIEMENS, SWEDISH, GE Healthcare, DARIGOLD, LAKESIDE INDUSTRIES, NAES, chewy

Kent Valley

114,094,059

TOTAL INDUSTRIAL SF

279,560

TOTAL EMPLOYEES

Alaska, BOEING, SEA, BLUE ORIGIN, amazon, HEXCEL, EXOTIC METALS FORMING, Sysco, PROVIDENCE Health & Services, World Vision

HEADQUARTERED IN THE PUGET SOUND



\$638B

2024 REVENUE

1.5M+

EMPLOYEES

87K

WA EMPLOYEES

Amazon, ranked #2 on the Fortune 500 list, has a market capitalization of \$1.61 trillion. The company has invested over \$225.6B in Washington State, contributing \$205B to the state's GDP. Amazon employs over 87,000 people directly in Washington and supports more than 487,200 indirect jobs. Its footprint in the state consists of 54 buildings with a total of 12M square feet of office space.



\$245B

2024 REVENUE

228K

EMPLOYEES

58.4K

WA EMPLOYEES

Ranked #13 on the Fortune 500, Microsoft is a global leader in technology and boasts a \$2.96 trillion market cap. Microsoft is expanding its Redmond World HQ with a multibillion-dollar project, adding 17 buildings and 6.7M SF of renovated space by 2025. Microsoft's influence in the region is highlighted by its more than 58,400 employees in Washington and its status as the 2024 World's Most Valuable Company.



\$81.4B

2024 REVENUE

70K

EMPLOYEES

7.6K

WA EMPLOYEES

T-Mobile recently completed a \$160M renovation of its Bellevue headquarters. The company employs around 7,600 people in Washington and occupies 1.5M SF of real estate in the Puget Sound region. This includes its national technology lab and Tech Experience 5G Hub, demonstrating its dedication to innovation in the telecommunications industry.



STARBUCKS

\$36.2B

2024 REVENUE

361K

EMPLOYEES

10.7K

WA EMPLOYEES

Starbucks is the leading roaster and retailer of specialty coffee worldwide, with over 38,000 stores globally. Headquartered in Seattle, it employs 10,700 people in Washington State and occupies over 1M SF of office space, driving economic growth and development in Seattle.

HEADQUARTERED IN THE PUGET SOUND

expedia group™

\$13.7B

2024 REVENUE

16.5K

EMPLOYEES

3.3K

WA EMPLOYEES

Expedia Group ranks among the world's largest online travel companies, with major consumer brands including Expedia, Hotels.com, and VRBO. In 2021, the company opened a new \$900M headquarters in Seattle's Interbay neighborhood, which spans 1.38M SF across a 40-acre campus. The facility is designed to accommodate up to 6,500 employees, underscoring Expedia's commitment to the Puget Sound region.

(Image Source: ZGF)

**COSTCO
WHOLESALE**

\$255B

2024 REVENUE

333K+

EMPLOYEES

21.5K

WA EMPLOYEES

Ranked #12 on the Fortune 500, Costco's global HQ is in Issaquah. In 2023, it opened a nine-story, 625K SF office building. With 876+ locations worldwide, serving 132M cardholders, Costco employs around 21,500 in WA. Known for community engagement, it ranks 6th among the state's top corporate philanthropists.

NORDSTROM

\$15.1B

2024 REVENUE

54K+

EMPLOYEES

6.5K

WA EMPLOYEES

Nordstrom, a luxury department store chain founded in Seattle, operates 99 stores in the U.S. and 260 Nordstrom Rack locations. In 2023, the company opened 19 new Nordstrom Rack stores and plans to continue its expansion with 22 more in 2024 and four in 2025. Nordstrom is known for its strong corporate philanthropy in the Puget Sound area, donating over \$3M to Washington State in 2022.

HOTEL SEATTLE

Alaska®

\$11.7B

2024 REVENUE

26K+

EMPLOYEES

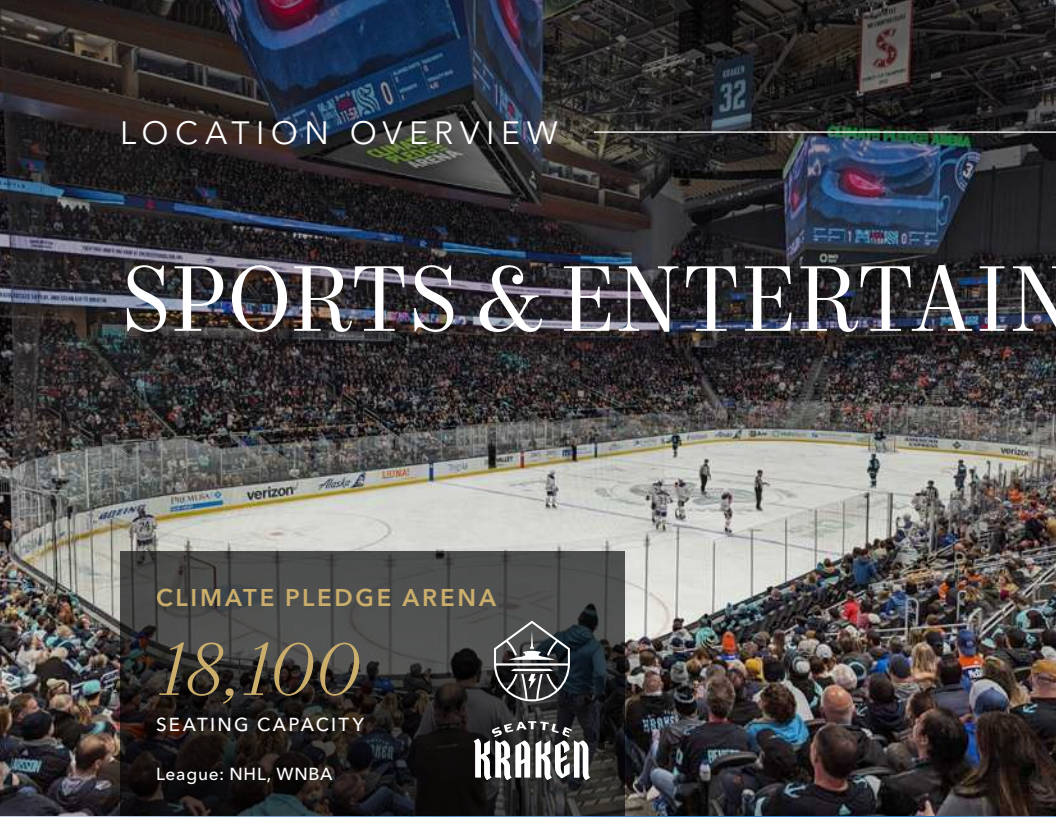
11.4K

WA EMPLOYEES

Alaska Airlines is one of the largest airline carriers in the United States, serving a broad network of destinations across North America and beyond. The recent opening of "The Hub 2020" office facility at SeaTac enhances its regional operations. Alaska Airlines announced its plan to acquire Hawaiian Airlines for \$1.9B in December 2023, aiming to integrate the airlines' operations & loyalty programs.

LOCATION OVERVIEW

SPORTS & ENTERTAINMENT



CLIMATE PLEDGE ARENA
18,100
SEATING CAPACITY
League: NHL, WNBA



LUMEN FIELD
68,740
SEATING CAPACITY
League: NFL, MLS



HUSKY STADIUM
70,138
SEATING CAPACITY
League: NCAA | Big Ten Conference



T-MOBILE PARK
47,929
SEATING CAPACITY
League: MLB



LOCATION OVERVIEW

INSTITUTIONS OF HIGHER EDUCATION

Sources: U.S. News & World Report, U.S. Census, WalletHub

#3
IN HIGHER EDUCATION RANKINGS IN U.S.

#1
MOST EDUCATED BIG CITY IN THE U.S.

#1
METRO IN THE U.S. FOR STEM PROFESSIONALS

37%
WITH A BACHELOR'S OR HIGHER IN WA

68%
OF SEATTLE RESIDENTS AGED 25+ WITH A DEGREE

#1
U.S. CITY FOR HIGHLY VALUED TECH SKILLS

W
UNIVERSITY of WASHINGTON



MOST INNOVATIVE
Among U.S. Public Universities, Reuters



FED. RESEARCH FUNDING
Among U.S. Public Universities



U.S. PUBLIC INSTITUTIONS
Times Higher Education, 2025



GLOBAL UNIVERSITY RANKING
U.S. News & World Report, 2025

60,690+ student body

Best in the nation programs, with 41 programs placed in the top 10

75% of students call Washington home after graduation, most staying in Seattle

\$1.87 billion in research awards

UW Medical Center ranked #1 hospital in WA for 12 years running

5th Largest Employer in the State, supporting 1 out of every 34 jobs in the state, with an annual economic impact of \$21 billion

GLOBAL INNOVATION EXCHANGE
UNIVERSITY of WASHINGTON



Global Innovation Exchange (GIX), located in Bellevue, is a graduate-level institute for interdisciplinary engineering, business, and design. Founded by the UW, Tsinghua University (China's leading university), and Microsoft, GIX brings together top faculty and learners worldwide to work closely with industry, non-profit, and government partners.

PUGET SOUND REGION UNIVERSITIES

SEATTLEU

7,172 Students

SEATTLE PACIFIC

2,662 Students

PIU PACIFIC LUTHERAN UNIVERSITY

2,600 Students

UNIVERSITY of PUGET SOUND

2,100 Students

B BELLEVUE COLLEGE

19,134 Students

Northwest UNIVERSITY

723 Students

DigiPen INSTITUTE OF TECHNOLOGY

1,288 Students

BASTYR UNIVERSITY

742 Students

HOTEL SEATTLE

LIFE SCIENCES & HEALTHCARE

Seattle Ranked #9 Largest Life Science Ecosystem in the U.S.

The Seattle area ranked third for life sciences employment growth, which increased 25% from 2019 to 2022. R&D employment in the region increased even more rapidly, at 39.3%.

LEADING LIFE SCIENCE COMPANIES IN SEATTLE

Biotech & Pharmaceutical



Medical Research & Innovation



Healthcare Providers



Nonprofit & Philanthropic



LIFE SCIENCES

1,100+ life science organizations

46,540+ individuals employed directly in life science jobs

112,810+ jobs supported by WA life science industry

\$39 billion total economic impact

\$22 billion added to WA's GDP

\$49 billion record high WA life science M&A activity in 2023

HEALTHCARE

1,365+ healthcare organizations

218,515+ individuals employed directly in healthcare jobs

\$46 billion total revenues

LOCATION OVERVIEW

SEA Seattle-Tacoma
International
Airport

THE NORTHWEST
SEAPORT ALLIANCE
SEATTLE + TACOMA

151K+

JOBS GENERATED

\$3.6B+

DIRECT EARNINGS

50.8M

PASSENGERS IN 2023

\$12.4B+

IN BUSINESS OUTPUT

58.4K

JOBS GENERATED

\$4B+

IN LABOR INCOME

SeaTac Airport has a 4-star skytrax airport rating and designation as the best airport in North America, connecting directly to Seattle via Light Rail in 35 minutes.

35 total airlines connecting to 93 non-stop domestic and 30 international destinations

More than 87,300 direct jobs

\$3.6B+ direct earnings

\$442M+ state/local taxes

50.8 MM passengers in 2023, 10% up from 2022

2024 cargo on track for four-year high (up 6.5% YTD)

The Northwest Seaport Alliance is a marine cargo operating partnership of the Ports of Seattle and Tacoma in the Puget Sound. It is the third largest cargo port in the United States.

20,100 of direct jobs

Over \$70 BB of waterborne trade

\$4B+ labor income

\$136M+ state and local taxes

180 global trading partners (2022)

1.9x job multiplier

Full international exports up 4.9% for 2023

Exclusively Listed by

SIMON | ANDERSON MULTIFAMILY TEAM

JERRID ANDERSON
Executive Vice President
206.499.8191
jerrid.anderson@kidder.com

MATT LAIRD
Senior Vice President
425.736.5516
matt.laird@kidder.com

MATT JOHNSTON
Vice President
425.422.7840
matt.johnston@kidder.com

JACK SHEPHARD
Senior Associate
425.753.5047
jack.shephard@kidder.com

BUYHOTELSEATTLE.COM

KIDDER.COM

HOTEL SEATTLE



**Kidder
Mathews**