

OFFERING MEMORANDUM



# *TURNKEY* DOG KENNEL OWNER/USER OPPORTUNITY

19816 BOTHELL EVERETT HWY, BOTHELL, WA

**km** Kidder  
Mathews

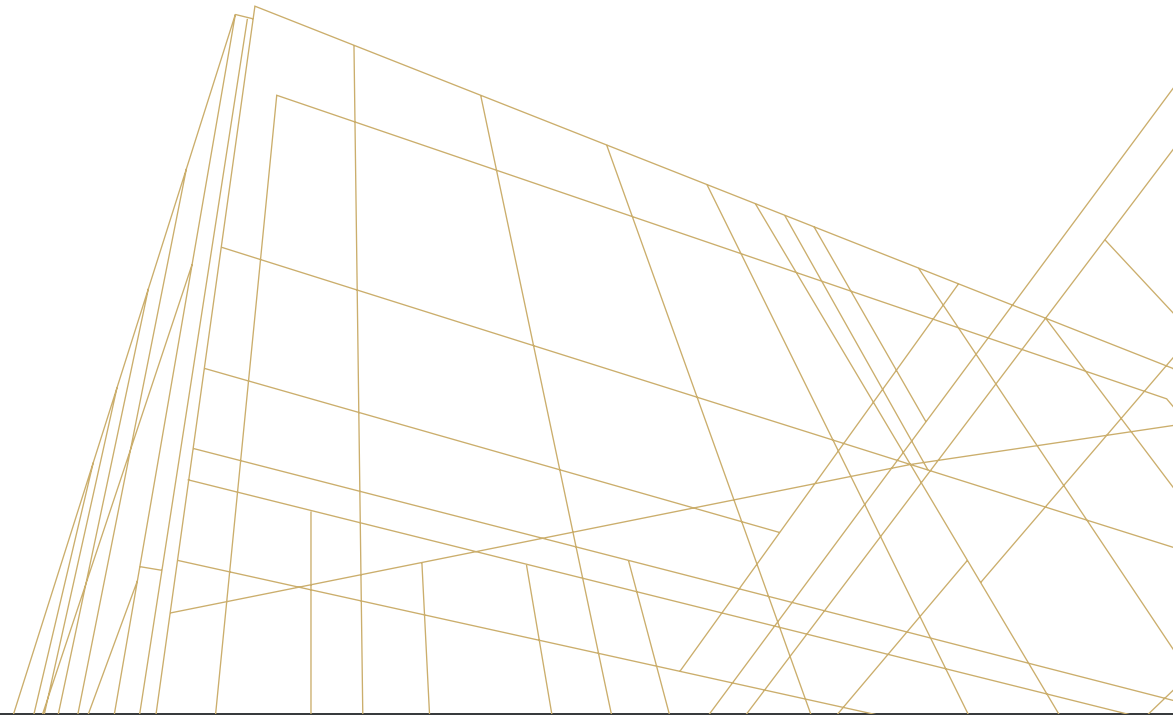
# TABLE OF CONTENTS

01

EXECUTIVE  
SUMMARY

02

LOCATION  
OVERVIEW



*Exclusively  
listed by*

**ROSS KLINGER**

Executive Vice President  
206.372.8433  
ross.klinger@kidder.com

**CHARLES CAPLICE**

Senior Associate  
425.450.1160  
charles.caplice@kidder.com

**GARY GUENTHER**

Executive Vice President  
425.450.1154  
gary.guenther@kidder.com

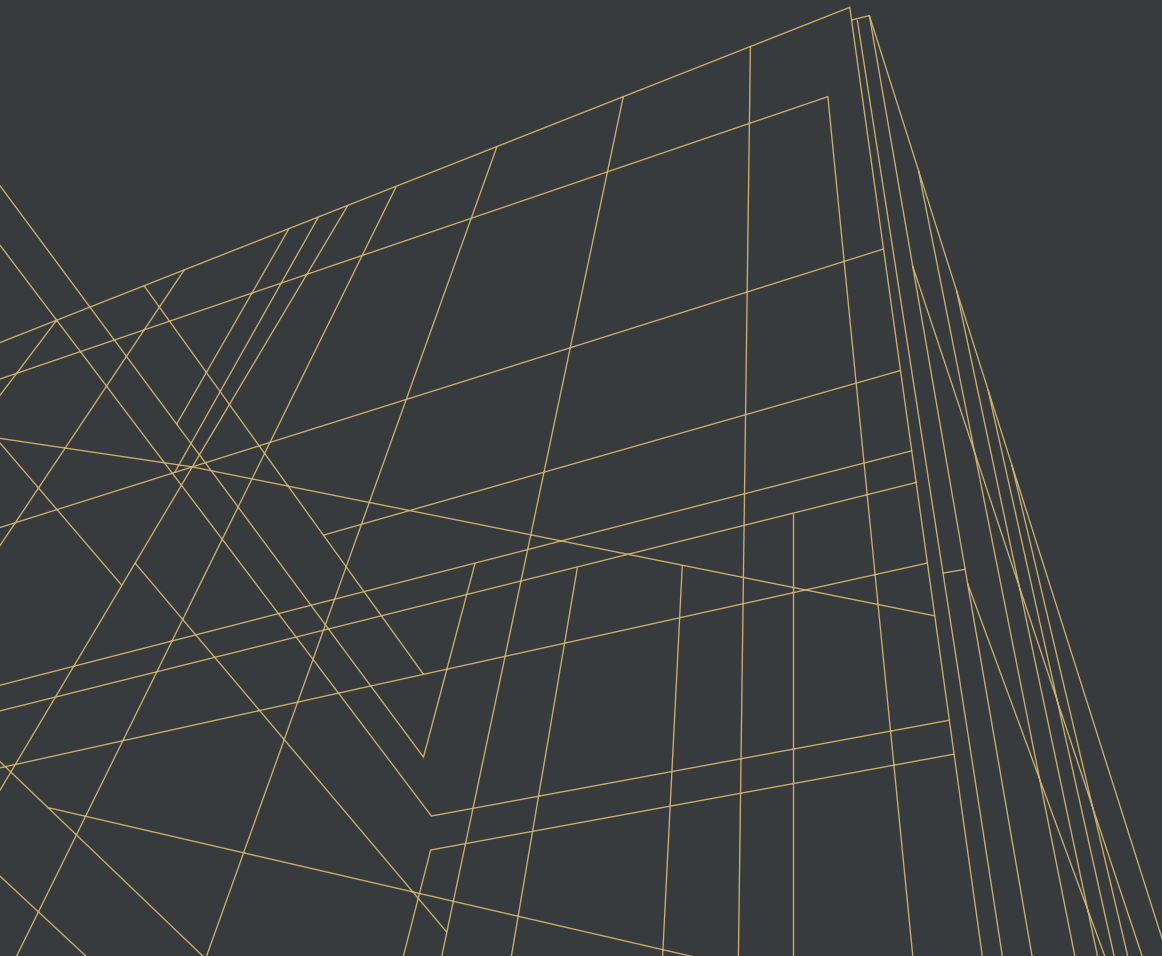
**KIDDER.COM**



The information contained in the following Marketing Brochure is proprietary and strictly confidential. It is intended to be reviewed only by the party receiving it from Kidder Mathews and should not be made available to any other person or entity without the written consent of Kidder Mathews.

This Marketing Brochure has been prepared to provide summary, unverified information to prospective purchasers, and to establish only a preliminary level of interest in the subject property. The information contained herein is not a substitute for a thorough due diligence investigation. Kidder Mathews has not made any investigation, and makes no warranty or representation, with respect to the income or expenses for the subject property, the future projected financial performance of the property, the size and square footage of the property and improvements, the presence or absence of contaminating substances, PCB's or asbestos, the compliance with State and Federal regulations, the physical condition of the improvements thereon, or the financial condition or business prospects of any tenant, or any tenant's plans or intentions to continue its occupancy of the subject property. The information contained in this Marketing Brochure has been obtained from sources we believe to be reliable; however, Kidder Mathews has not verified, and will not verify, any of the information contained herein, nor has Kidder Mathews conducted any investigation regarding these matters and makes no warranty or representation whatsoever regarding the accuracy or completeness of the information provided. All potential buyers must take appropriate measures to verify all of the information set forth herein.

This information has been secured from sources we believe to be reliable. We make no representations or warranties, expressed or implied, as to the accuracy of the information. References to square footage or age are approximate. Recipient of this report must verify the information and bears all risk for any inaccuracies.



# EXECUTIVE SUMMARY

# EXISTING *ANIMAL KENNEL* USE IN THE HEART OF BOTHELL

ADDRESS	19816 Bothell Everett Hwy, Bothell, WA
LOT SIZE	3.82 AC with a creek on the back portion of the property
BUILDING SIZE	±20,600 SF
ZONING	Urban Center (UC)
CURRENT USE	Animal Kennel (250 Dog Kennels and 48 Kitty Condos)
YARD	32 20'x30' astroturf play yards
AMENITIES	Grooming room with 3 large stainless tubs, 2 power grooming tables, 20 + drying cages
EXITING REVENUE	Opportunity to assume a long-standing book of business with historical revenue between \$600K-\$800K per year
FUTURE DEVELOPMENT	Potential of ±100 units on a 3-story garden-style development
SELLER FINANCING	Flexible seller financing available
PRICE	\$3,800,000

*3.82 AC*

LOT SIZE

*±20,600 SF*

BUILDING SIZE

*\$3.8 M*

SALE PRICE



## INVESTMENT HIGHLIGHTS

### *Owner/User Opportunity*

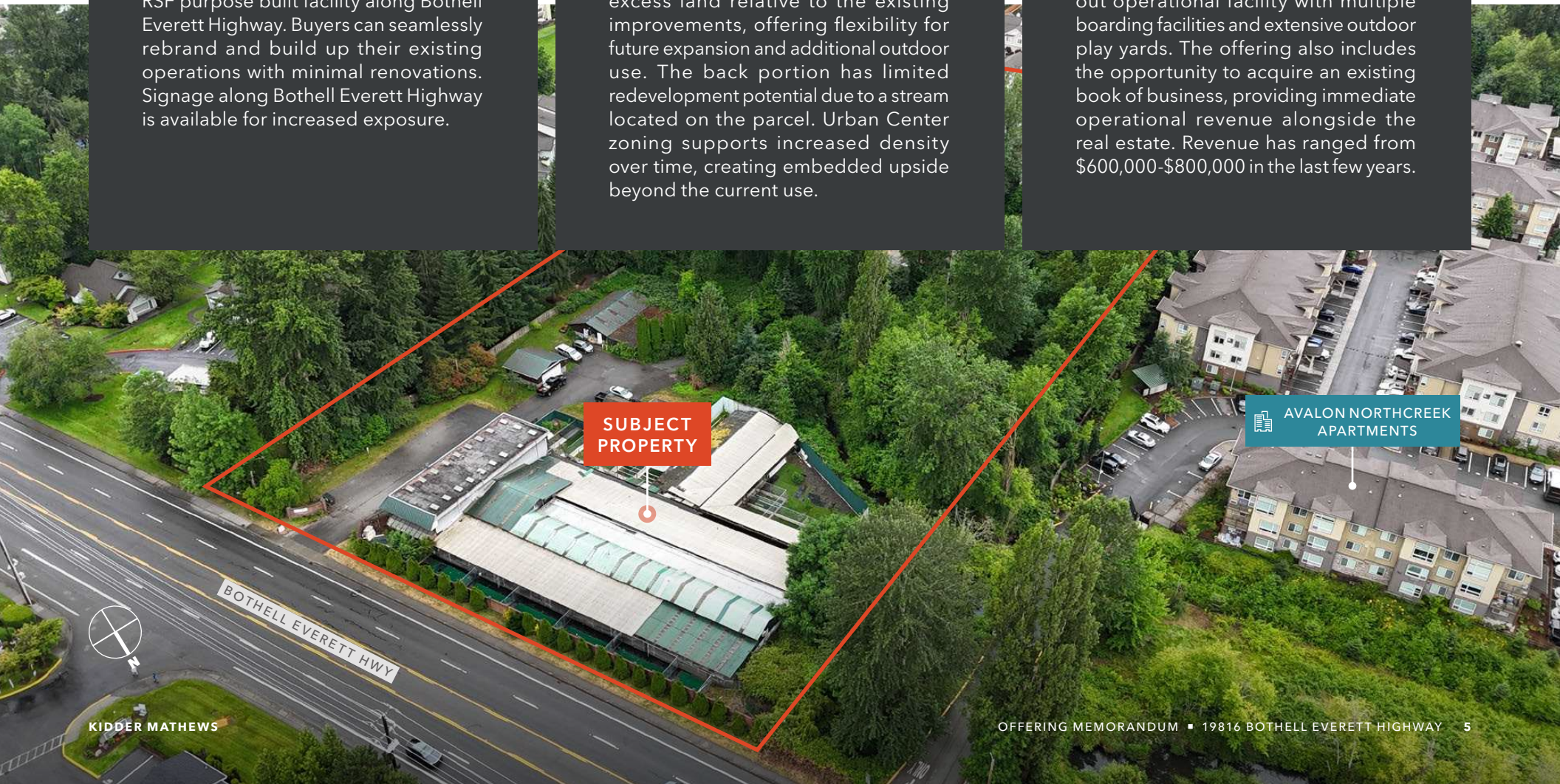
Opportunity to acquire a vacant 20,600 RSF purpose built facility along Bothell Everett Highway. Buyers can seamlessly rebrand and build up their existing operations with minimal renovations. Signage along Bothell Everett Highway is available for increased exposure.

### *Excess Land*

The 3.82-acre site provides meaningful excess land relative to the existing improvements, offering flexibility for future expansion and additional outdoor use. The back portion has limited redevelopment potential due to a stream located on the parcel. Urban Center zoning supports increased density over time, creating embedded upside beyond the current use.

### *Existing Infrastructure*

The property includes a fully built-out operational facility with multiple boarding facilities and extensive outdoor play yards. The offering also includes the opportunity to acquire an existing book of business, providing immediate operational revenue alongside the real estate. Revenue has ranged from \$600,000-\$800,000 in the last few years.

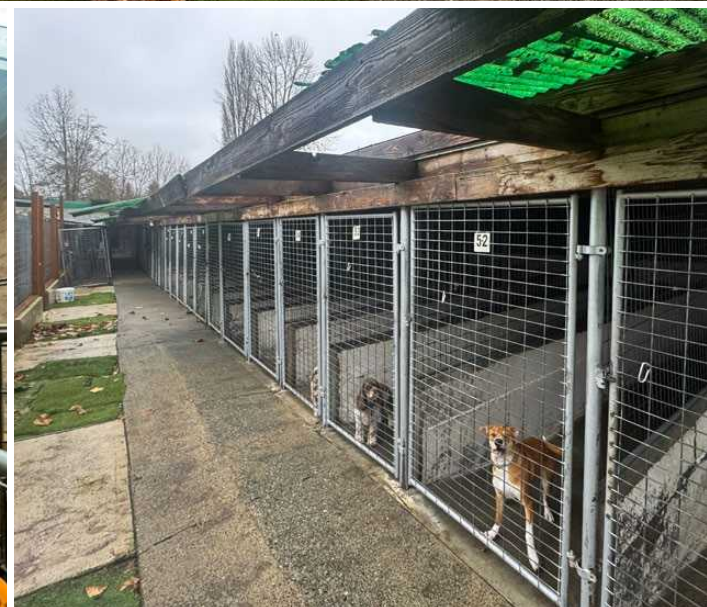


# EXECUTIVE SUMMARY

---

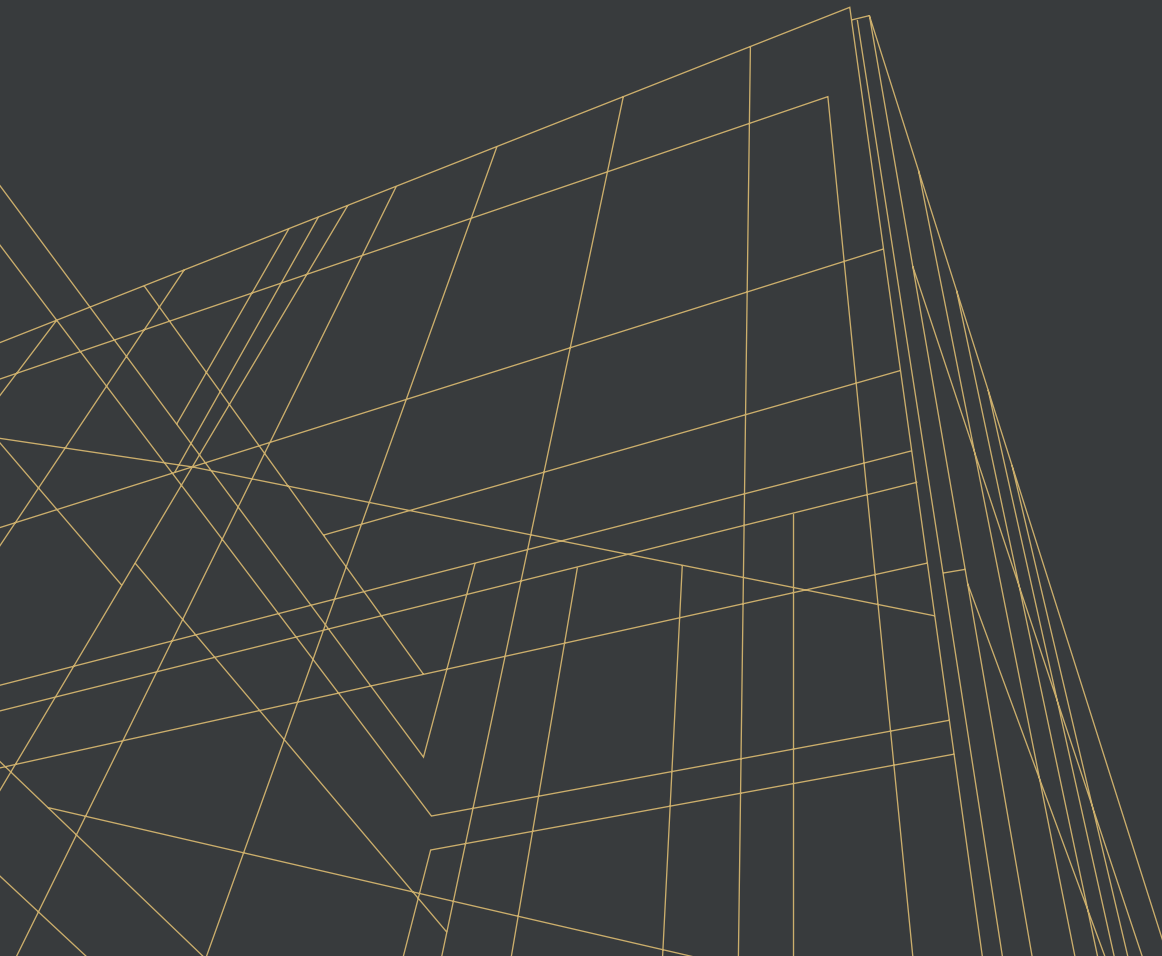


# EXECUTIVE SUMMARY



# EXECUTIVE SUMMARY





# LOCATION OVERVIEW

# LOCATION OVERVIEW



# DEMOGRAPHICS

## POPULATION

	1 Mile	3 Miles	5 Miles
2025 TOTAL	19,142	116,038	321,337
2030 PROJECTION	19,104	116,719	327,363
2020 CENSUS	18,284	113,272	309,707
PROJECTED GROWTH 2025 - 2030	-38	681	6,025
MEDIAN AGE	34.5	36.1	37.0

## HOUSEHOLDS

	1 Mile	3 Miles	5 Miles
2025 TOTAL	7,184	41,776	123,904
2020 CENSUS	7,138	41,330	120,720
GROWTH 2022 - 2025	334	2,151	120,720
OWNER-OCCUPIED	55.6%	71.1%	62.4%
RENTER-OCCUPIED	44.4%	28.9%	37.6%

## INCOME

	1 Mile	3 Miles	5 Miles
2025 AVERAGE HH INCOME	\$165,892	\$196,967	\$169,892
\$137,802	\$137,802	\$162,962	\$136,189
2025 EST. PER CAPITA INCOME	\$62,410	\$70,996	\$65,603

## BUSINESS

	1 Mile	3 Miles	5 Miles
TOTAL BUSINESSES	602	3,728	12,345
TOTAL EMPLOYEES	4,227	26,731	95,375

## RACE/ETHNICITY

	1 Mile	3 Miles	5 Miles
WHITE	53.4%	53.0%	55.6%
BLACK OR AFRICAN AMERICAN	4.5%	4.0%	5.4%
AMERICAN INDIAN OR ALASKA NATIVE	0.4%	0.4%	0.5%
ASIAN	27.1%	30.6%	24.9%
HAWAIIAN OR PACIFIC ISLANDER	0.3%	0.3%	0.4%
OTHER RACE	8.8%	8.8%	9.9%

## EDUCATION

	1 Mile	3 Miles	5 Miles
SOME HIGH SCHOOL	238	2,060	7,445
HIGH SCHOOL DIPLOMA	2,145	11,289	36,869
SOME COLLEGE	2,279	13,354	41,614
ASSOCIATE	1,164	6,800	21,406
BACHELOR'S	4,037	26,255	70,050
GRADUATE	2,991	19,002	43,951

Data Source: ©2026, Sites USA

*Exclusively listed by*

**ROSS KLINGER**

Executive Vice President  
206.372.8433  
ross.klinger@kidder.com

**CHARLES CAPLICE**

Senior Associate  
425.450.1160  
charles.caplice@kidder.com

**GARY GUENTHER**

Executive Vice President  
425.450.1154  
gary.guenther@kidder.com

[KIDDER.COM](http://KIDDER.COM)

