



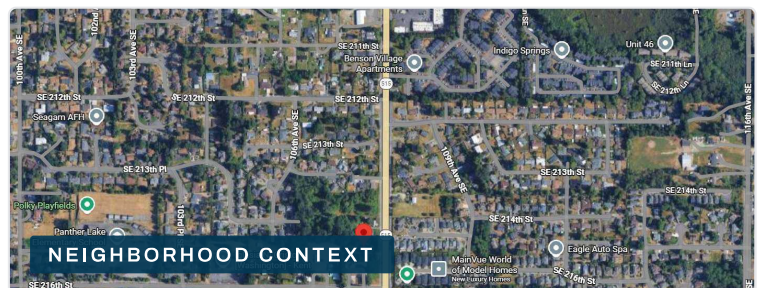
LISTING INFORMATION

ADDRESS	21507 108th Ave SE Kent, WA 98031
PARCEL #s	082205-9042 082205-9078
LOT SIZE	12,659 SF + 35,000 SF 47,659 SF • 1.094 Acres
ZONING	Neighborhood Residential 3 (NR-3)
COUNTY	King County

OFFERING
PRICE**\$520,000**

PROPERTY HIGHLIGHTS

- ◆ Prominent hard-corner location at **108th Ave SE & SE 216th St** with strong frontage and visibility.
- ◆ Immediate access to **SR 515** and close adjacency to major arterials including SE 208th St and SE 240th St.
- ◆ Two combined parcels totaling **1.094 acres** — an NR-3 residential land site.
- ◆ Established East Hill neighborhood near Safeway, retail, schools and parks.



NEIGHBORHOOD CONTEXT

FOR MORE INFORMATION, CONTACT

Matt Brennan

matt@mwaseattle.com

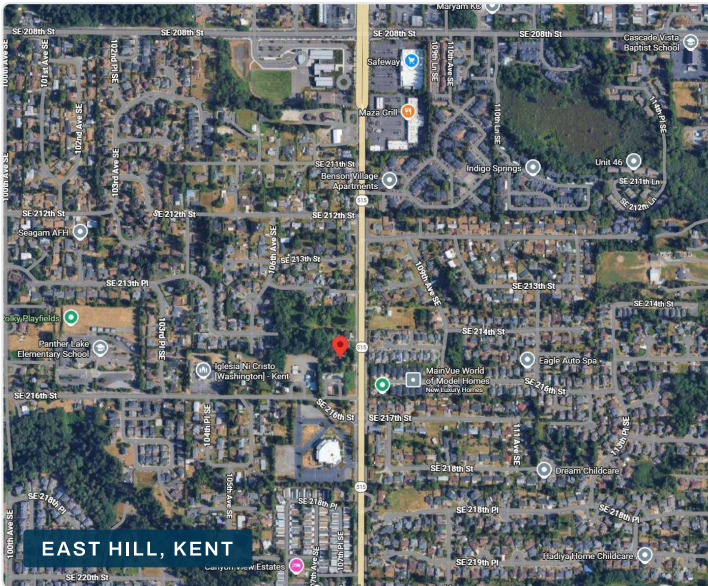
206-459-0782

SITE PLAN

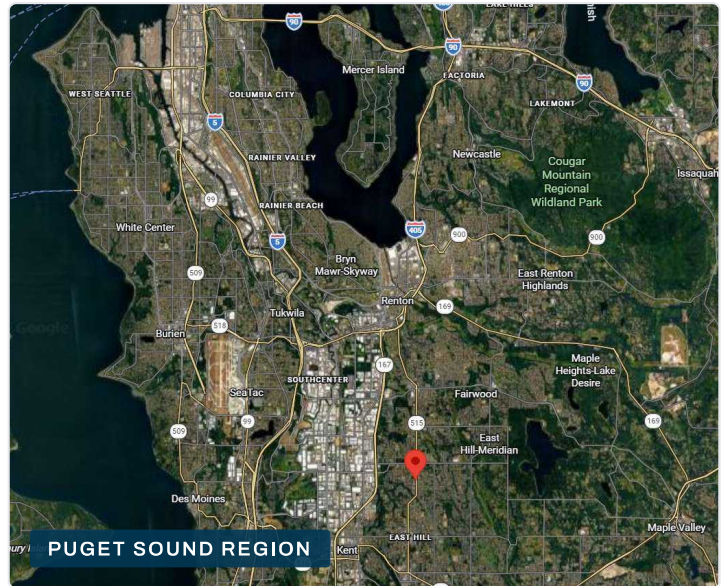
47,659 SF total



NEIGHBORHOOD



REGIONAL



CONTACT
Matt Brennan
 matt@mwaseattle.com
 206-459-0782